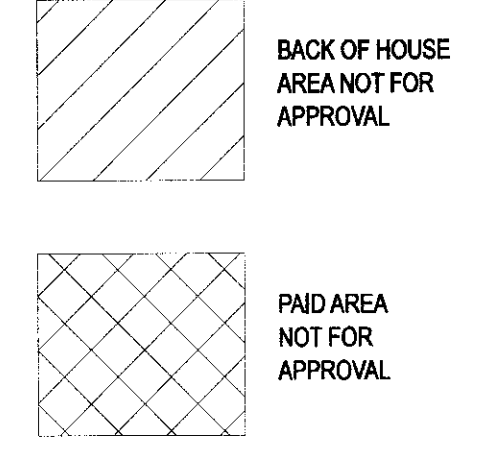


FOR CONTINUATION OF DRAWING SEE  
HAG-N105-8742-ARC-D-PLN-2-08009

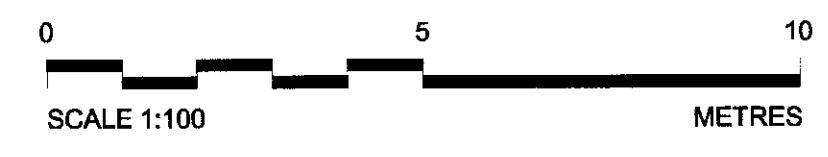
REFER TO DWG  
HAG-N105-8742-ARC-D-PLN-2-01225



**ROOM SCHEDULE**

TICKET HALL CONCOURSE	1-2001	1335m <sup>2</sup>
LIFT NO.4 LOBBY	1-2028	7.4m <sup>2</sup>
POMS	1-2029	20.4m <sup>2</sup>
LOBBY	1-2030	3.5m <sup>2</sup>
STAIR NO. 17	1-2031	
TICKET OFFICE	1-2032	20m <sup>2</sup>
LOBBY	1-2033	1.8m <sup>2</sup>
TEA POINT	1-2034	3.7m <sup>2</sup>
WC	1-2035	2.7m <sup>2</sup>
RISER 03	1-2036	7m <sup>2</sup>
STAIR NO. 16	1-2038	
GLAP 2	1-2040	2.7m <sup>2</sup>
LV SWITCH ROOM 2	1-3003	38.2m <sup>2</sup>
OLBI EMERGENCY SWITCH ROOM	1-3002	61.8m <sup>2</sup>
R.08 SERVICE ALLOCATION	1-3065	

01	ISSUED FOR PLANNING APPROVAL AMENDED DRAWING	21/04/09
00	ISSUED FOR PLANNING APPROVAL	09/04/09
Rev.	Description	Date



**London Underground Limited.**

**TOTTENHAM COURT ROAD STATION UPGRADE WORKS**  
LONDON BOROUGH OF CAMDEN AND WESTMINSTER CITY COUNCIL

**SCHEDULE 7**  
PLANS & SPECIFICATIONS  
FOR APPROVAL

Title:  
**TICKET HALL  
PLAN 2 OF 2  
LEVEL + 119.34**

Scale: 1:100 Date: 09/04/09

Ref. No.: HAG-N105-8742-ARC-D-PLN-2-08010-01

This plan is based upon the Ordnance Survey map with the permission of Ordnance Survey on behalf of the Controller of Her Majesty's Stationery Office. © Crown copyright. All rights reserved. Licence number LA10003750/0000.