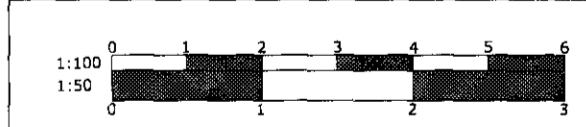
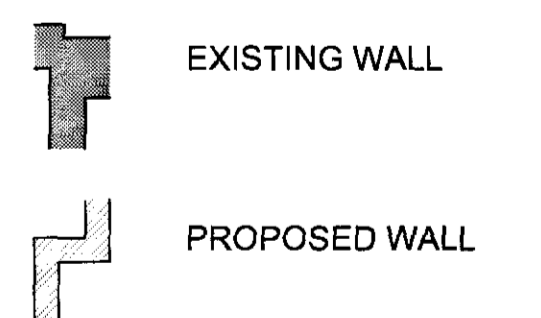
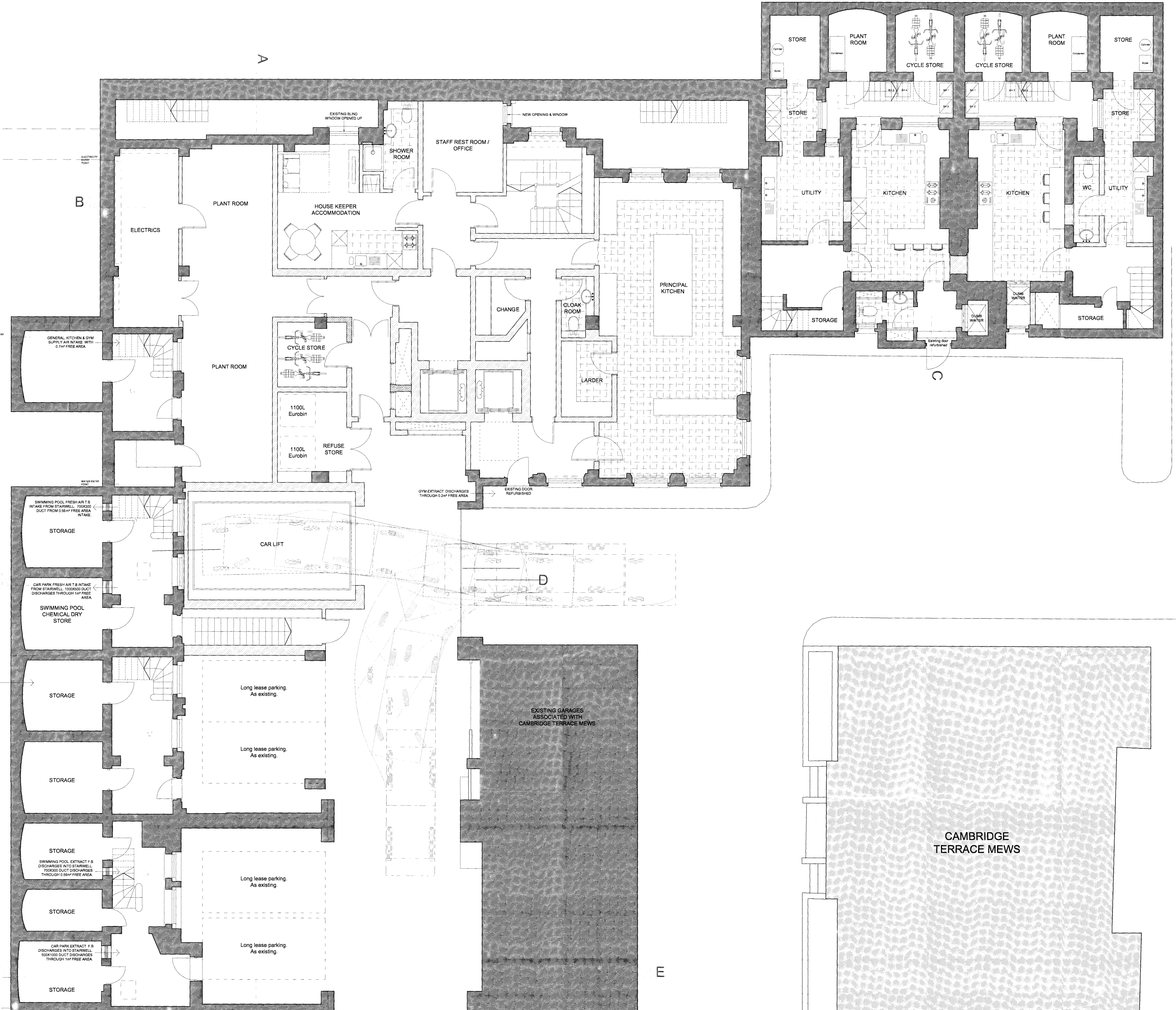


HOUSE 1

HOUSE 2

REPORT ALL ERRORS AND DISCREPANCIES TO THE ARCHITECT PROMPTLY.



NO	DATE	BY	COMMENTS

A | 17.09.08 | DF WALL BY STAIR FROM BASEMENT MOVED

REVISION NOTES

**PLANNING**

CLIENT: Cambridge Terrace Developments Ltd.  
JOB: 6-10 Cambridge Terrace & 1-2 Chester Gate, Regent's Park London, NW1

DRAWING TITLE: PROPOSED PLANS: LOWER GROUND

SCALE: 1:50 @ A0 DATE: Nov. 2008 DRAWN BY:

**MOXLEY ARCHITECTS LTD.**  
47 Clapham High Street, London SW4 7TL  
Tel: 020 7720 8958  
Fax: 020 7627 2533  
info@moxley.co.uk

DRAWING NO: **639 -2.002 A**  
FILE: T:\639 Cambridge Terrace\AutoCAD\Plans