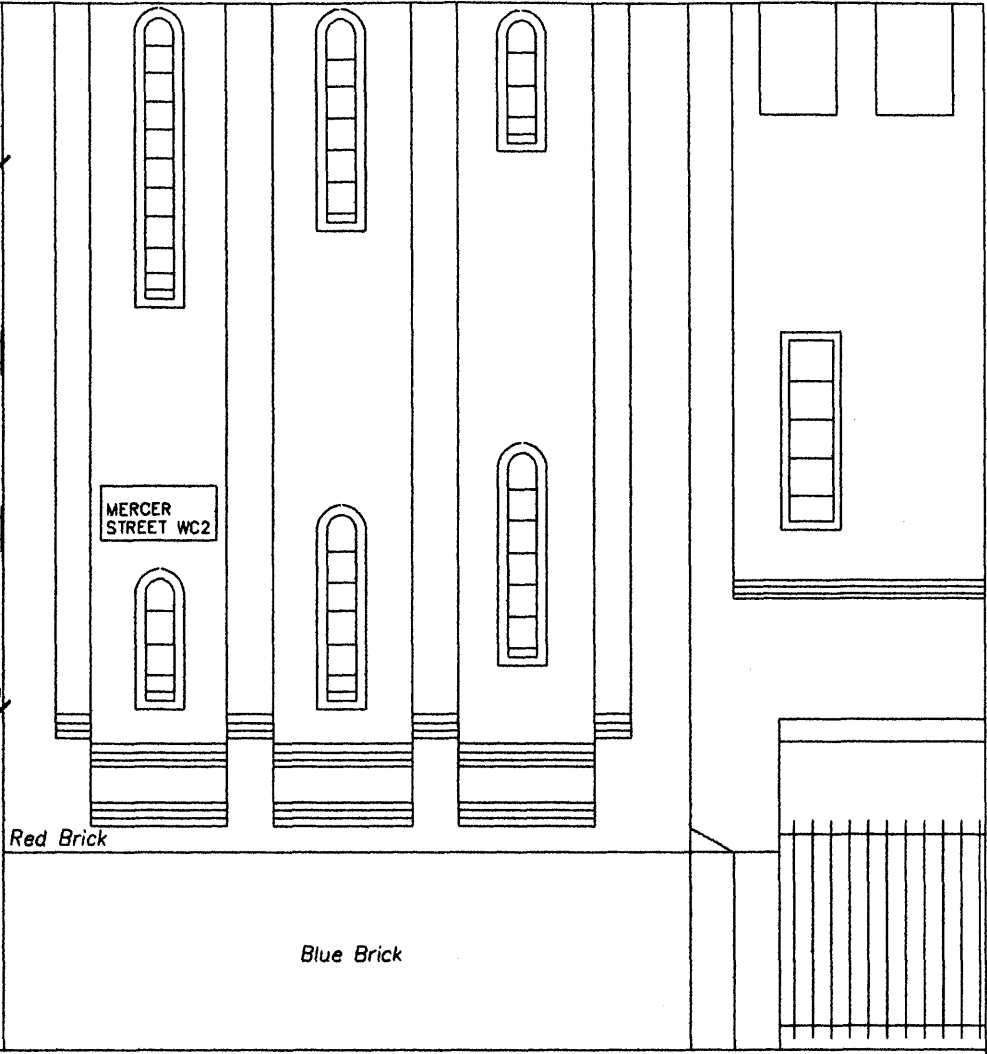
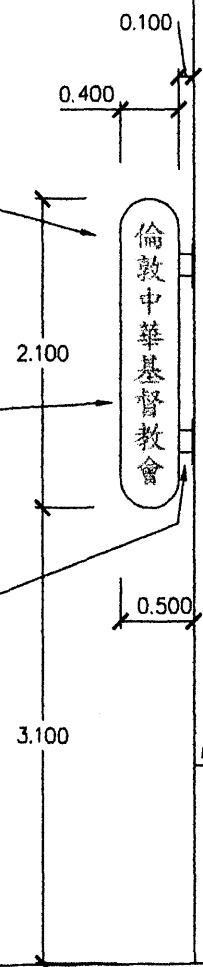


Sign 2: New projecting sign in Chinese
 2100x400x120mm projecting 500mm
 from face of building
 Internally illuminated lettering
 on opaque burgundy RAL3004 background
 Eight Chinese characters translate to
 "Chinese Church in London"
 Maximum letter height and width 200mm

Projecting sign to be made from aluminium
 powdercoated burgundy with lettering cut out
 Lettering to be opal white acrylic
 illuminated from behind with concealed
 fluorescent lighting inside sign

Projecting sign supported on two brackets
 made from rectangular hollow section steel
 150x50 welded to steel support plates 300x120
 fixed to brickwork pier
 Brackets painted to match burgundy sign



DO NOT SCALE FROM THIS DRAWING.
 CHECK ALL DIMENSIONS ON SITE BEFORE ORDERING.

Job No. Job CHINESE CHURCH IN LONDON - SOHO OUTREACH CENTRE
 Dwg. No. 3 Dwg. Proposed internally illuminated projecting Sign 2 - Mercer Street elevation
 By: pw Ckd: Scale(s) 1:50@A4 Date: 29.09.09 Rev. Notes:

WANG BROTHERS
 31 Hollowell Road, Northwood, Middx HA6 1DT
 01923 822 802