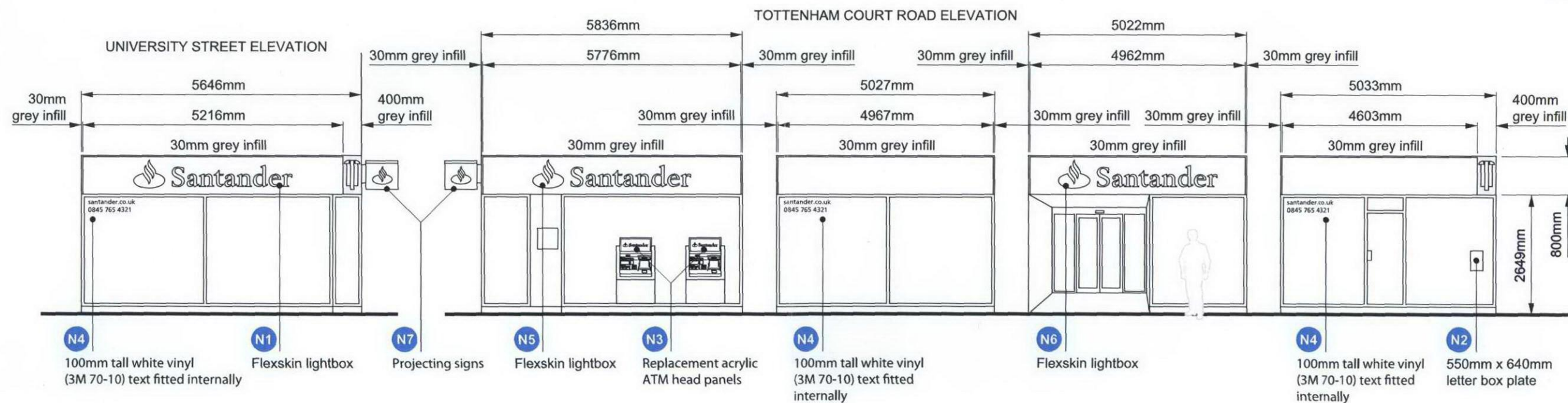
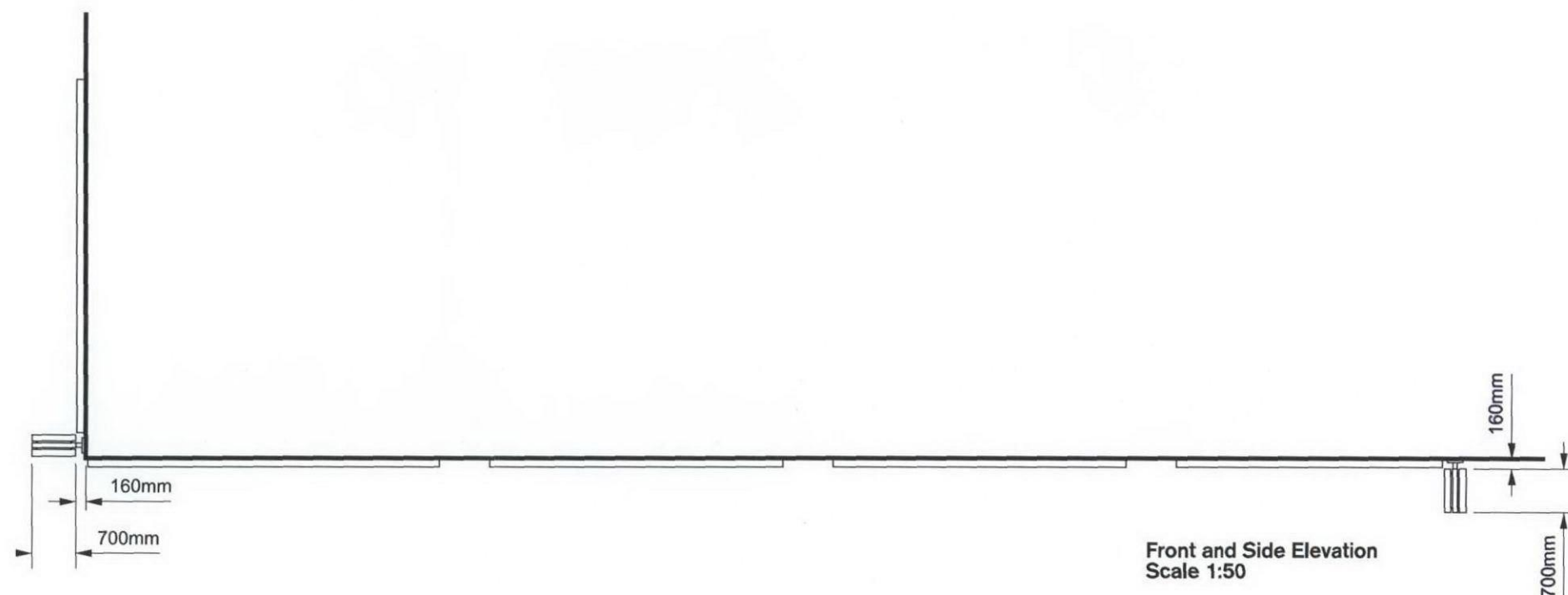


All sizes are approximate and subject to technical survey and confirmation by sign contractor prior to fabrication.

Item	Description
N1,N5,N6	F6: Extruded aluminum flex face signcase (140mm deep) retaining a decorated PVC skin illuminated by indirect LED's.
N2	X: Letterbox cover plate.
N3	H1: Replacement moulded acrylic ATM header graphic.
N4	V1: White vinyl URL and telephone number (100mm tall numerals) fitted internally unless restricted by tinted windows or anti-blast film.
N5	The existing projecting sign will need mounting on spacers to bring the sign forward so the depth of the flexface sign does not obstruct the view of the projecting sign.



RECEIVED 16 SEP 2009

**ENDPOINT LTD.**  
165 TOWER BRIDGE ROAD  
LONDON SE1 3LW

TEL: 020 7089 2670  
FAX: 020 7089 2671  
[www.endpoint.co.uk](http://www.endpoint.co.uk)

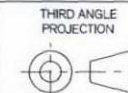


**TITLE:** SANTANDER — Tottenham court road

<b>MATERIAL</b>	N/a			<b>SHRINKAGE</b>	N/a
<b>FINISH</b>	N/a	<b>GENERAL WALL</b>	N/a	<b>GENERAL DRAFT</b>	N/a
<b>DRAWN BY</b>	JM	<b>CHECKED</b>	EF	<b>SCALE</b>	A3 @ 1:50

THIS DRAWING IS NOT  
TO BE USED FOR  
MANUFACTURE WITHOUT  
THE EXPRESS WRITTEN  
APPROVAL OF THE CLIENT

© ENDPOINT, LTD.  
CONFIDENTIAL:  
UNAUTHORISED COPYING,  
DISCUSSION & DISTRIBUTION  
PROHIBITED



TOLERANCES	
UNLESS OTHERWISE STATED	
0	$\pm 0.5$
0.0	$\pm 0.1$
0.00	$\pm 0.05$

ALL DIMENSIONS IN mm

DRG No. 3606 — 647— a1