

ALL CHANGES TO BE DONE ON CAD

REV	DATE	DESCRIPTION	APPROVED
A	22/07/2009	Initial issue	PV
B	10/08/2009	Illumination changed to LED	PV

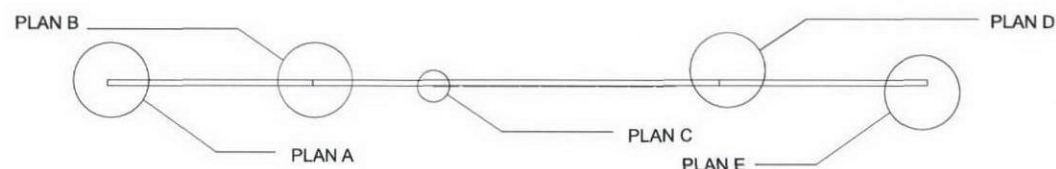
Construction details

OVERHEAD
LIGHT TROUGH

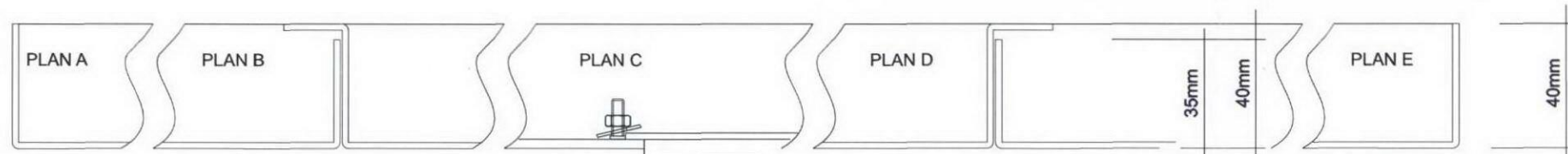


PANEL JOINT

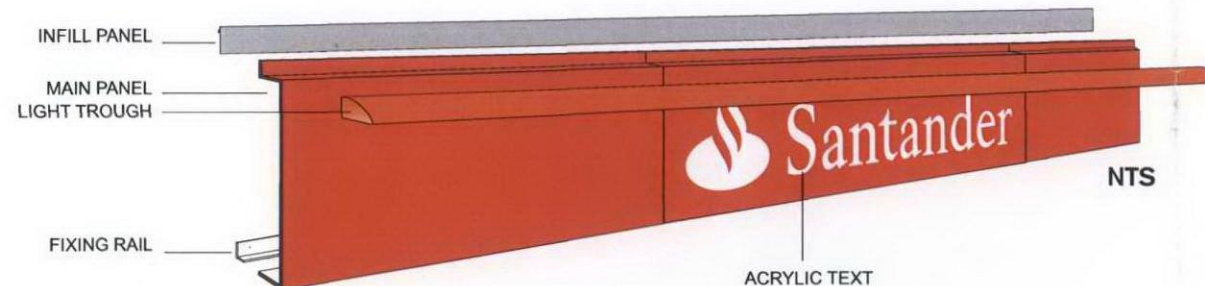
PANEL JOINT



Scale: 1:50



Scale: 1:2



NTS

ACRYLIC TEXT

MAXIMUM ILLUMINATION = 800 CANDELAS PER M²

CRUSH FOLDED ALUMINIUM TOP INFILL FULL LENGTH POWDER COATED RAL 7012 INFILLS ARE TO BE PRODUCED 200MM HIGH TO FIT ALL SCENARIOS.

THE ONLY EXCEPTION WOULD BE ON FASCIAS OVER 1200MM HIGH, IN WHICH CASE A LARGER 'SPECIAL' INFILL WOULD BE REQUIRED (SITE SPECIFIC).

SPECIAL FOLDED
14G ALUMINIUM
FIXING RAILS
FINISHED RED
RAL 3020

170mm

110mm

20mm

40mm

16G ALUMINIUM LIGHT UNIT
FINISHED RED RAL 3020
WITH 20MM FOAMEX END
CAPS FINISHED RED 3020

72mm

6mm DIA

20MM LONG
SPACE
TUBES
FINISHED
RED TO
MATCH RAL
3020

ROLLED STUCCO REFLECTOR PLATE
FITTED INSIDE TROUGH SECTION

Sign to be illuminated by
means of Philips LED units:
LPM15w-6300-K200
(NOTE: Lens caps to be removed
to increase light spread from
LED unit)

For information regarding
the quantity of units to be
fitted in each sign type, please
refer to Philips specifications.

3MM OPAL 030 DIFFUSER

Scale: 1:2

8mm OPAL 050
ACRYLIC STEP
INLAID WITH
2mm SHOULDER

ALUMINIUM
FULL LENGTH
FIXING RAILS
POWDER COATED
TO MATCH RED
RAL 3020.

40mm

Dome head screws

ENDPOINT LTD.
165 TOWER BRIDGE RD
LONDON SE1 3LW

TEL: 020 7089 2670
FAX: 020 7089 2671
www.endpoint.co.uk

Endpoint

THIS DRAWING IS NOT
TO BE USED FOR
MANUFACTURE WITHOUT
THE EXPRESS WRITTEN
APPROVAL OF THE CLIENT

© ENDPOINT LTD.
CONFIDENTIAL:
UNAUTHORISED COPYING,
DISCUSSION & DISTRIBUTION
PROHIBITED

TITLE: SIGN TYPE F1 – TRAY SIGN WITH TROUGH LIGHT

MATERIAL	SEE DETAILS ABOVE	SHRINKAGE	N/a
FINISH	SEE NOTES	GENERAL WALL	N/a
DRAWN BY	RW	CHECKED	EF

THIRD ANGLE
PROJECTION



TOLERANCES
UNLESS OTHERWISE STATED
0 ±0.5
0.0 ±0.1
0.00 ±0.05

ALL DIMENSIONS IN mm

DRG No. 3606-657 N1

ALL CHANGES TO BE DONE ON CAD

REV	DATE	DESCRIPTION	APPROVED
A	22/07/2009	Initial issue	PV
B	10/08/2009	Illumination changed to LED	PV

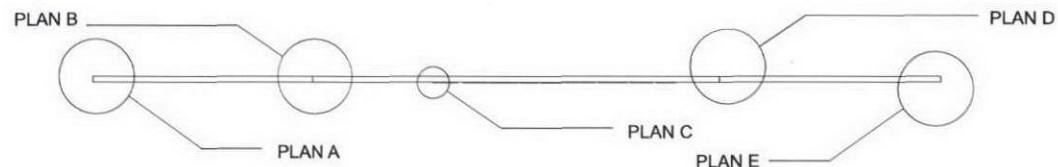
Construction details

OVERHEAD
LIGHT TROUGH

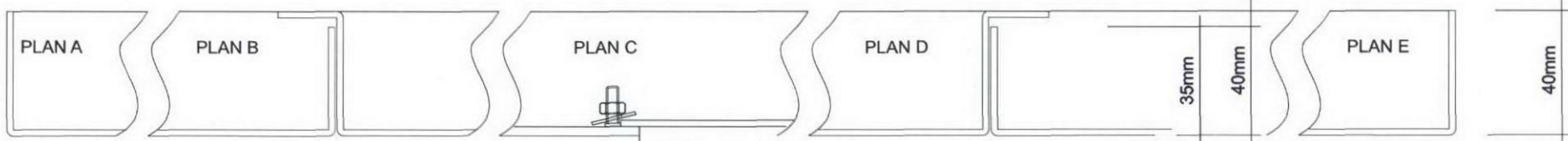


PANEL JOINT

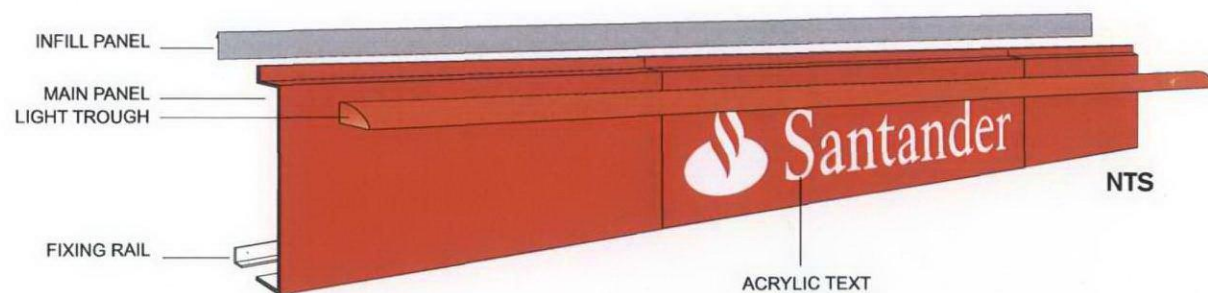
PANEL JOINT



Scale: 1:50



Scale: 1:2



NTS

MAXIMUM ILLUMINATION = 800 CANDELAS PER M²

CRUSH FOLDED ALUMINIUM TOP INFILL FULL LENGTH POWDER COATED RAL 7012
INFILLS ARE TO BE PRODUCED 200MM HIGH TO FIT ALL SCENARIOS.

THE ONLY EXCEPTION WOULD BE ON FASCIAS OVER 1200MM HIGH, IN WHICH CASE
A LARGER 'SPECIAL' INFILL WOULD BE REQUIRED (SITE SPECIFIC).

SPECIAL FOLDED
14G ALUMINIUM
FIXING RAILS
FINISHED RED
RAL 3020

16G ALUMINIUM LIGHT UNIT
FINISHED RED RAL 3020
WITH 20MM FOAMEX END
CAPS FINISHED RED 3020

ROLLED STUCCO REFLECTOR PLATE
FITTED INSIDE TROUGH SECTION

Sign to be illuminated by
means of Philips LED units:
LPM15w-6300-K200
(NOTE: Lens caps to be removed
to increase light spread from
LED unit)

For information regarding
the quantity of units to be
fitted in each sign type, please
refer to Philips specifications.

3MM OPAL 030 DIFFUSER

Scale: 1:2

8mm OPAL 050
ACRYLIC STEP
INLAID WITH
2mm SHOULDER

ALUMINIUM
FULL LENGTH
FIXING RAILS
POWDER COATED
TO MATCH RED
RAL 3020.

40mm
Dome head screws

ENDPOINT LTD.
165 TOWER BRIDGE RD
LONDON SE1 3LW

TEL: 020 7089 2670
FAX: 020 7089 2671
www.endpoint.co.uk



THIS DRAWING IS NOT
TO BE USED FOR
MANUFACTURE WITHOUT
THE EXPRESS WRITTEN
APPROVAL OF THE CLIENT

© ENDPOINT LTD.
CONFIDENTIAL:
UNAUTHORISED COPYING,
DISCUSSION & DISTRIBUTION
PROHIBITED

TITLE: SIGN TYPE F1 – TRAY SIGN WITH TROUGH LIGHT

MATERIAL	SEE DETAILS ABOVE	SHRINKAGE	N/a
FINISH	SEE NOTES	GENERAL WALL	N/a
DRAWN BY	RW	CHECKED	EF

TOLERANCES UNLESS OTHERWISE STATED	ALL DIMENSIONS IN mm
0 ±0.5 0.0 ±0.1 0.00 ±0.05	DRG No. 3606-657 N5

ALL CHANGES TO BE DONE ON CAD

REV	DATE	DESCRIPTION	APPROVED
A	22/07/2009	Initial issue	PV
B	10/08/2009	Illumination changed to LED	PV

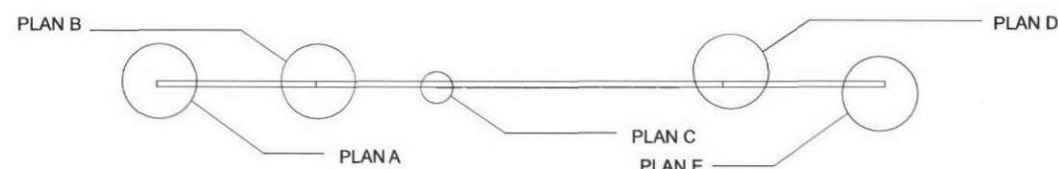
Construction details

OVERHEAD
LIGHT TROUGH

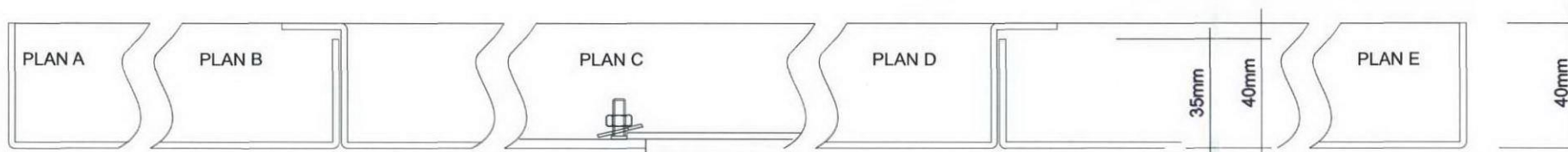


PANEL JOINT

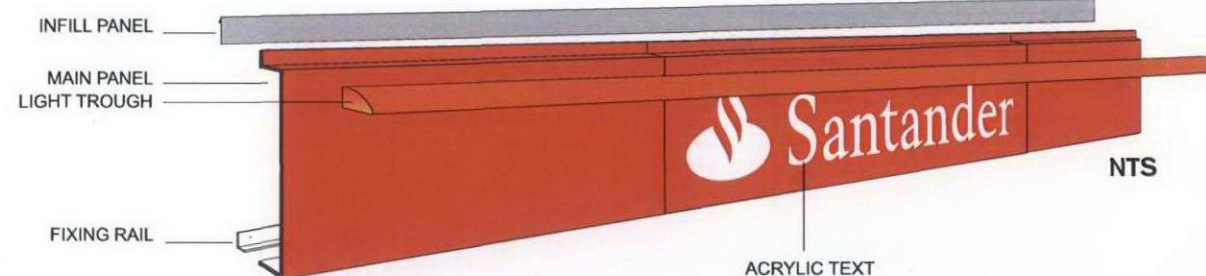
PANEL JOINT



Scale: 1:50



Scale: 1:2



NTS

MAXIMUM ILLUMINATION = 800 CANDELAS PER M²

CRUSH FOLDED ALUMINIUM TOP INFILL FULL LENGTH POWDER COATED RAL 7012
INFILLS ARE TO BE PRODUCED 200MM HIGH TO FIT ALL SCENARIOS.

THE ONLY EXCEPTION WOULD BE ON FASCIAS OVER 1200MM HIGH, IN WHICH CASE
A LARGER 'SPECIAL' INFILL WOULD BE REQUIRED (SITE SPECIFIC).

SPECIAL FOLDED
14G ALUMINIUM
FIXING RAILS
FINISHED RED
RAL 3020

16G ALUMINIUM LIGHT UNIT
FINISHED RED RAL 3020
WITH 20MM FOAMEX END
CAPS FINISHED RED 3020

ROLLED STUCCO REFLECTOR PLATE
FITTED INSIDE TROUGH SECTION

Sign to be illuminated by
means of Philips LED units:
LPM15w-6300-K200
(NOTE: Lens caps to be removed
to increase light spread from
LED unit)

For information regarding
the quantity of units to be
fitted in each sign type, please
refer to Philips specifications.

3MM OPAL 030 DIFFUSER

Scale: 1:2

8mm OPAL 050
ACRYLIC STEP
INLAID WITH
2mm SHOULDER

ALUMINIUM
FULL LENGTH
FIXING RAILS
POWDER COATED
TO MATCH RED
RAL 3020.

Dome head screws

ENDPOINT LTD.
165 TOWER BRIDGE RD
LONDON SE1 3LW

TEL: 020 7089 2670
FAX: 020 7089 2671
www.endpoint.co.uk

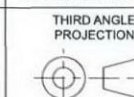
Endpoint

THIS DRAWING IS NOT
TO BE USED FOR
MANUFACTURE WITHOUT
THE EXPRESS WRITTEN
APPROVAL OF THE CLIENT

© ENDPOINT, LTD.
CONFIDENTIAL:
UNAUTHORISED COPYING,
DISCUSSION & DISTRIBUTION
PROHIBITED

TITLE: SIGN TYPE F1 – TRAY SIGN WITH TROUGH LIGHT

MATERIAL	SEE DETAILS ABOVE	SHRINKAGE	N/a
FINISH	SEE NOTES	GENERAL WALL	N/a
DRAWN BY	RW	CHECKED	EF
		SCALE	1:50 @ A3



TOLERANCES
UNLESS OTHERWISE STATED
0 ±0.5
0.0 ±0.1
0.00 ±0.05

ALL DIMENSIONS IN mm

DRG No. 3606-657 N6

RECEIVED
09 OCT 2009

	A	B	C	D	E	F	G	H	I	J	K	L	M	N	O	P		
	ALL CHANGES TO BE DONE ON CAD												REV	DATE	DESCRIPTION			APPROVED
1													A	18/09/2009	Window manifestation			N/a
2													B	06/10/2009	Amended scale notes			N/a
3																		
4																		
5																		
6																		
7																		
8																		
9																		
10																		
11																		


1000mm

santander.co.uk
0845 765 4321

100mm

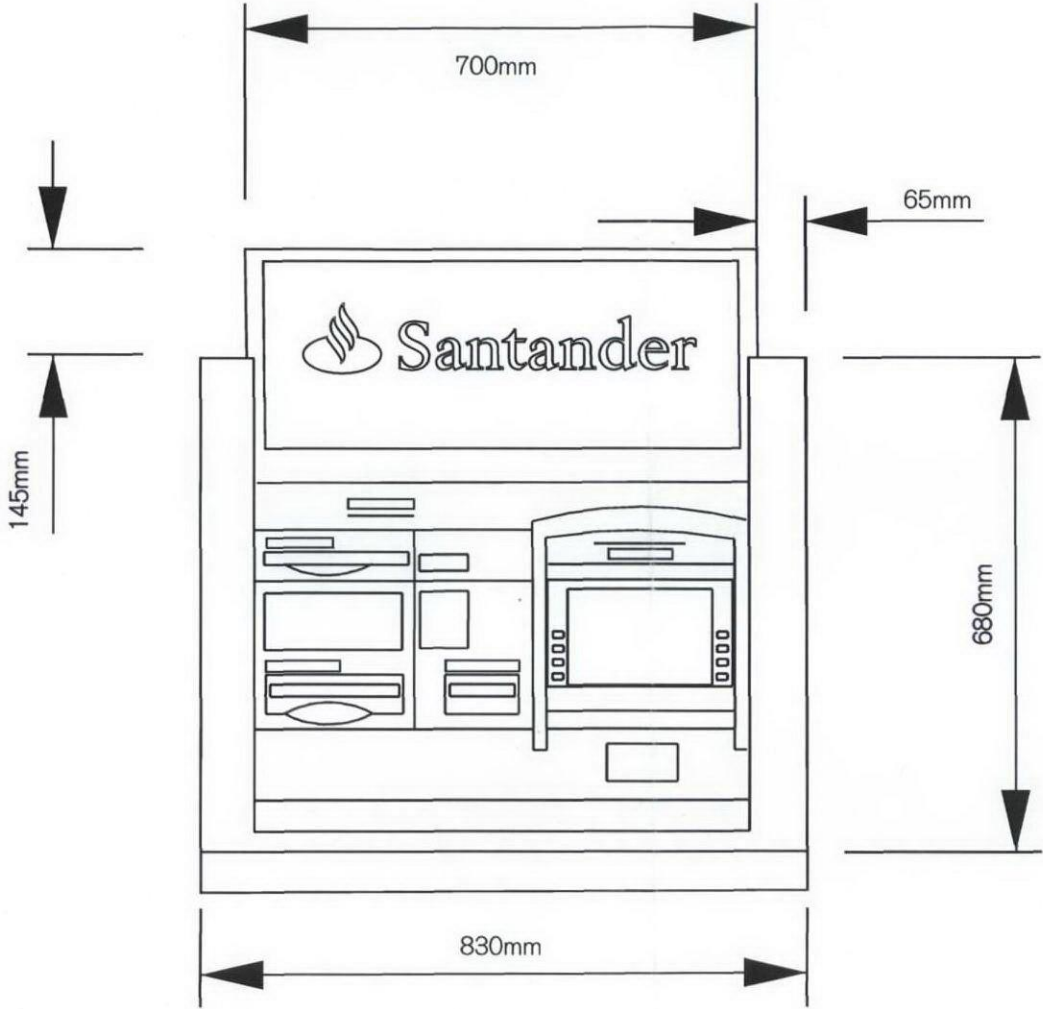
100mm tall white vinyl (3M 70-10)
text fitted internally

RECEIVED
09 OCT 2009

ENDPOINT LTD. 165 TOWER BRIDGE ROAD LONDON SE1 3LW TEL: 020 7089 2670 FAX: 020 7089 2671 www.endpoint.co.uk				TITLE: SANTANDER — Window manifestation			
MATERIAL		N/a		SHRINKAGE		N/a	
FINISH		N/a		GENERAL WALL		N/a	
DRAWN BY		JM		CHECKED		EF	
SCALE				GENERAL DRAFT		N/a	
				SCALE		1:10 @ A3	
THIS DRAWING IS NOT TO BE USED FOR MANUFACTURE WITHOUT THE EXPRESS WRITTEN APPROVAL OF THE CLIENT		© ENDPOINT, LTD. CONFIDENTIAL: UNAUTHORISED COPYING, DISCUSSION & DISTRIBUTION PROHIBITED				TOLERANCES UNLESS OTHERWISE STATED 0 ±0.5 0.0 ±0.1 0.00 ±0.05	
						ALL DIMENSIONS IN mm	
						DRG No. 3606-647	

ALL CHANGES TO BE DONE ON CAD

REV	DATE	DESCRIPTION	APPROVED
A	18/09/2009	Scaled ATM drawing	N/a
B	06/10/2009	Amended scale notes	N/a



ATM drawing
Scale: 1:10

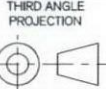
RECEIVED
09 OCT 2009

ENDPOINT LTD.
165 TOWER BRIDGE ROAD
LONDON SE1 3LW
TEL: 020 7089 2670
FAX: 020 7089 2671
www.endpoint.co.uk



THIS DRAWING IS NOT
TO BE USED FOR
MANUFACTURE WITHOUT
THE EXPRESS WRITTEN
APPROVAL OF THE CLIENT

© ENDPOINT LTD.
CONFIDENTIAL:
UNAUTHORISED COPYING,
DISCUSSION & DISTRIBUTION
PROHIBITED



TITLE: SANTANDER — Tottenham Court Road

MATERIAL	N/a	SHRINKAGE	N/a
FINISH	N/a	GENERAL WALL	N/a
DRAWN BY	KS	CHECKED	EF
		SCALE	1:10 @ A3

TOLERANCES
UNLESS OTHERWISE STATED
0 ±0.5
0.0 ±0.1
0.00 ±0.05


ALL DIMENSIONS IN mm


DRG No. 3606-647-2 A

	A	B	C	D	E	F	G	H	I	J	K	L	M	N	O	P		
	ALL CHANGES TO BE DONE ON CAD												REV	DATE	DESCRIPTION			APPROVED
													A	18/09/2009	Initial issue			EV
1																		
2																		
3																		
4																		
5																		
6																		
7																		
8																		
9																		
10																		
11																		

550mm

640mm






2mm aluminium finished red with white silk screen printed logo

RECEIVED

09 JUL 2009

ENDPOINT LTD. 165 TOWER BRIDGE RD LONDON SE1 3LW TEL: 020 7089 2670 FAX: 020 7089 2671 www.endpoint.co.uk			TITLE: SIGN TYPE LB1 – LETTER BOX			
MATERIAL		SEE DETAILS ABOVE		SHRINKAGE		N/a
FINISH		SEE NOTES	GENERAL WALL	N/a	GENERAL DRAFT	N/a
DRAWN BY		RW	CHECKED	EF	SCALE	1:10 @ A3
THIS DRAWING IS NOT TO BE USED FOR MANUFACTURE WITHOUT THE EXPRESS WRITTEN APPROVAL OF THE CLIENT		© ENDPOINT LTD. CONFIDENTIAL: UNAUTHORISED COPYING, DISCUSSION & DISTRIBUTION PROHIBITED		THIRD ANGLE PROJECTION		TOLERANCES UNLESS OTHERWISE STATED 0 ±0.5 0.0 ±0.1 0.00 ±0.05
						ALL DIMENSIONS IN mm
						DRG No. 3606-647-123A