



# Optimum 300 Platform Lift

## About the Optimum 300

The Optimum 300 offers a Part M compliant solution to small changes in levels and the unit is suitable for internal or external use. This open style platform lift has been designed with aesthetics and safety in mind giving added comfort to users.

A safety gate is installed on the landing at the higher floor and easy to use controls make this the ideal unit for changes in level that are just a few steps high. This unit is available in an open-through configuration and offers 500mm to 1000mm travel.



## Standard features

- Manual double doors
- Powder coated in RAL 7004 light grey
- 1 phase (frequency inverter)
- Soft start/stop
- Keyswitch
- Lifting heights 500mm to 1000mm
- Lifts up to 300kg
- Footprint size of 1300mm x 1780mm

## Installation

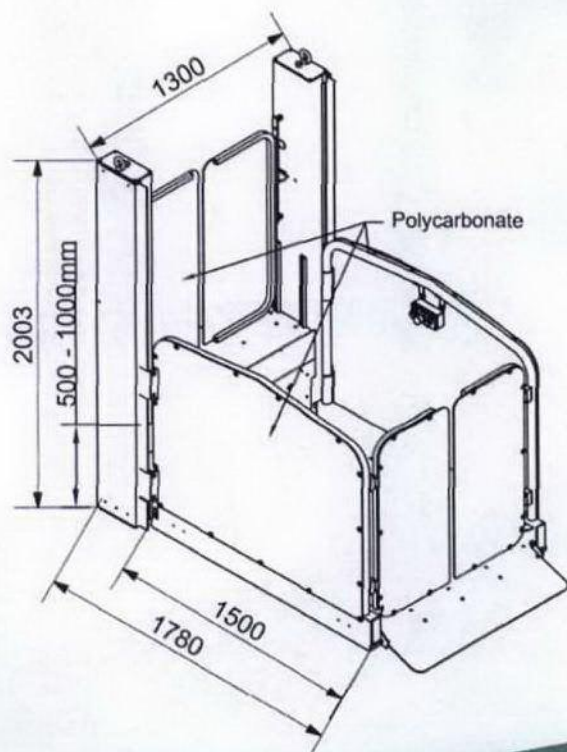
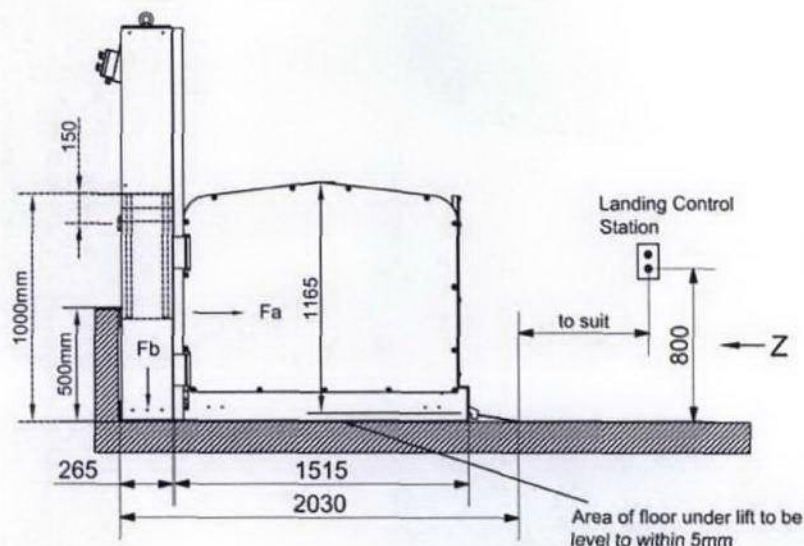
Installation of the self-standing Optimum 300 will normally be complete within one day.



Ability Lifts Limited  
Suite 109  
Devonshire House  
49 Eldon Street  
Sheffield  
S1 4NR  
Tel: 0845 006 8803  
Fax: 0845 006 8804  
Email: [sales@abilitylifts.co.uk](mailto:sales@abilitylifts.co.uk)  
Web: [www.abilitylifts.co.uk](http://www.abilitylifts.co.uk)

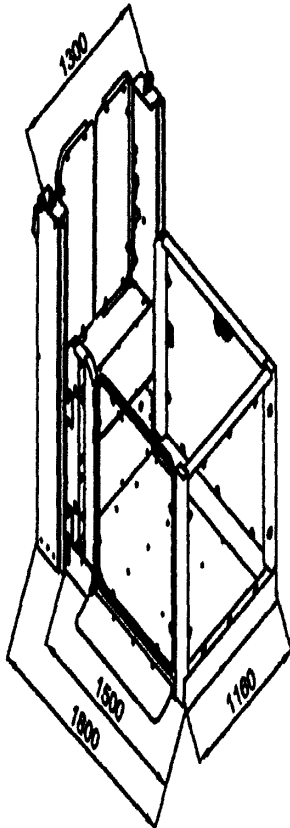


## Dimensions



Access for ALL people

# Optimum 300 Adjacent - Data Sheet Platform Size 1435mm x 1040mm



## Clearances:

"A" = Horizontal distance to adjacent surface  
 100mm if smooth (local protruberances do not exceed 10mm)  
 325mm if irregular

## Anchors:

Horizontal & Vertical 2 minimum : see installation information for further details of substrate requirements and type

## Platform Floor Finish :

Standard - Aluminium Chequer Plate

Special - Altro walking 20

## Electrical Supply:

3ph L, N, & E, 20amp lockable Isolator positioned within 2 Meters of upper landing control station.

## Technical Data:

Rated capacity : 300kg / 2 Persons

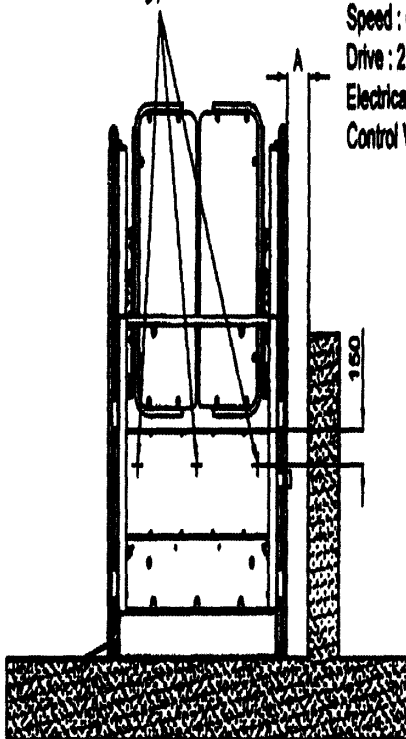
Speed : 0,08m/s

Drive : 2,5 kw Electrical Motor

Electrical Connection : 5 x 1,5mm sq

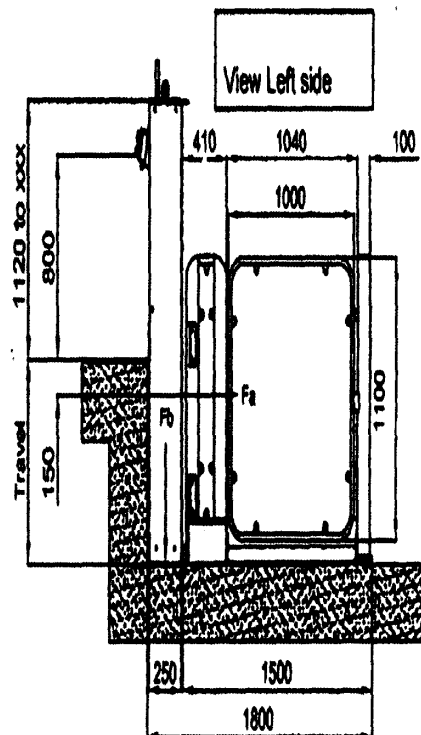
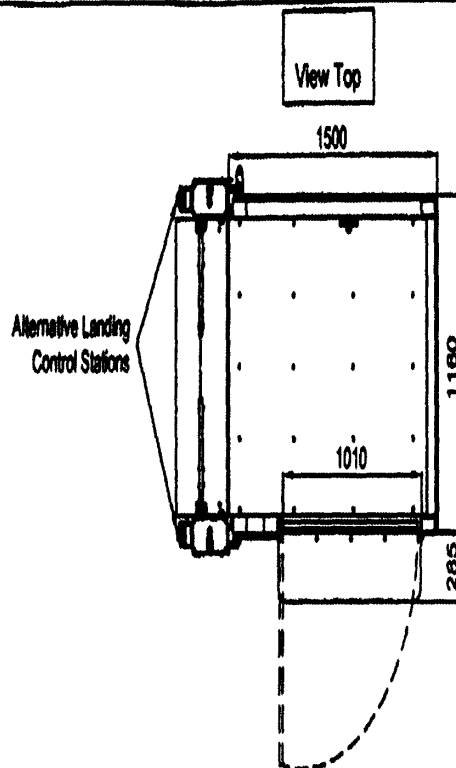
Control Voltage : 24 Volts

Typical horizontal fixing points.



HORIZONTAL FORCES	
Travel mm	Total Anchor Force Fa kN
400	21.5
600	17.0
800	14.5
1000	11.0
1200	8.5
1400	7.5
1600	6.5
1800	5.5
2000	4.5
2200	4.0
2400	3.5
2600	3.25
2800	3.0

Fb = Vertical force of 10kn, spread over area of 1300mm x 250mm.



Aut.	Varuv.	Nome	Material	Ref.
			1100	
			1500	
			1800	
			250	
			410	
			800	
			1040	
			1100	
			1500	
			1800	
			250	
			410	
			800	
			1040	
			1100	
			1500	
			1800	
			250	
			410	
			800	
			1040	
			1100	
			1500	
			1800	
			250	
			410	
			800	
			1040	
			1100	
			1500	
			1800	
			250	
			410	
			800	
			1040	
			1100	
			1500	
			1800	
			250	
			410	
			800	
			1040	
			1100	
			1500	
			1800	
			250	
			410	
			800	
			1040	
			1100	
			1500	
			1800	
			250	
			410	
			800	
			1040	
			1100	
			1500	
			1800	
			250	
			410	
			800	
			1040	
			1100	
			1500	
			1800	
			250	
			410	
			800	
			1040	
			1100	
			1500	
			1800	
			250	
			410	
			800	
			1040	
			1100	
			1500	
			1800	
			250	
			410	
			800	
			1040	
			1100	
			1500	
			1800	
			250	
			410	
			800	
			1040	
			1100	
			1500	
			1800	
			250	
			410	
			800	
			1040	
			1100	
			1500	
			1800	
			250	
			410	
			800	
			1040	
			1100	
			1500	
			1800	
			250	
			410	
			800	
			1040	
			1100	
			1500	
			1800	
			250	
			410	
			800	
			1040	
			1100	
			1500	
			1800	
			250	
			410	
			800	
			1040	
			1100	
			1500	
			1800	
			250	
			410	
			800	
			1040	
			1100	
			1500	
			1800	
			250	
			410	
			800	
			1040	
			1100	
			1500	
			1800	
			250	
			410	
			800	
			1040	
			1100	
			1500	
			1800	
			250	
			410	
			800	
			1040	
			1100	
			1500	
			1800	
			250	
			410	
			800	
			1040	
			1100	
			1500	
			1800	
			250	
			410	
			800	
			1040	
			1100	
			1500	
			1800	
			250	
			410	
			800	
			1040	
			1100	
			1500	
			1800	
			250	
			410	
			800	
			1040	
			1100	
			1500	
			1800	
			250	
			410	
			800	
			1040	
			1100	
			1500	
			1800	
			250	
			410	
			800	
			1040	
			1100	
			1500	
			1800	
			250	
			410	
			800	
			1040	
			1100	
			1500	
			1800	
			250	
			410	
			800	
			1040	
			1100	
			1500	
			1800	
			250	
			410	
			800	
			1040	
			1100	
			1500	
			1800	
			250	
			410	
			800	
			1040	
			1100	
			1500	
			1800	
			250	
			410	
			800	
			1040	
			1100	
			1500	
			1800	
			250	
			410	
			800	
			1040	
			1100	
			1500	
			1800	
			250	
			410	
			800	
			1040	
			1100	
			1500	
			1800	
			250	
			410	
			800	
			1040	
			1100	
			1500	
			1800	
			250	
			410	
			800	
			1040	
			1100	
			1500	
			1800	
			250	
			410	
			800	
			1040	
			1100	
			1500	
			1800	
			250	
			410	
			800	
			1040	
			1100	
			1500	
			1800	
			250	
			410	
			800	
			1040	
			1100	
			1500	
			1800	
			250	
			410	
			800	
			1040	
			1100	
			1500	
			1800	
			250	
			410	
			800	
			1040	
			1100	
			1500	
			1800	
			250	
			410	
			800	
			1040	
			1100	
			1500	
			1800	
			250	
			410	
			800	
			1040	
			1100	
			1500	
			1800	
			250	
			410	
			800	
			1040	
			1100	
			1500	
			1800	
			250	
			410	
			800	
			1040	
			1100	
			1500	
			1800	
			250	
			410	
			800	
			1040	
			1100	
			1500	
			1800	
			250	
			410	
			800	
			1040	
			1100	
			1500	
			1800	
			250	
			410	
			800	
			1040	
			1100	
			1500	
			1800	
			250	
			410	
			800	
			1040	
			1100	
			1500	
			1800	
			250	
			410	
			800	
			1040	
			1100	
			1500	
			1800	
			250	
			410	
			800	
			1040	
			1100	
			1500	
			1800	
			250	
			410	
			800	
			1040	
			1100	
			1500	
			1800	
			250	
			410	
			800	
			1040	
			1100	
			1500	
			1800	
			250	
			410	
			800	
			1040	
			1100	
			1500	
			1800	
			250	
			410	
			800	
			1040	
			1100	
			1500	
			1800	
			250	
			410	
			800	
			1040	
			1100	
			1500	
			1800	
			250	
			410	
			800	
			1040	
			1100	
			1500	
			1800	
			250	
			410	
			800	
			1040	
			1100	
			1500	
			1800	
			250	
			410	
			800	
			1040	
			1100	
			1500	
			1800	
			250	
			410	
			800	
			1040	
			1100	
			1500	
			1800	
			250	
			410	
</				

## **Optimum 300 Adjacent Specification**

Travel height (Between 500mm and 2000mm)	510mm
Height required above top floor level	2100mm
Footprint shaft size (Plus ramp to appropriate side)	1300mm Width x 1800mm Length
Platform size	1040mm Width x 1435mm Length
Platform height	1100mm
Pit depth (for bellows option only)	Not required
Installation space required	Minimum clearance of 150mm between lift & any flank wall
Drive system	Double screw & nut
Power supply	240v, 10amp, 1 phase
Configuration	Open Adjacent
Door operation	Manual Operation
Part M compliant pushes and alarm	Included
Structure & platform finish	Powder coated on galvanised steel
Platform & gate infill panels	Transparent polycarbonate
Door on long side with standard platform	Included
Key operation with indication light	Included
Underside of platform safety device	Safety under tray
Platform floor covering	Standard
Voice annunciation	Not required
12 months maintenance	Included

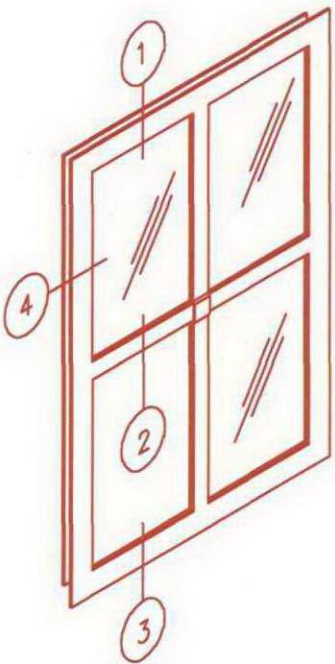
This is a very special product and has many excellent features that are designed to make it aesthetically pleasing, easy to use and very reliable. The items detailed below are included as standard and at **no extra cost**

- **Automatic folding lower ramp**
- Safety platform under tray
- Adjacent entry and exit
- 300kg safe working load
- Centre opening gates to landing
- Single opening gate on the platform
- **Tough polycarbonate side panels and gate**
- **Aluminium chequer plate floor**
- **Key Operation + indication lights at landing**
- **Part M compliant push units and alarm**
- **1435mm x 1040mm platform size**
- Footprint **1800mm x 1300mm** (plus ramp)
- Travel between 500mm and 2000mm (**Actual 510mm**)
- 240v power supply
- Screw and nut drive system
- **Hard wearing and attractive powder coat on galvanised steel**
- Colour light grey RAL 7004
- **12 months maintenance**



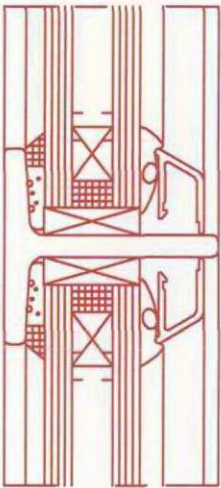
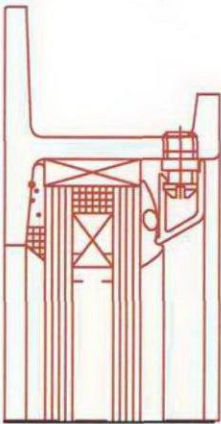


Corporate W20 Fixed Light

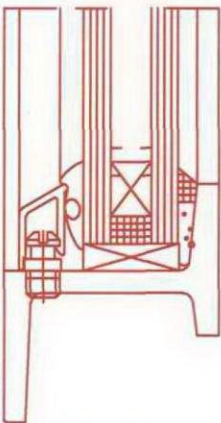


Fixed Light  
(Unequal Leg Shown)

SECTION 1



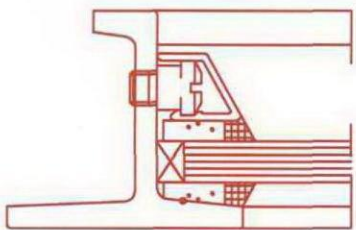
SECTION 2  
OPTIONAL  
GLAZING BAR



SECTION 3  
(THIS SECT. SHOWN  
GLAZED EXTERNALLY)

OUTSIDE

SECTION 4  
(THIS SECT. SHOWN  
SINGLE GLAZED)



STEEL  
B1

© CRITTALL WINDOWS LTD. 2005

Do not scale from this drawing  
All dimensions to be checked on site

Notes

Annotations

Drawing type

Client

Project

Title

Scale

Date

Drawn

Checked

Design

Rev

Watts

Watts Group PLC  
1 Great Tower Street  
London, EC3R 5AA  
T: +44 (0)20 7280 8000  
F: +44 (0)20 7280 8001  
W: [Watts-International.com](http://Watts-International.com)

RECEIVED 02 OCT 2007

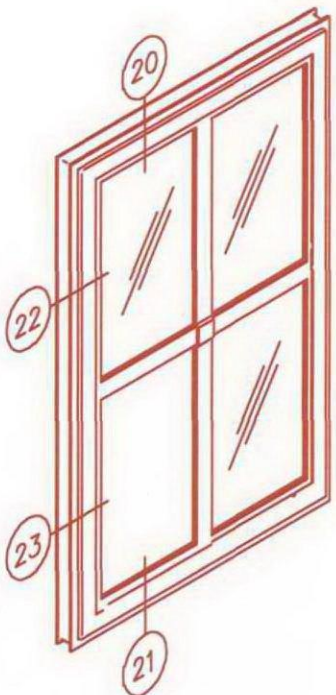
Watts-International.com

SCALE 1:10A3

CRITTALL W20 CORPORATE - W20

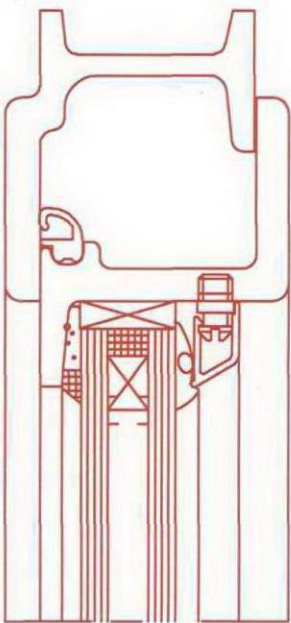


Corporate W20 Horizontally  
Pivotted Vents



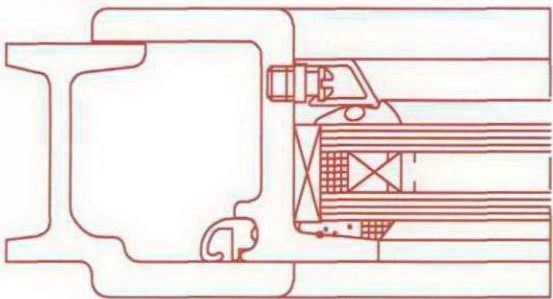
Horizontal Pivot  
(Equal Leg Shown)

SECTION 20



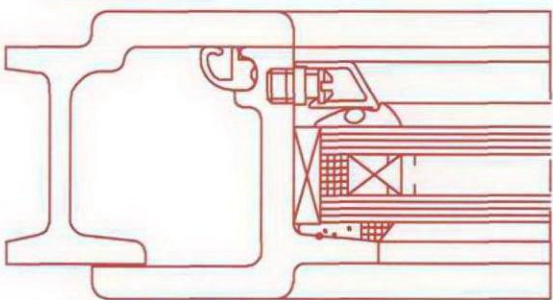
OUTSIDE

SECTION 22

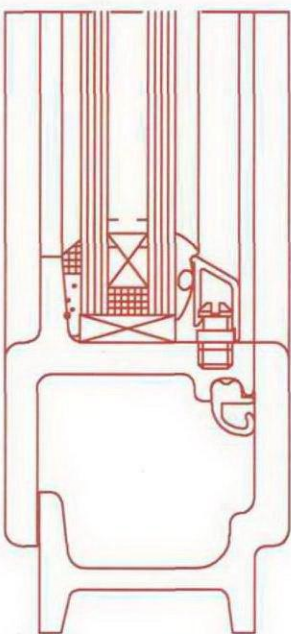


OUTSIDE

SECTION 23



OUTSIDE



SECTION 21

STEEL  
B6

© CRITTALL WINDOWS LTD. 2005

Do not scale from this drawing  
All dimensions to be checked on site

Notes

Amendments

Drawing Date

Client

Project

Title

Scale

Date

Drawn

Checked

Design

Rev

Watts

Watts Group PLC  
1 Great Tower Street  
London EC3R 5AA

T: +44 (0)20 7280 8000  
F: +44 (0)20 7280 8001

W: [Watts-International.com](http://Watts-International.com)

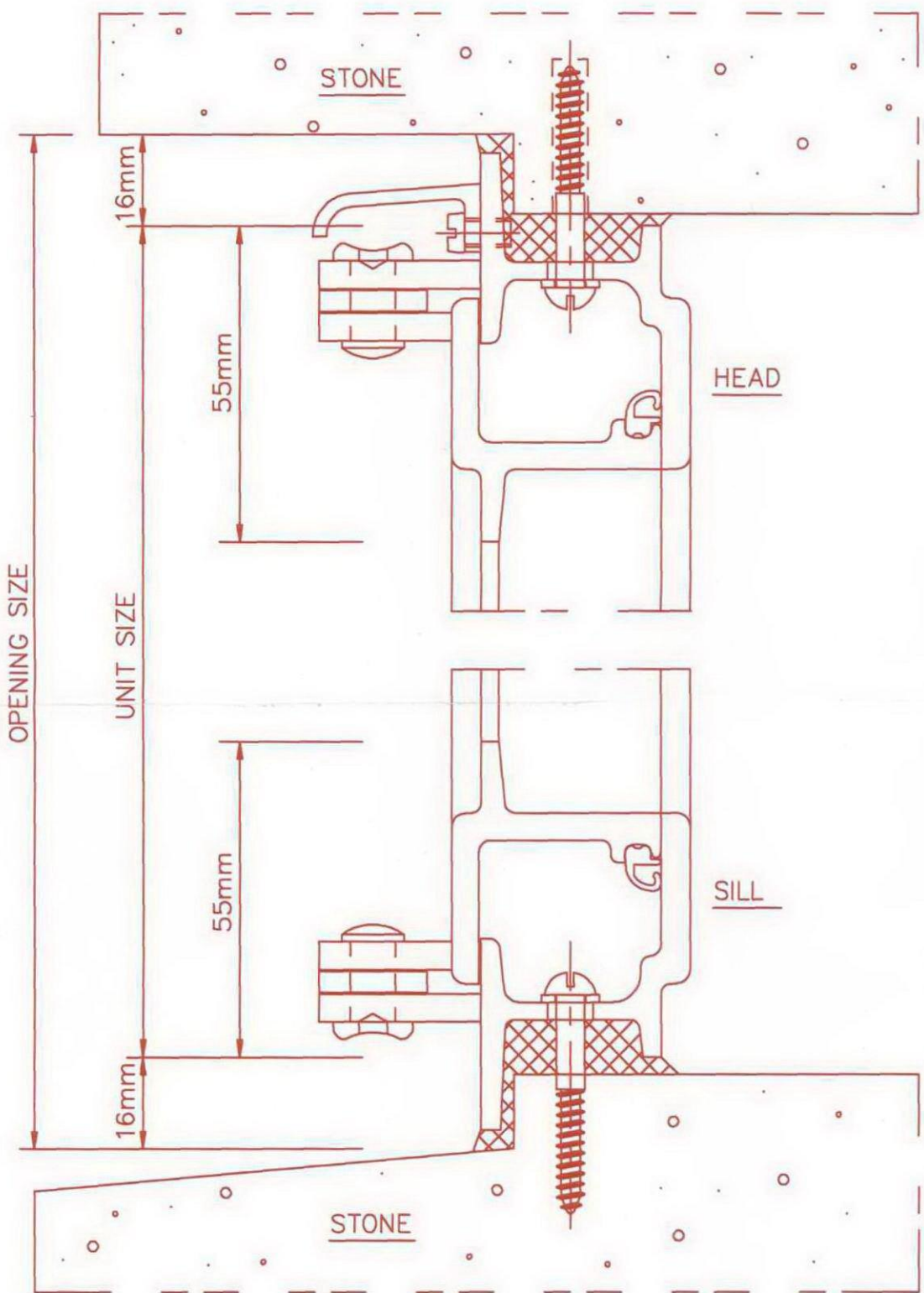
CRITTALL - CORPORATE W20 - HORIZONTAL PIVOT  
SCALE 1:10A3

RECEIVED 02 OCT 2009





Corporate W20  
Stone Boundary



TEELS  
E3

© CRITTALL WINDOWS LTD. 2005

Do not scale from this drawing  
All dimensions to be checked on site

Notes

Amendments

Drawing type

Client

Project

Title

Scale

Date

Drawing

Checked

Drawing

Rev

Watts

Watts Group PLC  
1 Great Tower Street  
London EC3R 5AA

T: +44 (0)20 7280 8000  
F: +44 (0)20 7280 8001  
W: [Watts-International.com](http://Watts-International.com)

RECEIVED 02 OCT 2009

CRITTALL CORPORATE W20 - STONE BOUNDARY

SCALE 1:10A3



**L10 - WINDOWS**

**316 STEEL WINDOWS AND DOORS:**

- Manufacturer and reference: Crittall Windows Ltd, **Corporate™ W20 range**
- Generally manufactured in accordance with BS 6510, W20 section.
- Weathertightness: To BS 6375: Part 1  
Exposure category (Design wind pressure): 1200/2000 (Pa) see Table AA
- For air permeability, water-tightness and wind resistance data see Table AA
- Operation and strength characteristics: To BS 6375: Part 2
- Construction: All frames have welded corners and are flat and square within normal manufacturing dimensional tolerances of +/- 1.5 mm. Intermediate bars are hot tenon riveted.
- Galvanising: All components including steel attachments, coupling members and ancillaries: hot-dipped after manufacture to BS EN ISO 1461:1999
- Glazing details: Will accept double glazing up to 16 mm in thickness.  
Glazing beads present no horizontal ledges on which dust and dirt can gather.
- Weatherstripping: Gaskets complying with BS 4255: Part 1 manufactured from EPDM secured into grooves of opening frame with adhesive.
- Ironmongery/accessories: See clause 328.
- Finish as delivered: Galvanised or Duralife™ (see clause 331) in a range of colours.

**325 STEEL WINDOWS AND DOORS:**

- Generally all the foregoing.
- Manufacturing undertaken in the Crittall factory by directly employed personnel.
- Design testing, manufacture and installation carried out under Quality Management Systems certified to BS EN ISO.9001

**328 IRONMONGERY/ACCESSORIES:**

- Standard provisions: See Brochure/Binder
- Standard finishes: Satin anodised or satin chrome according to fitting.
- Optional hardware/finishes: Available, consult Crittall.

## CRITTALL WINDOWS NBS SPECIFICATION CORPORATE™ W20 RANGE

### 331 FINISH COATING

- Type/reference: Epoxy free Duralife™ polyester powder coating using Interpon D36 powder.
- To BS 6497
- Preparation: Following galvanising, windows are chemically cleaned and pre-treated to provide surface to which powder coating will adhere.
- Covering: Minimum 60 microns on all significant surfaces.
- Colours: Wide selection available. See Crittall Colour Selector.
- Process: Coating will be undertaken in the same manufacturing plant as the frame fabrication.

### 552 METAL GLAZED SCREENS:

- Screen/composite window assemblies are available utilising all Crittall ranges.
- A full design/advice service is available.
- Coupling details; consult Crittall.

**Table AA**

TYPE OF OPENING LIGHT	EXPOSURE CATEGORY (Pa)	AIR PERMEABILITY: Not More Than 16m <sup>3</sup> /h/m JOINT, AT (Pa)	WATER TIGHTNESS: NO LEAKAGE, AT (Pa)	WIND RESISTANCE: NO DAMAGE & ONLY PERMISSABLE DEFLECTION, AT (Pa)
<b>Corporate™ W20</b>				
Vertical Pivot	1200	300	50	*1200
Horizontal Pivot	1200	300	100	*1200
Bottom Hung Open In	1200	300	100	*1200
Side Hung Open In	1200	300	100	*1200
Side Hung Open Out	2000	300	300	2000
Top Hung Open Out	2000	300	300	2000

*\* A higher wind resistance can be achieved.*

Date: 16/04/07

Crittall Windows Limited, Francis House, Freebournes Road, Witham, Essex, CM8 3UN. Tel: 01376 530 800  
Fax: 01376 530 801. E-mail: [hq@crittall-windows.co.uk](mailto:hq@crittall-windows.co.uk). website: <http://www.crittall-windows.com>



## Incomplete Reasons Schedule

**Application Ref:** 2009/4551/INVALID

**Address** Emmanuel Church Hall, Broomsleigh Street, West Hampstead,

**Associated Ref:** AssocAppNo1

**London, NW6 1QW**

Please review the items listed here as reasons for your application being incomplete.

It will assist with the checking of your new information if you can complete and return this sheet with your information, indicating what incomplete reasons have been addressed. Where you have not fully met the requirement or do not believe the information is necessary, please use the space provided to give reasons you believe should be taken into account.

Invalid Reason	Included Y/N	Comments or reason if not included
As your proposal includes the replacement of windows to all elevations, please provide existing and proposed North elevation drawings.	N	This is a wording mistake, windows are to be replaced only to the east and south elevations, as the west elevation is a party wall and the north is a 'part' party wall with an adjoining dwelling.
Please clarify whether you are proposing any external air conditioning units. You are advised that where a new noise-sensitive development is proposed in an area where existing noise sources are present (e.g. housing or hospital next to an existing industrial site, busy road, railway line), detailed acoustic, noise and vibration information in the form of a report is required. [See tables A-D Appendix of UDP and Camden Planning Guidance]	N	
Please provide manufacturer's specifications of the proposed doors and windows.	Y	Attached information within letter.

RECEIVED 02 OCT 2009

RECEIVED 02 OCT 2009

# Watts.

2 October, 2009

Our reference: SEB/SDJ/109720

Your reference: 2009/4551

**Watts Group PLC**

1 Great Tower Street  
London EC3R 5AA

T: +44 (0)20 7280 8000

F: +44 (0)20 7280 8001

E: london@watts-int.com

Development Control Planning Services  
London Borough of Camden  
Town Hall  
Argyle Street  
London WC1H 8ND

By Post

Dear Sir/Madam

## EMMANUEL CHURCH HALL - INVALID APPLICATION

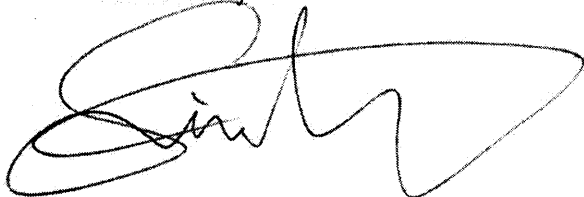
Thank you for your letter dated 1 October 2009 notifying us that the planning application issued on 24 September 2009 (ref 2009/4551) has been found to be invalid for the reasons listed on your received schedule.

I have attached along with this letter the received 'Incomplete Reasons Schedule' complete with comments and reasons for each of the individual reasons provided.

Furthermore, I have attached all the required information, including sectional drawings, NBS specification clauses and Crittall brochure for the Crittall Corporate W20 windows that we are proposing within our application. Please note we are intending to replace the timber Dornfell Street door entrance on a like for like basis, which will be supplied and installed by the selected main contractor.

If there any further problems with the application, please do not hesitate to contact me.

Yours sincerely



SIMON JOHNS

Building Surveyor

D: +44 (0)20 73988423

E: simon.johns@watts-int.com



Watts Group PLC is registered in England and Wales  
Registration number 5728557. VAT number 205 9609 61  
Directors: Tony Williams (Chairman - Non-Executive), Jo Stocks (Chief Executive), Peter Primett,  
Chris Knott, Ian Ford, Lisa Bonney (Company Secretary), Graham Triefus (Non-Executive)

Registered office: 1 Great Tower Street, London, EC3R 5AA. Regulated by RICS  
A member of the Watts Group, with an office network that covers Europe and the UK

watts-international.com



2 October, 2009

Our reference: SEB/SDJ/109720

Your reference: 2009/4551

---

For and on behalf of WATTS GROUP PLC

Enc: Incomplete Reasons Schedule  
Crittall Brochure  
Crittall Windows Corporate W20 Range Specification  
Corporate W20 Fixed Light Section  
Corporate W20 Horizontally Pivoted Vent Section  
Corporate W20 Stone Boundary Section