





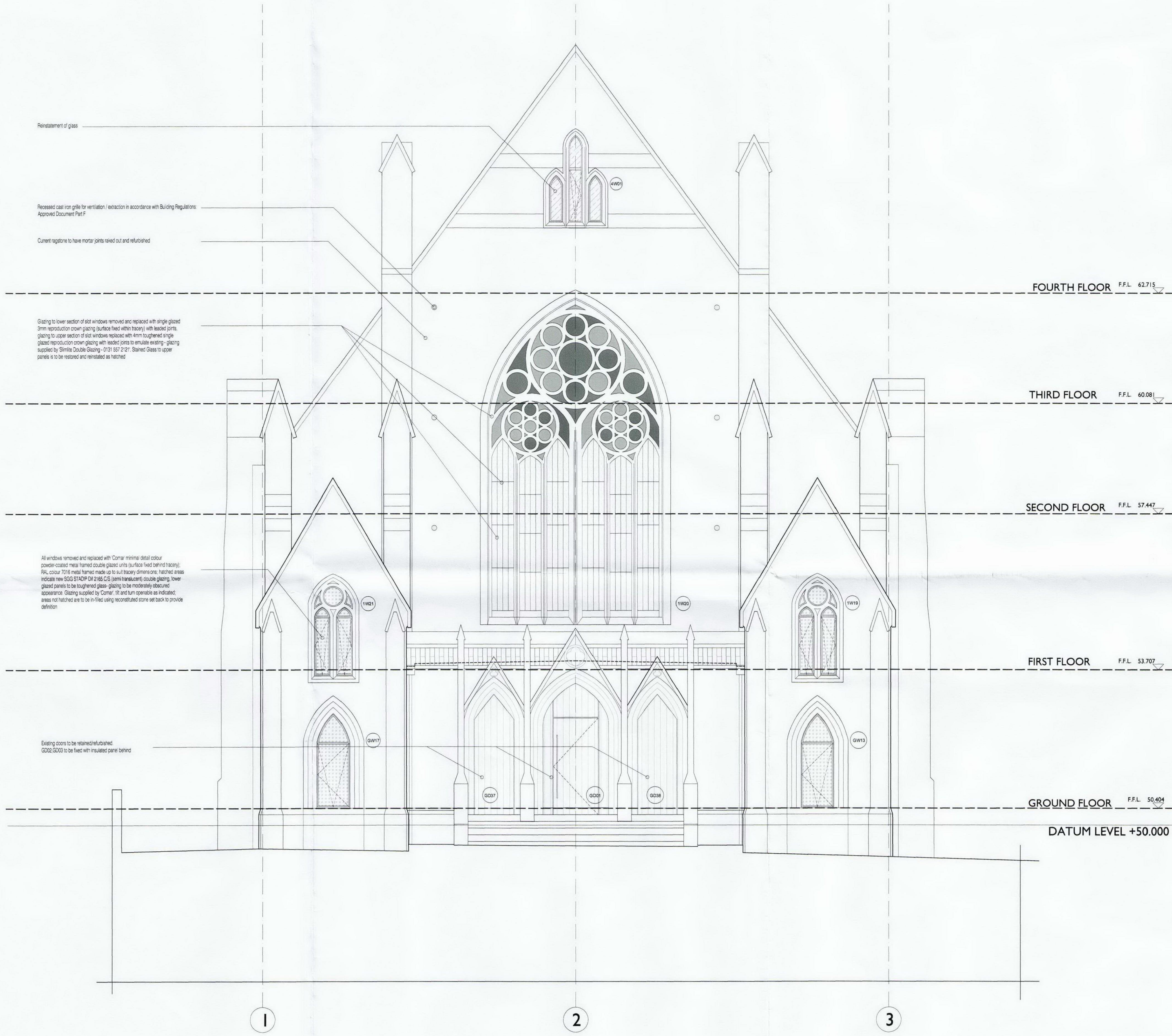


- notes**
1. do not scale this drawing
 2. all dimensions shall be checked and confirmed prior to commencement of any work
 3. all work and materials to be in accordance with current applicable statutory legislation and to comply with all relevant codes of practice and british standards
 4. drainage locations indicative, exact locations to be confirmed by builder on site before works commence.
 5. this drawing to be used only for status indicated.

- LEGEND**
-  Comar minimal detail colour powder-coated metal framed double glazed units (surface fixed within tracery); RAL colour 7016; metal framed made up to suit tracery dimensions; hatched areas indicate new clear double glazing - glazing supplied by Comar; tilt and turn operable as indicated
 -  Comar minimal detail colour powder-coated metal framed double glazed units (surface fixed within tracery); RAL colour 7016; metal framed made up to suit tracery dimensions; hatched areas indicate new SGG STADIP D1 2165 CIS (semi translucent) double glazing - glazing supplied by Comar; tilt and turn operable as indicated
 -  Single glazed 3mm reproduction crown glazing (surface fixed within tracery) with leaded joints - glazing supplied by Slimite Double Glazing
 -  Single glazed 4mm toughened reproduction crown glazing (surface fixed within tracery) with leaded joints - glazing supplied by Slimite Double Glazing
 -  Stained glass to be restored and reinstated within intricate tracery by others
 -  Existing doors to be retained/refurbished; GD02, GD03 to be fixed with insulated panel behind



rev _____ date _____

clear designs
architecture - interiors

the studio
38 church hill
loughton
essex
ig10 1la
t 0208 502 5585
www.cleardesigns.uk.com

client
Fitzrovia Construction Ltd

project
College Place
Highgate Road, London
NW5 1BS

drawing
Elevation to Highgate Road
Proposed

scale	date	status
1:50 (A1)	07/09	PLANNING

drawing no
PL/172-201

CAD ref
172-pl-201.dwg

© copyright clear designs ltd