



Fig 5. - 35-34 Chester Terrace taken 1943 Herbert Felton. National Monuments Record

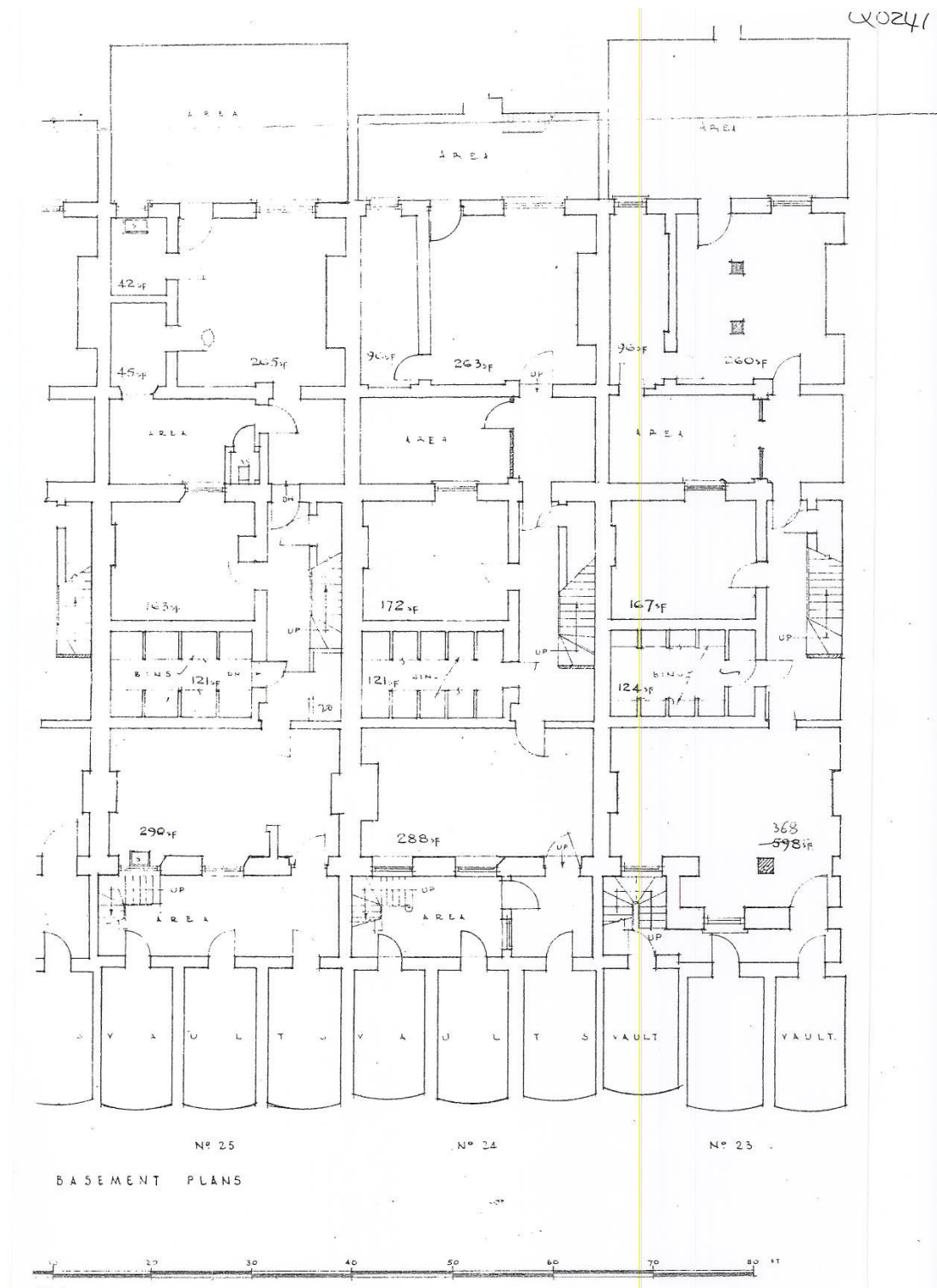


Fig 6. - Extract from Ministry of Works Plans April 1946 Basement Plans Nos: 25 – 23 Chester Terrace – The Crown Estate Archives





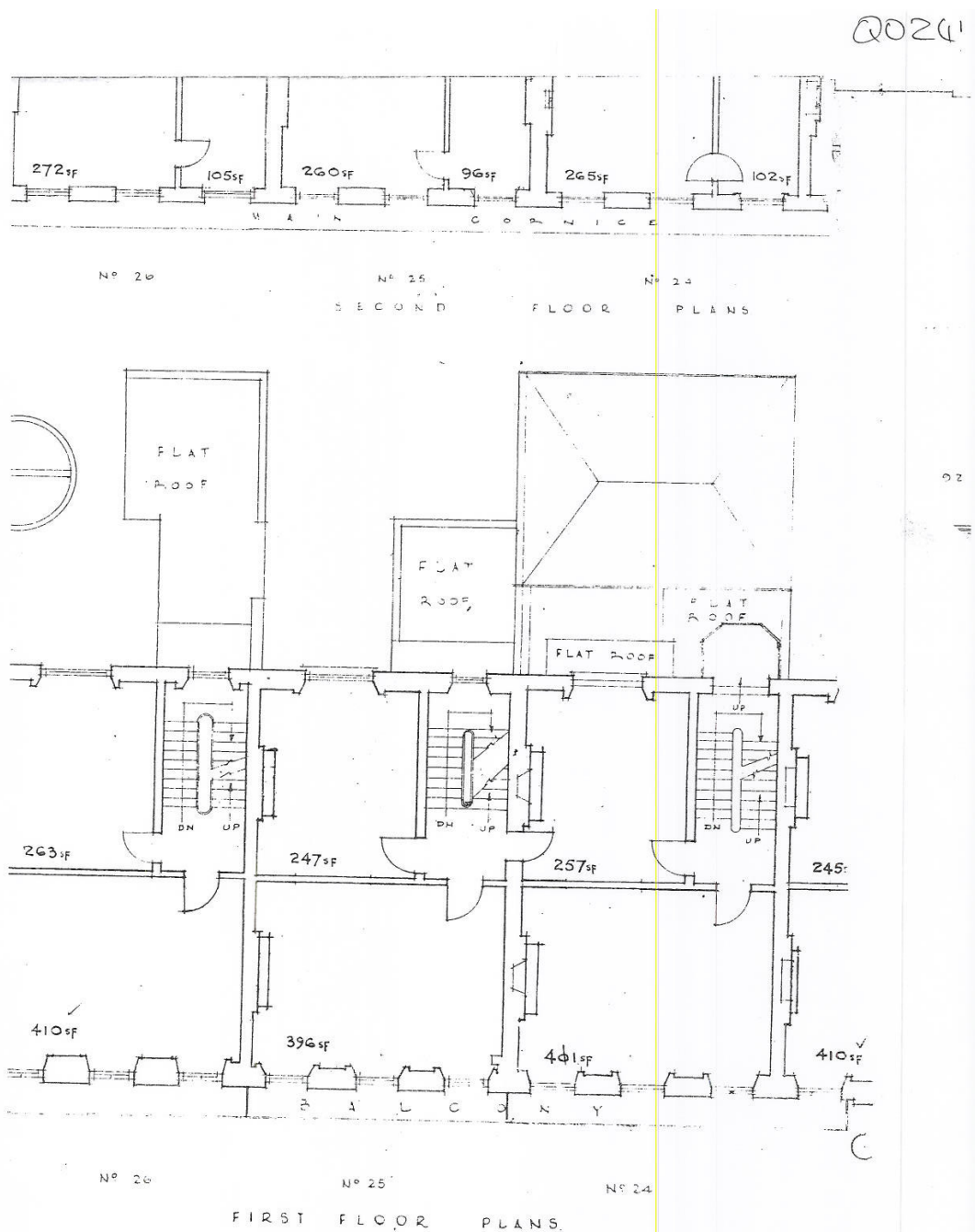


Fig 8. - Extract from Ministry of Works Plans April 1946 First Floor Plans Nos: 26 – 24 Chester Terrace – The Crown Estate Archives



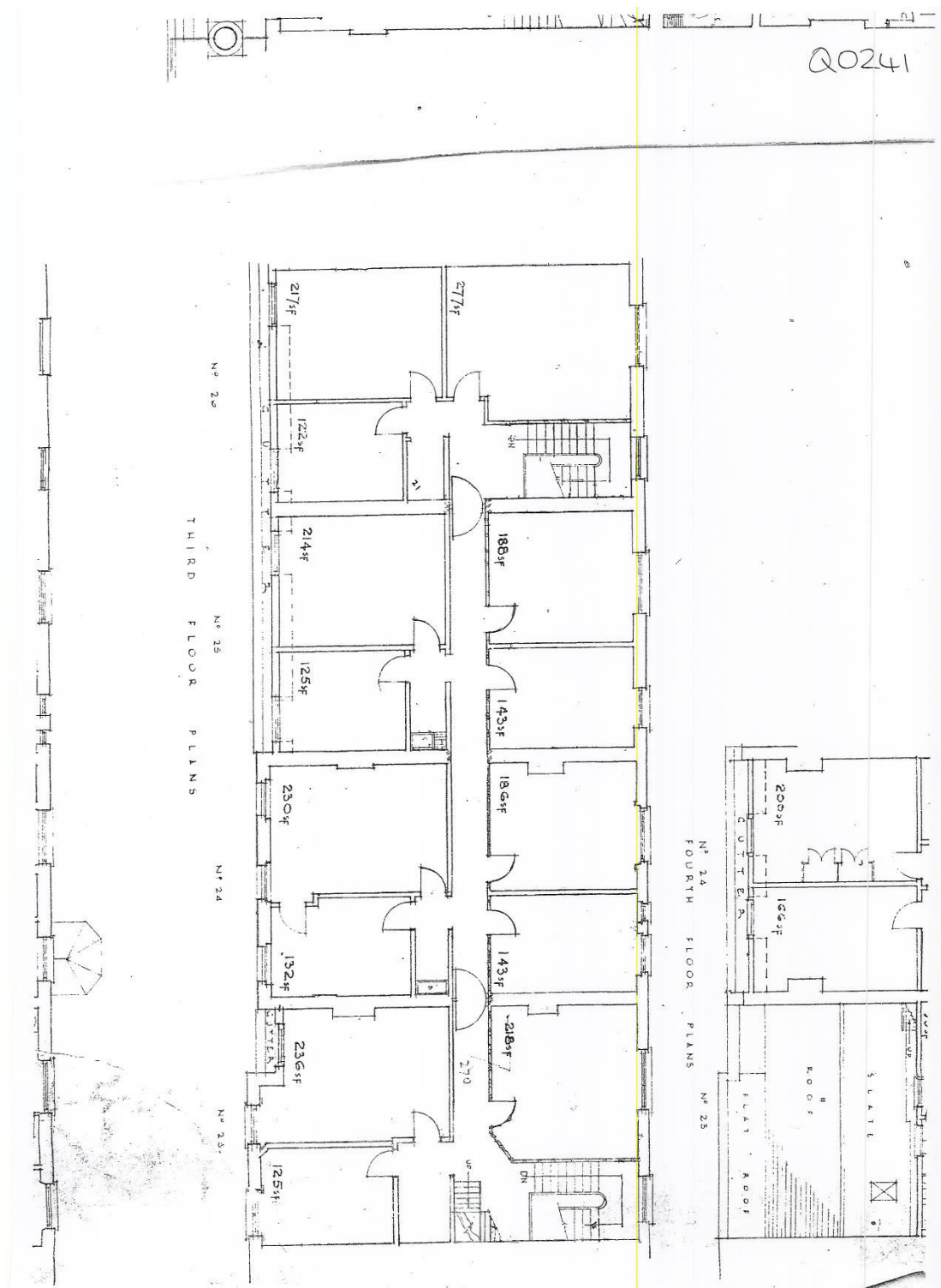


Fig 10 - Extract from Ministry of Works Plans April 1946 Third Floor Plans Nos: 26 – 23 Chester Terrace – The Crown Estate Archives

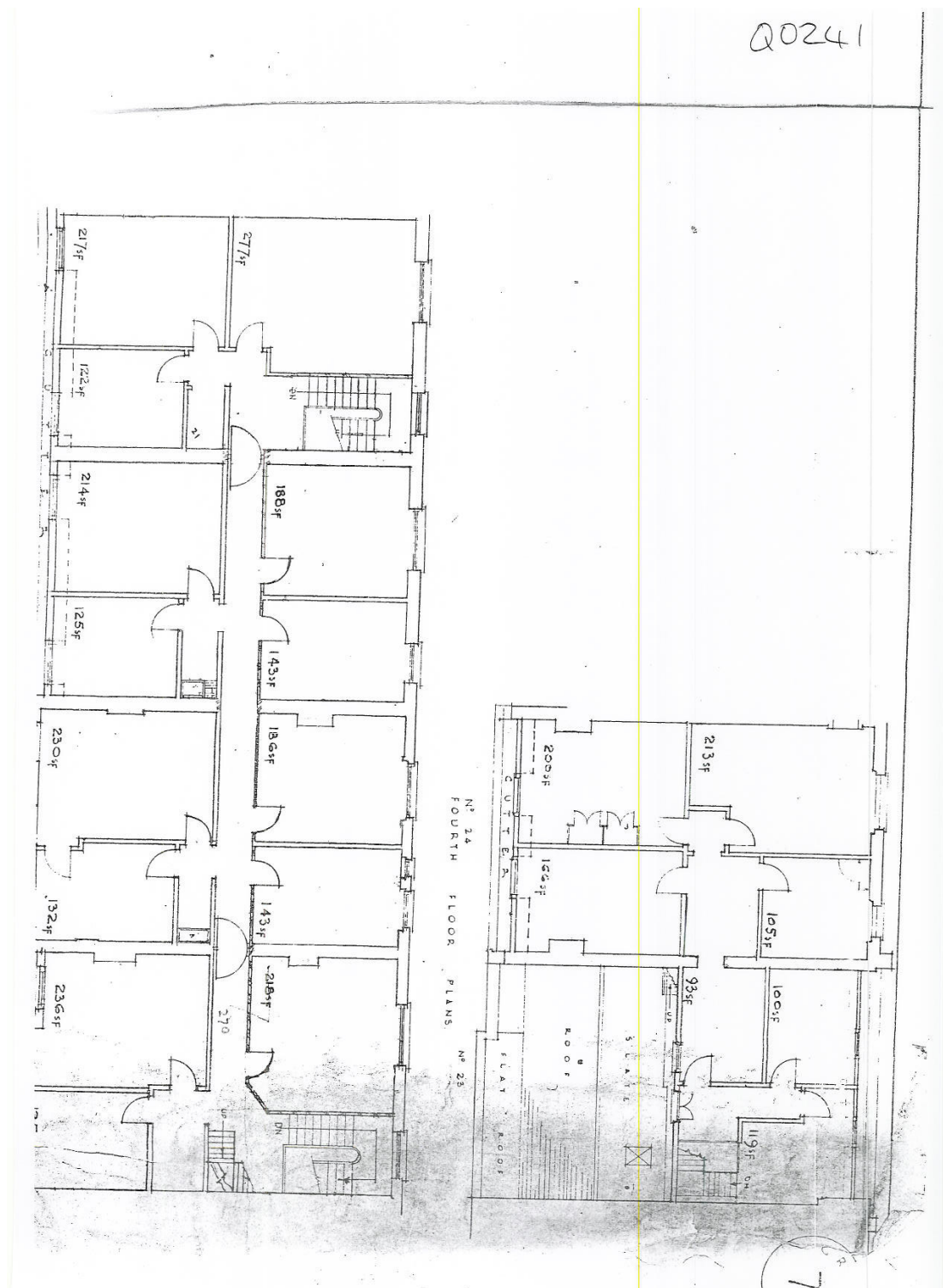


Fig 11 - Extract from Ministry of Works Plans April 1946 Fourth Floor Plans Nos: 24 – 23 Chester Terrace – The Crown Estate Archives