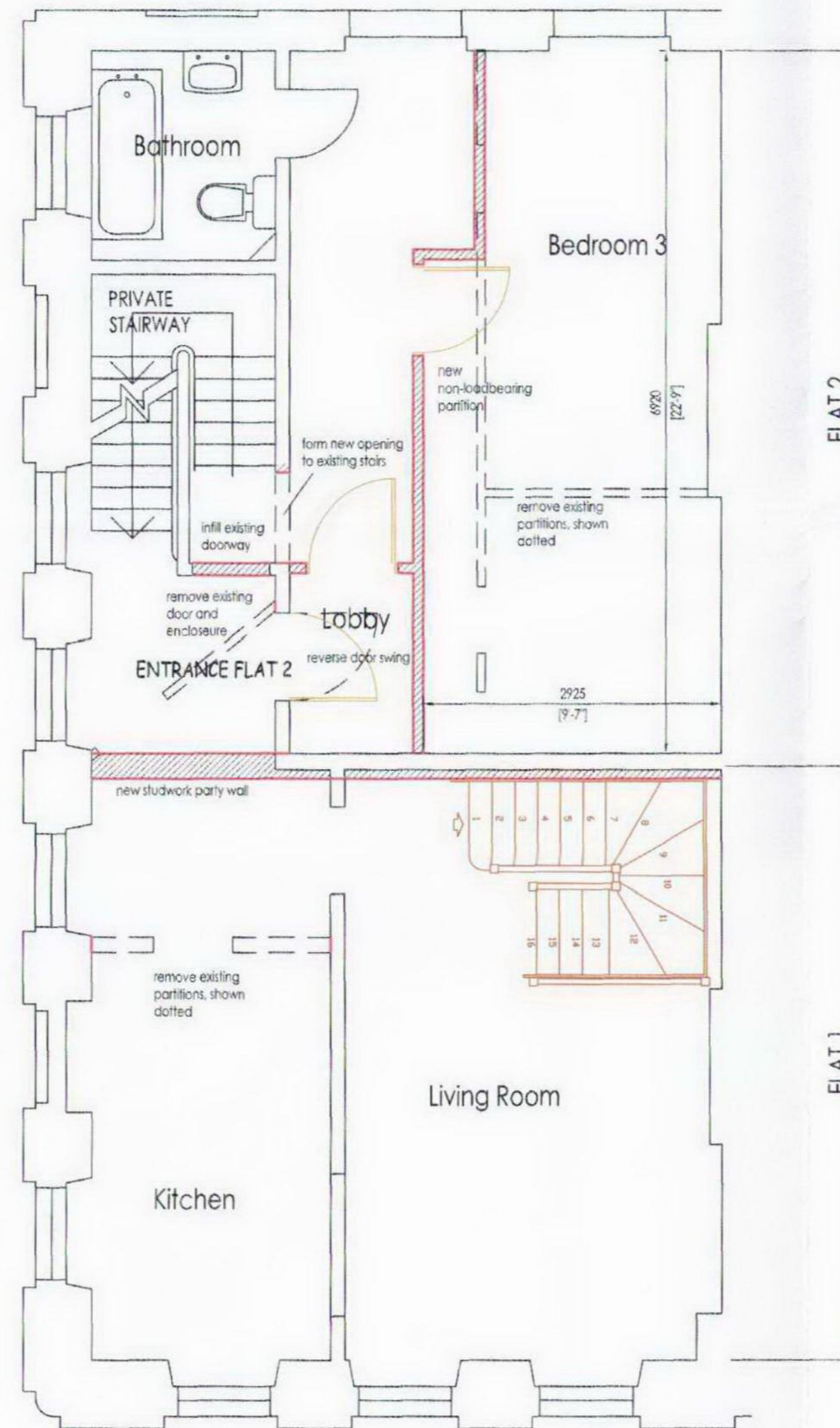
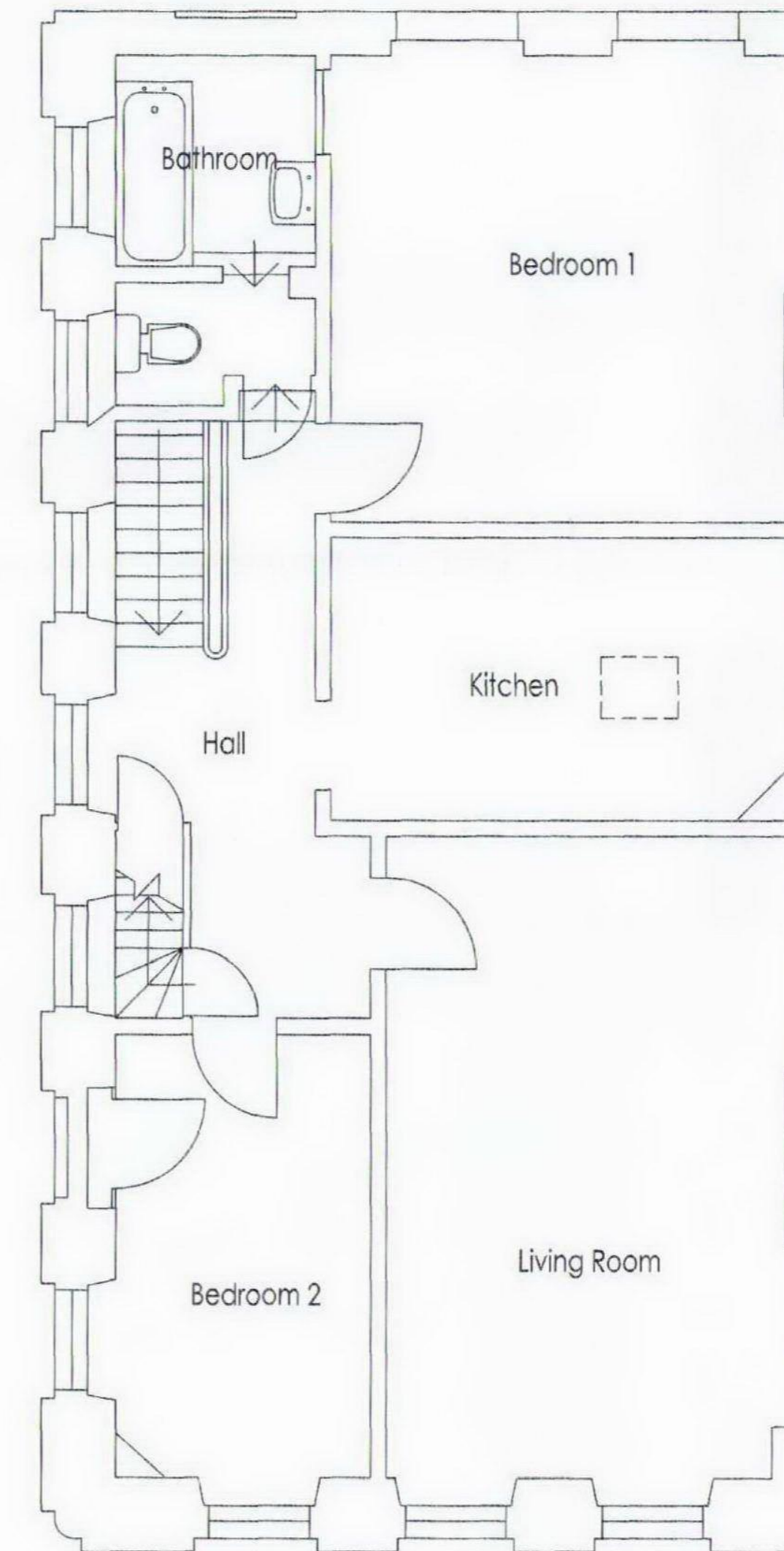


FIRST FLOOR PLAN - FLAT 1



SECOND FLOOR PLAN - FLAT 1 (FRONT), FLAT 2 (REAR)



THIRD FLOOR PLAN - FLAT 2


Whymark & Moulton
 Chartered Surveyors & Building Engineers
 20 North Street, Sudbury, Suffolk, CO10 1RB
 Tel: 01787 371371 Fax: 01787 319966

Project **38 Great Russell Street London WC1B 3PP**
 proposed First, Second and Third Floor Plans
 Scale **1:50** Date **Oct 2009**
 Drawing No **09/094- 03**

Amendments