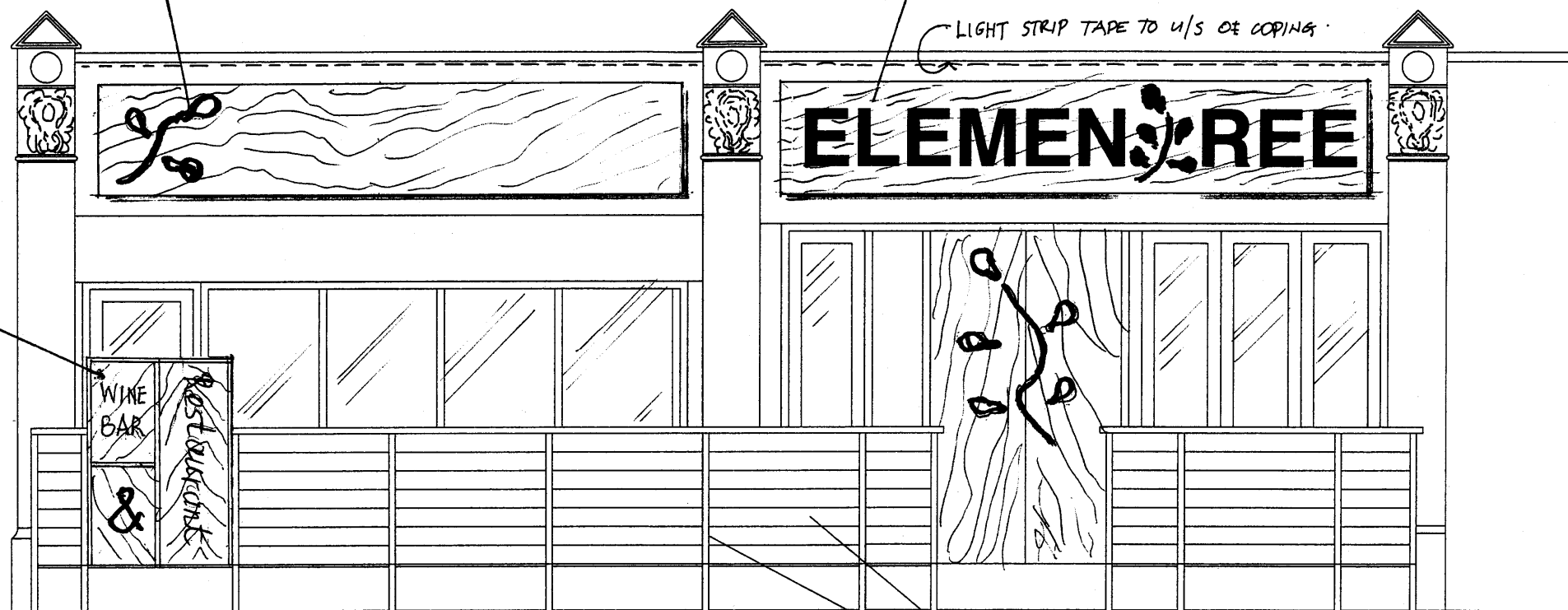


Basic graphic "tree" pattern
cut-out in relief
into hw fascia panel

Stained hw architectural Ariel Bold letters
45 mm thick fixed to hw fascia panel with
stainless steel concealed spacers 10 mm
proud of fascia. Sign soft wash illuminated
with LV light tape fixed to u/s of
existing projection facade coping.

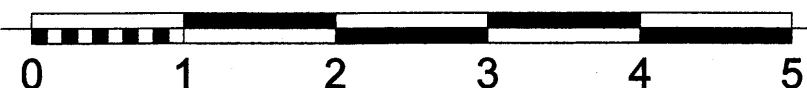
LIGHT STRIP TAPE TO U/S OF COPING



1700 mm high from floor decking
by 1200 mm wide by 140 mm thick
hw box sign with cut-out letters
in mixed helvetica/medieval floral script
back lit illumination with energy saving
fluorescent lamp.

Front Elevation of timber panel enclosure

hw posts and t/g boards
stained natural finish



Architect:
P W Lee and Associates
13 Langton Place
London SW18 5AZ
T: 020 8870 2261

Project title:
**108 - 110 Cricklewood
Broadway
London NW2 3EJ**

**Ground Floor Restaurant
Change of Use of No. 110
from A1 to A3**

**Alterations of shopfronts
of No. 108 and 110**

**Enclosure of Front Areas
of No. 108 and 110.**

Drawing title:
**Proposed Front
Enclosure Elevation &
Shop Signage**

Scale: 1:50 @ A3
Date: 29/09/2009

Drg No. **J380/04**