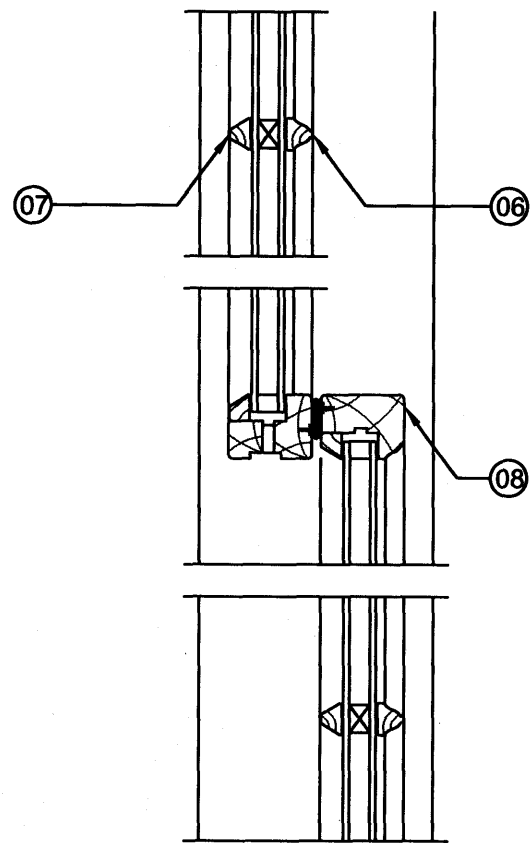
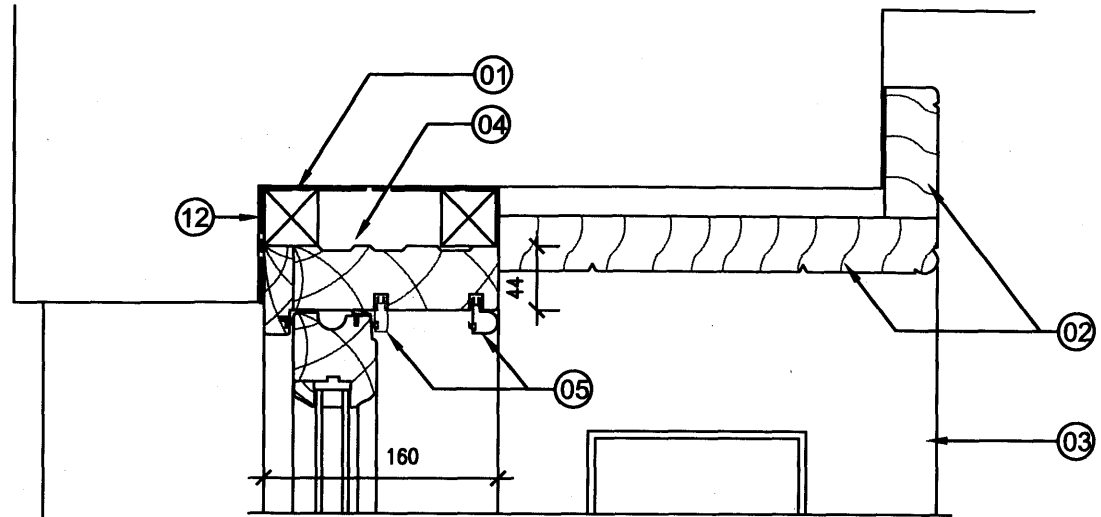


HEAD

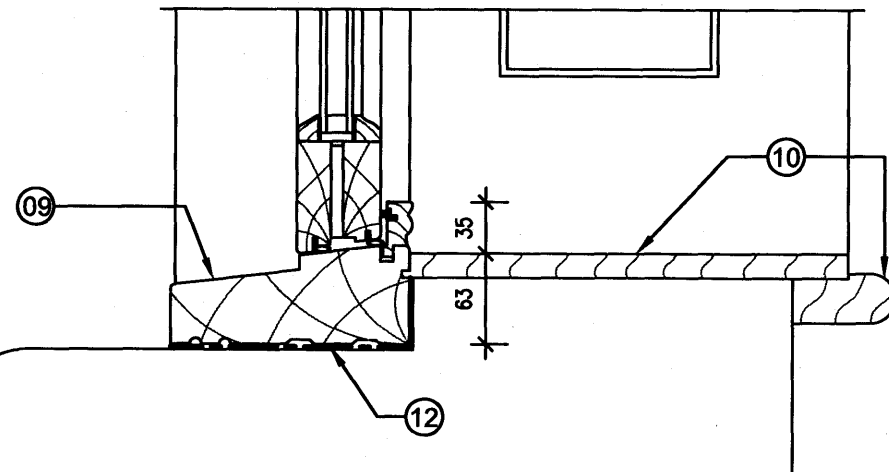


Mumford & Wood Conservation Sash
 Made to measure to fit extg opening
 (as checked on site prior to order)

Framing, sash stiles and rails are laminated
 knot-free Larch or solid Douglas Fir.

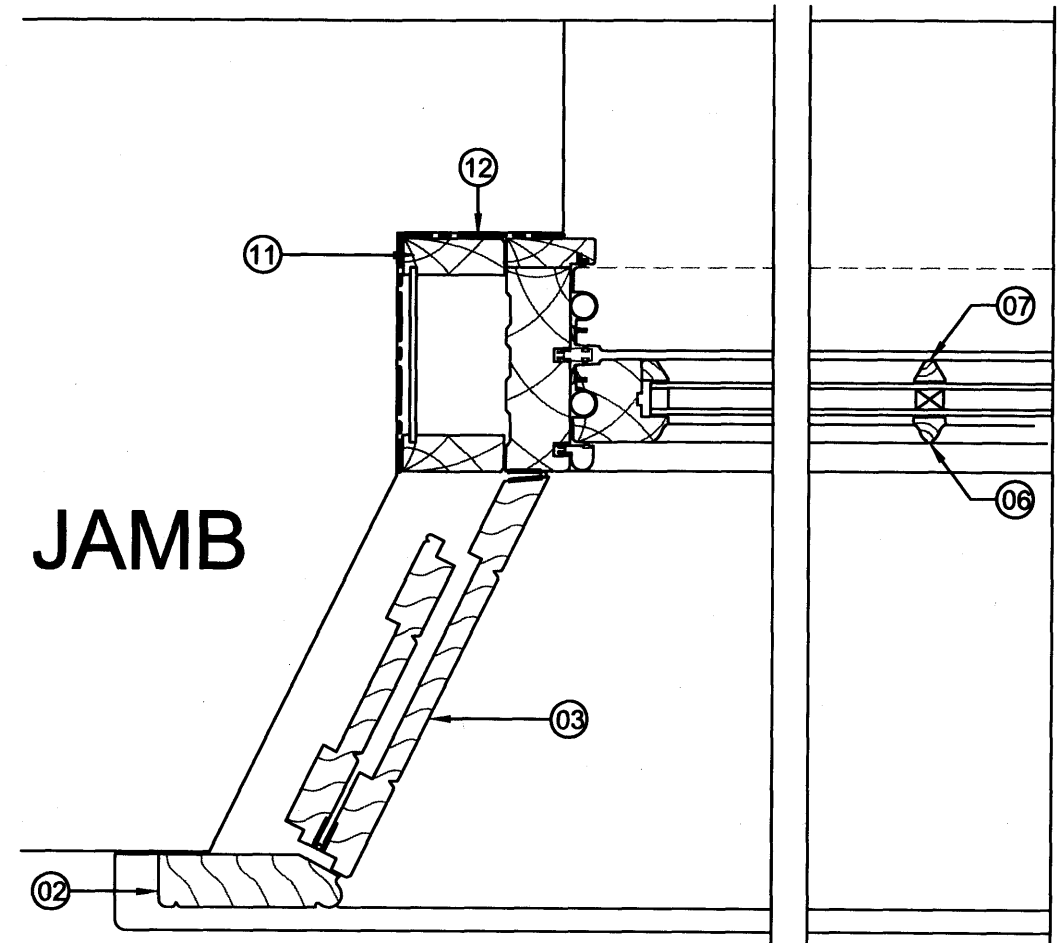
factory finish: 3 coats white paint
 factory double glazed units
 Low 'E' clear annealed glass

Heavy duty pre-tensioned spiral spring
 balances



CILL

JAMB



- ① framing as necessary to support head
- ② existing internal linings retained
- ③ existing internal shutters refurbished
trim outer shutter widths if necessary to fit new 160mm wide sash frame (original sash frame 153mm wide)
- ④ 44mm deep head section with plain square liner
- ⑤ Sashglide 'Click Fit' staff and parting beads
- ⑥ 22mm wide lambs tongue moulded glazing bar (hardwood)
- ⑦ hardwood external glazing bar with putty line profile
- ⑧ meeting rails ⑨ flush hardwood cill
- ⑩ new window board and moulding
- ⑪ new lining to old sash pocket
- ⑫ dpc

RECEIVED
26 OCT 2009

<p>DO NOT SCALE OFF THIS DRAWING. ALL DIMENSIONS MUST BE CHECKED ON SITE PRIOR TO ANY WORK BEING PUT IN HAND. ANY DISCREPANCIES ARE TO BE BROUGHT TO THE ATTENTION OF THE PROJECT MANAGER IMMEDIATELY UPON DISCOVERY.</p>	Project Officer: R. Clements Tel: 020 7679 1271 Fax: 020 7813 0524 Email: r.clements@ucl.ac.uk	029/04 22 Gordon Square Lower Ground Floor Refurbishment	
	Drawn: RC Date: Oct 09 Scale: 1:5 @ A3	Windows W11 & 12 As Proposed (1:5)	DWG. NO. AA(31)13