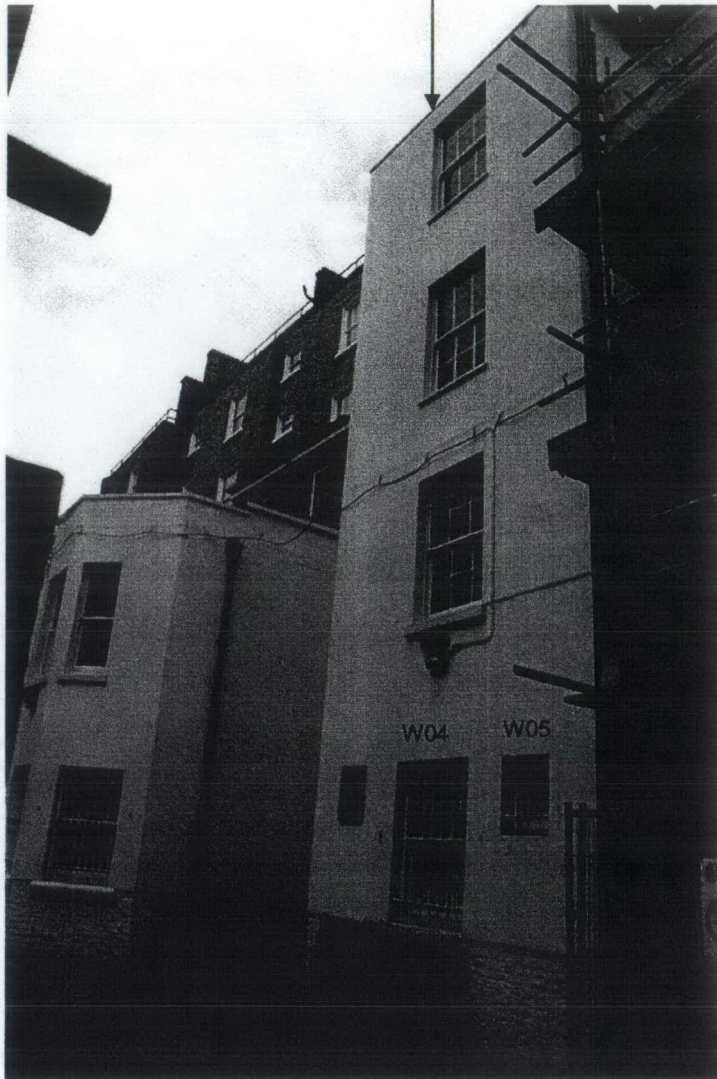


**Planning & Listed Building Consent Application**  
**Annotated Photographs Document**  
22 Gordon Square, Internal Refurbishment

22 Gordon Square



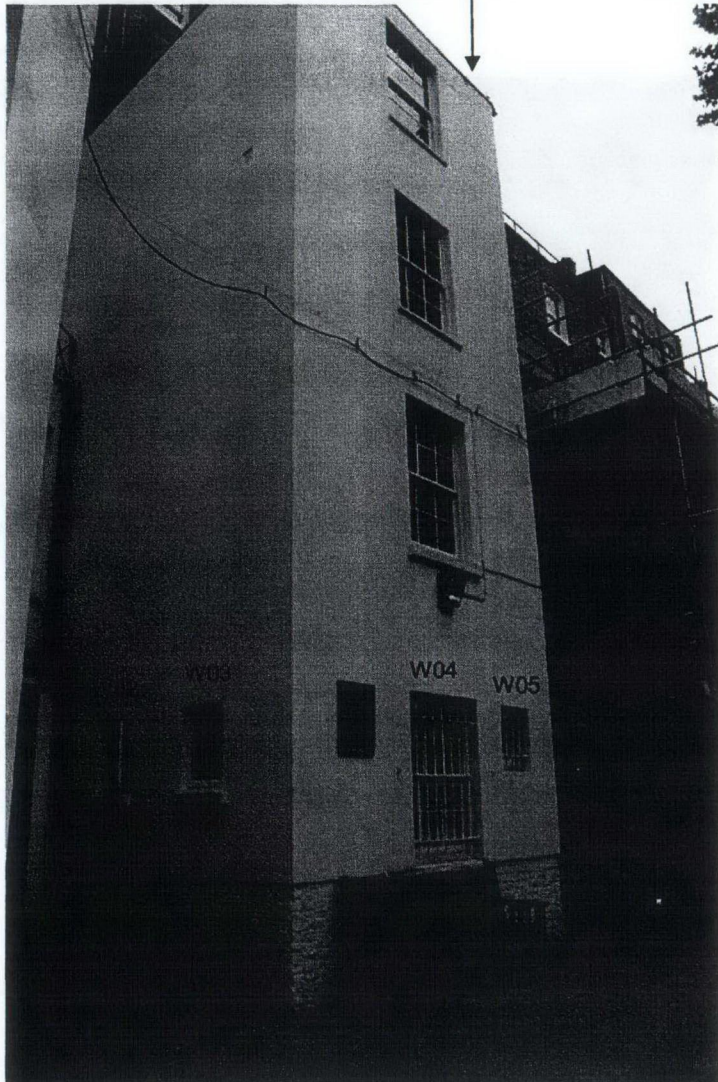
Proposals are confined to the Lower Ground Floor.

W04 & W05 to be replaced.

Rear Elevation looking North West

**Planning & Listed Building Consent Application**  
**Annotated Photographs Document**  
22 Gordon Square, Internal Refurbishment

22 Gordon Square



Rear Elevation looking East

Proposals are confined to the Lower Ground Floor.

W03, W04 & W05 to be replaced.

W02 to be removed and infill opening.

**Planning & Listed Building Consent Application**  
**Annotated Photographs Document**  
22 Gordon Square, Internal Refurbishment

W04, W05, W06, W07 & ED01 to be replaced.

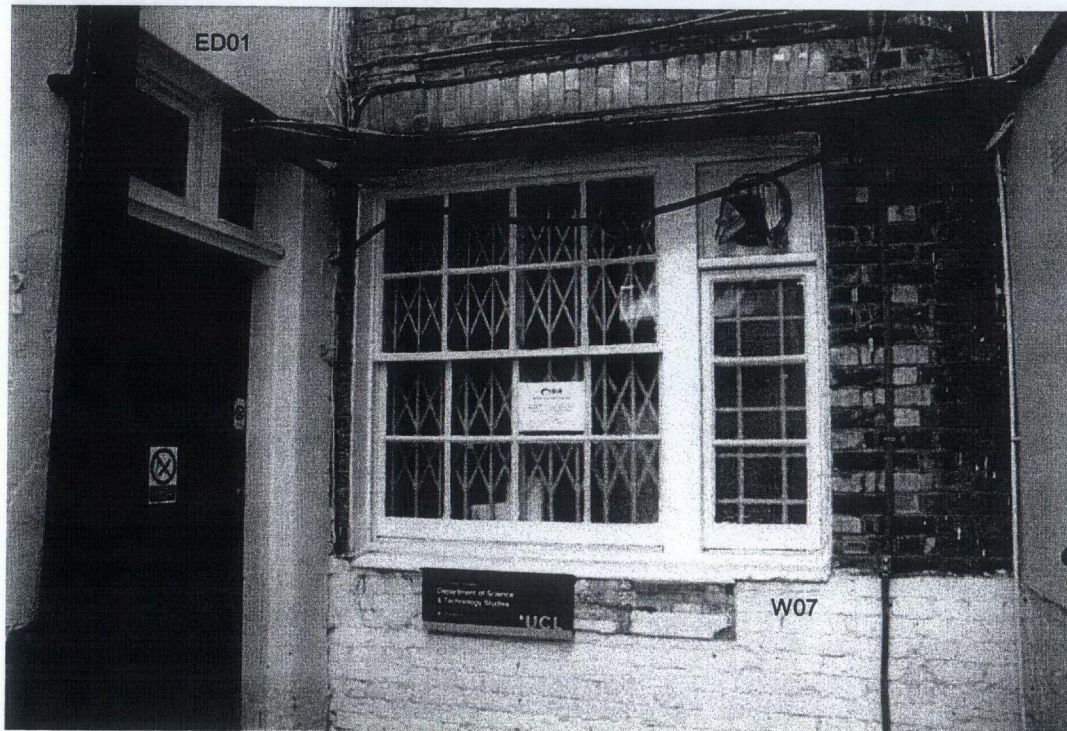


← W07

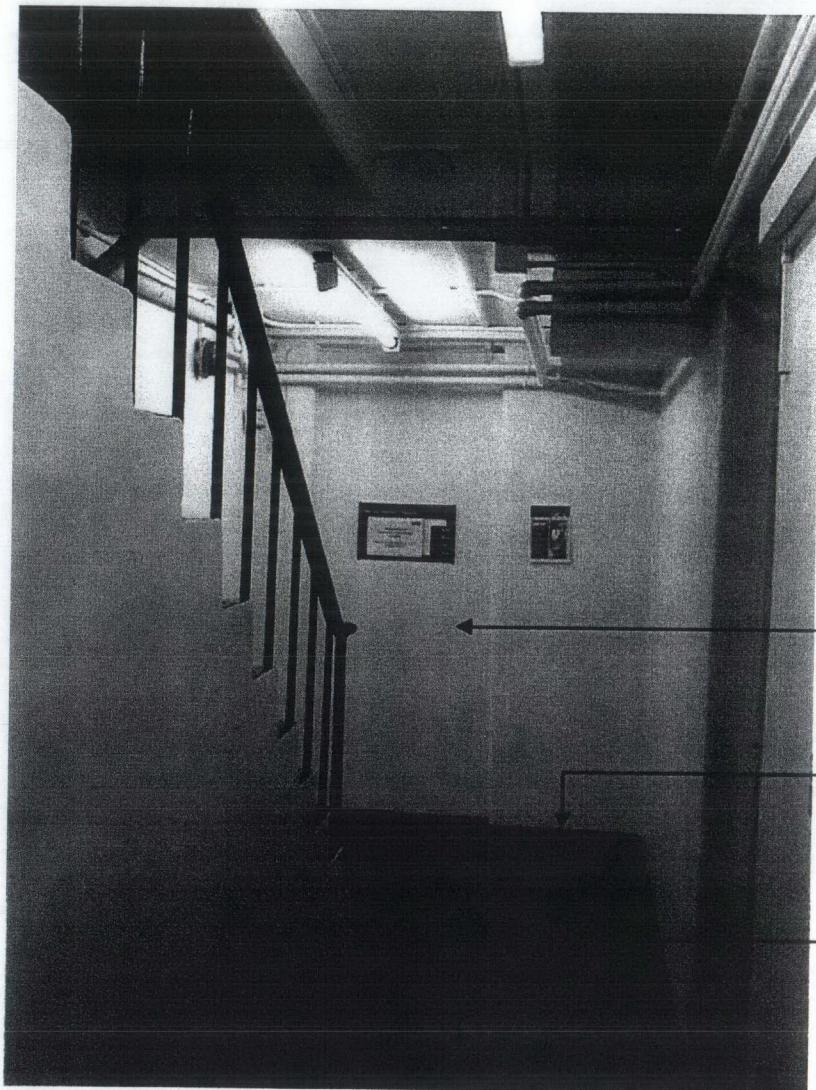
— Paving to be replaced  
with "accessible" paving  
- see proposed plans

Rear Extension

ED01 & W07 to be replaced (see elevations).  
Redundant services will be removed but 'live'  
ones on the horizontal tray have to be retained.



Rear Entrance / Exit Door



Stair baluster will be retained and redecorated.

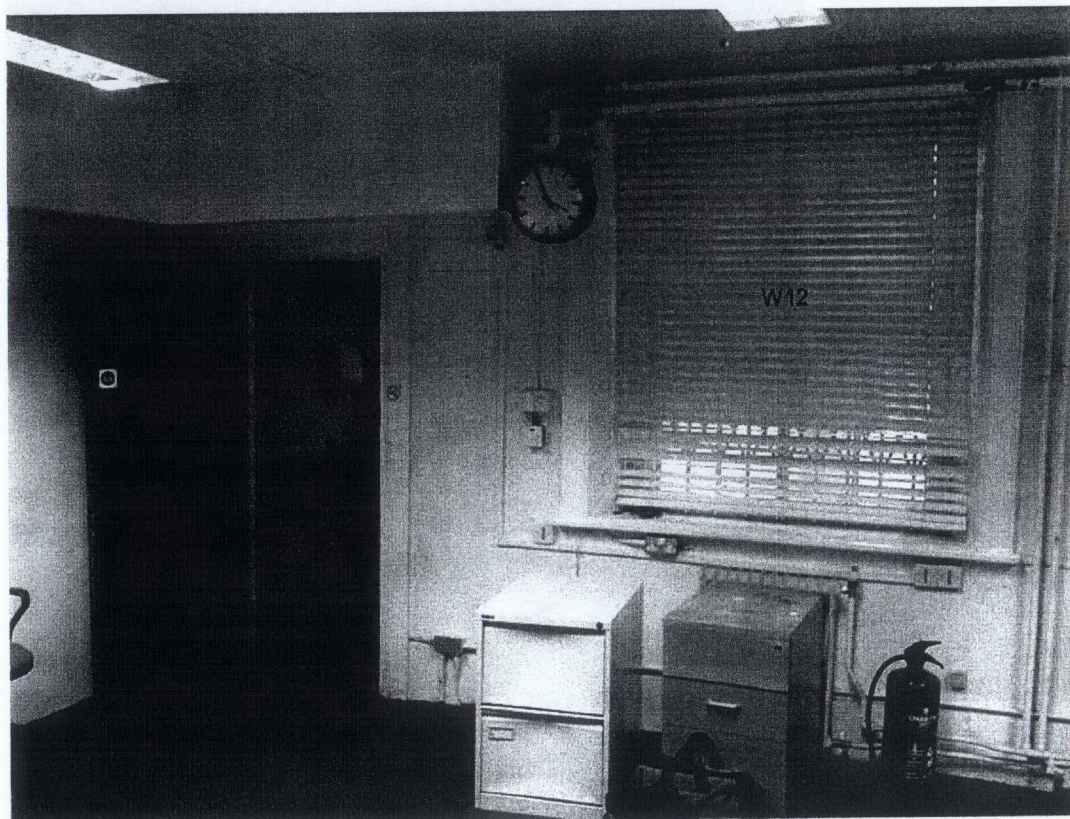
Former door opening  
to be opened up.

"Painted-on" skirtings  
to be retained and  
redecorated.

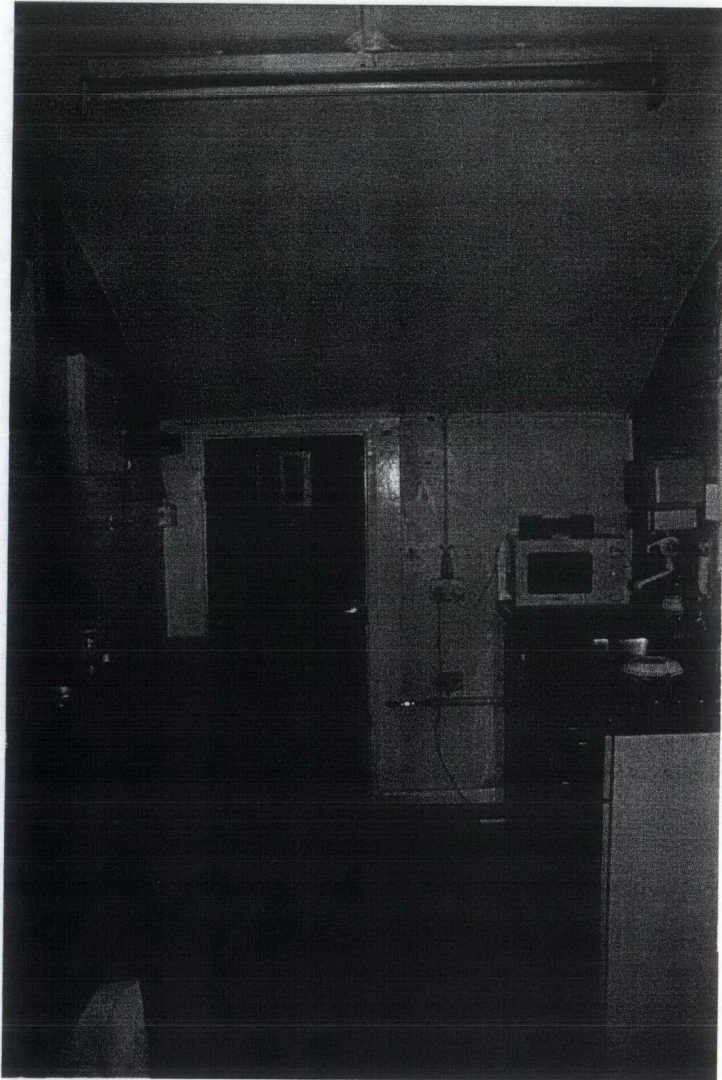
Floor finish to be  
replaced.

Hallway / Stairs

Interiors are shabby and in need of full refurbishment.



B15 Interior



B16 Interior

Interiors are shabby and in need of full refurbishment.