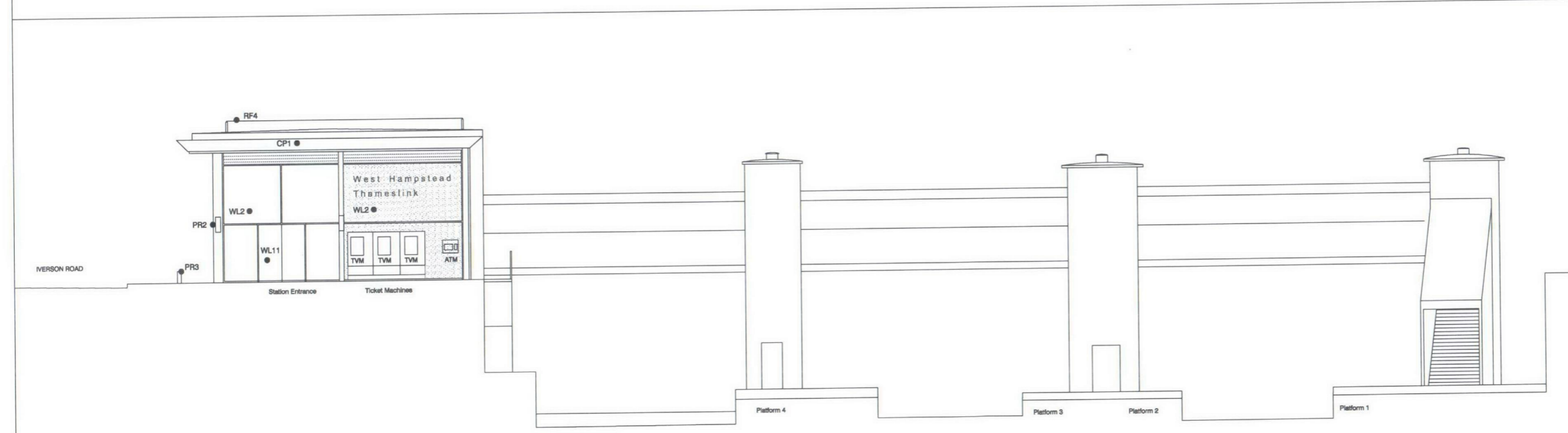




Long (South) Elevation on Iverson Road



East Elevation

SPECIFICATION NOTES

- FL1 CONOURSE FLOORING
- existing LBC Pavement
 - FL2 EDGING & TRIMS
- existing LBC Kerb edge
 - FL3 RETAIL SURFACING
- screeded concrete floor - tenant fit-out
 - FL4 CONOURSE AREA SURFACING
- Waxman Ceramic Iestone Gris (60 SRV DRY, 50 SRV WET)
- 450x450 Ceramic Floor Tiles
 - FL5 STAFF SUITES SURFACING
- rubber wearing surface on slab
(note: ceramic tiles in lieu of rubber in wet areas [mess,WC])
 - FL6 PLANT SPACE SURFACING
- painted concrete, dust retardant
 - FL7 EXTERNAL PAVING
- york stone paving
 - FL8 EXTERNAL PAVING
- granite kurb stone
 - WL1 CONOURSE WALL SURFACING
- fully glazed in metal framing - back painted glass
 - WL2 EXTERNAL WALL CLADDING
- double glazed,aluminium framed glazing system
 - WL3 EXTERNAL WALL SURFACING
- sawtooth profile engineering brick with offset coursing
and glazed visible surface
 - WL4 EXTERNAL WALL SURFACING
- zinc panel cladding
 - WL5 STAFF SUITES WALL SURFACE
- painted hardwall plaster in blockwork partitions
(note: ceramic tiles in wet area)
 - WL6 CONOURSE WALL SURFACING
- glazed, profile brick cladding
 - WL7 EXTERNAL WALL SURFACING
- louver metal panels
 - WL8 EXTERNAL WALL SURFACING
- engineering brick wall
 - WL9 ALLUMINIUM FRAMED, POWDER COATED INWARD
OPENING WINDOW WITH ALUMINIUM LOUVRE SCREEN TO
EXTERNAL FACE
 - WL10 ENGINEERING BRICK SCREEN WALL TO
VODAFONE / PLANT AREA
 - WL11 SLIDING, GLAZED, POWER DRIVEN ENTRANCE DOORS
WITH DDA OPENING POINT
 - WL12 PAINTED STEEL GATE
 - SF1 CONOURSE CEILING
- painted metal ceiling panels
 - SF2 RETAIL CEILING
- exposed slab with capped services - tenant fit-out
 - SF3 ENTRANCE AREA CEILING
- painted metal panels
 - SF4 STAFF SUITES CEILING
- perforated metal suspended ceiling tiles with integrated
lighting / supply / extract
 - SF5 PLANT ROOM CEILING
- exposed ceiling
 - SF6 CANOPY SOFFIT
- ceramic cladding panels
 - RF1 STATION ROOFING
- membrane roofing with sedum overlay
 - RF2 STATION ROOFING
- roof access hatch for maintenance
 - RF3 MEMBRANE LINED GUTTER
- to incorporate access grille walkway and mansafe system
 - RF4 LANYARD MANSAFE FALL ARREST SYSTEM IN BOARD
OF ROOF PERIMETER
 - CP1 CONOURSE CANOPY
- zinc panel cladding on 2° slope
- 45° trim edge profiles
 - PR 1 INTERNAL STATION LIGHTING
Zumtobel, VAERO-S pendant luminaire
 - PR2 EXTERNAL STATION LIGHTING
Zumtobel, BEGA / LUM 850 +218
 - PR3 CAST IRON ANTI-COLLISION BOLLARDS
 - PR4 PAINTED STEEL (STAIR/HANDRAIL)
- SPECIFICATION NOTES PREFIX KEY:
- FL = flooring
 - WL = wall
 - SF = soffit
 - CP = canopy construction
 - RF = roofing
 - PR = product description

