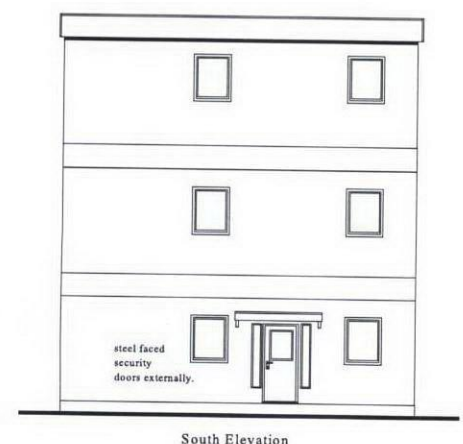
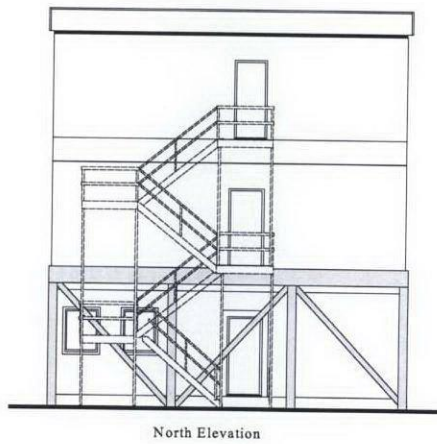
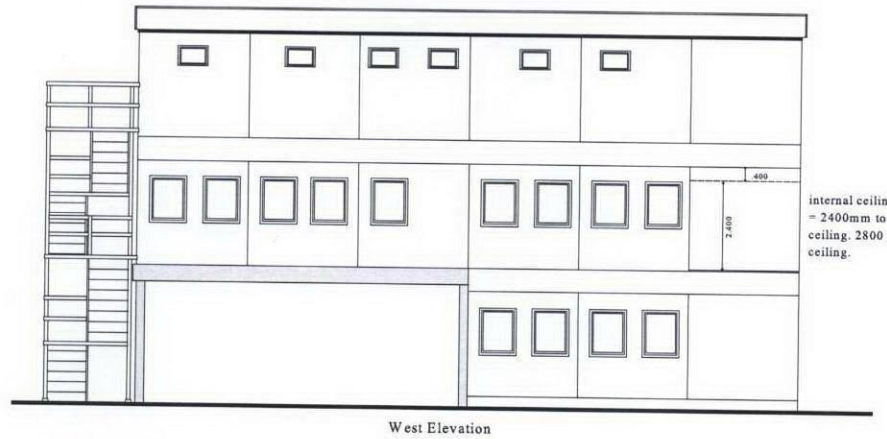
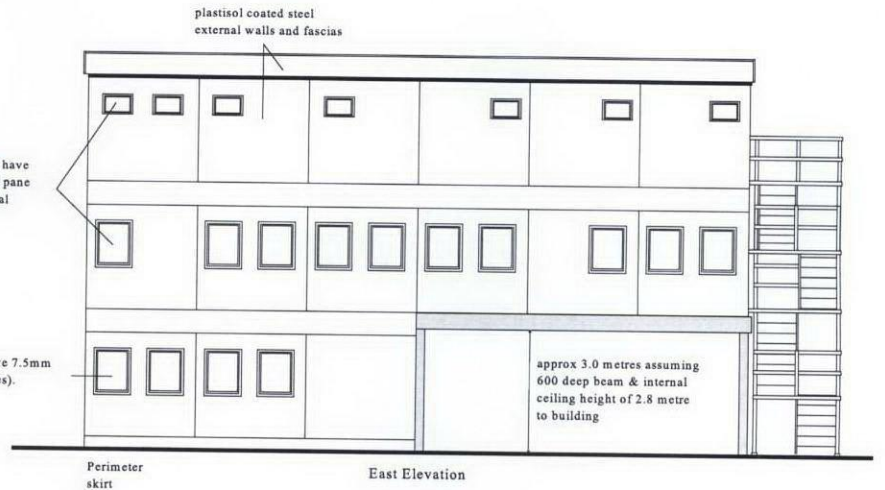




first and second floor windows to have 7.5mm laminated glazing internal pane & 6mm toughened glazing external pane.

ground floor windows to have 7.5mm laminated glazing (both panes).



internal ceiling height = 2400mm to suspended ceiling. 2800 to solid ceiling.

**General Details**

Plastisol coated steel external finish externally to preferred colour scheme applied to 9mm external grade ply. Insulation to walls, floor & roof void, in accordance with L2 requirements 2002. Hypalon high performance roof covering - FAA rated. Mechanical extraction to all w.c. & showers areas at the rate of 10 air changes per hour - all light switches activated and c/w 15 min overrun. Power via 13 amp twin switched sockets set in 3 compartment dado trunking to areas indicated, wall mounted with concealed wiring within the walls to remaining areas. Water heating via under sink electric water heaters. Emergency lighting system to BS5266 part 1 1988. Door signage to BS 5409 part 1

**Internal Staircase** (in accordance with approved doc M 1/M 2 2002) uniform risers @ max 170mm going flights @ min 270mm x 1000mm unobstructed width. 3 mid landings 2900 x 1000mm. Continuous handrail on both sides of flights and landings, handrail to extend min 300mm from edge of top and bottom flight. Top of handrails to be 900mm above the flight of steps, and 1000mm above the surface of the landings. All step nosings to have contrasting brightness.

**Internal Linings & Fire Ratings**

All linings to internal walls, ceilings to provide elements of construction with 60 minute fire resistance. Linings to be formed from 15mm vinyl faced 'Fireshield' boarding having 9mm plywood backing to all walls and partitions.

**Suspended Ceiling**

Suspended ceiling system formed from 600 x 600 grid with fibrous ceiling tiles (class 0 spread of flame), to be installed to all areas with the exception of the Stairwell, Cleaner Room, Shower Room, Dry Area, Disabled w.c., these areas to have 15mm vinyl faced 'Fireshield' boarding to match internal walls.

**Water Heaters**

All water heaters to be from the Santon Aqualine range. All are under sink fitted and fitted with a Thermostatic Blending Valve to allow setting of water heat to preferred temperature.

**Windows**

All upvc double glazed units c/w trickle vents - min 4000mm<sup>2</sup> per window. Full windows 914w x 1100 deep bottom opening c/w vents, 100mm restrictor stays and lockable handles. High level windows 600w x 300d, fully opening. U Value = 1.8W/m<sup>2</sup>K

**Lighting**

Formed from recessed 600 x 600 and 1200 x 600 modular light fittings set within the suspended ceiling system. All lighting to be high frequency. LG3 lighting to all offices areas, sealed non corrosive lighting to wet areas, standard lighting with perspex diffusers to remaining areas.

Lighting to achieve the following Lux levels;

To all Offices/Parade area/Interview Room etc - 300 lux  
To corridors, canteen, w.c.'s, locker room etc - 150 lux

**Heating (space heating)**

Areas not receiving air conditioning (w.c.'s, showers, courtesy rooms, dry area, cleaners, stairwell and corridors) to be heated via either 2kw electric convactor heaters, high level fan heaters and tubular heaters, all thermostatically controlled.

**Panic Alarms**

Plunge type panic alarm to front counter, strip type panic alarm to interview room. Sounders for both to be located in ground floor corridor and first floor Parade area. Panic alarm to ground floor disabled w.c. to have contrasting sound with sounder located in Front Counter area.

**Colour Schemes**

External walls/fascias - Ocean/Pacific Blue  
Internal walls - Cream  
Internal ceilings - White  
Internal doors - Sapele (woodgrain)  
Door furniture - Coloured nylon coated

**Flooring**

Vinyl : Polyfloor Polysafe 3.5mm  
Colour : Cedar Blue  
Locations : Lobby & 1/2 interview room

Vinyl : Polyfloor Polysafe 2.5mm  
Colour : Cedar Blue  
Locations : All second floor, disabled w.c. 1/2 of canteen, below sink in Admin

Carpet : Hi Tech Carpet Tiles  
Colour : Skycap Blue  
Locations : All remaining areas

Sit on coved pvc skirtings to all wet areas, locker room, w.c.'s, canteen, lobby and interview area. Stained softwood timber skirting to remaining areas.

N.B Internal stair edgings to be high visible yellow pvc hazard warning inserts.

**External doors & doors marked \***

All these doors to be steel faced security doors set in a 1.6mm pre-galvanised steel doors frame. All leafs firmly fixed to the frame by 3 class 8 stainless steel butt hinges with integral 'Dag-Bolt' to resist forced entry. Entrance door to Lobby to have toughened glazed vision panel, an ERA Pro-Fit Euro-Profile mortice lock and hardened steel deadbolts to the top and bottom. Internal doors to and from the lobby to have pull handle/push pad only, installation of security swipe card locking system by others. Glazing to be 7.5mm laminated glass

**Internal Doors (all sapele faced)**

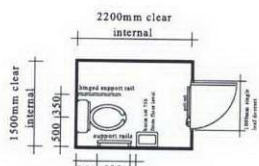
838w - 838mm wide door (min 800 clear opening)  
914w - 1000mm door set (min 914 opening)  
Door furniture to contrast visually with doors.  
Door framed/casings to contrast visually with the surrounding walls.  
All internal doors to be 1/2 hr fire check & c/w smoke seals, all doors to exits to have either no or only one simple fastening which operates without the use of a key.  
All doors c/w kick plates.  
Door signage to BS 5409 Part 1

**Air Conditioning System**

System to be formed from a 'Heat Recovery System' providing controlled comfort heating and cooling to the following rooms;

- Lobby - via high level wall mounted unit
- Interview Room - via cassette
- Admin & Filing - via cassette
- Sergeants - via high level wall mounted unit
- Post & Writing - via cassette
- Parade Area - via cassette
- Inspectors Office - via cassette
- District Office - via high level wall mounted unit
- Store Room - via cassette
- Server Room - via Separate split system with own external condenser
- Mixed Locker Room - via cassette
- Canteen - via cassette
- Quiet Room - via high level wall mounted unit
- Coroner's Office - via wall mounted unit
- Enquiries Office - via wall mounted unit

All ducting etc to be concealed within the suspended ceiling void, cassettes mounted within the suspended ceiling grid, wall mounted wall units fixed at high level on external walls/partitions below the suspended ceiling system. All units fed via 2 outdoor combination condensing units mounted at ground level adjacent to the building (position t.b.a). All rooms fed via the system to have a wall mounted control panel.



Floor plan detail of disabled W.C. to part M regulations

- = wash hand basin set in vanity unit c/w undersink water heater
- = W.c suite c/w cistern and pvc seat
- = Urinal c/w auto cistern
- = 1500mm fluorescent light fitting c/w perspex diffuser
- = 1100 X 914 upvc framed opening window
- = 600 X 300 full opening window obscure glazed
- d.c = door closer
- v.p = vision panel
- fc30 = 30 minute fire check door
- = 13 amp twin switched socket outlet
- = 2 kw thermostatically controlled convactor heater c/w fused spur
- = 1 kw high level fan heater
- = Tubular heater c/w guard
- = non maintained illuminated exit sign

U Values - Walls = 0.35W/m<sup>2</sup>  
Floor = 0.25W/m<sup>2</sup>  
Roof = 0.25W/m<sup>2</sup> } In accordance with L2 requirements 2002

Client Approval	
Name	
On behalf of	
Signed	
Date	

Preliminary Proposal for New Two Storey Modular Offices for BTP @ CTW Kings Cross Site.  
22.11.05  
c/jf/ctw.btp/0511-1  
Scale 1:100 (A1 Print)  
Revision A 24.11.05 - Increase to 3 storeys  
Revision B 28.11.05 - Lounge Removed  
Revision C 1.12.05 - Internal alterations  
Revision D 8.12.05 - Modification to showers  
Revision E 13.12.05 - Building Inverted  
Revision F 16.12.05 - Internal Modifications  
Revision G 5.1.06 - Per Comments from BTP(email)  
Revision H 16.1.06 - 2 windows relocated