

General Details

Plastisol coated steel external finish externally to preferred colour scheme applied to 9mm external grade ply.
 Insulation to walls, floor & roof void, in accordance with L2 requirements 2002
 Hypalon high performance roof covering - FAA rated.
 Mechanical extraction to w.c. & baby change areas at the rate of 10 air changes per hour - all light switch activated and c/w 15 min overrun.
 Power via 13 amp twin switched
 Water heating via under sink electric water heaters.
 Emergency lighting system to BS5266 part 1 1988.
 Door signage to BS 5409:part 1

Internal Linings & Fire Ratings
 All linings to internal walls, ceilings to provide elements of construction with 60 minute fire resistance. Linings to be formed from 15mm vinyl faced 'Fireshield' boarding.

Suspended Ceiling
 Suspended ceiling system formed from 600 x 600 grid with fissured ceiling tiles (class 0 spread of flame), to be installed to all areas.

Water Heaters
 All water heaters to be from the Santon Aqualine range. All are under sink fitted and fitted with a Thermostatic Blending Valve to allow setting of water heat to preferred temperature.

Windows
 All upvc double glazed units.
 Full windows 1200 wide x 1800 deep sealed units.
 Outer pane = 4mm tinted laminated Pilkinton float glass
 Spacer Bar = profil 15.5mm anodised
 Inner pane = 4mm clear laminated Pilkington K float glass
 U Value = 1.8W/m2K

Lighting
 Formed from recessed 600 x 600 and 1200 x 600 modular light fittings set within the suspended ceiling system. All lighting to be high frequency fittings c/w perspex diffusers.

Lighting to achieve the following Lux levels;
 To Lounge area - 300 lux
 To w.c. & Baby change area - 150 lux

Heating (space heating)
 Areas not receiving air conditioning (w.c.'s, & baby change areas) to be heated via either tubular heaters c/w guards.

Colour Schemes
 External walls/fascia's - Pigeon Grey
 Internal walls - Cream
 Internal ceilings - White
 Internal doors - Sapele (Beech)
 Door furniture - Coloured nylon coated

Flooring
 Vinyl : Polyfloor Polysafe 2.5mm
 Colour : Cedar Blue
 Locations : Disabled W.C and Baby Change
 Carpet : Hi Tech Carpet Tiles
 Colour : Skycap Blue
 Locations : Lounge

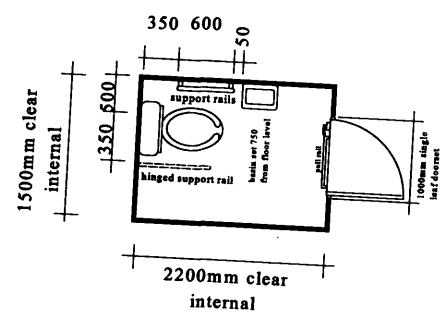
Sit on coved pvc skirtings to all wet areas, locker room, w.c.'s, canteen, lobby and interview area.
 Beech softwood timber skirting to remaining areas.

Entrance door
 To comprise of automatic sliding door system, final details to be advised.

Internal Doors (all beech faced)
 914w = 1000mm door set (min 914 opening)
 Door furniture to contrast visually with doors.
 Door framed/casings to contrast visually with the surrounding walls.
 All internal doors to be 1/2 hr fire check & c/w smoke seals.
 All doors c/w kick plates.
 Door signage to BS 5409 Part 1

Air Conditioning System
 System to be formed from a comfort heat /cooling system providing controlled comfort heating or cooling to the following areas;

Lounge Area wia cassettes
 All ducting etc to be concealed within the suspended ceiling void, cassettes mounted within the suspended ceiling grid.
 All units fed via 1 outdoor combination condensing units mounted at ground level adjacent to the building (position t.b.a).
 Air conditioning system to be controlled via a wall mounted control panel to be located in the Reception area.



Floor plan detail of disabled W.C to part M regulations.
 Disabled W.C to have emergency pull cord system, with audible and visual signal.

- = wash hand basin set in vanity unit c/w undersink water heater
- = W.c suite c/w cistern and pvc seat
- = 1200 x 600 recessed light c/w perspex diffuser
- = 600 x 600 recessed light c/w perspex diffuser
- d.c = door closer
- v.p = vision panel
- fc30 = 30 minute fire check door
- = 13 amp twin switched socket outlet
- = Tubular heater c/w guard
- = non maintained illuminated exit sign
- = non maintained emergency light

U Values - Walls = 0.35W/m2
 Floor = 0.25W/m2
 Roof = 0.25W/m2 } In accordance with L2 requirements 2002

Preliminary Outline Proposal for New Standard Class Lounge @ Kings Cross Station.
 cjf/scl/1205-1
 Scale 1:100 (A2 Print)

Revision A 18.12.05 - Various modifications
 Revision B 6.1.06 - Alteration to disabled w.c
 Revision C 16.1.06 - Modesty screens added

Client Approval	
Name	
On behalf of	
Signed	
Date	



Actacom Limited

Queens Buildings
 Lowlands Road
 Mirfield
 West Yorkshire WF14 8LX
 Tel(01924) - 498557 Fax (01924) - 499092