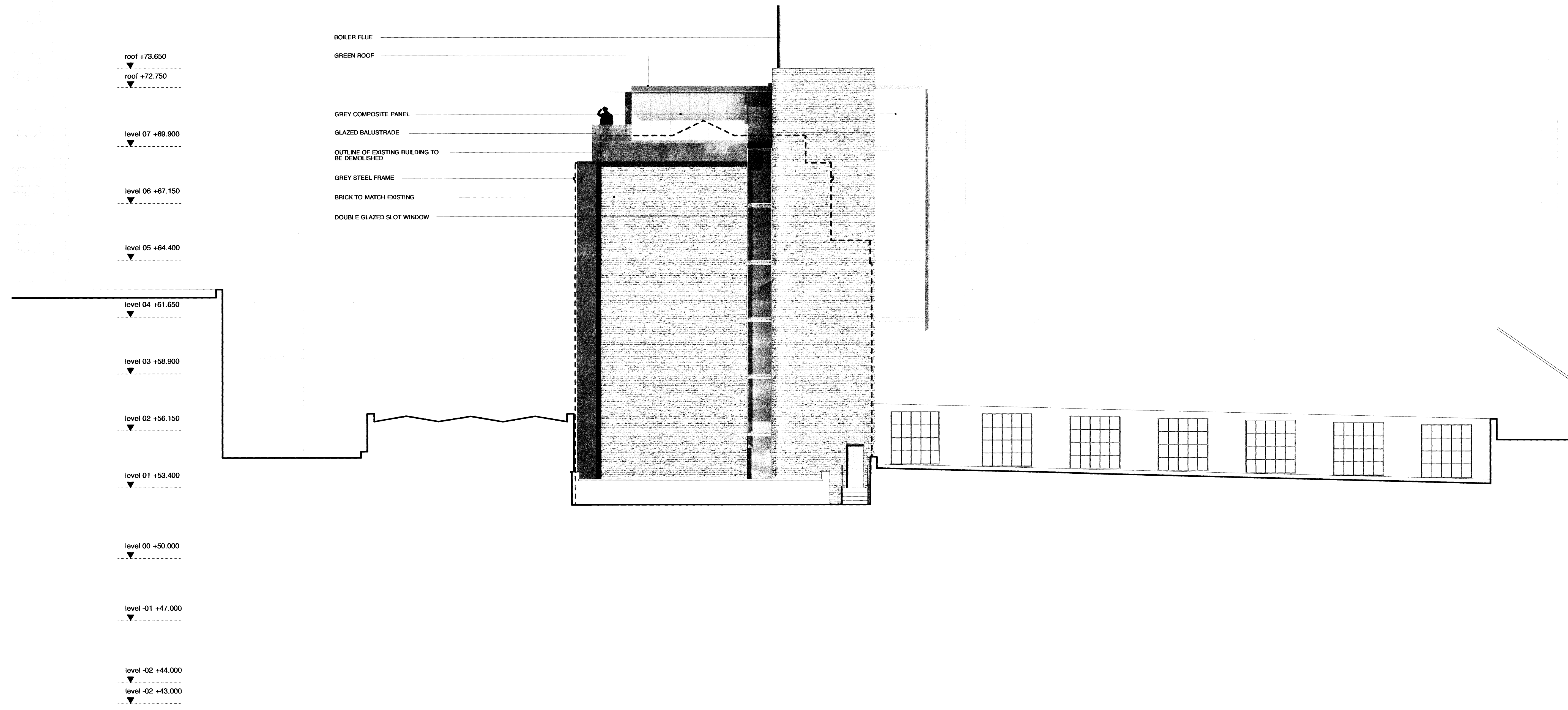


This drawing, the work of architecture to which it relates, and any notes relating to them are protected by copyright. To the extent that this is a design document it is, in addition, protected by design right. All rights in them are reserved. They are provided for your information about the application only. No part of them or any design to which they relate may be reproduced in any form or any means without the prior written permission of Fairview New Homes Limited, except as expressly permitted by law. The doing of any unauthorized act in relation to them may result in both a civil claim and criminal prosecution.

© John Pardey Architects

cad file:

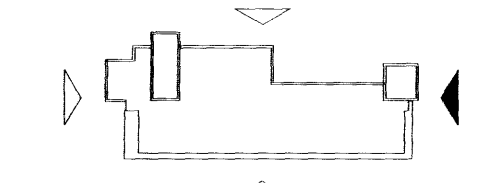
Notes



rev	date	initials	description

drawing:
SOUTH ELEVATION PROPOSED
 project:
0710-BELMONT STREET
 drawing no: **710-452** revision:
 status:
PLANNING
 scale @ A1/A3: **1:100 / 1:200** date:
JUNE 09

KEY PLAN



JOHN PARDEY ARCHITECTS
 Beck Farm Studio
 21 Leonard's Road
 Lynton, Devon
 EX41 5SR
 t 01590 626465
 f 01590 626547
 m 01590 626547
 www.johnpardeyarchitects.com