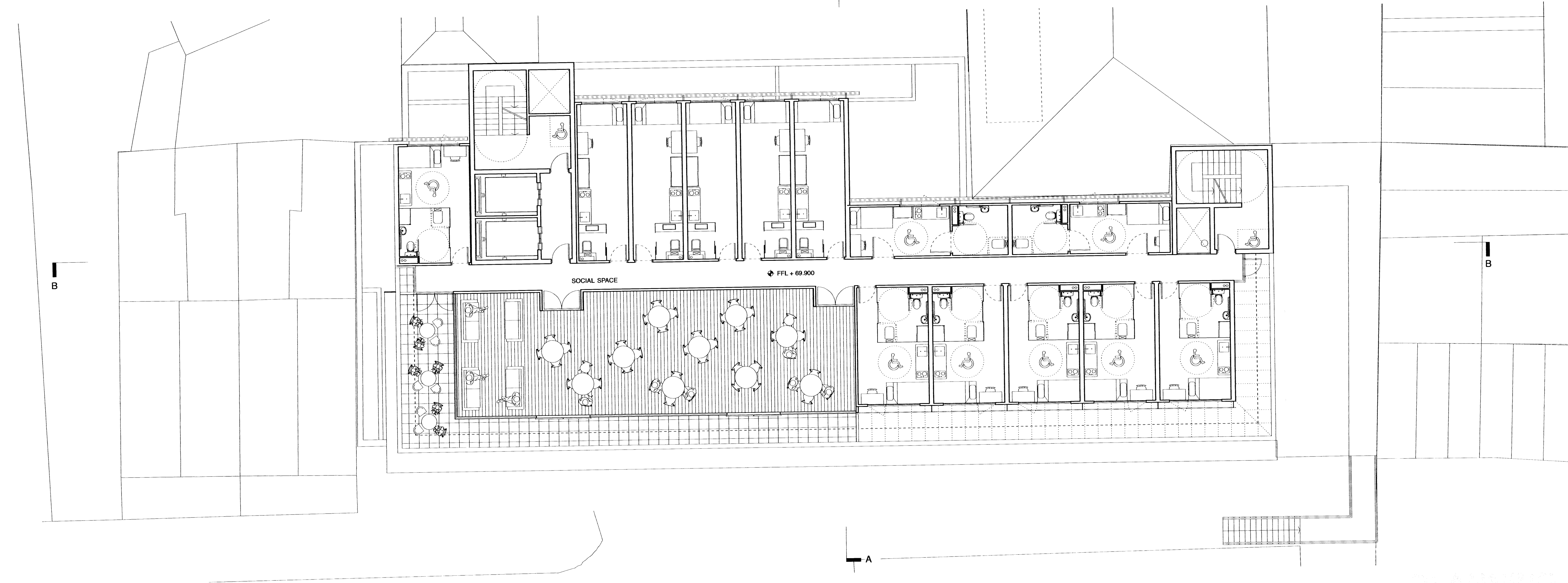


THIRD - SIXTH FLOOR PLAN



SEVENTH FLOOR PLAN

This drawing, the work of architecture to which it relates, and any notes relating to them are protected by copyright. To the extent that this is a design document it is, in addition, protected by design right. All rights in them are reserved. They are provided for your information about the application only. No part of them or any design to which they relate may be reproduced in any form or by any means without the prior written permission of Farview New Homes Limited, except as expressly permitted by law. The doing of any unauthorised act in relation to them may result in both a civil claim and criminal prosecution.

© john pardey architects

cad file:

Notes

rev	date	initials	description

drawing:

THIRD-SIXTH FLOOR PLAN /

SEVENTH FLOOR PLAN PROPOSED

project:

0710-BELMONT STREET

drawing no: revision:

710-253 A

status:

PLANNING

scale @ A1/A3: date:

1:100 / 1:200 NOV 09

JOHN PARDEY

beck farm studio

31 ecorse road

east end

lymington

hamshire

SO43 3SR

t 01590 626465

f 01590 626547

mail@johnpardeyarchitects.com

www.johnpardeyarchitects.com

JPA Support Ltd. registered in England No. 6856548. VAT No. 924 568 543

PLAINVOC

