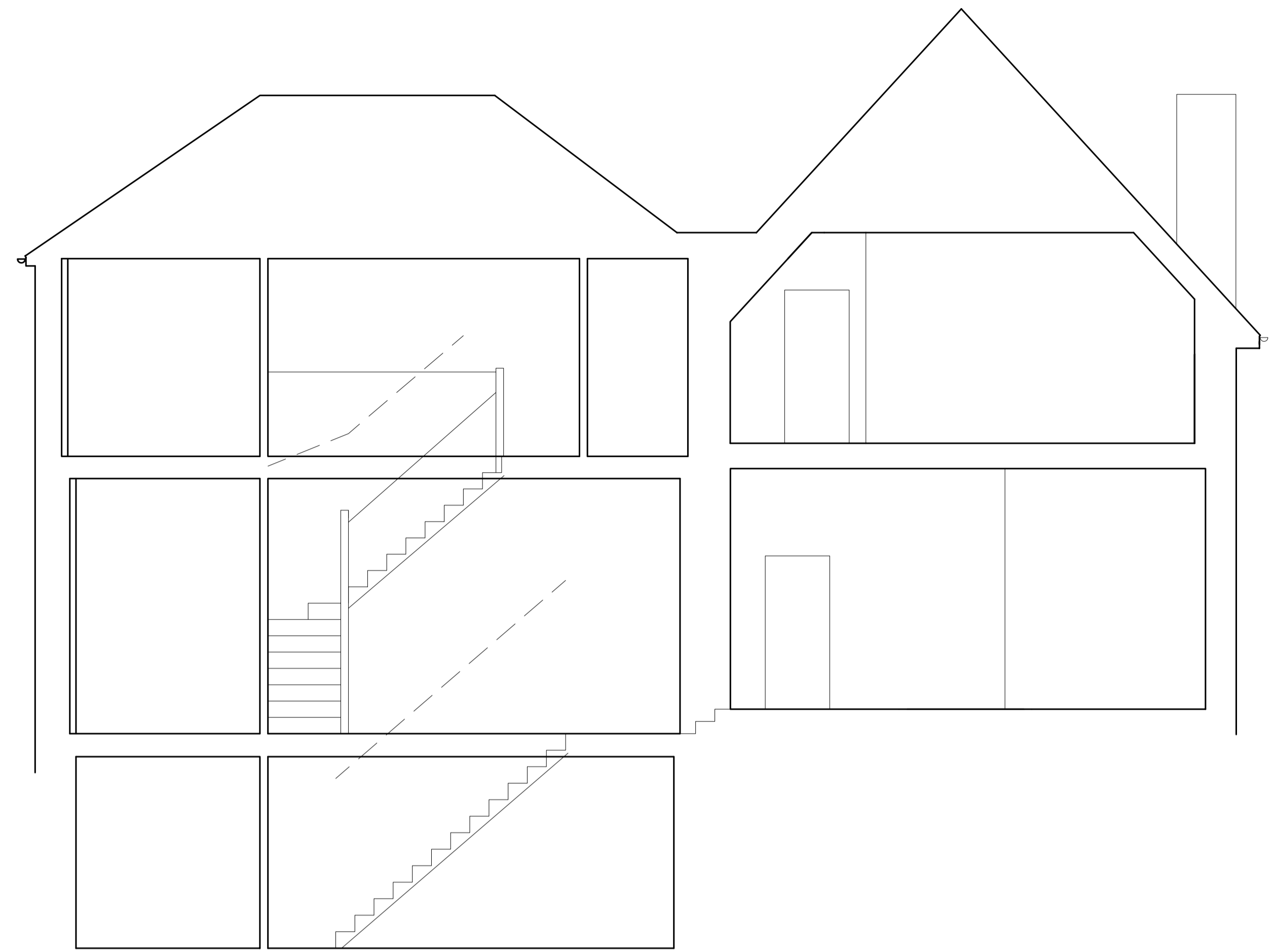
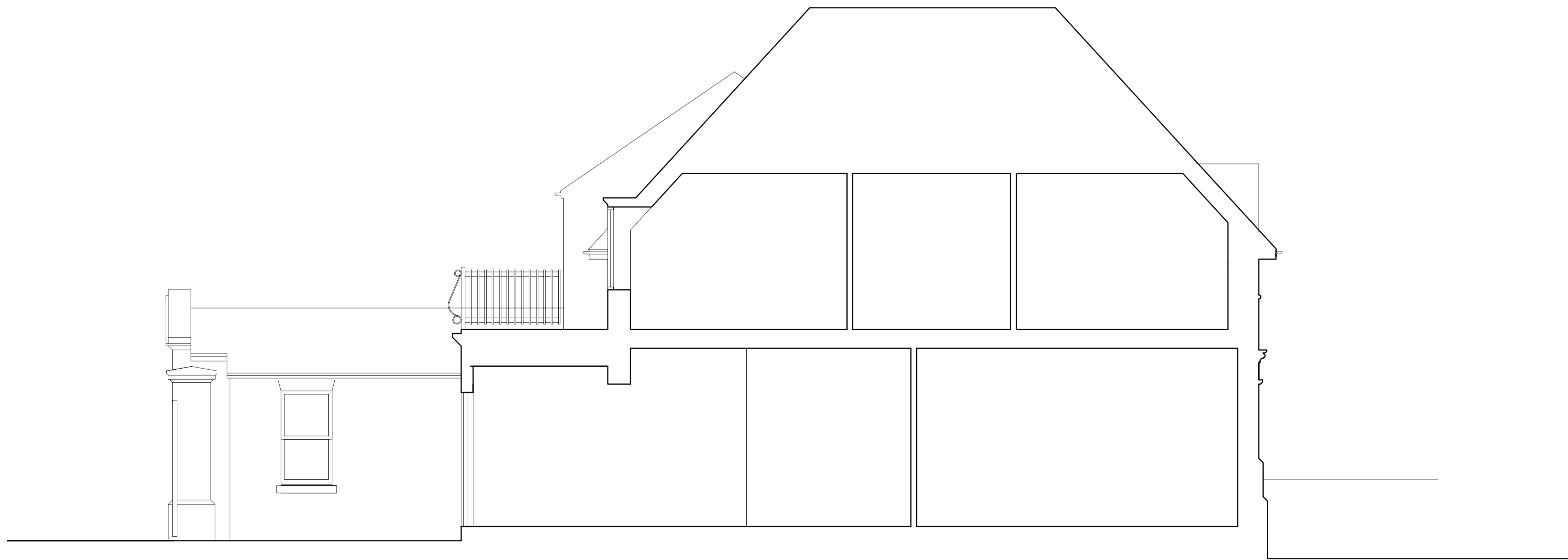




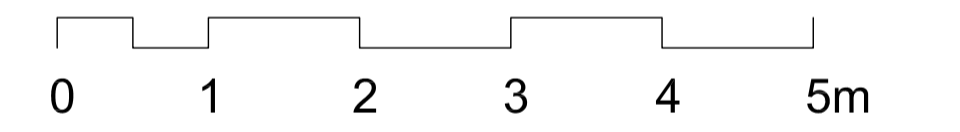
Section A:A



Section D:D



Section B:B



B Oct'09 Planning Issue  
 A Oct'09 Various scheme amendments

Rev	Date	Description

BASEMENTWORKS



88 Merton Road  
 London SW18 5SR

0870 240 1297  
 info@olbc.co.uk  
 www.olbc.co.uk

site  
 Hollow Point, Kings College Road,  
 London NW3 3ES

title  
 Proposed Sections

date	scale
Aug'09	1:50

job	drawing no	rev
378	/P10	B

