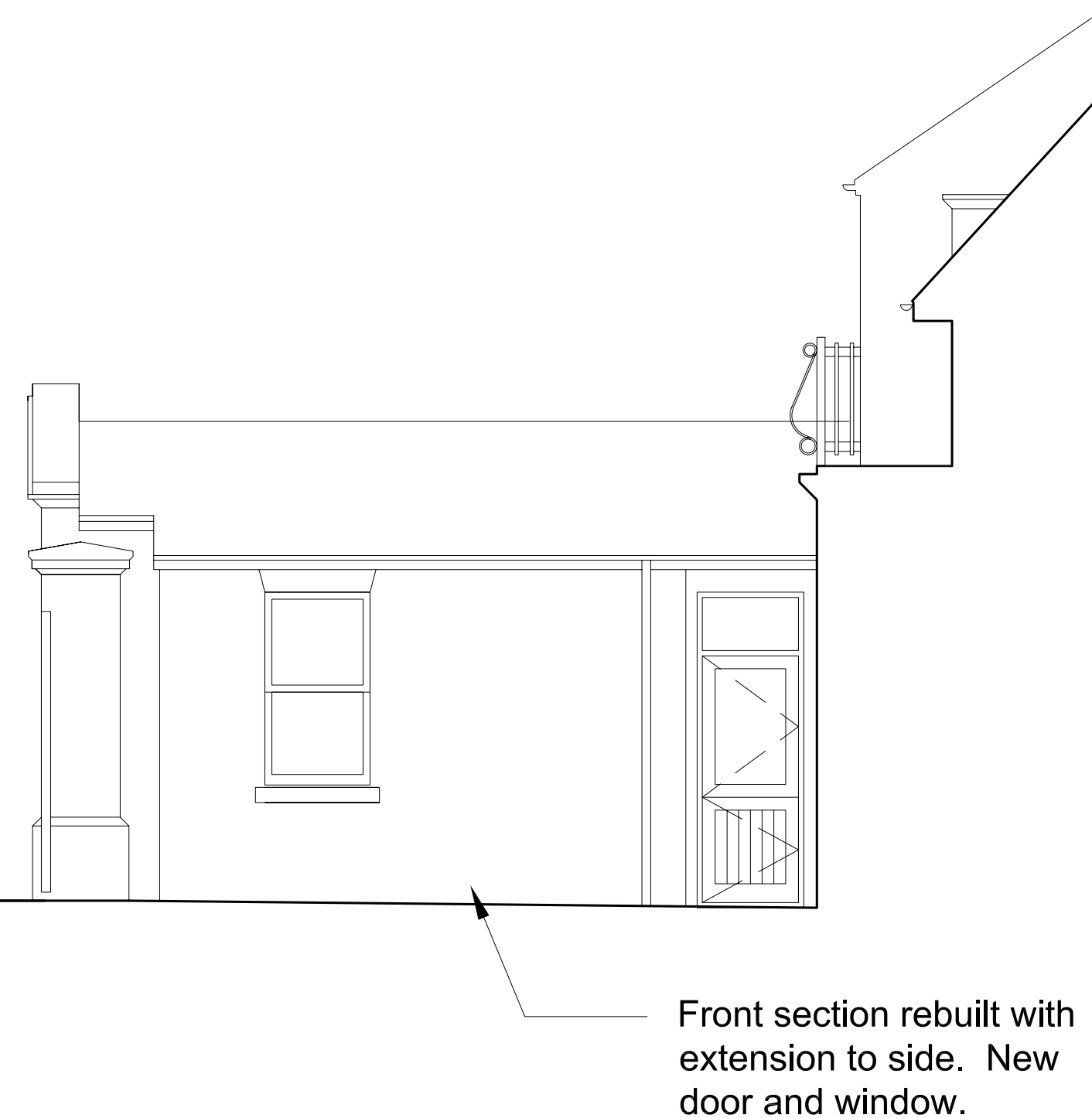
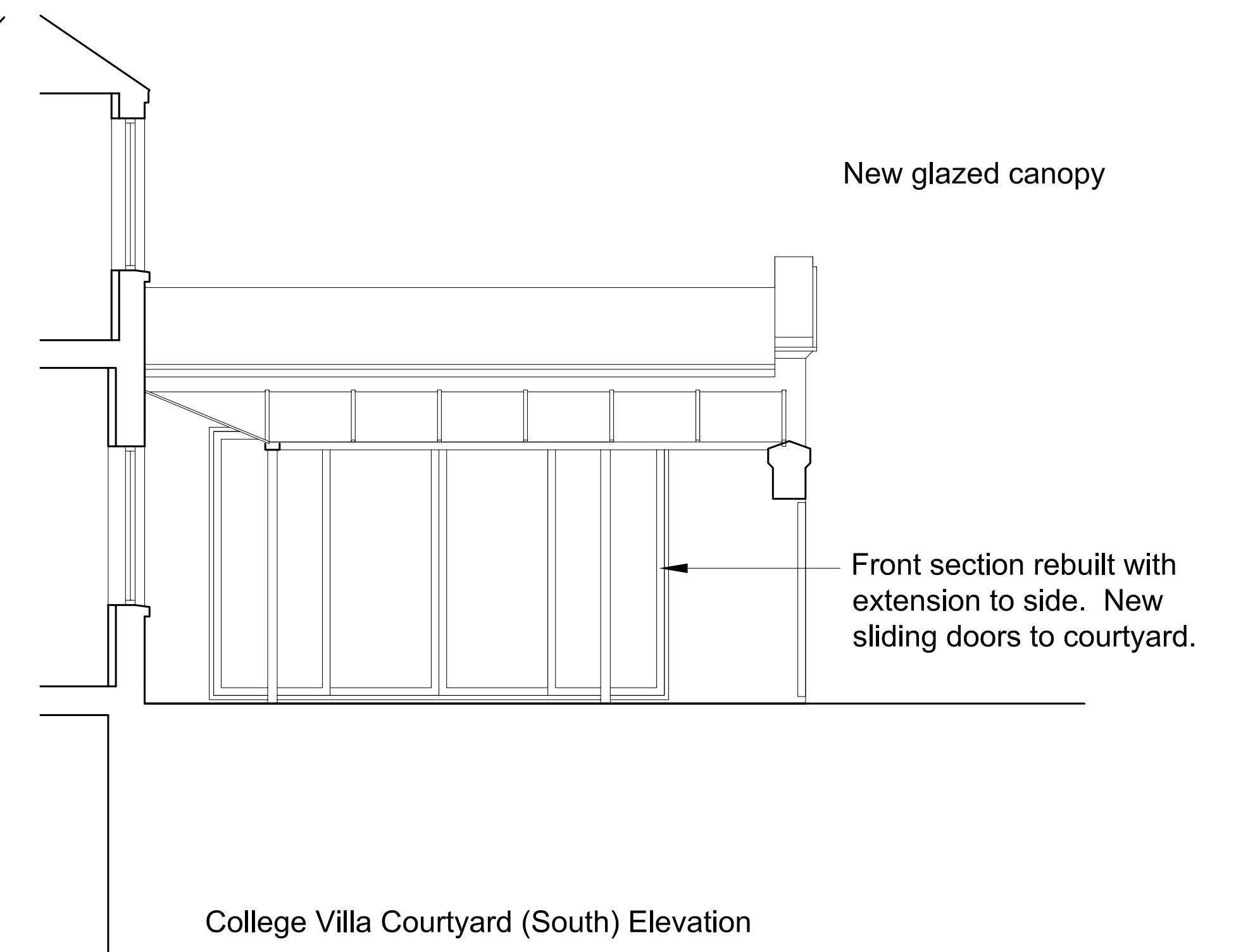


Street (East) Elevation



Hollow Point Courtyard (North) Elevation



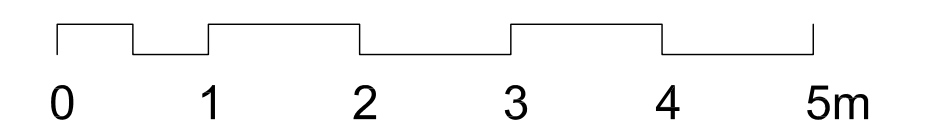
College Villa Courtyard (South) Elevation



Courtyard (East) Elevation / Section C:C



Rear (West) Elevation



B	Oct'09	Planning Issue
A	Oct'09	Various scheme amendments
Rev	Date	Description

BASEMENTWORKS



88 Merton Road
London SW18 5SR

0870 240 1297
info@olbc.co.uk
www.olbc.co.uk

site
Hollow Point, Kings College Road,
London NW3 3ES

title
Proposed Elevations

date	Aug'09	scale	1:50
job	378 / P09	drawing no	rev
			B

