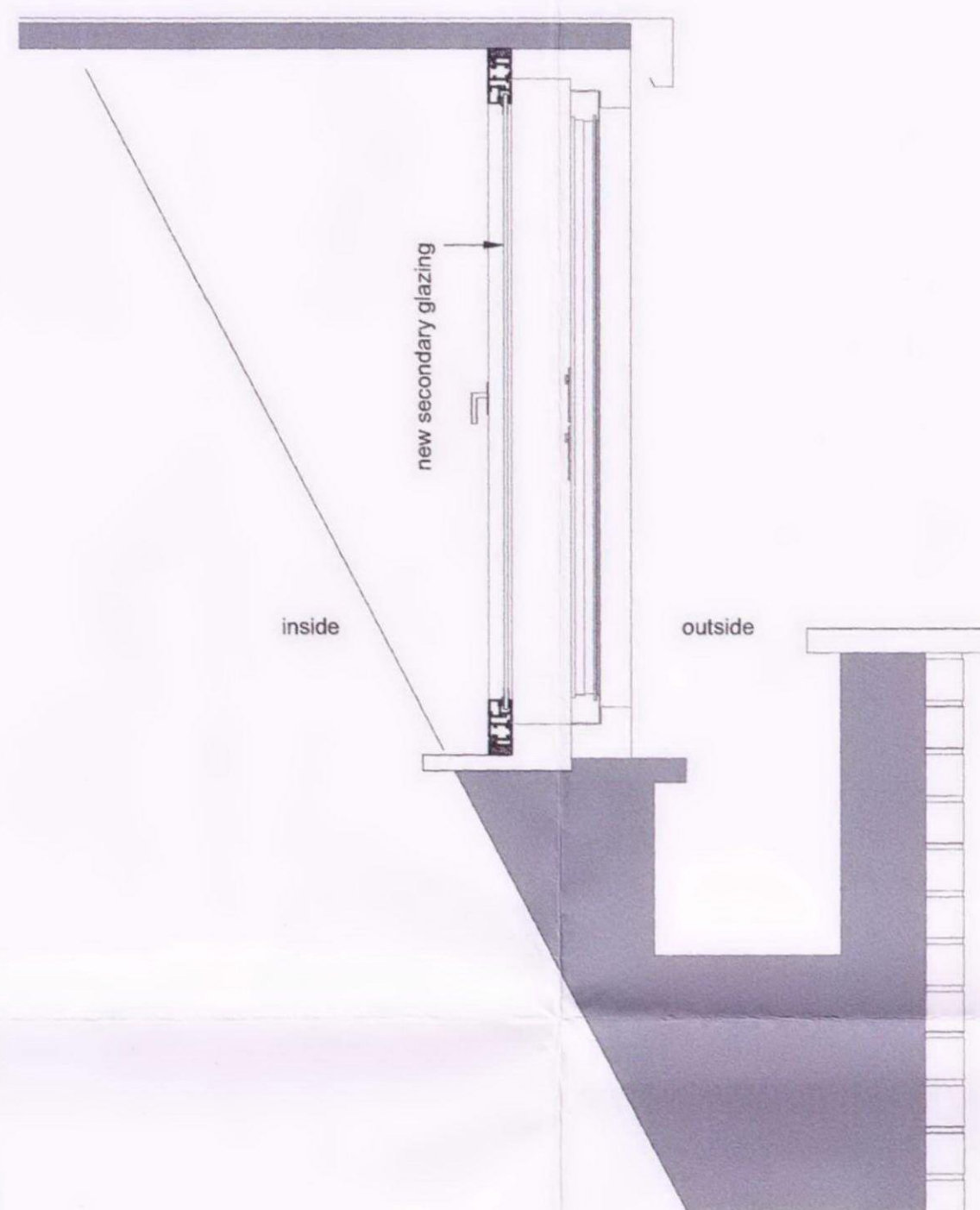
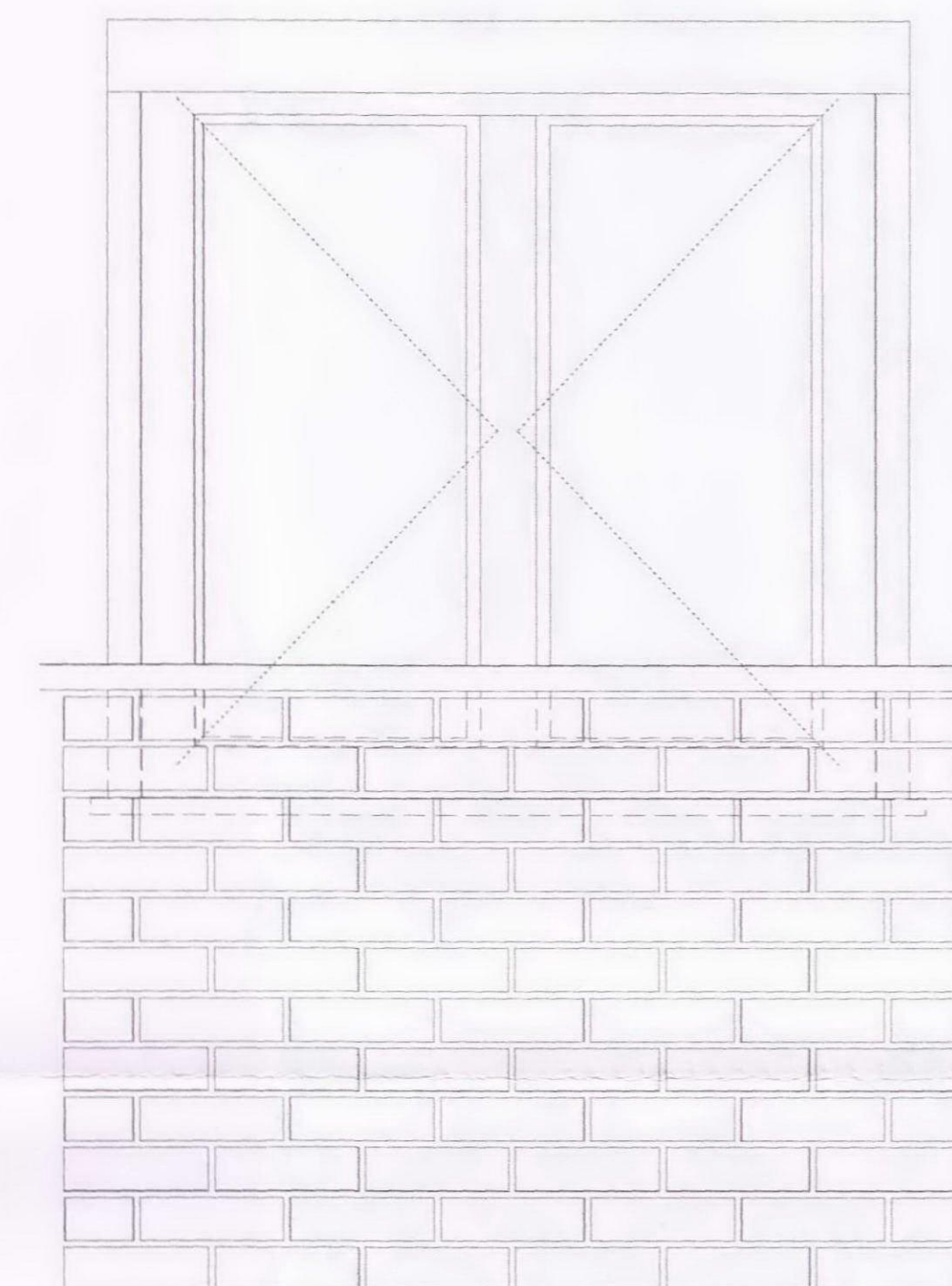


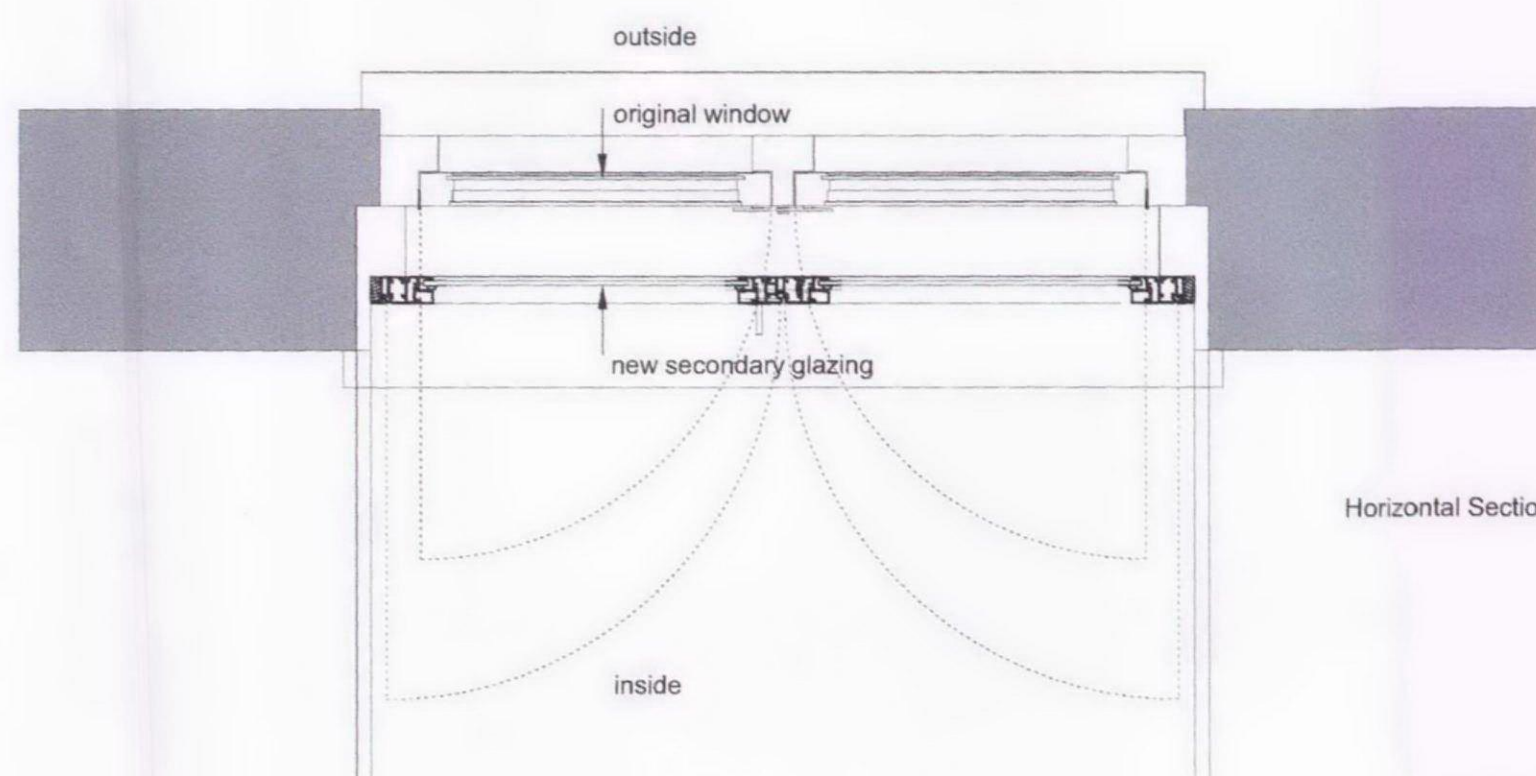
Elevation Inside



Vertical Section



Elevation Outside
(no visual impact from outside elevation)



Horizontal Section

Secondary Glazing

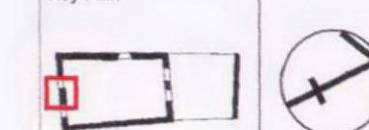
Performance	Acoustic- Rated in accordance with BS EN ISO 717-1 Physical security- BS 7950 Secured by Design (with security lock option)
Frames	Aluminium extruded from 6063T6 alloy
Finish	HIPCA White 9910 semi-gloss Polyester Powder Paint to BS 6496:1984 RAL colour Polyester Powder Paint / Anodised silver AA10 / Anodised bronze AA25
Glazing	6mm to 12mm / 24mm sealed units
Acoustic lining	Mineral fibreboard / pvc faced acoustic foam / Rockwool filled perforated metal trays
Fixing	zinc plated steel
Sealants	grounds and frames bedded in acrylic compound

- General Notes
1. Dimensions are in millimetres unless stated otherwise
 2. All levels are in metres above AOD unless stated otherwise
 3. Dimensions govern. Do not scale off of drawing
 4. All dimensions to be verified on site before proceeding
 5. All discrepancies to be notified in writing to Schmidt-Hess Architects

00 27.11.09 For Planning

Rev Date Reason For Issue

Key Plan



Client

Albert Hay

Project

19 Hampstead High Street
London NW3

Project No Drawing No Rev

009 A4011 00

Drawing Title
Secondary Glazing
Window facing
Hampstead High Street
Third Floor

Scale 1:10

Paper Size @A2

Date 27.11.09

SCHMIDT-HESS ARCHITECTS

Unit 4.3
2-6 Northburgh Street
London EC1V 6AY
www.sh-a.co.uk
info@sh-a.co.uk