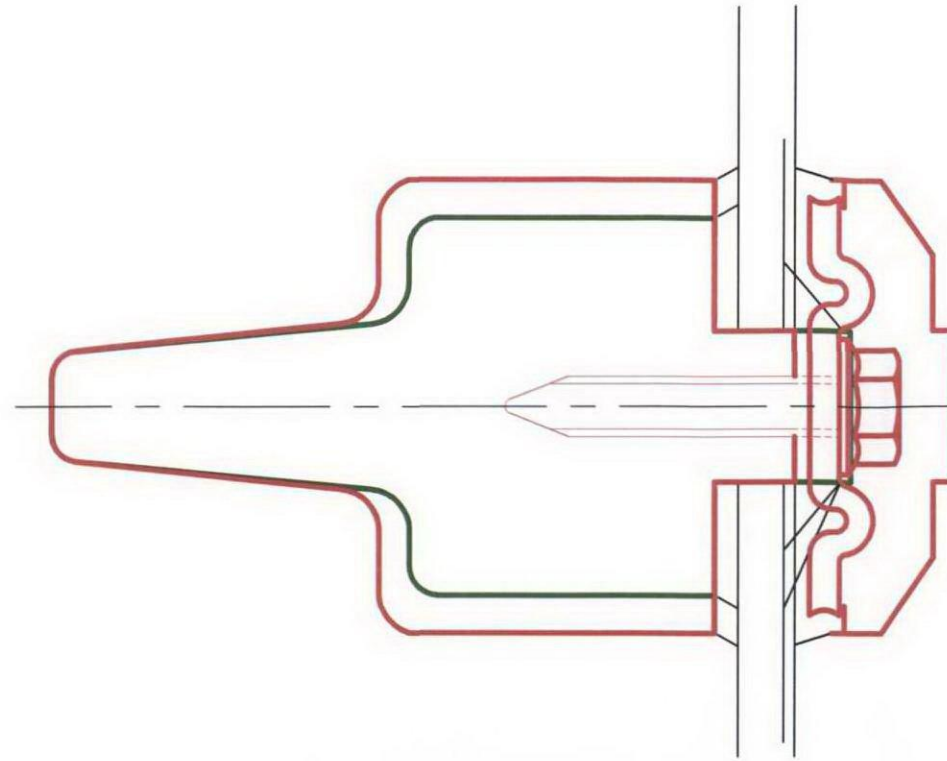
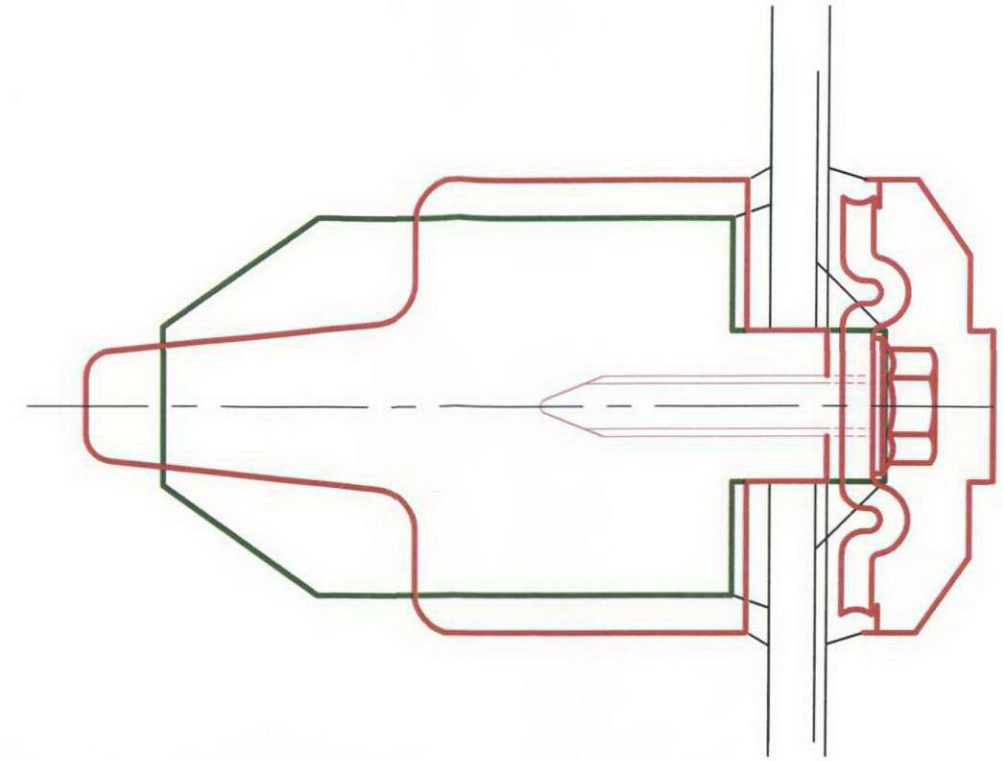


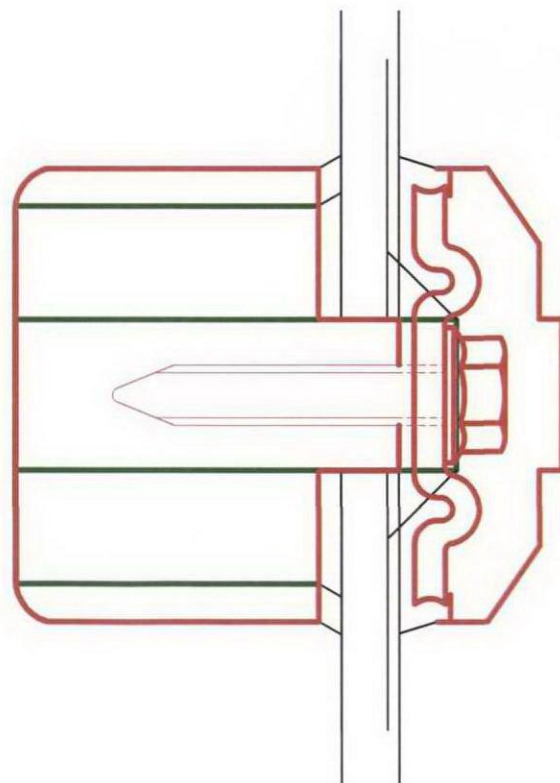
South Facade Glazing
Bar Proposed/Existing
Overlays



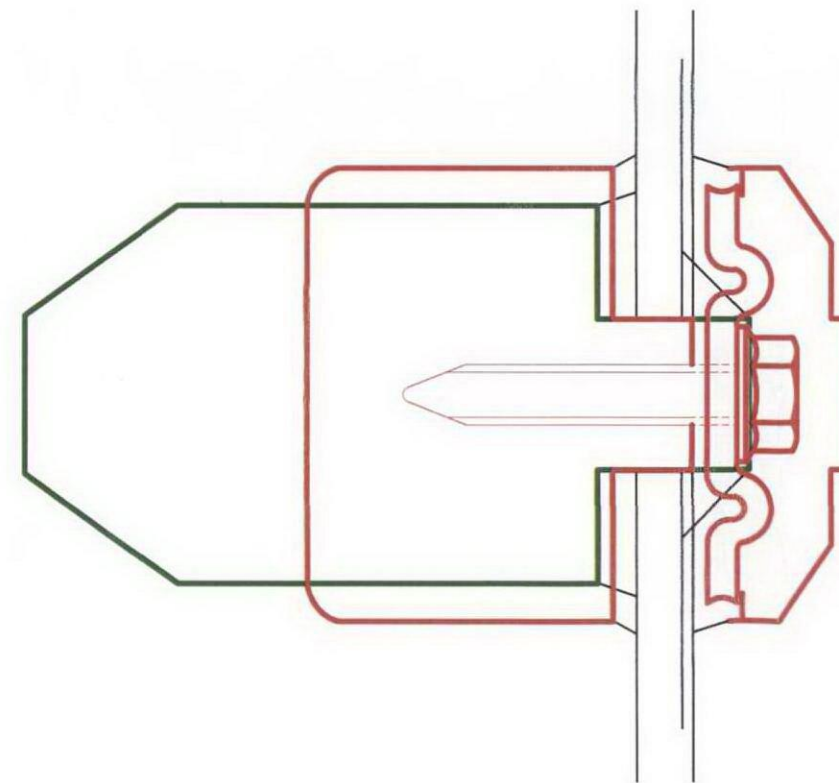
Vertical Glazing Bar Overlay
Proposed Metal / Existing Metal



Vertical Glazing Bar Overlay
Proposed Metal / Existing Timber



Horizontal Glazing Bar Overlay
Proposed Metal / Existing Metal



Horizontal Glazing Bar Overlay
Proposed Metal / Existing Timber

Note
Existing horizontal
timber glazing bar depth
is greater than older
metal horizontal bars.
The timber bars are
believed to date from a
mid 20th century
refurbishment.