

site  
Hollow Point, Kings College Road,  
London NW3 3ES

title  
Proposed Elevations

date	scale
Aug 09	1:50
job	drawing no
378	P09
rev	rev
C	C

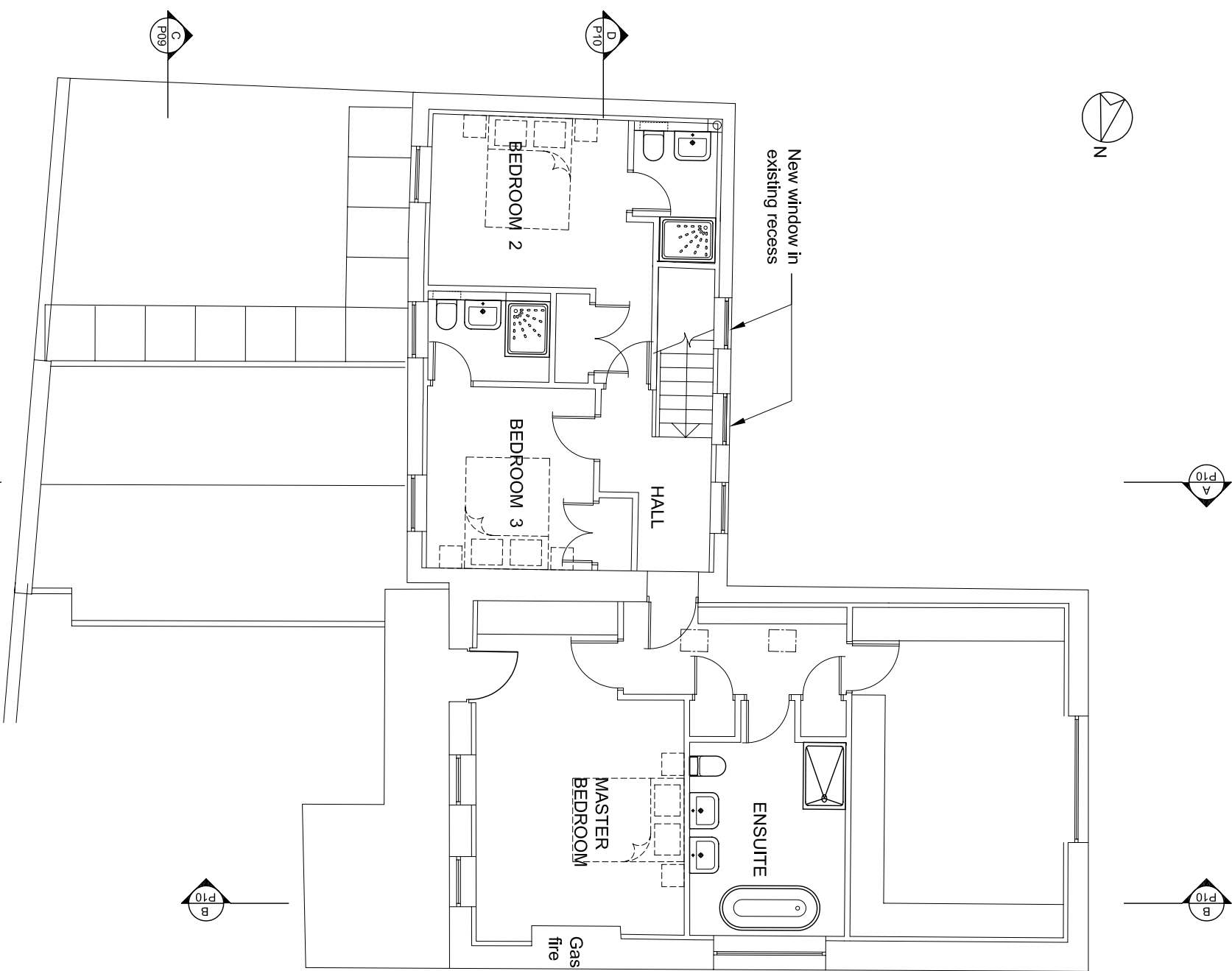
BASEMENTWORKS

88 Merton Road  
London SW18 5SR  
0870 240 1297  
info@olbc.co.uk  
www.olbc.co.uk

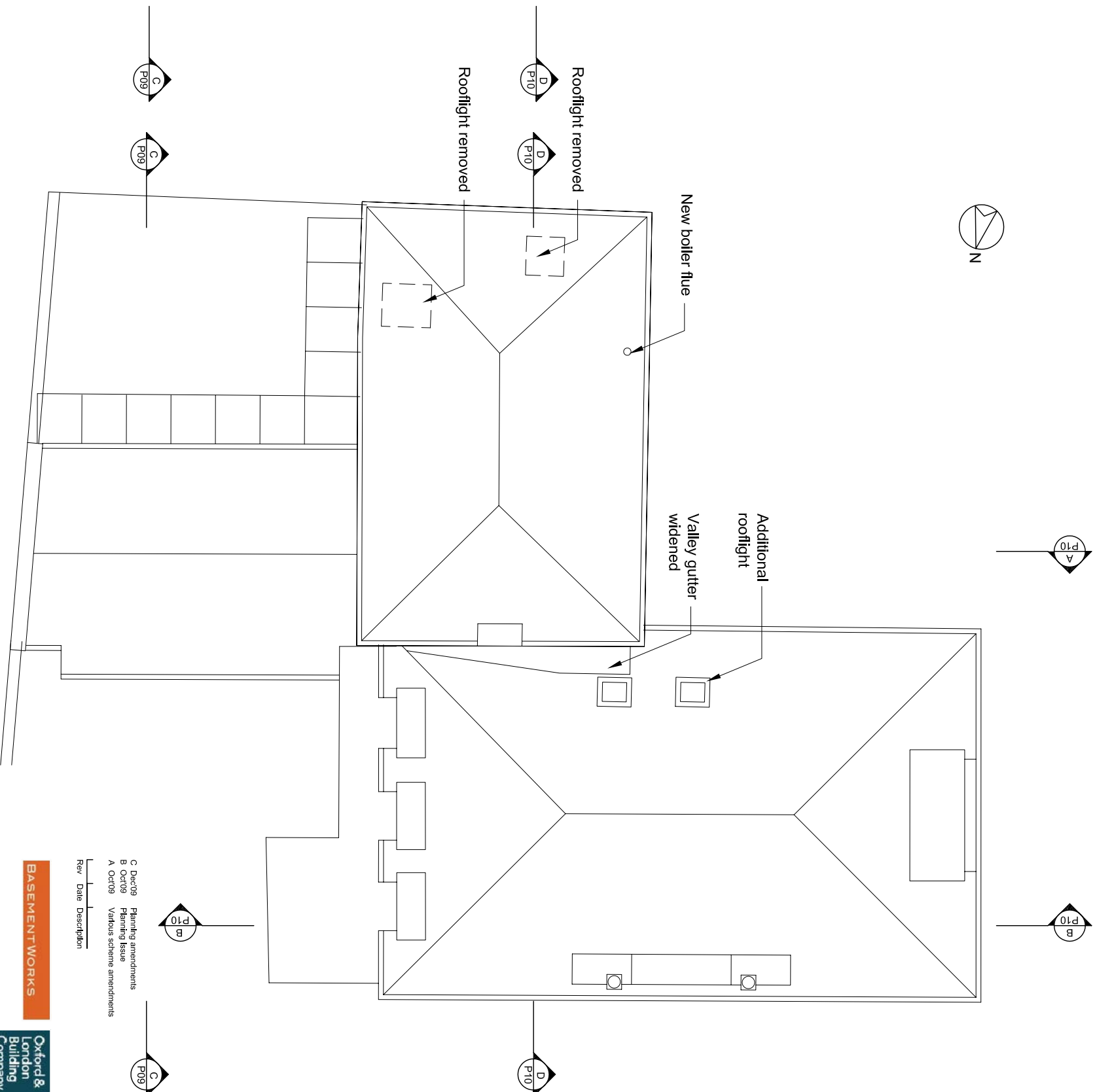
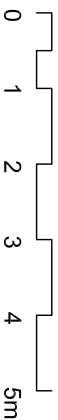


Rev	Date	Description
C	Dec09	Planting amendments
B	Oct09	Planting Issue
A	Oct09	Various scheme amendments

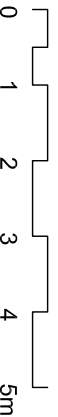




First Floor Plan



Roof Plan



Rev	Date	Description
C	Dec'09	Planting amendments
B	Oct'09	Planting Issue
A	Oct'09	Various scheme amendments

**BASEMENTWORKS**

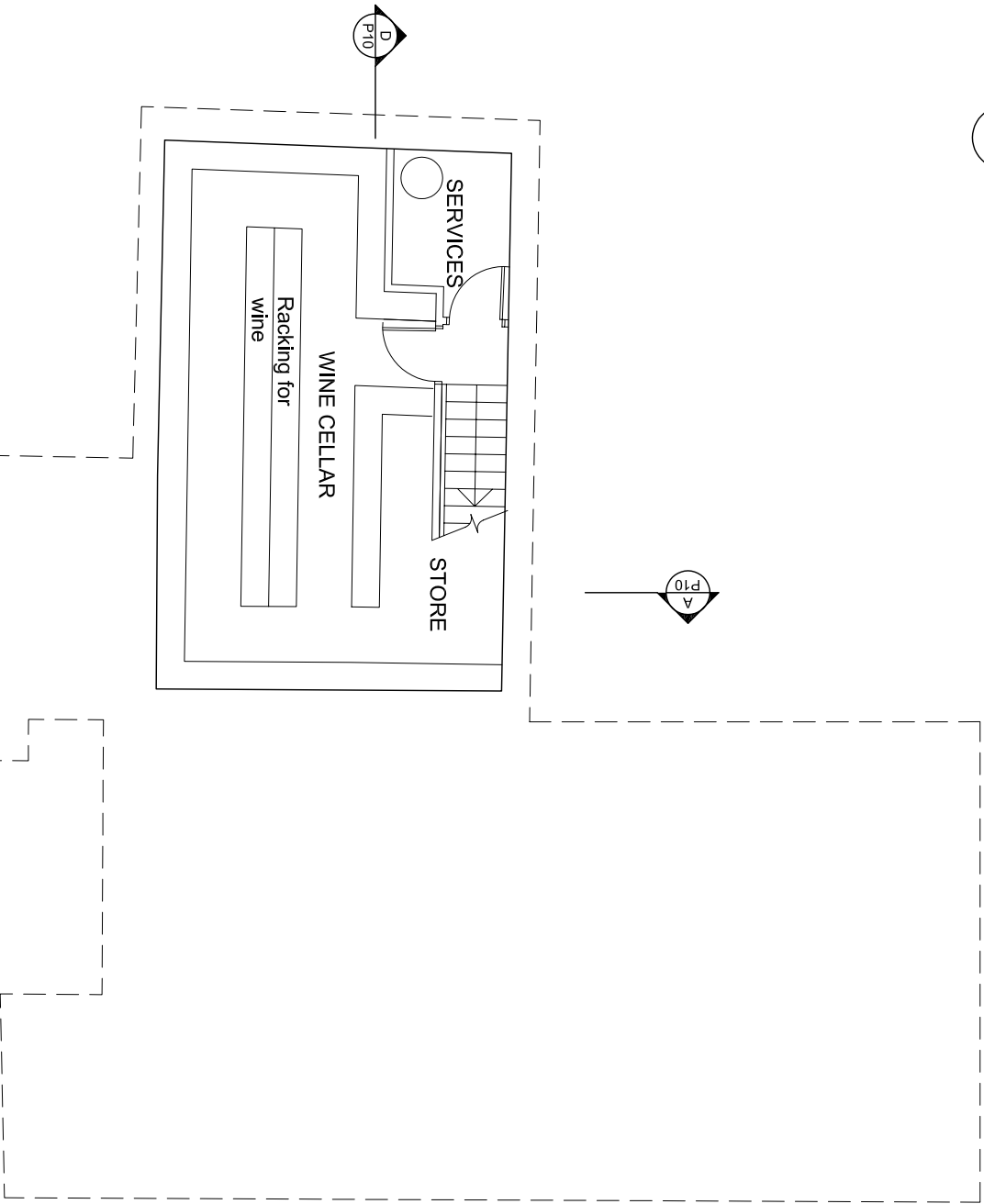
88 Merton Road  
London SW18 5SR  
0870 240 1297  
info@olbc.co.uk  
www.olbc.co.uk



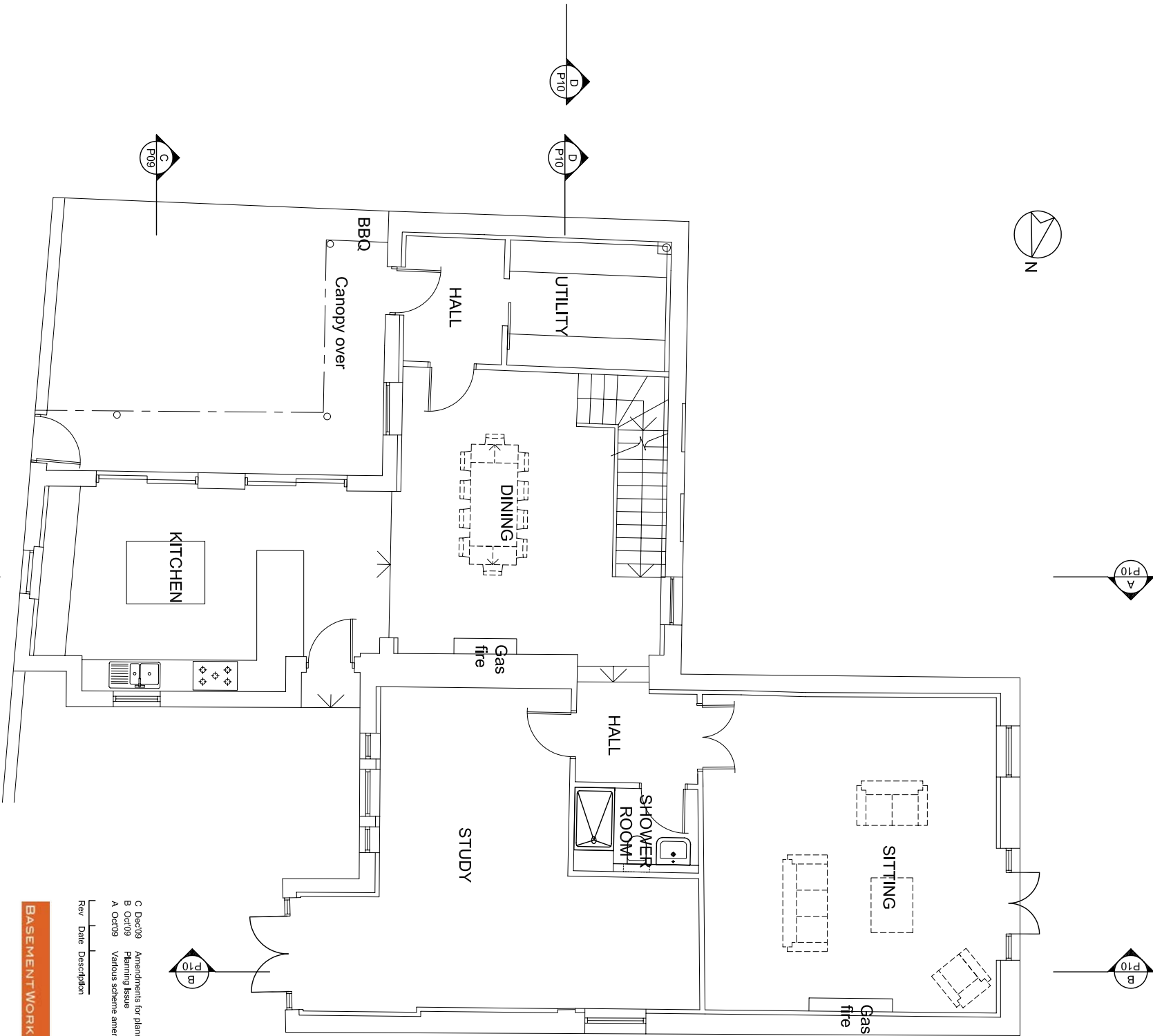
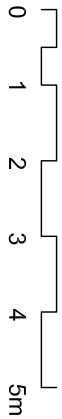
site  
Hollow Point, Kings College Road,  
London NW3 3ES

title			
Proposed First Floor and Roof Plan			
date	scale	job	rev
Aug'09	1:50	drawing no	C
378		/ P08	

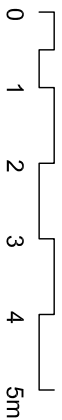




Basement Plan



Ground Floor Plan



88 Merton Road  
London SW18 5SR  
0870 240 1297  
info@olbc.co.uk  
www.olbc.co.uk



**BASEMENTWORKS**

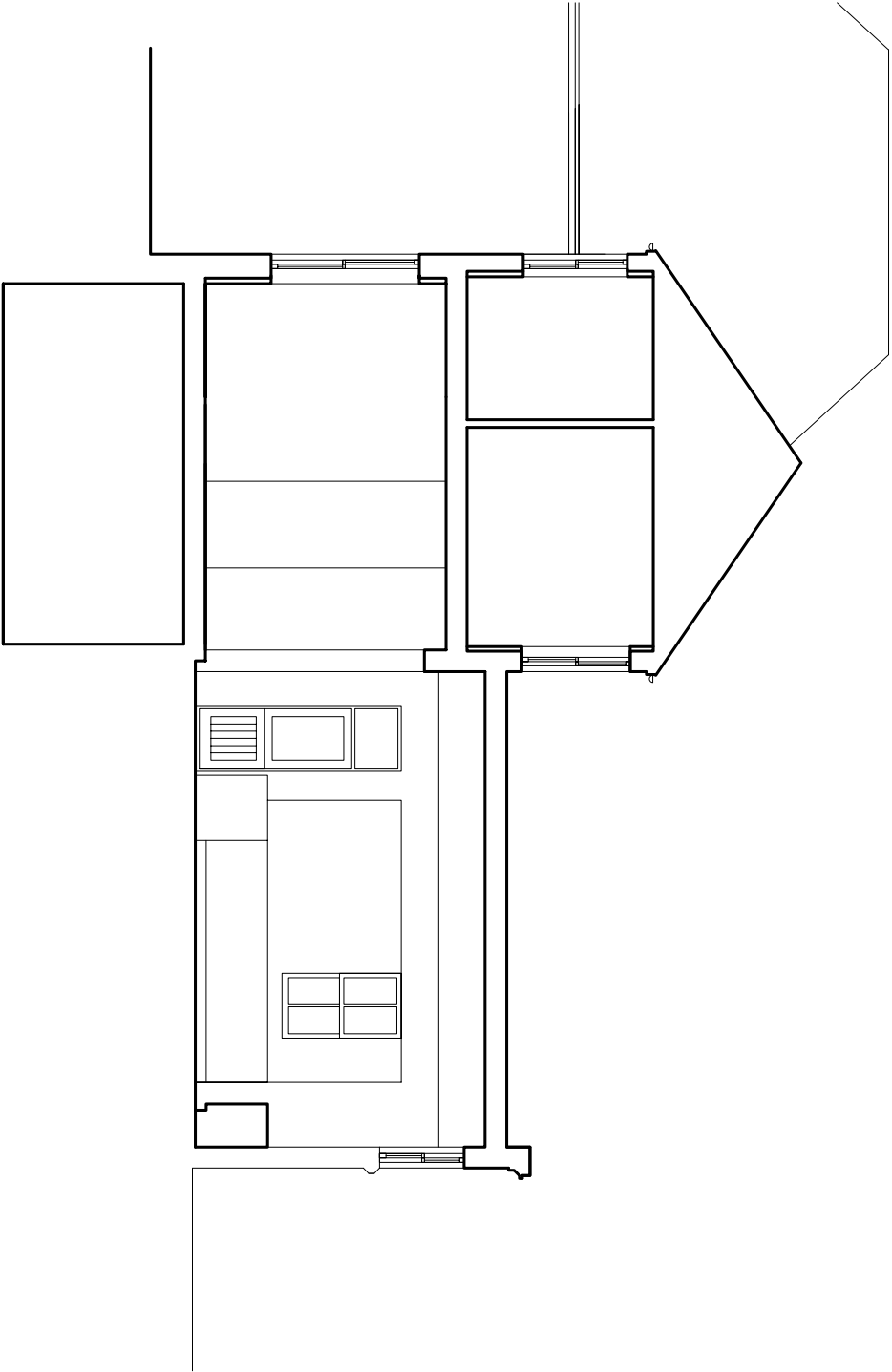
- Rev Date Description
- C Dec09 Amendments for planning
  - B Oct09 Planning Issue
  - A Oct09 Various scheme amendments

site  
Hollow Point, Kings College Road,  
London NW3 3ES

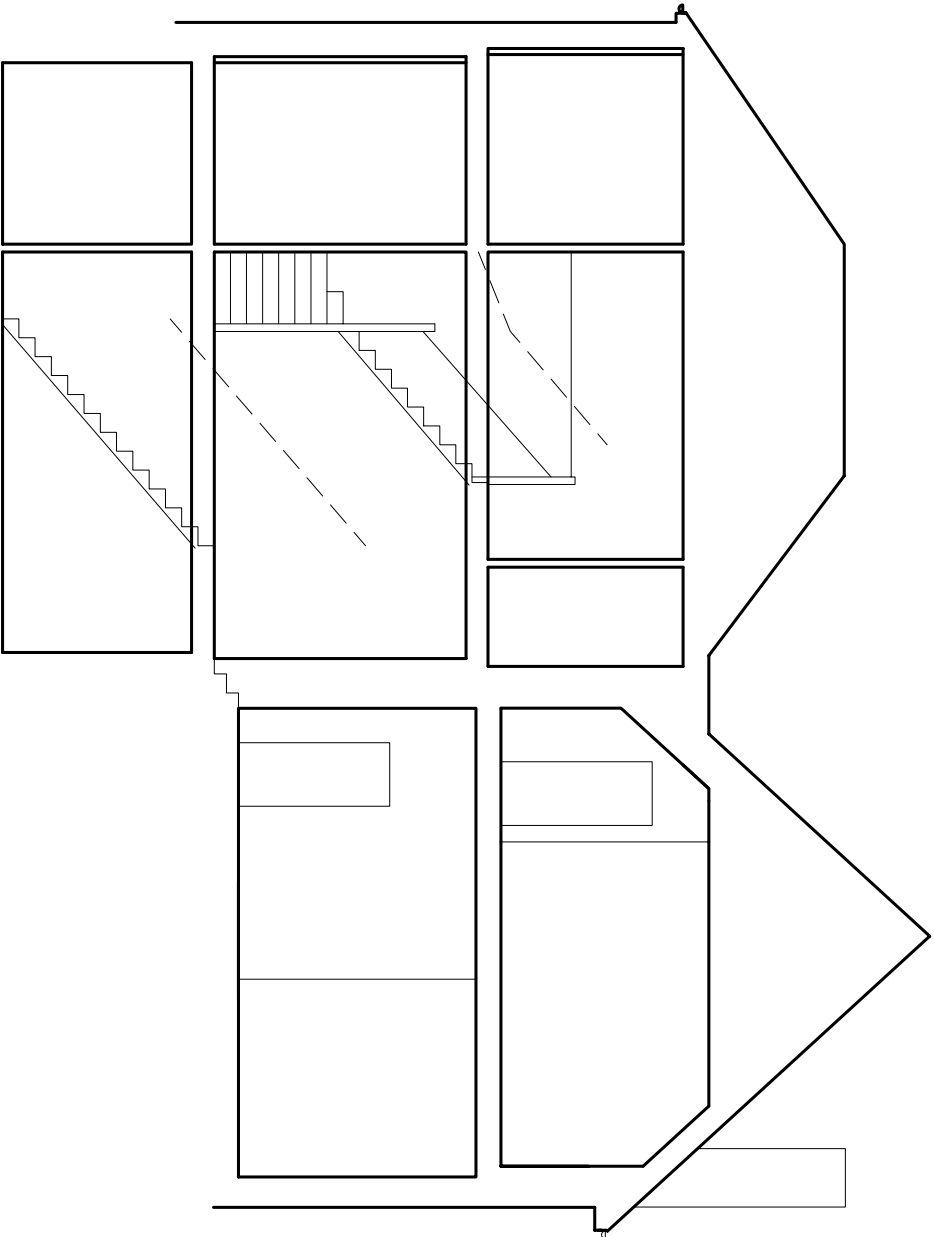
**title**  
Proposed Basement and Ground Floor Plan

date	scale
Aug 09	1:50
job	drawing no
378	P07
rev	rev
C	

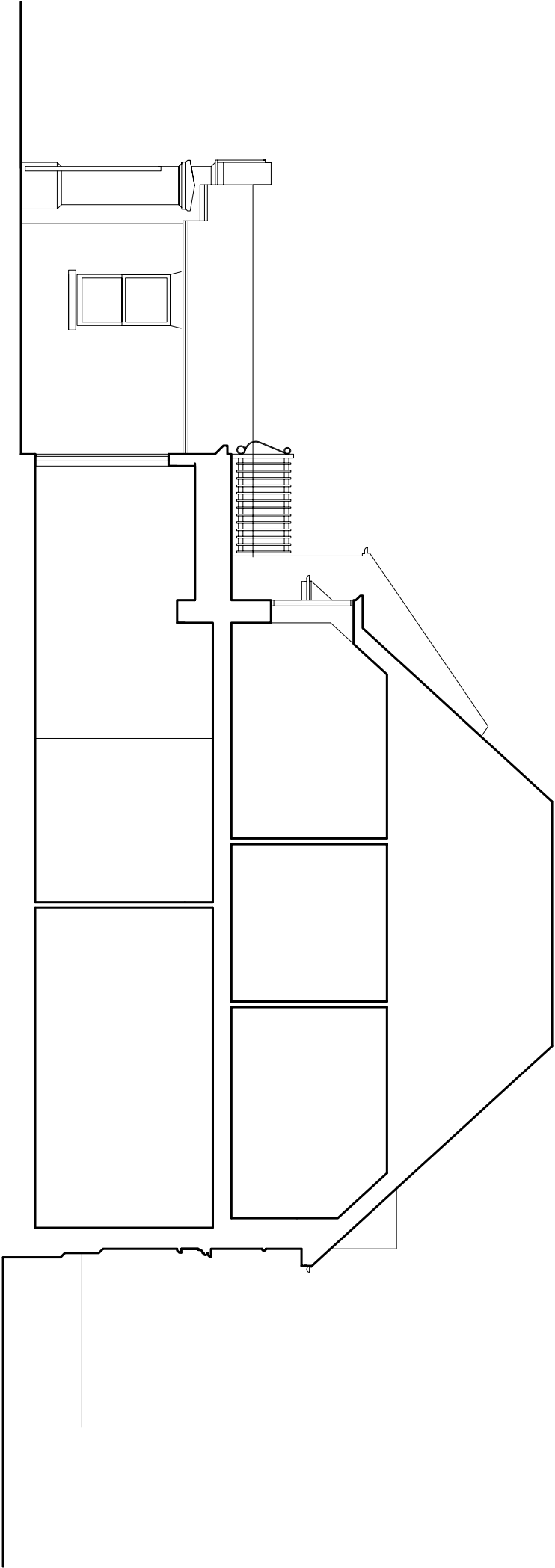




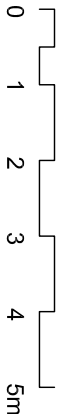
Section A:A



Section D:D



Section B:B



B	Oct'09	Planning Issue
A	Oct'09	Various scheme amendments
Rev	Date	Description

BASEMENTWORKS

88 Merton Road  
London SW18 5SR  
0870 240 1297  
info@olbc.co.uk  
www.olbc.co.uk



site  
Hollow Point, Kings College Road,  
London NW3 3ES

title	Proposed Sections
date	Aug'09
scale	1:50
job	drawing no
rev	B
378	/ P10

© All rights reserved

