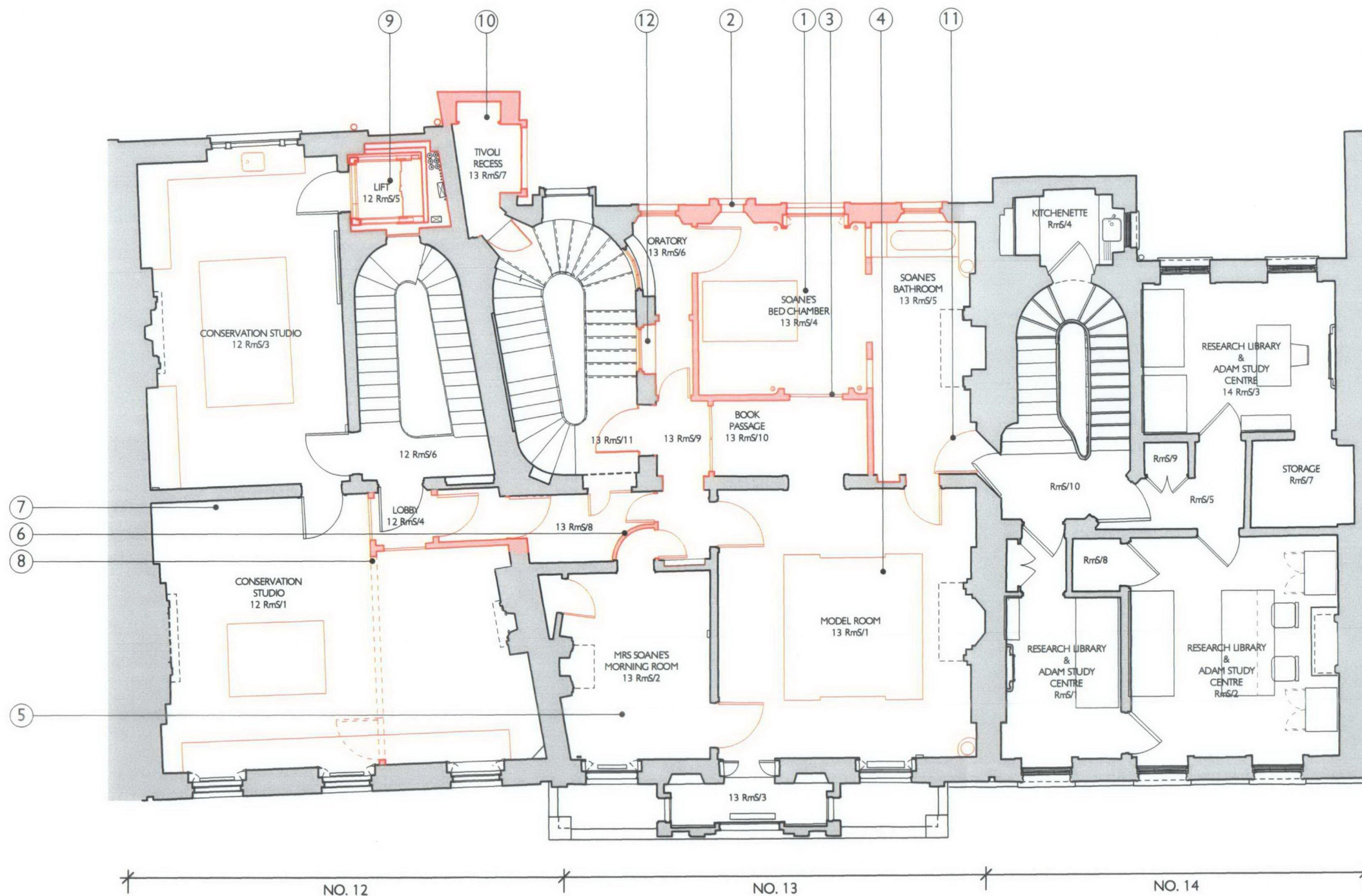


PRINCIPAL WORKS: -

- ① Partitions constructed within the former Second Floor rear room of No. 13 to reconstruct John Soane's Bed Chamber, Bath Room, Oratory and Book Passage. All interiors restored to Soane's design.
- ② All windows in the north wall of No. 13 to be reformed and new windows glazed with stained and coloured glass to recreate Soane's arrangement in 1837.
- ③ All the stained glass to be returned to the doors to the private apartments in No. 13. Replica glass made where missing.
- ④ Restored Pompeian Model Stand put back into the Model Room and the complete interior restored.
- ⑤ Mrs. Soane's Morning Room repaired and redecorated to Soanian form.
- ⑥ Partition to former WC in No. 13 reconstructed and doors put back.
- ⑦ Conservation Studios extended to both rooms of No. 12 and completely refitted.
- ⑧ New partitions on the line of the original in No. 12 to separate Lobby from Conservation Studios.
- ⑨ New lift serving all floors in Nos. 12 & 13 down to Basement level. West opening to Rear Conservation Room to be retained in its existing position, this means that there is a 655mm clear opening from the lift to this room (NB this should be manageable with the Museum's skychair).
- ⑩ Tivoli Recess reinstated to the 1837 arrangement, north wall reconstructed on original line, replacement stained glass window inserted in east wall, domed ceiling feature reinstated and skylights put back.
- ⑪ Modern secondary breakthrough door removed and new custom made fire-door, re-creating the historic features on the Bathroom side to be reinstated.
- ⑫ South window from the Oratory to the Staircase to be reinstated. Both windows onto the stairs to be re-glazed with their original stained glass, or reinstated with re-created stained glass where it is missing.



Rev A: Nov 2009: Shakespeare Recess amended.

NB: This drawing was previously drawing no. 506MP/GA010D in the Masterplan Core Project.

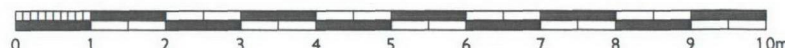
SIR JOHN SOANE'S MUSEUM OPENING UP THE SOANE

GENERAL DRWG 506MP2/GA004A
ARRANGEMENT SCALE 1:100 @ A3
PROPOSED SECOND DATE JUL. 2009

FLOOR PLAN
JULIANHARRAP
ARCHITECTS

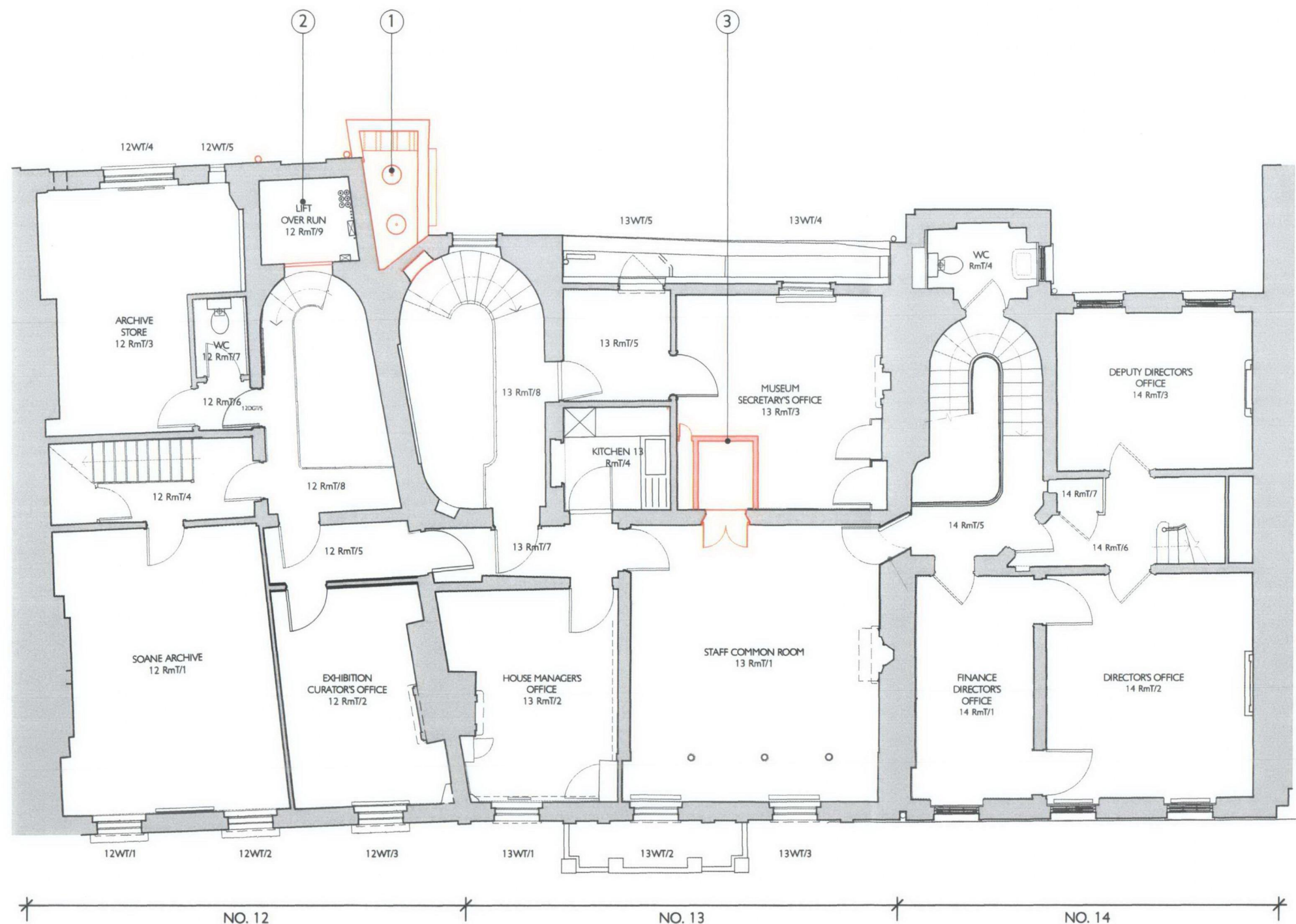
95 KINGSLAND ROAD LONDON E2 8AG
PHONE 020 7729 5111 FAX 020 7739 8306

SCALE



PRINCIPAL WORKS: -

- ① WC off No.13 stairway removed and roof to Tivoli Recess below reformed at original height. Historic spun glass rooflights which exist on the current roof will be reused and repositioned on the reformed roof. New canted rooflight formed to north side of the roof.
- ② No. 12 stair closet closed off to provide space for the lift overrun.
- ③ Light shaft formed within rear office of No. 13 giving light down into Book Passage below, from a new rooflight formed in the flat lead roof above this space.



Rev. A: Nov. 2009: Roof of Tivoli Recess amended.

NB: This drawing was previously drawing no. 506MP/GA011E in the Masterplan Core Project.

SIR JOHN SOANE'S MUSEUM OPENING UP THE SOANE

GENERAL DRWG 506MP2/GA005A

ARRANGEMENT SCALE 1:100 @ A3

PROPOSED THIRD DATE JUL. 2009

FLOOR PLAN

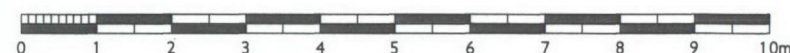
JULIAN HARRAP

ARCHITECTS

95 KINGSLAND ROAD LONDON E2 8AG

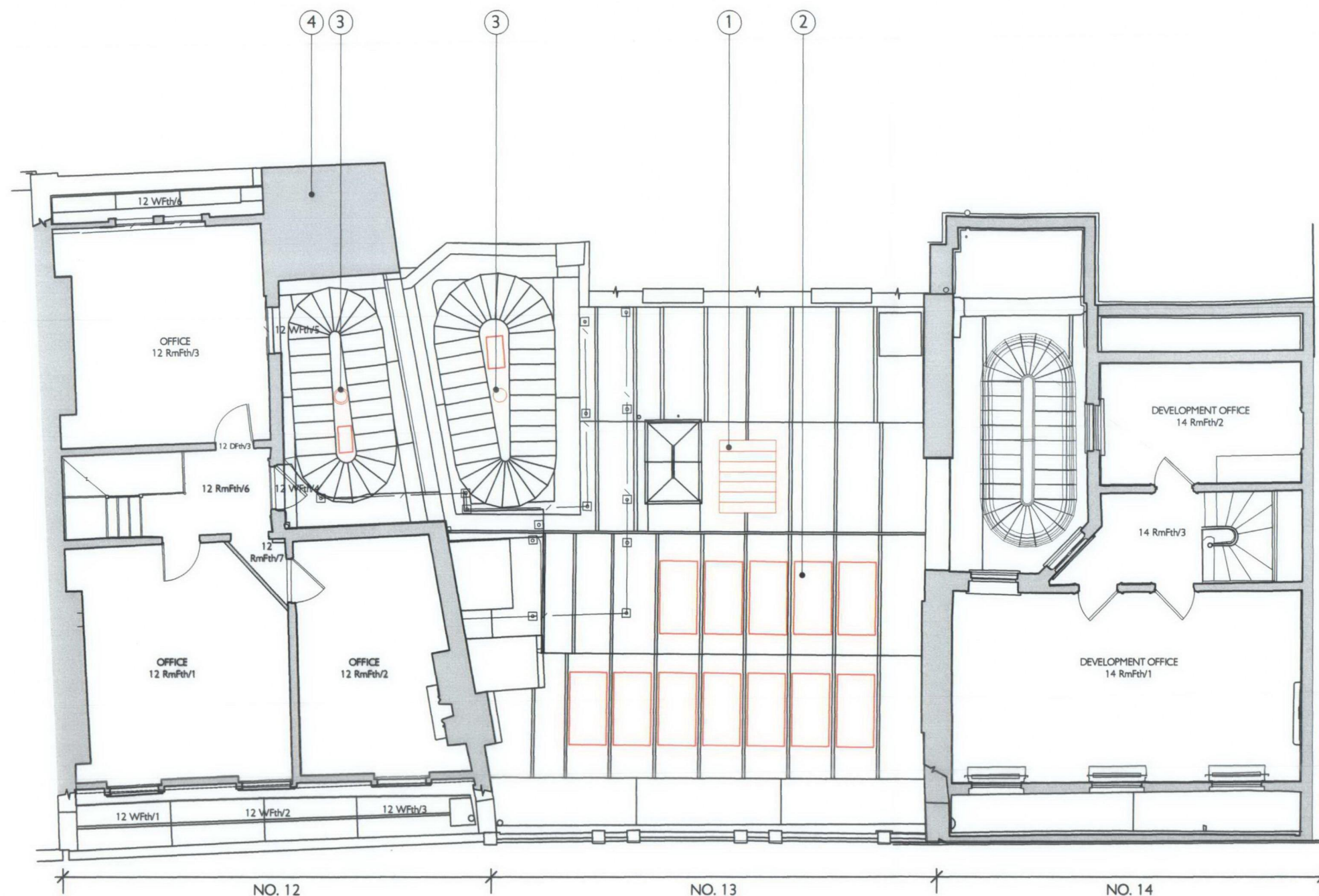
PHONE 020 7729 5111 FAX 020 7739 8306

SCALE



PRINCIPAL WORKS: -

- ① New rooflight in the existing flat roof of No. 13 to light down into the light well to the Book Passage on the Second Floor.
- ② Proposed layout of new photovoltaic solar panels laid, to the same fall as the existing lead roof, between the existing lead rolls.
- ③ Existing vents over the rooflights above the staircases in Nos. 12 & 13 to be removed and replaced with 2no. new passive, solar powered extract vents, styled to appear as traditional ventilation cowls.
- ④ Existing cold water storage tank and all associated service connections, carefully removed from this space, allow for repairing the building fabric effected by the removed elements.



Rev. A: Nov. 2009: Items from Environmental Energy Audit added.

NB: This drawing was previously drawing no. 506MP/GA012E of the Masterplan Core Project.

SIR JOHN SOANE'S MUSEUM OPENING UP THE SOANE

GENERAL DRWG 506MP2/GA006A

ARRANGEMENT SCALE 1:100 @ A3

PROPOSED FOURTH DATE JUL. 2009

FLOOR PLAN

JULIAN HARRAP

ARCHITECTS

95 KINGSLAND ROAD LONDON E2 8AG

PHONE 020 7729 5111 FAX 020 7739 8306

SCALE

