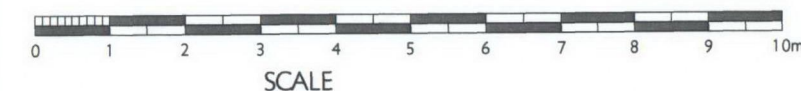


# PRINCIPAL WORKS: -

- ① New platform lift in the front area of No. 12 to bring disabled people down from pavement level. Platform lift to be used for emergency escape.
- ② New fire partition adjacent to Warders' Mess.
- ③ Boiler Room extended to accommodate relocated services equipment. New WCs installed in former Cast Store, adjacent to the Boiler Room.
- ④ Catacombs reconstructed in their original location and openings to New Court and adjacent store closed.
- ⑤ New Link Passage built in north-east corner of the New Court in the position of Soane's former link building.
- ⑥ Doorway in south-west corner of Ante Room re-opened to provide access through to West Chamber.
- ⑦ New lift serving all floors in Nos. 12 & 13 up to and including the Second Floor. Alter entrance to the lift from room 12RmB/7, as illustrated.
- ⑧ Existing store to become Warders' Cloakroom.
- ⑨ Old Kitchen to be used for films and virtual tours.
- ⑩ Existing electrical circuit board to be retained in current position but turned around to be accessed from the Store (room 13RmB/19). New cupboard to be created in this location.
- ⑪ Move existing door to West Vault 380mm to the west to suit position of new platform lift. Existing fabric to be re-used where possible.
- ⑫ New door to the New Court to be installed from the Store Room 13RmB/19. New opening to be formed in the position of the previously blocked up window within the wall rebuilt by Wild (1889).
- ⑬ Existing safe door and frame to be carefully taken off and repositioned so that it forms the doorway to the Boiler Room, 12 RmB/5 (13b).
- ⑭ Existing step between the 1960's link doorway to be removed and a new ramp to be installed within the depth of the party wall between Nos. 12 & 13.



Rev. D: Nov 2009: Minor amendments made.  
Rev. C: Nov 2009: Door to New Court amended.  
Rev. B: Nov 2009: Drawings updated  
Rev. A: Oct 2009: Drawings updated

NB: This drawing was previously drawing no. 506MP/007E of the Masterplan Core Project.

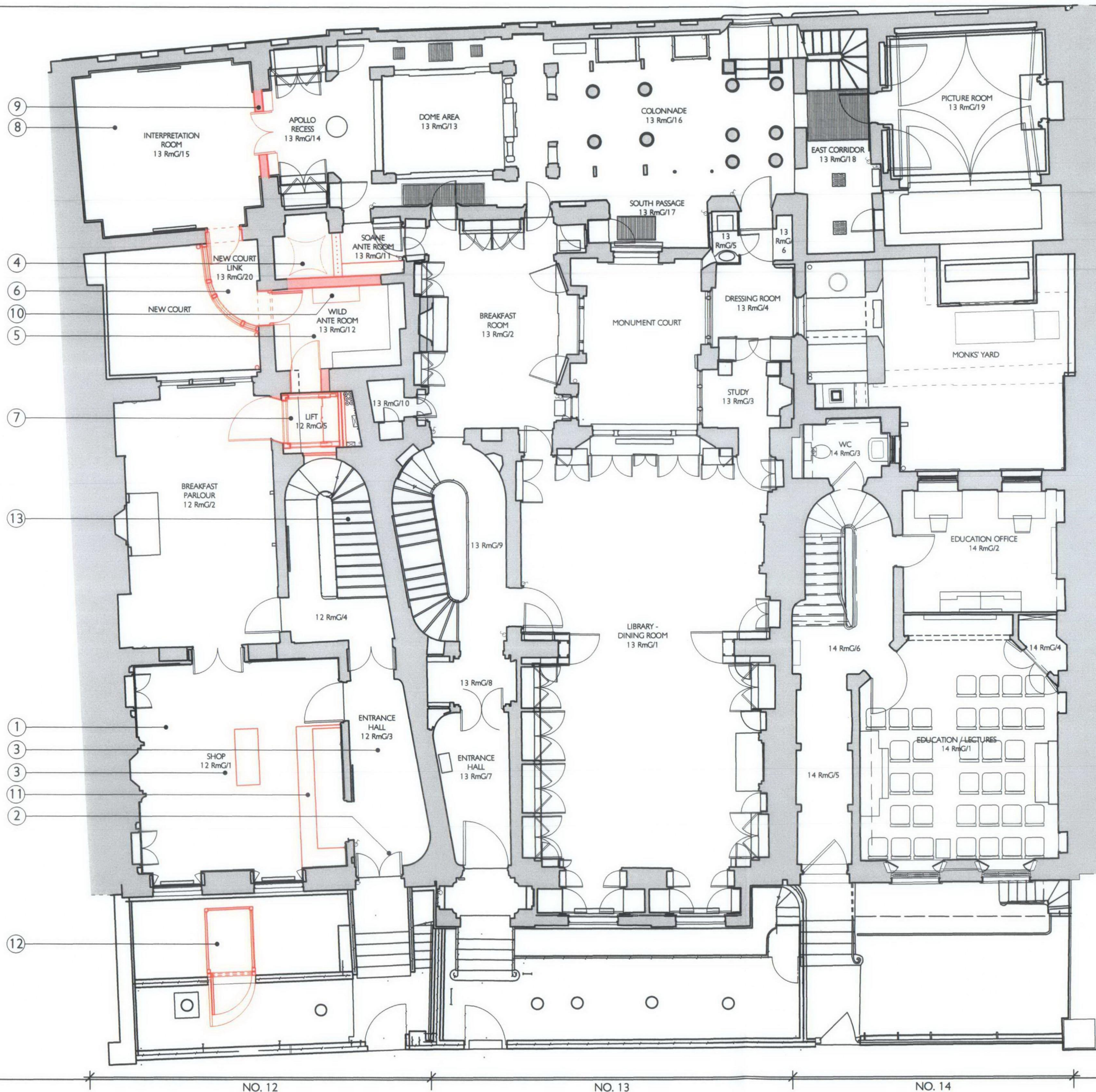
## SIR JOHN SOANE'S MUSEUM OPENING UP THE SOANE

GENERAL DRWG 506MP/GA001D  
ARRANGEMENT SCALE 1:100 @ A3  
PROPOSED BASEMENT DATE JULY 2009  
PLAN

**JULIAN HARRAP**  
ARCHITECTS

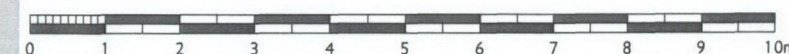
95 KINGSLAND ROAD LONDON E2 8AG  
PHONE 020 7729 5111 FAX 020 7739 8306





# PRINCIPAL WORKS: -

- ① Soane Gallery to be removed from this room. New Temporary exhibition gallery to be established in first floor front and rear rooms of No. 12.
- ② Front door of No. 12 reopened to allow visitors access to new Reception.
- ③ Ground floor front room and entrance hall of No. 12 redecorated to Soane's original decorative scheme, rooms now used as Reception, Cloakroom and Shop.
- ④ Soane Ante Room to be restored to Soane's layout in 1837 and works of art put back.
- ⑤ Wild Ante Room closed on its north side and new opening formed into the New Link Passage. Moorish joinery and mahogany cabinets to be re-configured as necessary to establish the proposed arrangement.
- ⑥ New curved link passage built in the north-east corner of New Court in position of Soane's former link.
- ⑦ New lift serving all floors in Nos. 12 & 13 from Basement up to and including Second Floor. Reposition opening to the Wild Ante Room, establish new opening into the Breakfast Room, block up doorway to the No.12 staircase hall- leaving door closed but in position.
- ⑧ Interpretation Room formed within the Wild interior of the New Picture Room (see Caruso St John's drawings).
- ⑨ Apollo Recess west wall rebuilt with bookcases as designed by Soane. Centre bookcase to be recreated as a pair of mahogany doors with mirror plate at high-level, to match Soane's original joinery in this area.
- ⑩ Reposition bookcase currently in the north recess of the Soane Ante Room to the north wall of the re-arranged Wild Ante Room.
- ⑪ For details of shop fittings and cloakroom 'wardrobe' see Caruso St John's drawings.
- ⑫ New platform lift in the front area of No. 12, to bring disabled people down from pavement level. Platform lift to be used for emergency escape. New gate to be sensitively formed in the existing railing to the front area and the Portland stone kerb locally lowered to allow level access to the platform lift.
- ⑬ No. 12 cantilevered stone staircase repaired as Structural Engineer's drawing.



SCALE

Rev D: Nov 2009: Minor amendments made.  
Rev C: Nov 2009: New Court Link design amended.  
Rev B: Nov 2009: Drawings updated  
Rev A: Oct 2009: Drawings updated

NB: This drawing was previously drawing no. 506MP/GA008E in the Masterplan Core Project.

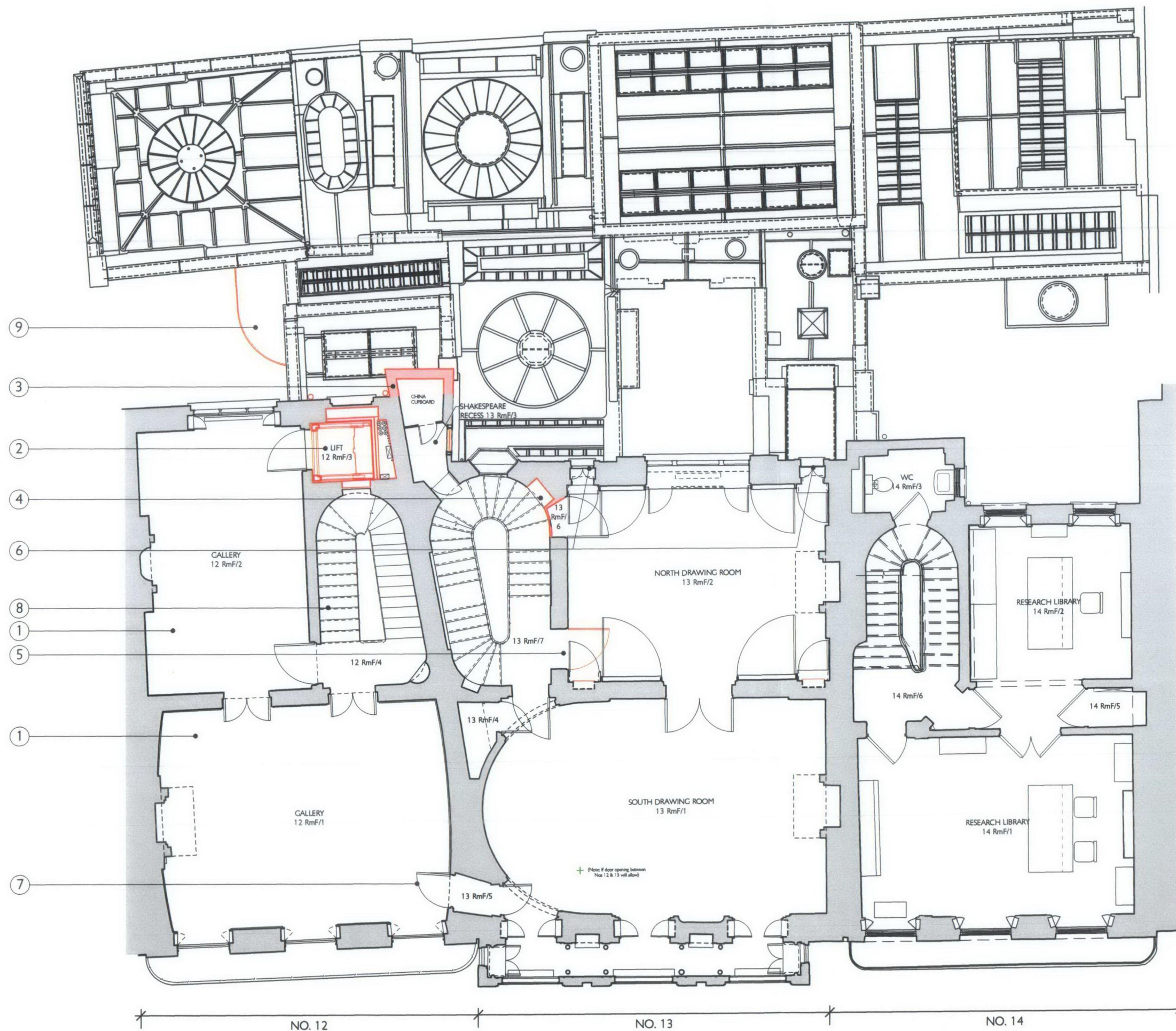
## SIR JOHN SOANE'S MUSEUM OPENING UP THE SOANE

GENERAL DRWG 506MP2/GA002D  
ARRANGEMENT SCALE 1:100 @ A3  
PROPOSED GROUND DATE JUL. 2009  
FLOOR PLAN

**JULIAN HARRAP**  
ARCHITECTS

95 KINGSLAND ROAD LONDON E2 8AG  
PHONE 020 7729 5111 FAX 020 7739 8306





# PRINCIPAL WORKS: -

- ① New Temporary exhibition gallery to be established in the front and rear rooms of No. 12 and interiors repaired. Rooms to be redecorated to Soane's decorative scheme, as defined in the paint analysis report. For details of the fit out of the Front and Rear Gallery Rooms refer to Caruso St John's drawings.
- ② New lift serving all floors in Nos. 12 & 13 from Basement up to and including Second Floor.
- ③ North Wall of the Shakespeare Recess's reconstructed on original line, supported on a new light-weight steel structure, clad externally in second-hand plum stock bricks. Glass in the modern east window to be replaced with the historic stained glass, currently held in the Museum store.
- ④ No. 13 Stair niche put back to original form.
- ⑤ North Drawing Room west door re-opened and south wall upper bookcase doors removed.
- ⑥ Glass in the north Drawing Room windows to be replaced with ruby and diaper glass to Soane's original design.
- ⑦ Existing inter-connecting door to be incorporated into Caruso St John's design for the modern Gallery fittings.
- ⑧ No. 12 cantilevered stone staircase repaired as Structural Engineer's drawing.
- ⑨ New curved link passage in the north-east corner of the New Court to have a flat lead roof.

Rev D: Dec 2009: Works to Wild Ante Room rooflight omitted.  
 Rev C: Nov 2009: Shakespeare Recess amended  
 Rev B: Oct 2009: Item 7 omitted.  
 Rev A: Oct 2009: Drawings updated

NB: This drawing was previous drawing no. 506MP/009D of the Masterplan Core Project.

## SIR JOHN SOANE'S MUSEUM OPENING UP THE SOANE

GENERAL DRWG 506MP2/GA003D  
 ARRANGEMENT SCALE 1:100 @ A3  
 PROPOSED FIRST DATE JUL. 2009  
 FLOOR PLAN

**JULIANHARRAP**  
 ARCHITECTS

95 KINGSLAND ROAD LONDON E2 8AG  
 PHONE 020 7729 5111 FAX 020 7739 8306