

G-SKY GREEN WALL PANELS

PLAN / SECTION DETAILS FOR TYPICAL WALL



#208 669 RIDLEY PLACE
DELTA, BC V3M 6Y9
604-708-0611 ph 604-357-1315 fax
www.g-sky.com

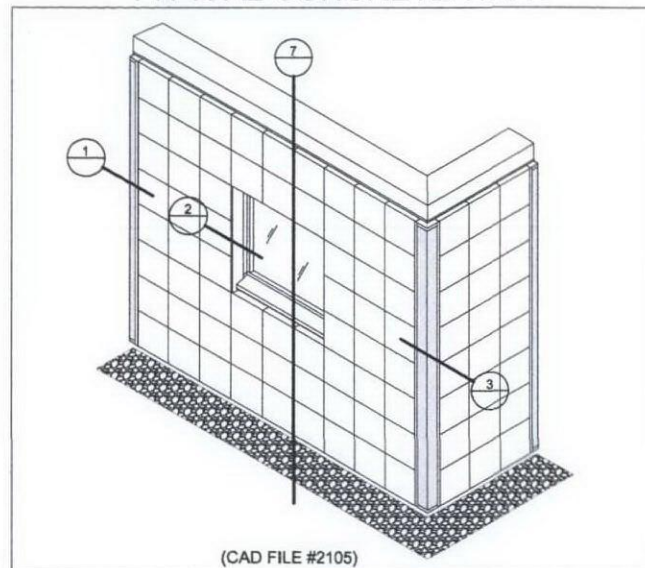
DATE: FEB 7, 2007

WALL MUST SUPPORT SATURATED GREEN WALL PANEL AND FRAME WEIGHT OF 30 LB/SQ.FT.
WATERPROOFING BY OTHERS

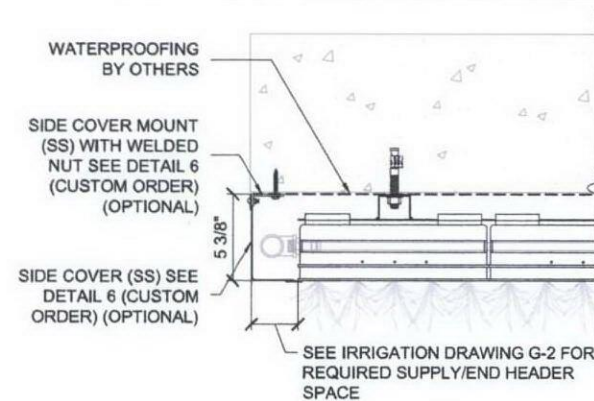
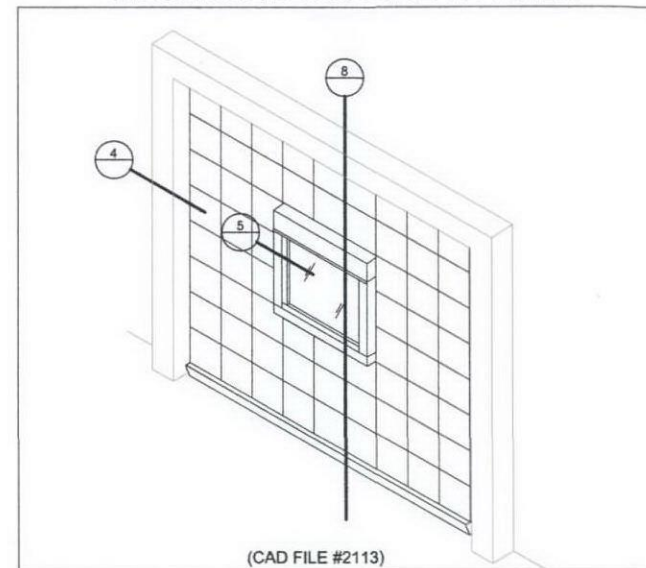
DRAWING #

G-4

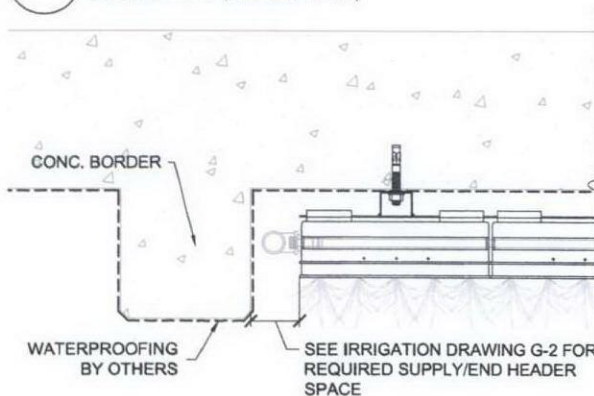
TYPICAL CONCRETE WALL



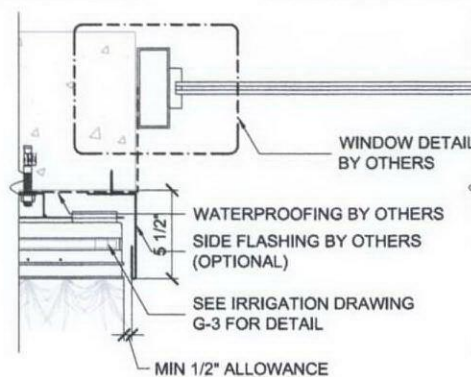
RECESSED CONCRETE WALL



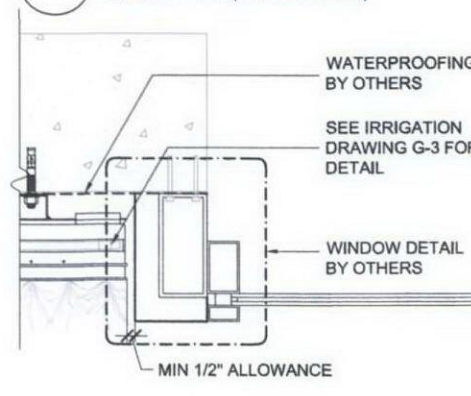
1 EDGE DETAIL
SCALE 1" = 1'-0" (CAD FILE #2106)



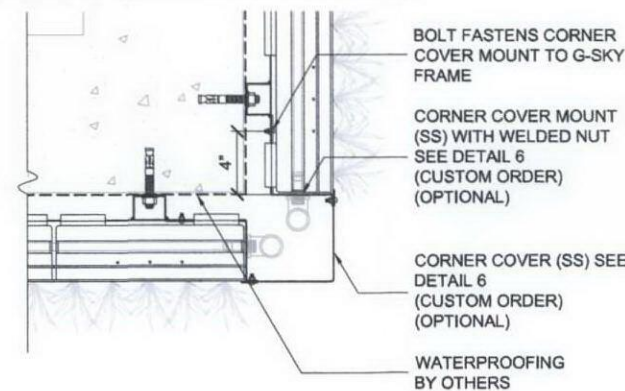
4 EDGE BORDER DETAIL
SCALE 1" = 1'-0" (CAD FILE #2114)



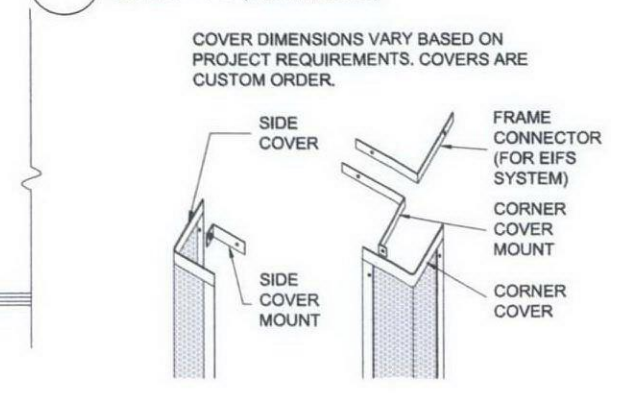
2 WINDOW SIDE DETAIL
SCALE 1" = 1'-0" (CAD FILE #2107)



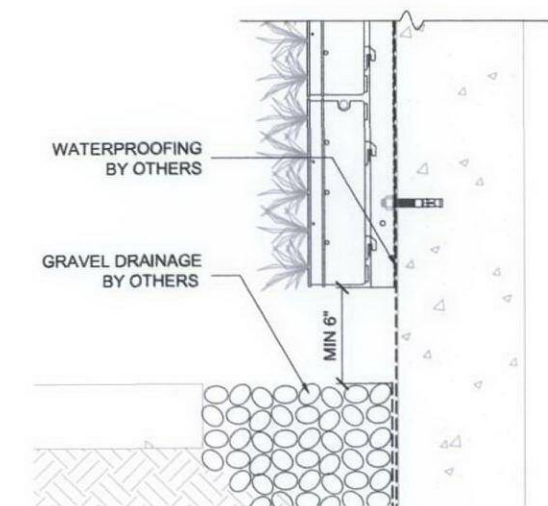
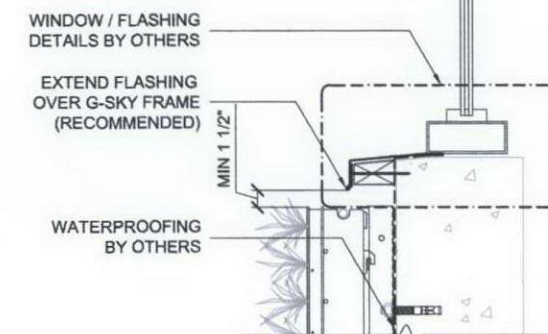
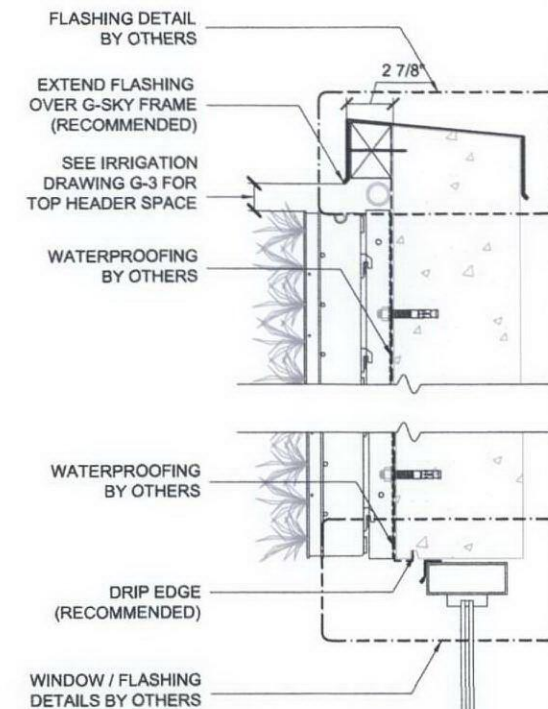
5 WINDOW SIDE DETAIL 2
SCALE 1" = 1'-0" (CAD FILE #2115)



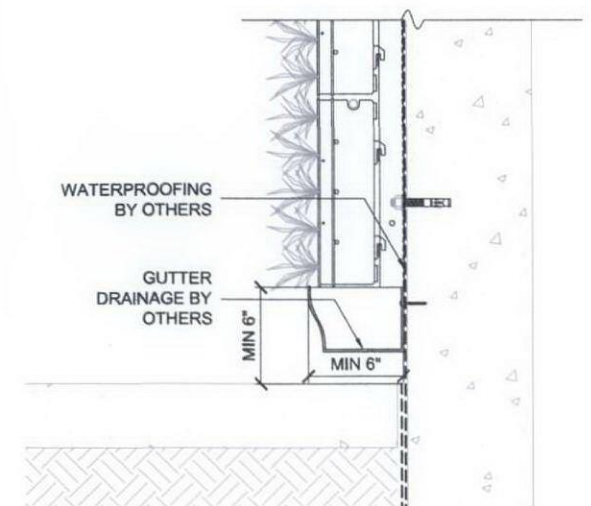
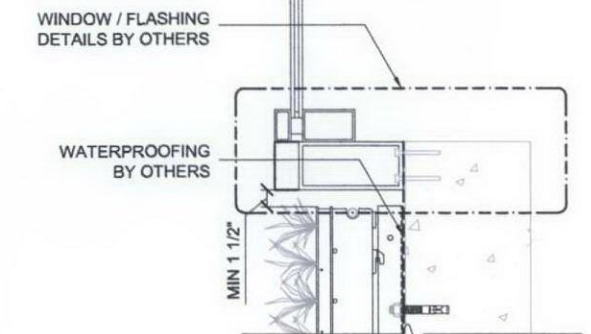
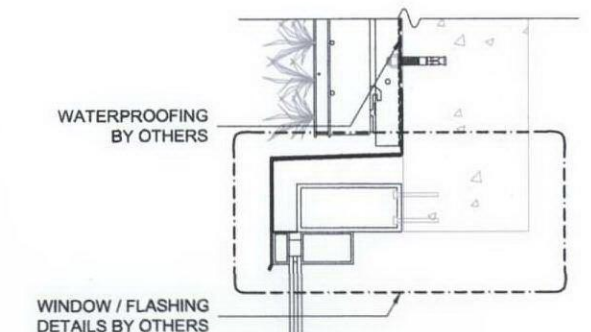
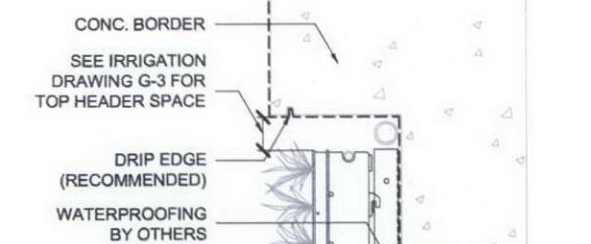
3 CORNER DETAIL
SCALE 1" = 1'-0" (CAD FILE #2108)



6 COVER DETAILS
SCALE 3/4" = 1'-0" (CAD FILE #1207)



7 TYPICAL WALL SECTION DETAIL
SCALE 1" = 1'-0" (CAD FILE #2109,2110,2111,2112)



8 RECESSED WALL SECTION DETAIL
SCALE 1" = 1'-0" (CAD FILE #2116,2117,2118,2119)