

# G-SKY GREEN WALL PANELS

## IRRIGATION DESIGN WITH OPENINGS



#208 669 RIDLEY PLACE  
DELTA, BC V3M 6Y9  
604-708-0611 ph 604-357-1315 fax  
www.g-sky.com

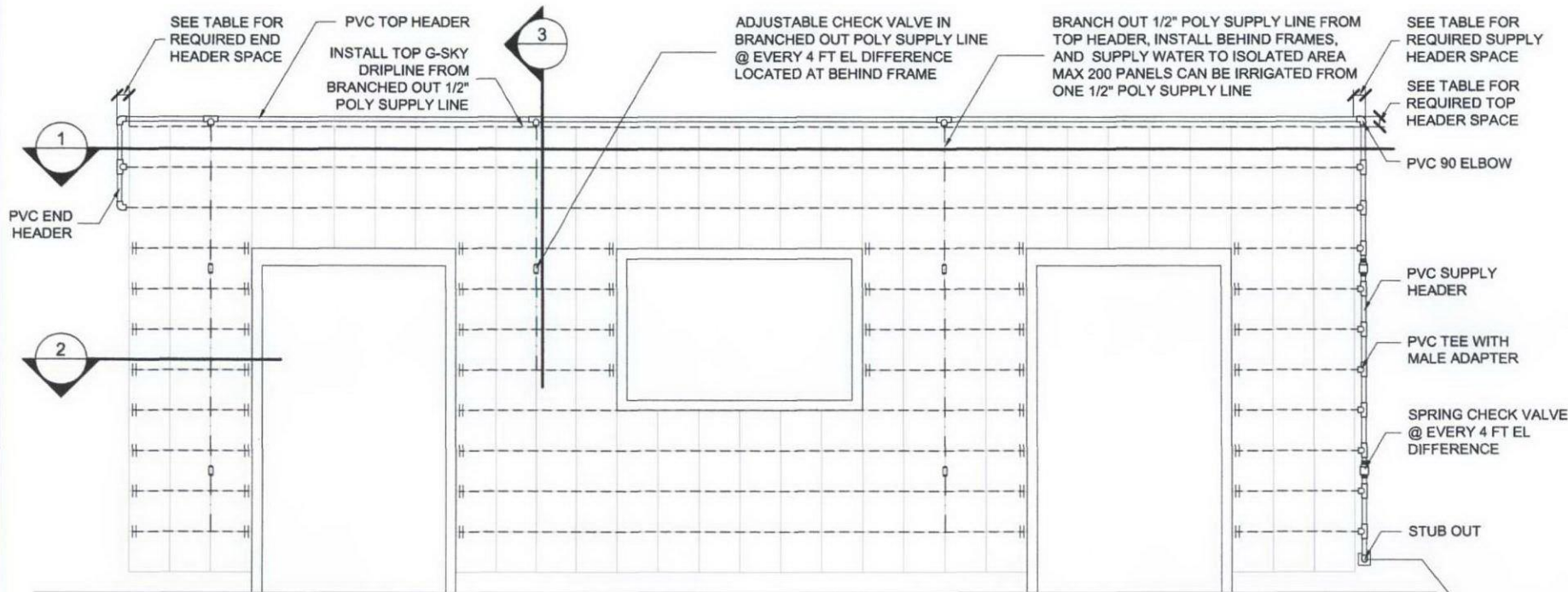
DATE: FEB 7, 2007

DRAWING #

G-3

WALL MUST SUPPORT SATURATED GREEN WALL PANEL AND FRAME WEIGHT OF 30 LB/SQ.FT.  
WATERPROOFING BY OTHERS  
MAIN WATER SUPPLY LINE BY OTHERS  
AN INDEPENDENT MAIN WATER SUPPLY LINE AND 110V POWER OUTLET ARE REQUIRED

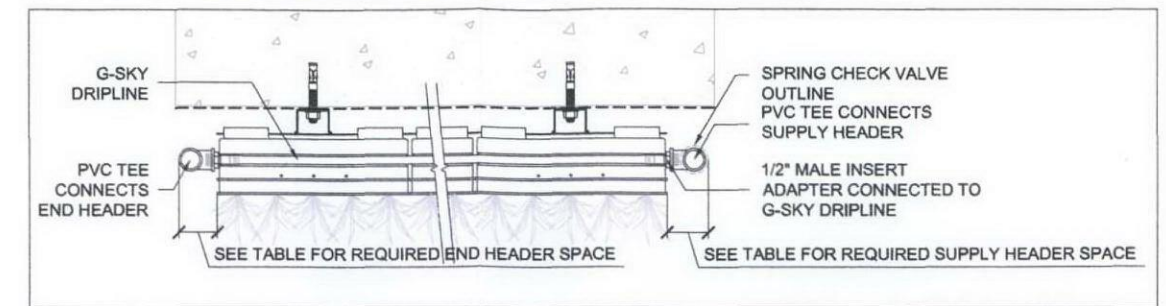
### FRONT VIEW FOR GREEN WALL PANELS WITH OPENINGS



- 1/2\"/>

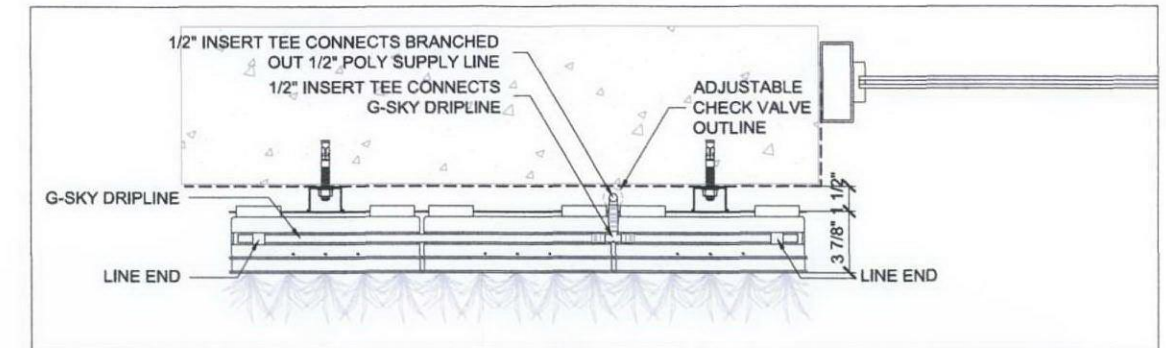
SCALE: 1/4\"/>

### DETAIL 1 - SUPPLY / END HEADERS PLAN SECTION



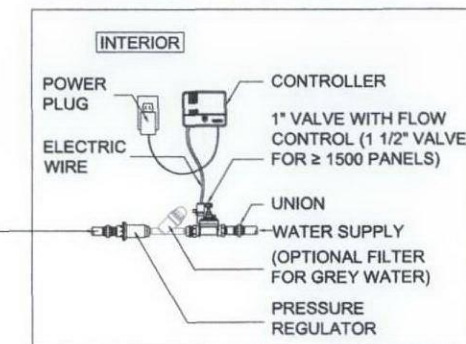
SCALE: 1\"/>

### DETAIL 2 - BRANCHED OUT 1/2\"/>



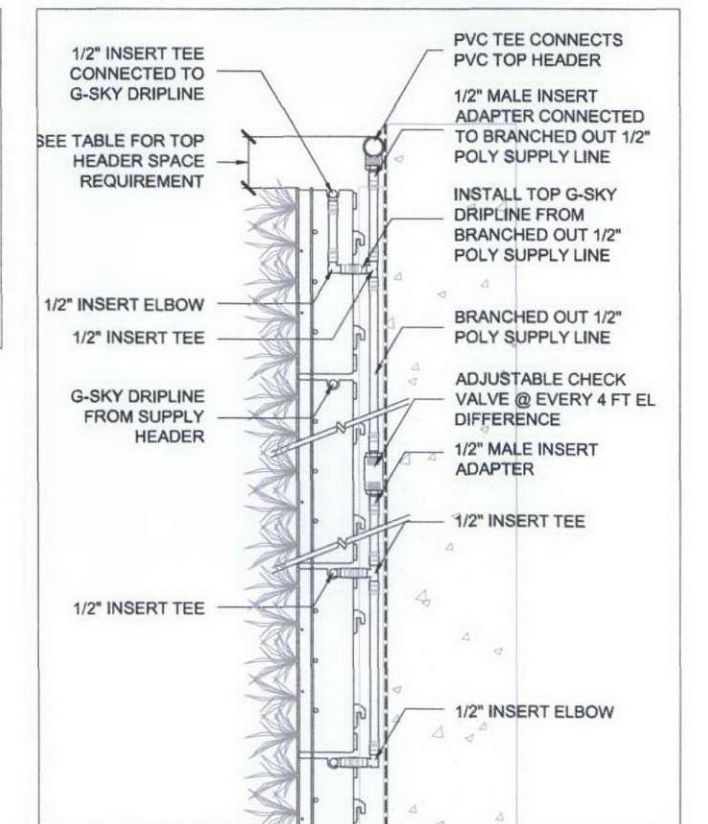
SCALE: 1\"/>

### IRRIGATION MAIN CONTROLLER ASSEMBLY



SCALE: 1/2\"/>

### DETAIL 3 - BRANCHED OUT 1/2\"/>



SCALE: 1\"/>

### IRRIGATION DESIGN / REQUIREMENTS TABLE FOR GREEN WALL PANELS WITH OPENINGS

WALL SIZE (PANEL)	PANEL LAYOUT (PANEL x PANEL)	MAX LENGTH (PANEL)	MAX HEIGHT (PANEL)	MIN WATER PRESSURE (PSI)	MIN WATER FLOW (GPM)	SUPPLY HEADER LINE SIZE	STUB OUT SIZE *2	REQUIRED SUPPLY HEADER *3 SPACE	REQUIRED END HEADER *3 SPACE	REQUIRED TOP HEADER *3 SPACE
12	3 x 4	-	-	20	0.2	1/2" POLY	1/2"	-	-	≥ 1"
50	50 x 1	-	10	30	0.6	1/2" POLY	1/2"	-	-	≥ 1"
	5 x 10	-	10	30	0.6	1/2" POLY	1/2"	-	-	≥ 1"
150	150 x 1	-	20	35	1.6	1/2" POLY	1/2"	-	-	≥ 1"
	10 x 15	-	20	35	1.6	1/2" POLY	1/2"	-	-	≥ 1"
250	250 x 1	250	20	35	2.6	1/2" PVC	3/4"	≥ 2 1/2"	≥ 2"	≥ 2"
	25 x 10	250	20	35	2.6	1/2" PVC	3/4"	≥ 2 1/2"	≥ 2"	≥ 2"
500	250 x 2	250	50	40	5.2	3/4" PVC	1"	≥ 2 3/4"	≥ 2 1/2"	≥ 2 1/2"
	10 x 50	250	50	45	5.2	3/4" PVC	1"	≥ 2 3/4"	≥ 2 1/2"	≥ 2 1/2"
750	250 x 3	250	50	40	7.8	3/4" PVC	1"	≥ 2 3/4"	≥ 3"	≥ 3"
	15 x 50	250	50	45	7.8	3/4" PVC	1"	≥ 2 3/4"	≥ 3"	≥ 3"
1000	250 x 4	250	50	45	10.4	1" PVC	1"	≥ 3 1/2"	≥ 3"	≥ 3"
	20 x 50	250	50	50	10.4	1" PVC	1"	≥ 3 1/2"	≥ 3"	≥ 3"
2000	250 x 8	250	50	45	20.8	1 1/4" PVC	1 1/2"	≥ 4 1/2"	≥ 3 1/2"	≥ 3 1/2"
	40 x 50	250	50	50	20.8	1 1/4" PVC	1 1/2"	≥ 4 1/2"	≥ 3 1/2"	≥ 3 1/2"

\*1 THIS TABLE APPLIES FOR GREEN WALL WITH OPENINGS. SEE G-2 FOR GREEN WALLS WITHOUT OPENING DESIGN.

\*2 THIS TABLE ASSUMES THAT THE STUB OUT IS LOCATED AT THE BOTTOM OF THE GREEN WALL.

\*3 SUPPLIES HEADER: SUPPLY WATER VERTICALLY FROM STUB OUT; END HEADER: INCREASES WATER CIRCULATION; TOP HEADER: SUPPLIES WATER TO POLY SUPPLY LINE FOR ISOLATED ZONES.

\* FOR LESS THAN 150 GREEN WALL PANELS, THE SUPPLY HEADER MAY BE DESIGNED TO FIT BEHIND THE GREEN WALL.

\* 200 PANELS MAX. CAN BE IRRIGATED BY A BRANCHED OUT 1/2\"/>

\* THE IRRIGATION SYSTEM IS DESIGNED FOR CLEAN (CONTAMINANT FREE) WATER. CONSULT G-SKY FOR GREY WATER FILTER REQUIREMENTS.

\* BATTERY OPERATED LOW FLOW CONTROLLER (SEE G-2) MAY BE USED FOR LESS THAN 150 GREEN WALL PANELS.