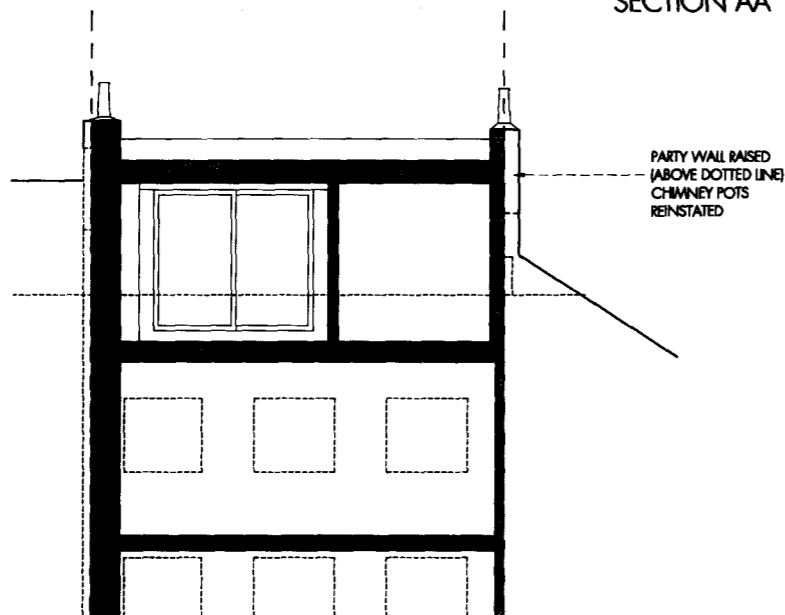
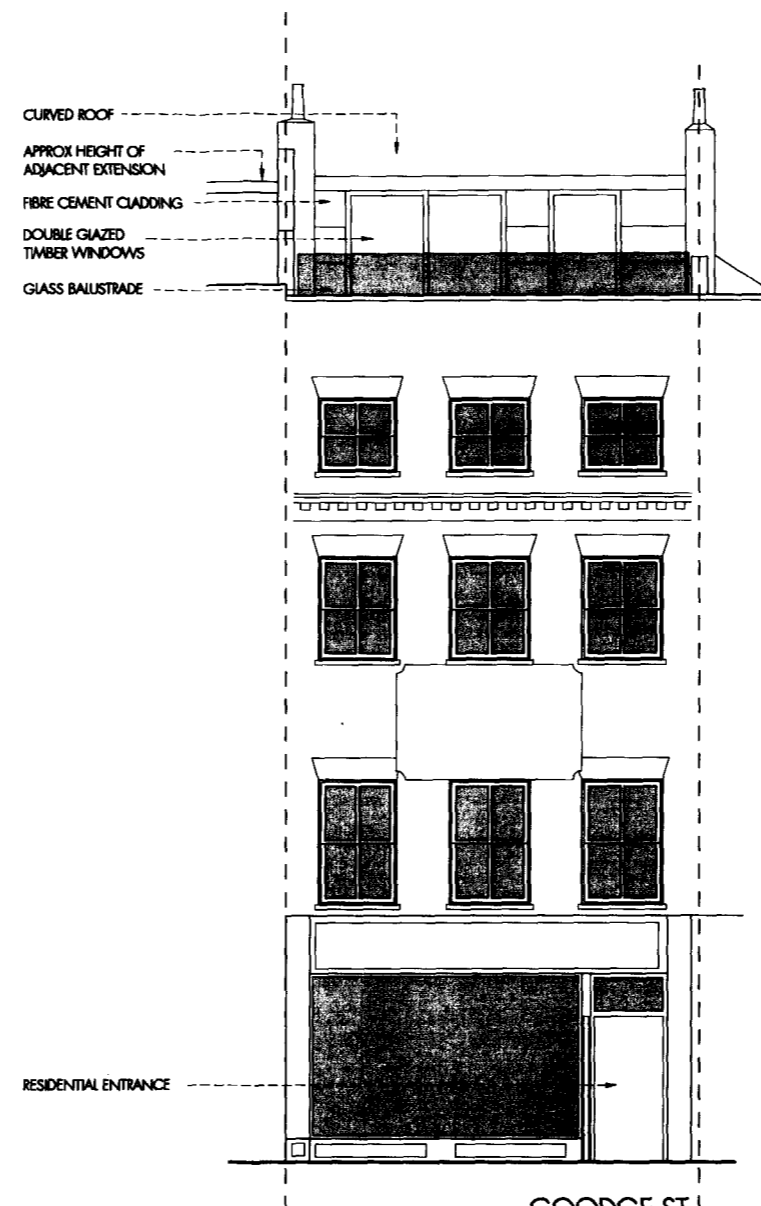


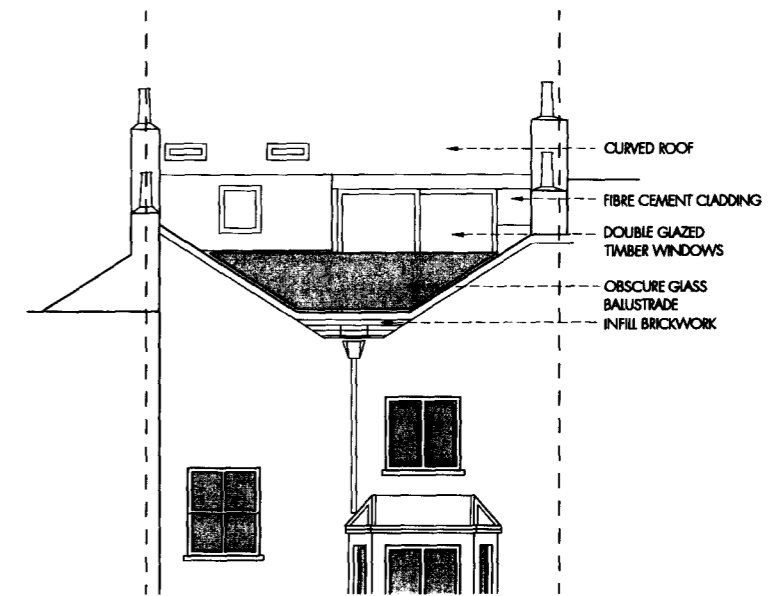
SECTION AA



SECTION BB

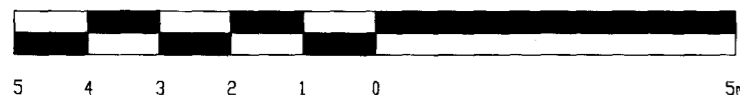


GOODGE ST
ELEVATION



PARTIAL REAR
ELEVATION

RECEIVED
15 DEC 2009



REV A 15.12.09 SCALE OF DRAWINGS
CHANGED TO 1:50

tasou
associates

architects + structural engineers

4 Amwell Street, London. EC1R 1UG T:020 7713 7070 F:020 7713 7071 E:tasou@tasou.co.uk

project	37 GOODGE STREET
draw title	PROPOSED SECTIONS AND ELEVATIONS
job no.	1271
date	NOVEMBER 2009
draw no.	PP.02
scale @ A1	1:50
rev.	A