

[illegible]

[illegible]

[illegible]



© This drawing is copyright. Figured dimensions only to be taken from this drawing. All dimensions to be checked on site. Architects to be informed immediately of any discrepancies before work proceeds.

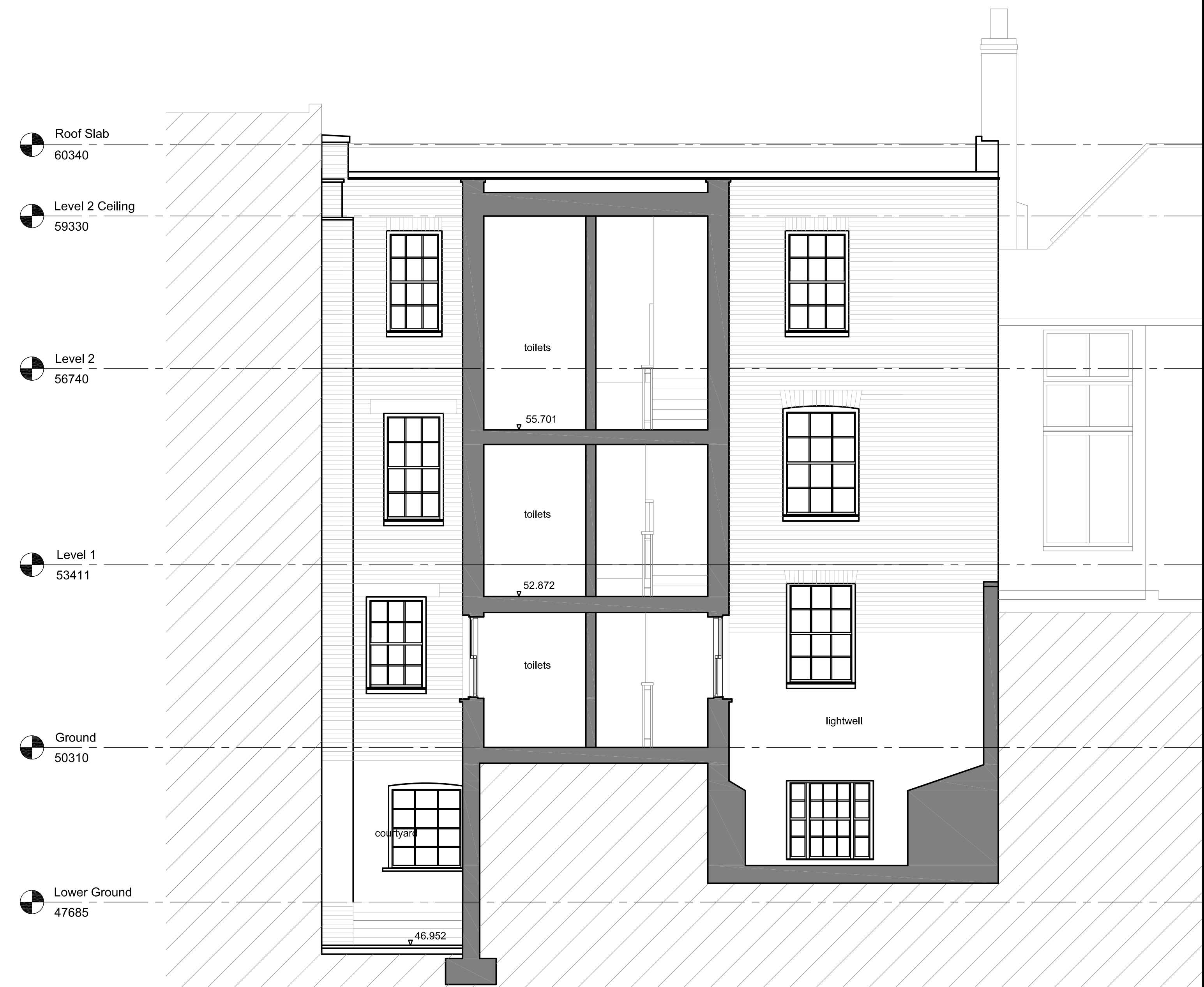
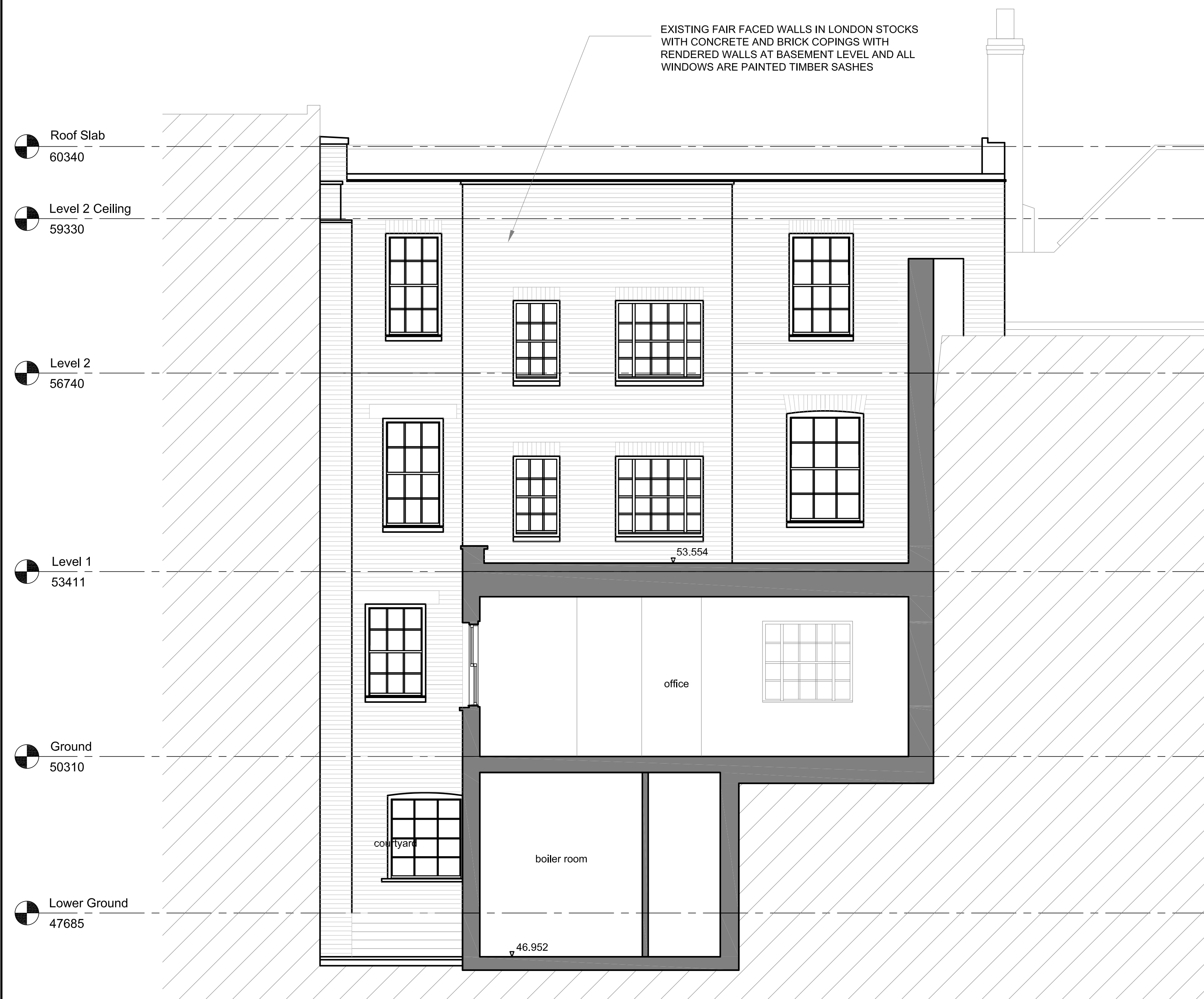


NOTES

[illegible]

St Kevin's Female School Connaught House Teah Road DUBLIN 1 t: +353 1 478 7500 f: +353 1 478 7500 e: dublinsign@grayswallace.com	Connaught House Teah Road DUBLIN 1 t: +353 91 763 890 f: +353 91 763 890 e: galwaydesign@grayswallace.com	Finlex House 19 Golden Square GALWAY t: +44 207 437 0982 f: +44 207 287 3563 e: londonesign@grayswallace.com	DOUGLAS WALLACE ARCHITECTS, DESIGNERS, PROJECT MANAGERS www.douglaswallace.com
CLIENT NAME DOUGLAS WALLACE			
PROJECT NAME 165 GRAY'S INN ROAD, LONDON WC1X 8UE			
DRAWING TITLE EXISTING SECTION A-A			
PROJECT NO L5198	DRAWING NO P - 010	REV. A	SCALE(S) 1:50 @ A1
		STATUS FOR PLANNING	DATE DRAWN 15.10.06
		DRAWN BY PJW	CHECKED BY

[illegible]



NOTES

[illegible]

St Kevin's Female School, Convent House 1 Grantham Street DUBLIN 1 t: +3531 4787650 e: +3531 4787650			Convent Road GALWAY 9 t: +3531 7838986 e: galwaydesign@dooglaswallace.com			Finter House 19 Golden Square LONDON W1F 8HD t: +44 207 437 0862 e: londonstudio@dooglaswallace.com			DOUGLAS WALLACE ARCHITECTS · DESIGNERS · PROJECT MANAGERS www.dooglaswallace.com		
CLIENT NAME			DOUGLAS WALLACE								
PROJECT NAME			165 GRAY'S INN ROAD, LONDON WC1X 8UE								
DRAWING TITLE			EXISTING SECTIONS C-C & D-D								
PROJECT NO.	DRAWING NO.	REV.	SCALE(S)			STATUS		DATE DRAWN	DRAWN BY	CHECKED BY	
3867	P-012	A	1:50 @ A1			FOR PLANNING		06.09.07	RJ		
© This drawing is copyright. All drawings are to be taken from this drawing. All dimensions to be checked on site. Architects to be informed immediately of any discrepancies before work proceeds.											



NOTE:

EXISTING RENDERED PANELS TO THE WINDOW AND SURROUNDINGS TO BE MADE GOOD AND RE-PAINTED TO MATCH EXISTING

ALL EXISTING BOX SASH TIMBER WINDOWS TO BE RE-PAINTED

ALL THE EXISTING BRICK FACADE TO BE CLEANED TO REMOVE MOULD AND TRAFFIC GRIME

NOTES

																																																																																																																																																																																																																																																																																																																																																																																																																																																																																																																																																																																																																																																																																																																																																																																																																																																																																																																																																																																																																																																																																																																																																																																																																																																																																																																																																																																																																																																																																																																																																																																																																																							</
--	--	--	--	--	--	--	--	--	--	--	--	--	--	--	--	--	--	--	--	--	--	--	--	--	--	--	--	--	--	--	--	--	--	--	--	--	--	--	--	--	--	--	--	--	--	--	--	--	--	--	--	--	--	--	--	--	--	--	--	--	--	--	--	--	--	--	--	--	--	--	--	--	--	--	--	--	--	--	--	--	--	--	--	--	--	--	--	--	--	--	--	--	--	--	--	--	--	--	--	--	--	--	--	--	--	--	--	--	--	--	--	--	--	--	--	--	--	--	--	--	--	--	--	--	--	--	--	--	--	--	--	--	--	--	--	--	--	--	--	--	--	--	--	--	--	--	--	--	--	--	--	--	--	--	--	--	--	--	--	--	--	--	--	--	--	--	--	--	--	--	--	--	--	--	--	--	--	--	--	--	--	--	--	--	--	--	--	--	--	--	--	--	--	--	--	--	--	--	--	--	--	--	--	--	--	--	--	--	--	--	--	--	--	--	--	--	--	--	--	--	--	--	--	--	--	--	--	--	--	--	--	--	--	--	--	--	--	--	--	--	--	--	--	--	--	--	--	--	--	--	--	--	--	--	--	--	--	--	--	--	--	--	--	--	--	--	--	--	--	--	--	--	--	--	--	--	--	--	--	--	--	--	--	--	--	--	--	--	--	--	--	--	--	--	--	--	--	--	--	--	--	--	--	--	--	--	--	--	--	--	--	--	--	--	--	--	--	--	--	--	--	--	--	--	--	--	--	--	--	--	--	--	--	--	--	--	--	--	--	--	--	--	--	--	--	--	--	--	--	--	--	--	--	--	--	--	--	--	--	--	--	--	--	--	--	--	--	--	--	--	--	--	--	--	--	--	--	--	--	--	--	--	--	--	--	--	--	--	--	--	--	--	--	--	--	--	--	--	--	--	--	--	--	--	--	--	--	--	--	--	--	--	--	--	--	--	--	--	--	--	--	--	--	--	--	--	--	--	--	--	--	--	--	--	--	--	--	--	--	--	--	--	--	--	--	--	--	--	--	--	--	--	--	--	--	--	--	--	--	--	--	--	--	--	--	--	--	--	--	--	--	--	--	--	--	--	--	--	--	--	--	--	--	--	--	--	--	--	--	--	--	--	--	--	--	--	--	--	--	--	--	--	--	--	--	--	--	--	--	--	--	--	--	--	--	--	--	--	--	--	--	--	--	--	--	--	--	--	--	--	--	--	--	--	--	--	--	--	--	--	--	--	--	--	--	--	--	--	--	--	--	--	--	--	--	--	--	--	--	--	--	--	--	--	--	--	--	--	--	--	--	--	--	--	--	--	--	--	--	--	--	--	--	--	--	--	--	--	--	--	--	--	--	--	--	--	--	--	--	--	--	--	--	--	--	--	--	--	--	--	--	--	--	--	--	--	--	--	--	--	--	--	--	--	--	--	--	--	--	--	--	--	--	--	--	--	--	--	--	--	--	--	--	--	--	--	--	--	--	--	--	--	--	--	--	--	--	--	--	--	--	--	--	--	--	--	--	--	--	--	--	--	--	--	--	--	--	--	--	--	--	--	--	--	--	--	--	--	--	--	--	--	--	--	--	--	--	--	--	--	--	--	--	--	--	--	--	--	--	--	--	--	--	--	--	--	--	--	--	--	--	--	--	--	--	--	--	--	--	--	--	--	--	--	--	--	--	--	--	--	--	--	--	--	--	--	--	--	--	--	--	--	--	--	--	--	--	--	--	--	--	--	--	--	--	--	--	--	--	--	--	--	--	--	--	--	--	--	--	--	--	--	--	--	--	--	--	--	--	--	--	--	--	--	--	--	--	--	--	--	--	--	--	--	--	--	--	--	--	--	--	--	--	--	--	--	--	--	--	--	--	--	--	--	--	--	--	--	--	--	--	--	--	--	--	--	--	--	--	--	--	--	--	--	--	--	--	--	--	--	--	--	--	--	--	--	--	--	--	--	--	--	--	--	--	--	--	--	--	--	--	--	--	--	--	--	--	--	--	--	--	--	--	--	--	--	--	--	--	--	--	--	--	--	--	--	--	--	--	--	--	--	--	--	--	--	--	--	--	--	--	--	--	--	--	--	--	--	--	--	--	--	--	--	--	--	--	--	--	--	--	--	--	--	--	--	--	--	--	--	--	--	--	--	--	--	--	--	--	--	--	--	--	--	--	--	--	--	--	--	--	--	--	--	--	--	--	--	--	--	--	--	--	--	--	--	--	--	--	--	--	--	--	--	--	--	--	--	--	--	--	--	--	--	--	--	--	--	--	--	--	--	--	--	--	--	--	--	--	--	--	--	--	--	--	--	--	--	--	--	--	--	--	--	--	--	--	--	--	--	--	--	--	--	--	--	--	--	--	--	--	--	--	--	--	--	--	--	--	--	--	--	--	--	--	--	--	--	--	--	--	--	--	--	--	--	--	--	--	--	--	--	--	--	--	--	--	--	--	--	--	--	--	--	--	--	--	--	--	--	--	--	--	--	--	--	--	--	--	--	--	--	--	--	--	--	--	--	--	--	--	--	--	--	--	--	--	--	--	--	--	--	--	--	--	--	--	--	--	--	--	--	--	--	--	--	--	--	--	--	--	--	--	--	--	--	--	--	--	--	--	--	--	--	--	--	--	--	--	--	--	--	--	--	--	--	--	--	--	--	--	--	--	--	--	--	--	--	--	--	--	--	--	--	--	--	--	--	--	--	--	--	--	--	--	--	--	--	--	--	--	--	--	--	--	--	--	--	--	--	--	--	--	--	--	--	--	--	--	--	--	--	--	--	--	--	--	--	--	--	--	--	--	--	--	--	--	--	--	--	--	--	--	--	--	--	--	--	--	--	--	--	--	--	--	--	--	--	--	--	--	--	--	--	--	--	--	--	--	--	--	--	--	--	--	--	--	--	--	--	--	--	--	--	--	--	--	--	--	--	--	--	--	--	--	--	--	--	--	--	--	--	--	--	--	--	--	--	--	--	--	--	--	--	--	--	--	--	--	--	--	--	--	--	--	--	--	--	--	--	--	--	--	--	--	--	--	--	--	--	--	--	--	--	--	--	--	--	--	--	--	--	--	--	--	--	--	--	--	--	--	--	--	--	--	--	--	--	--	--	--	--	--	--	--	--	--	--	--	--	--	--	--	--	--	--	--	--	--	--	--	--	--	--	--	--	--	--	--	--	--	--	--	--	--	--	--	--	--	--	--	--	--	--	--	--	--	--	--	--	--	--	--	--	--	--	--	--	--	--	--	--	--	--	--	--	--	--	--	--	--	--	--	--	--	--	--	--	--	--	--	--	--	--	--	--	--	--	--	--	--	--	--	--	--	--	--	--	--	--	--	--	--	--	--	--	--	--	--	--	--	--	--	--	--	--	--	--	--	--	--	--	--	--	--	--	--	--	--	--	--	--	--	--	--	--	--	--	--	--	--	--	--	--	--	--	--	--	--	--	--	--	--	--	--	--	--	--	--	--	--	--	--	--	--	--	--	--	--	--	--	--	--	--	--	--	--	--	--	--	--	--	--	--	--	--	--	--	--	--	--	--	--	--	--	--	--	--	--	--	--	--	--	--	----



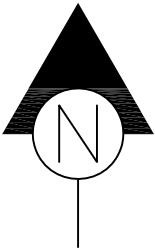
NOTES

REVISION	DATE	DESCRIPTION	A REVISION	07.08.08 DATE	Re-submitted for planning DESCRIPTION

31 Vivian's Female School		Connaught House		Fintox House	
Grantham Street		Tum Road		19 Golden Square	
DUBLIN		DUBLIN		LONDON W1F 9HD	
t: +353 1478 7590		e: galway@sigdougswallace.com		t: +44 20 7437 0882	
e: dublin@sigdougswallace.com		t: +353 91 783 890		t: +44 20 7287 3563	
		e: galwaydesign@sigdougswallace.com		e: london@sigdougswallace.com	
www.dougswallace.com					

CLIENT NAME		DOUGLAS WALLACE			
PROJECT NAME		165 GRAY'S INN ROAD, LONDON WC1X 8UE			
DRAWING TITLE		PROPOSED SOUTH ELEVATION			
PROJECT NO.	DRAWING NO.	REV.	SCALE(S)	STATUS	
3867	P - 107	A	1:50 @ A1	FOR PLANNING	
					DATE DRAWN 06.09.07
					DRAWN BY RJ
					CHECKED BY

© This drawing is copyright. Drawing dimensions only to be taken from this drawing. All dimensions to be checked on site. Architects to be informed immediately of any discrepancies before work proceeds.

[illegible]

[illegible]

St Kevin's Female School Connaught House 1 Grantham Street Tuam Road DUBLIN 8 GALWAY t: +353 1 478 7500 f: +353 91 783 890 e: +353 1 478 7500 e: +353 91 783 890 e: info@doouglaswallace.com e: info@doouglaswallace.com e: info@doouglaswallace.com			Fintex House 19 Golden Square LONDON W1D 3HD t: +44 20 437 0882 f: +44 20 287 3583 e: info@doouglaswallace.com			DOUGLAS WALLACE ARCHITECTS · DESIGNERS · PROJECT MANAGERS www.doouglaswallace.com		
CLIENT NAME DOUGLAS WALLACE			PROJECT NAME 165 GRAY'S INN ROAD, LONDON WC1X 8UE					
DRAWING TITLE SITE PHOTOS								
PROJECT NO	DRAWING NO	REV.	SCALE(S)	STATUS	DATE DRAWN	DRAWN BY	CHECKED BY	
3867	P - 1250	A	NTS	FOR PLANNING	06.09.07	RJ		
© This drawing is copyright. Permission is only to be taken from this drawing. All dimensions to be checked on site. Architects to be informed immediately of any discrepancies before work proceeds.								



NOTES



ALL THE EXISTING BRICK FACADE TO BE CLEANED
TO REMOVE MOULD AND TRAFFIC GRIME

[illegible]

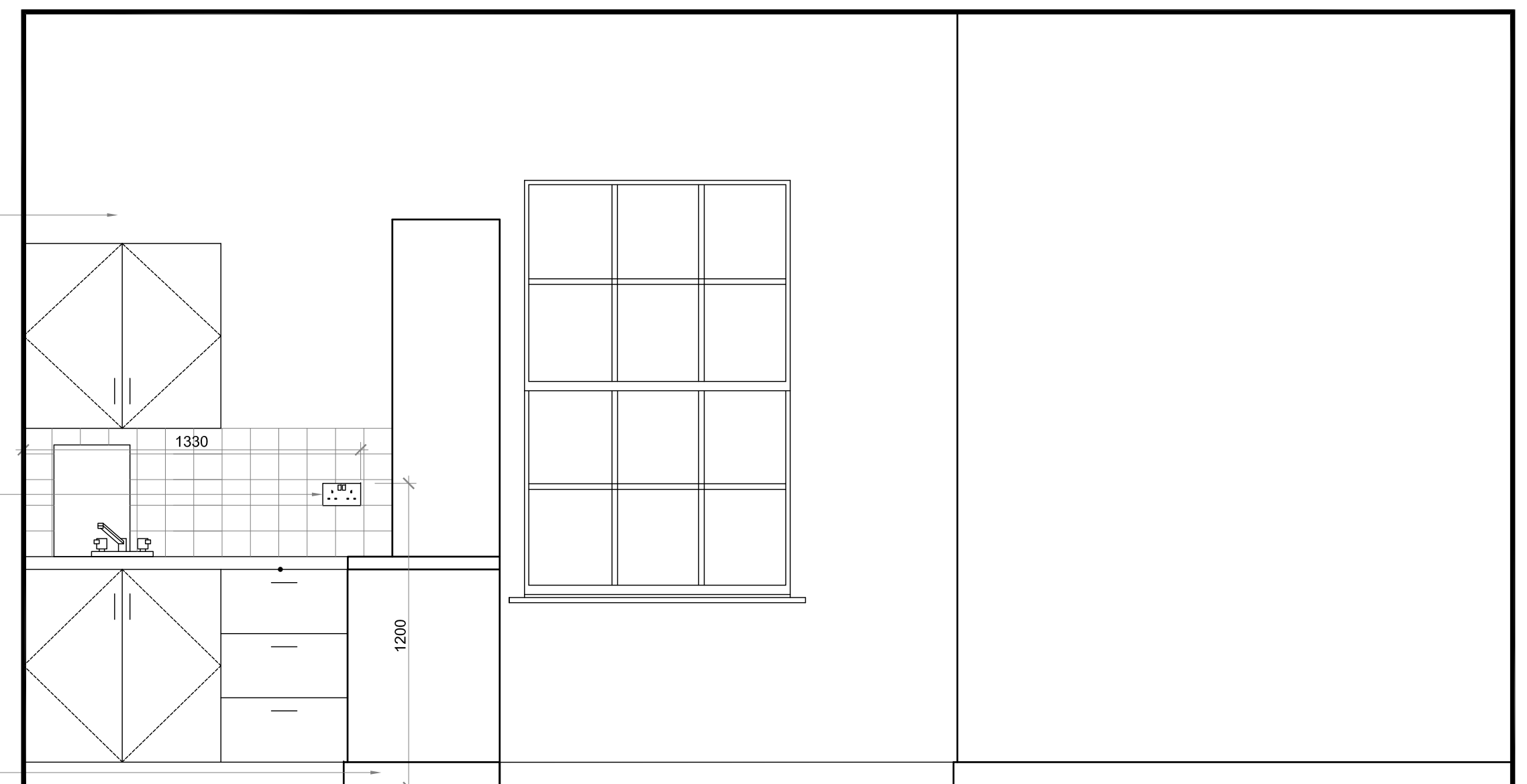
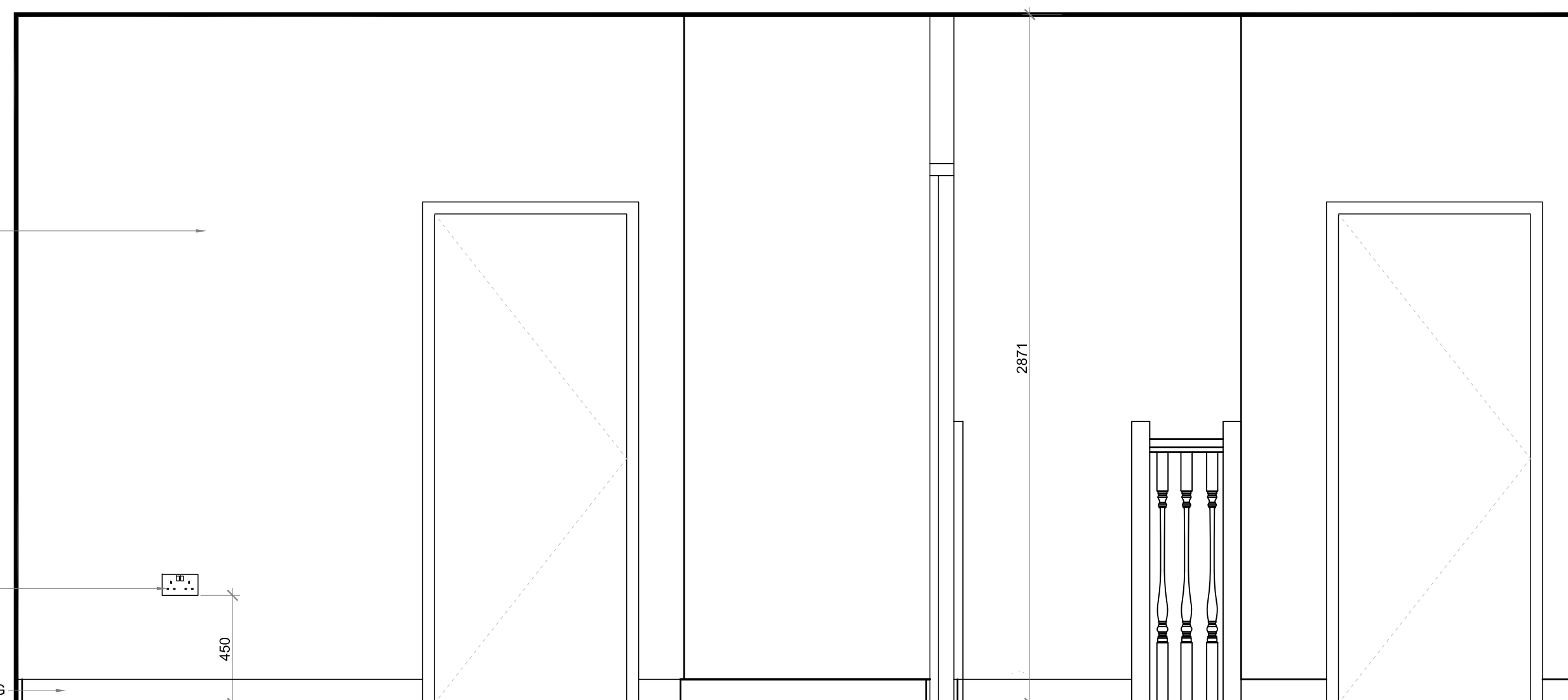
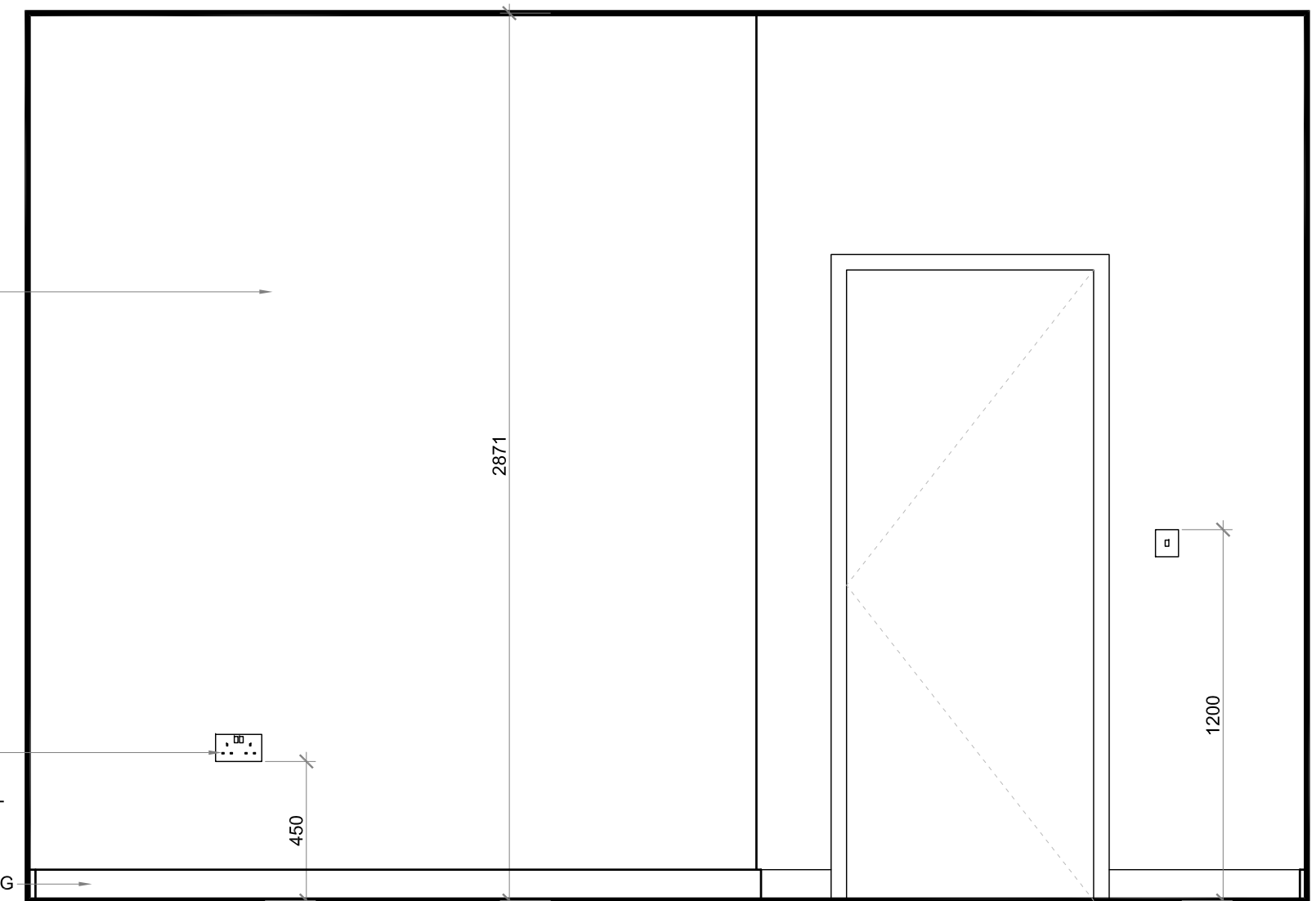
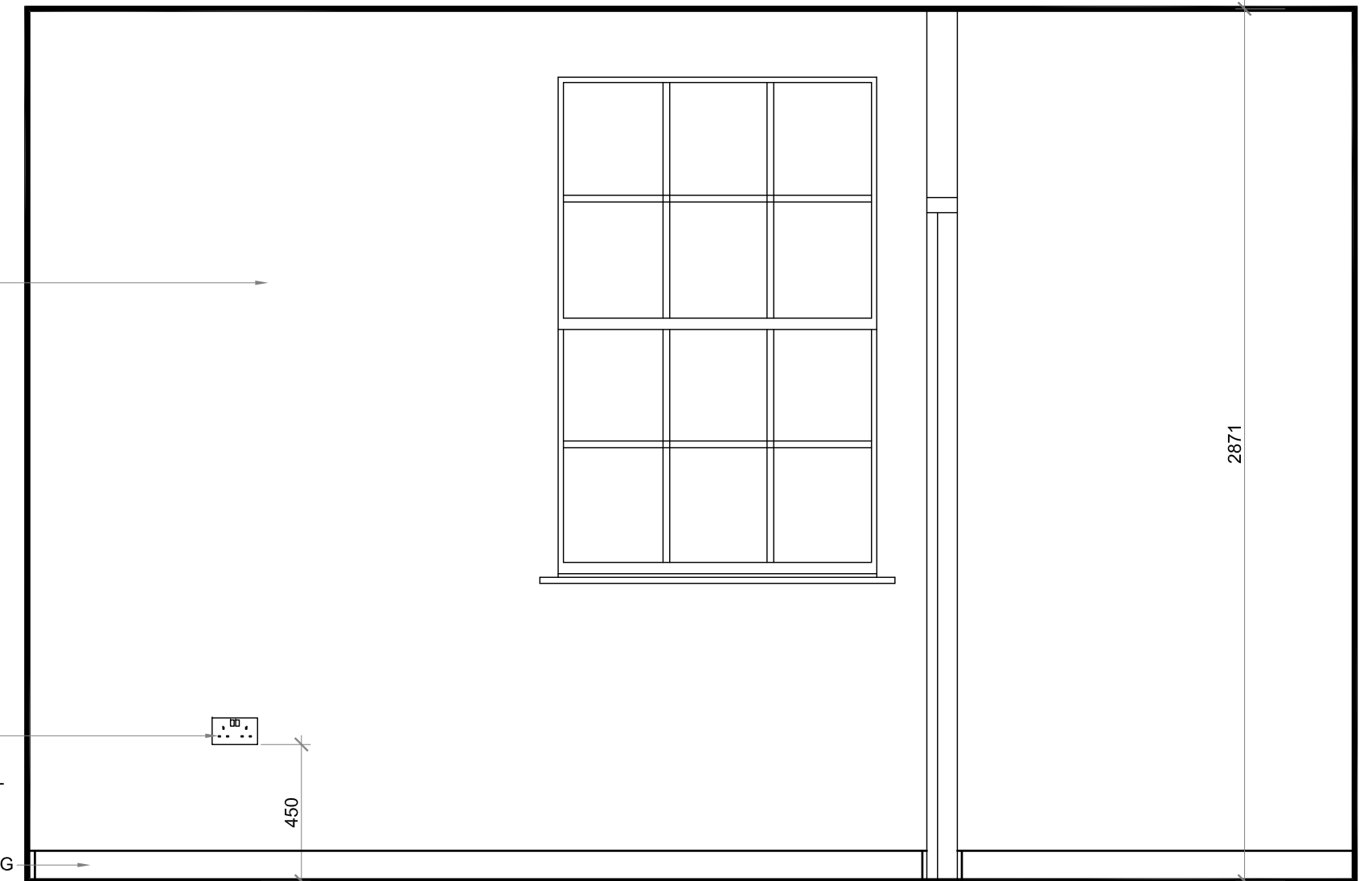
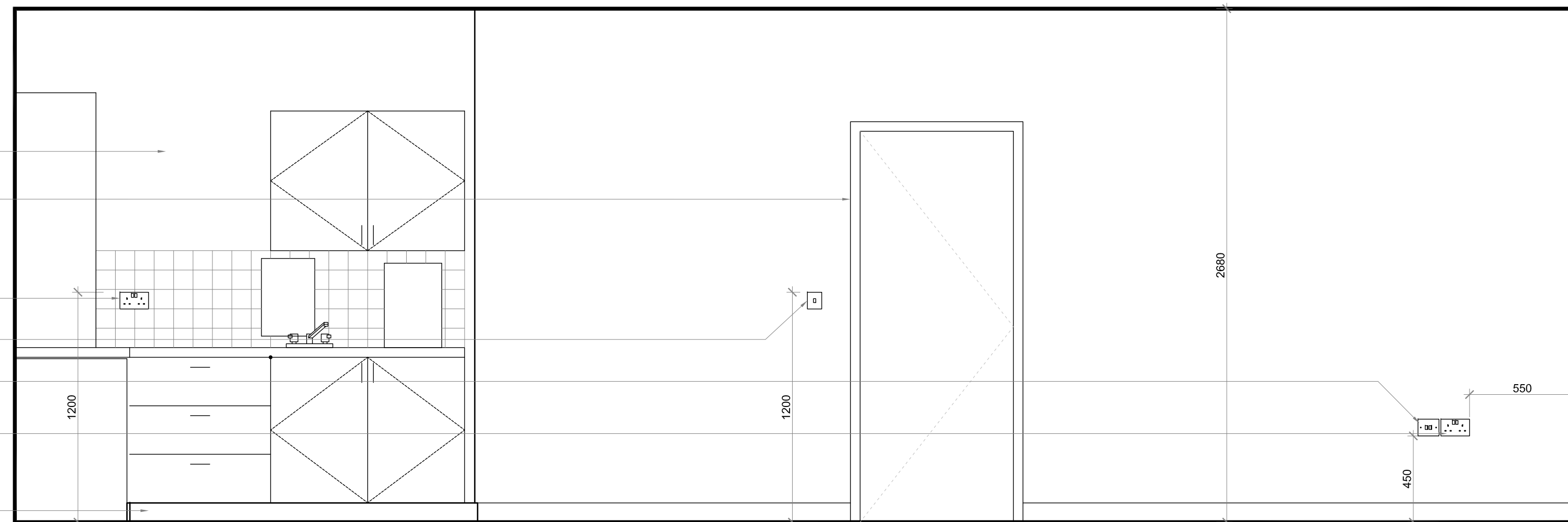


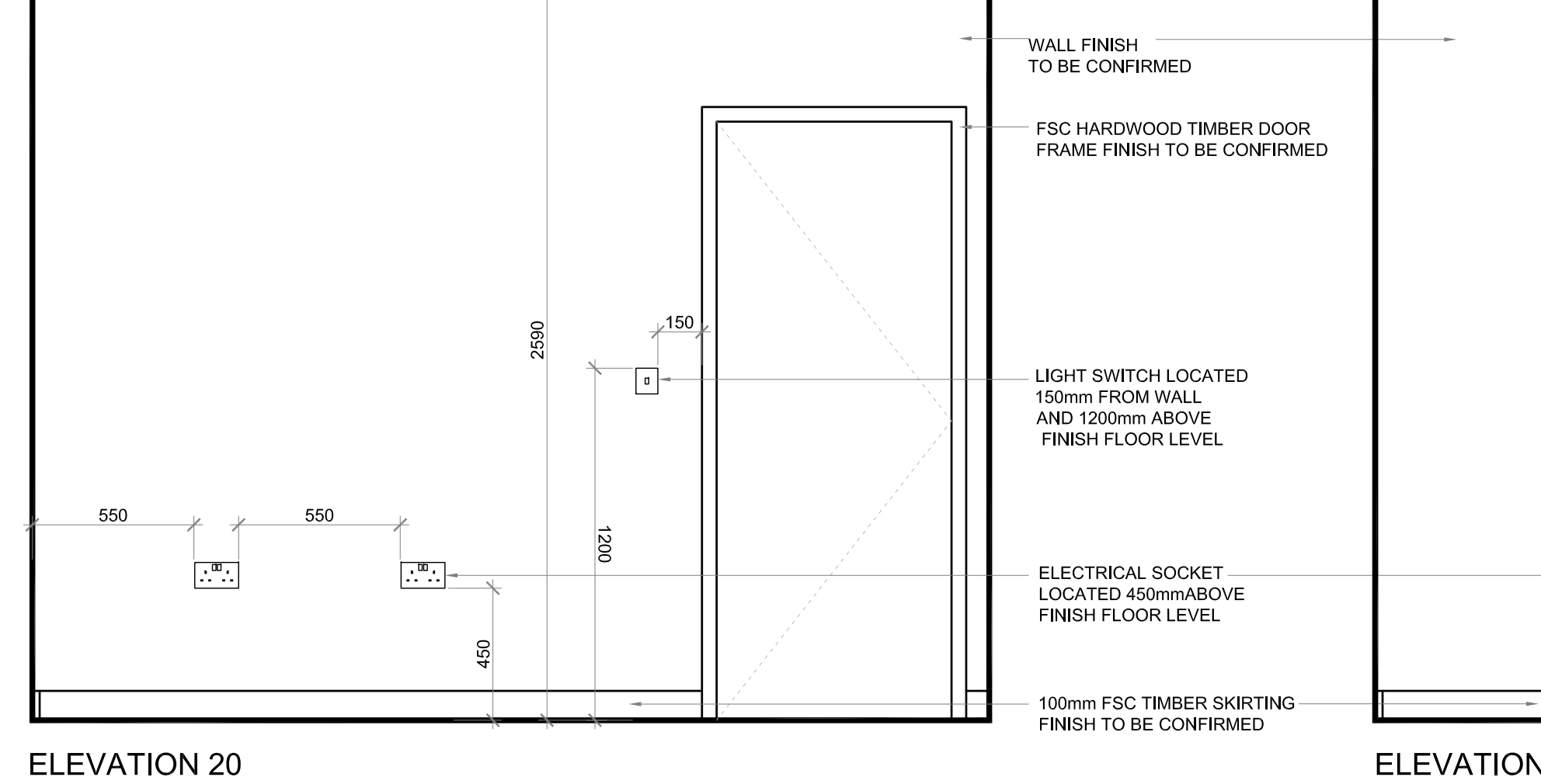
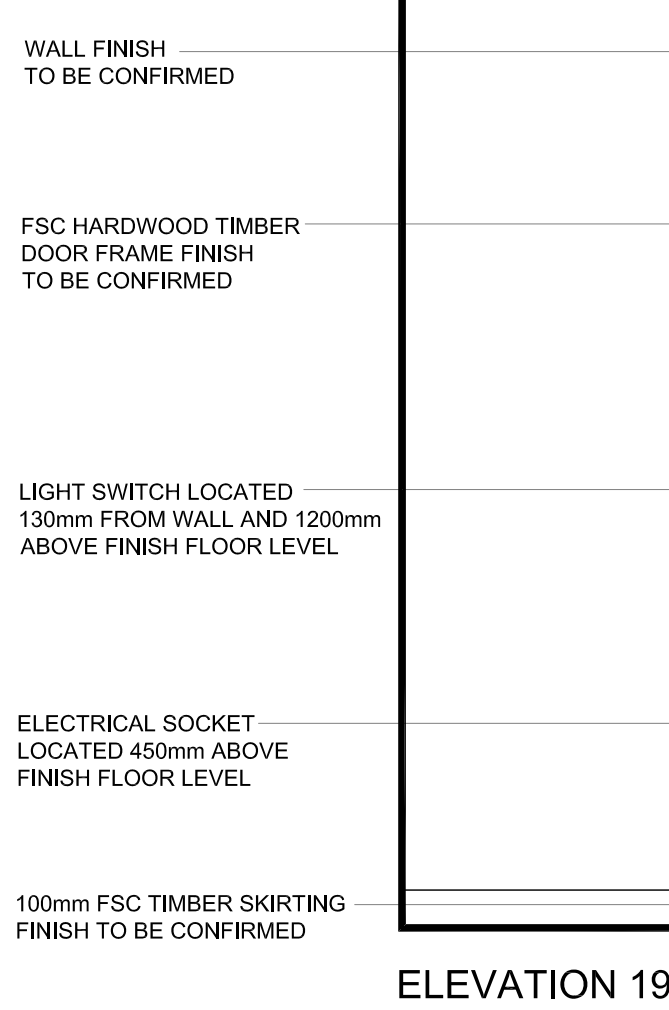
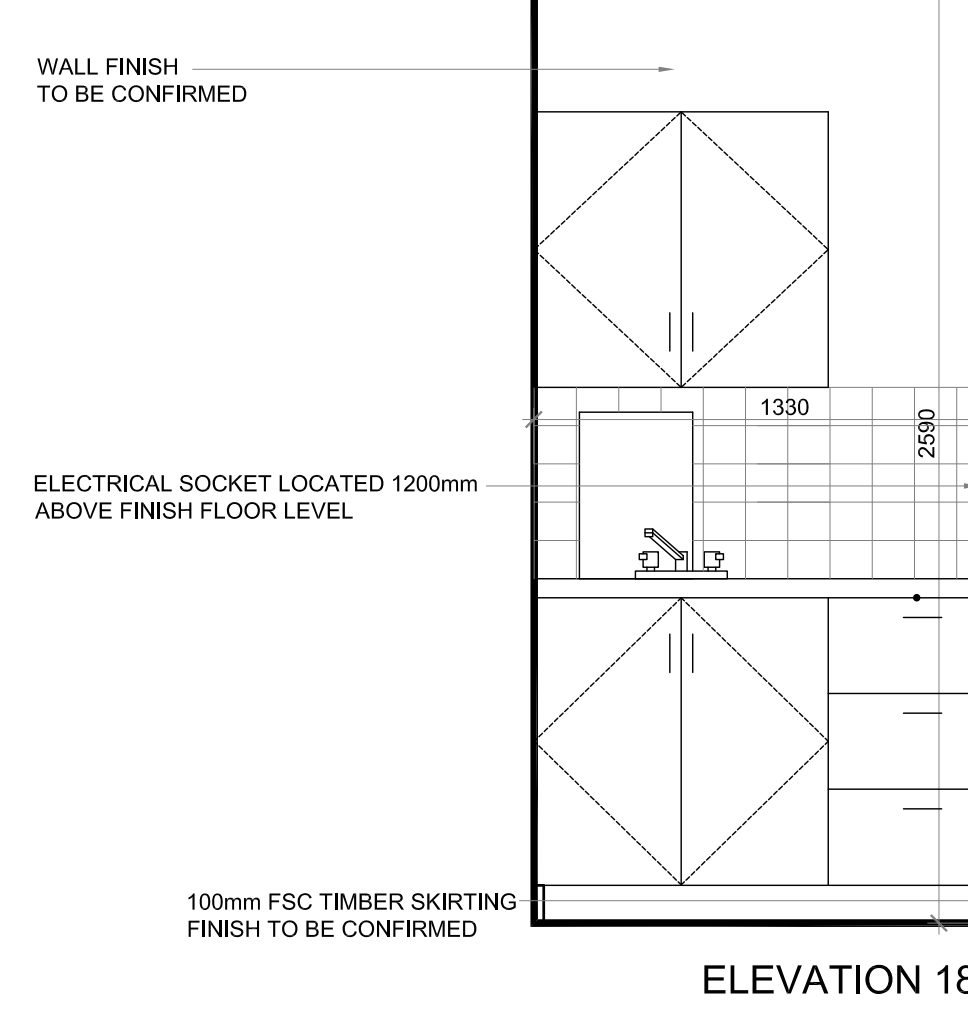
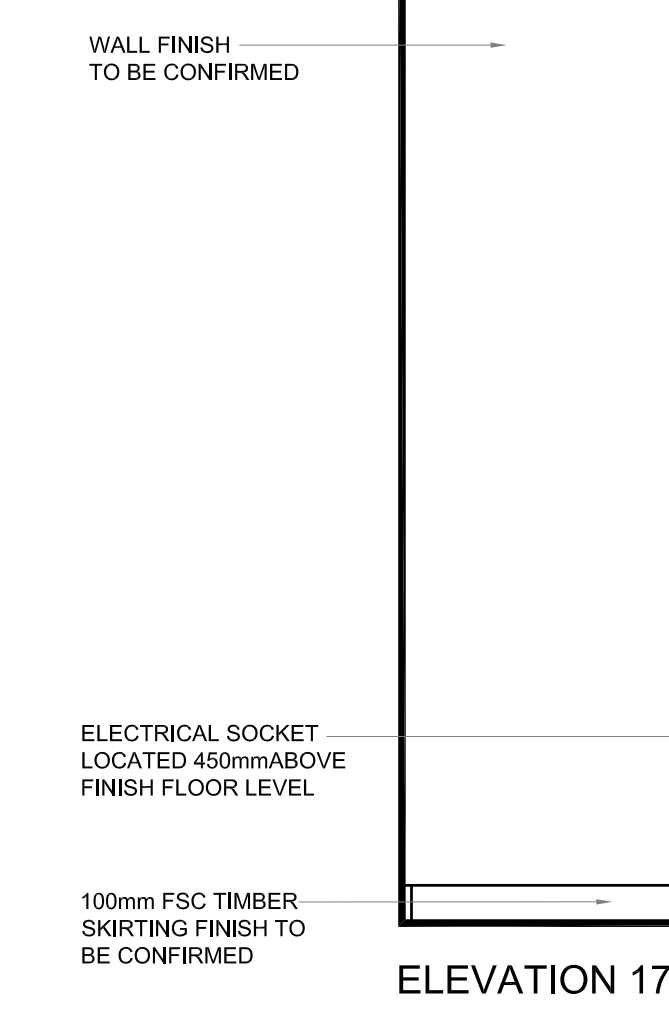
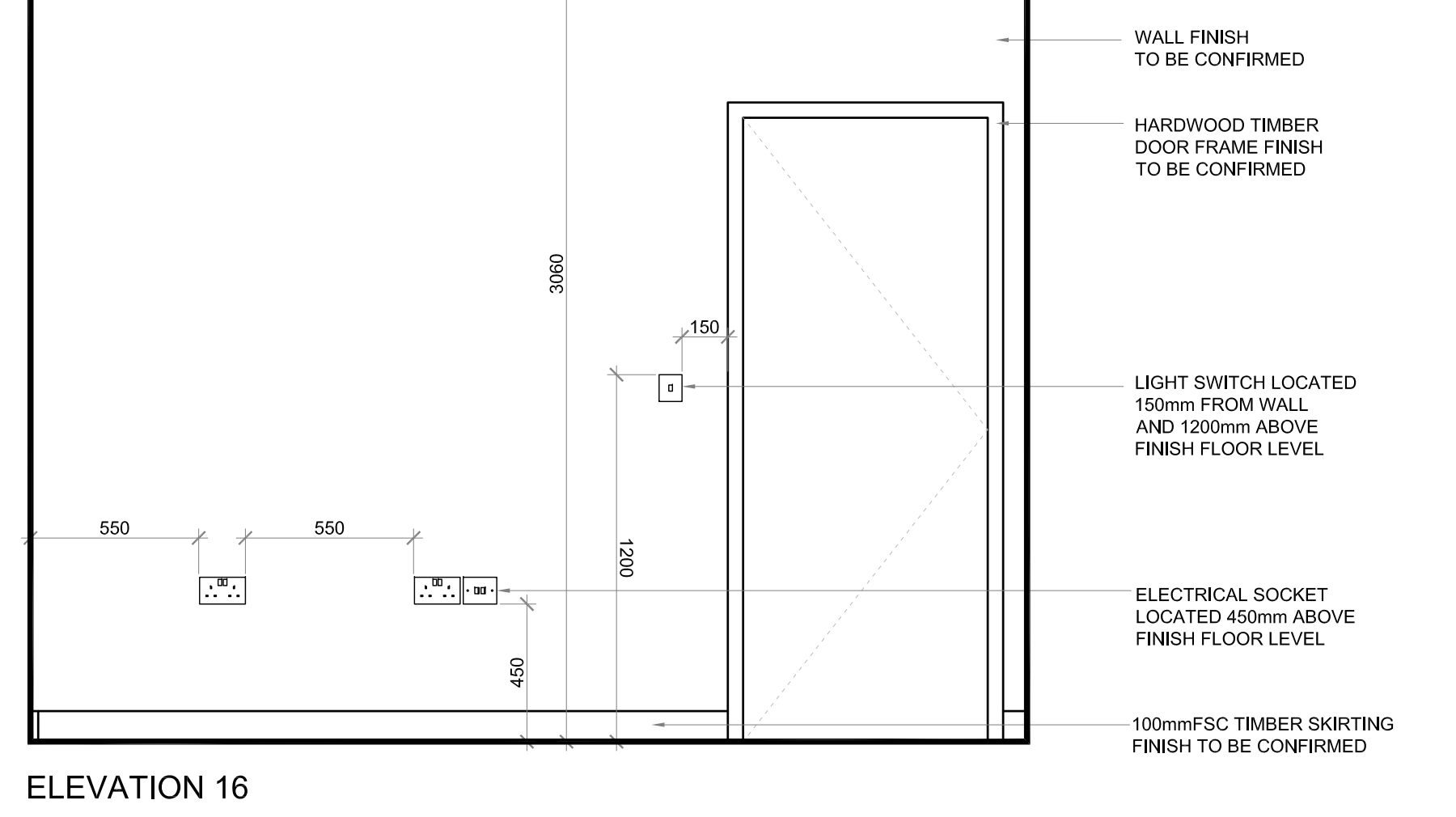
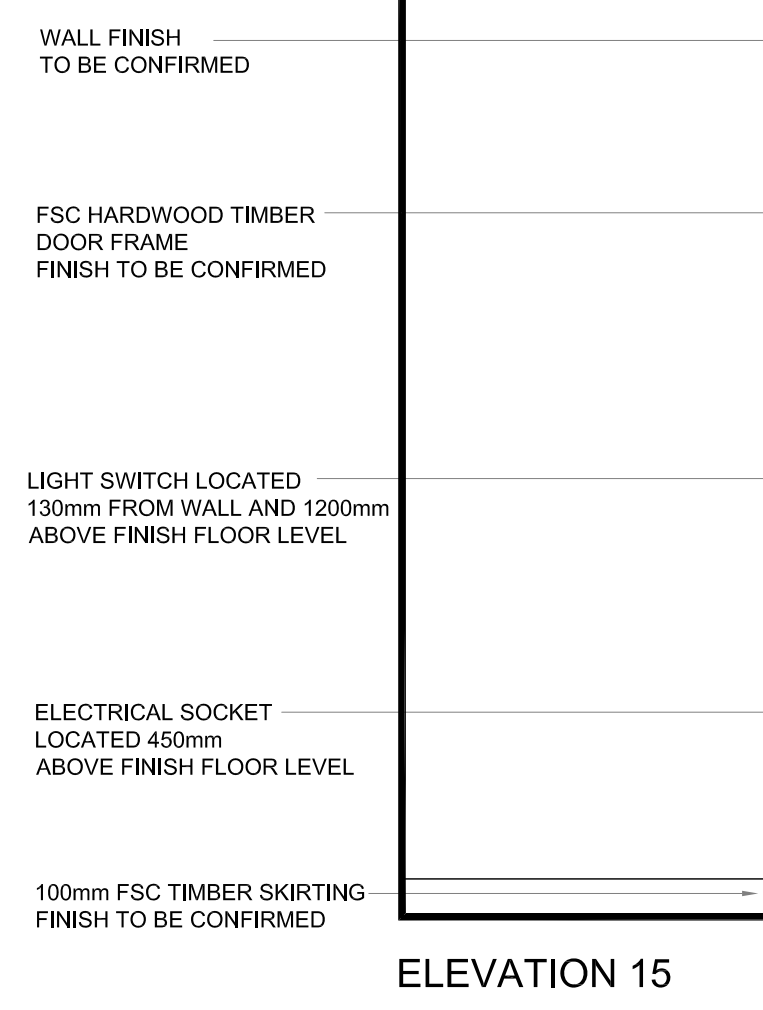
© This drawing is copyright. Figured dimensions only to be taken from this drawing. All dimensions to be checked on site. Architects to be informed immediately of any discrepancies before work proceeds.


[illegible]

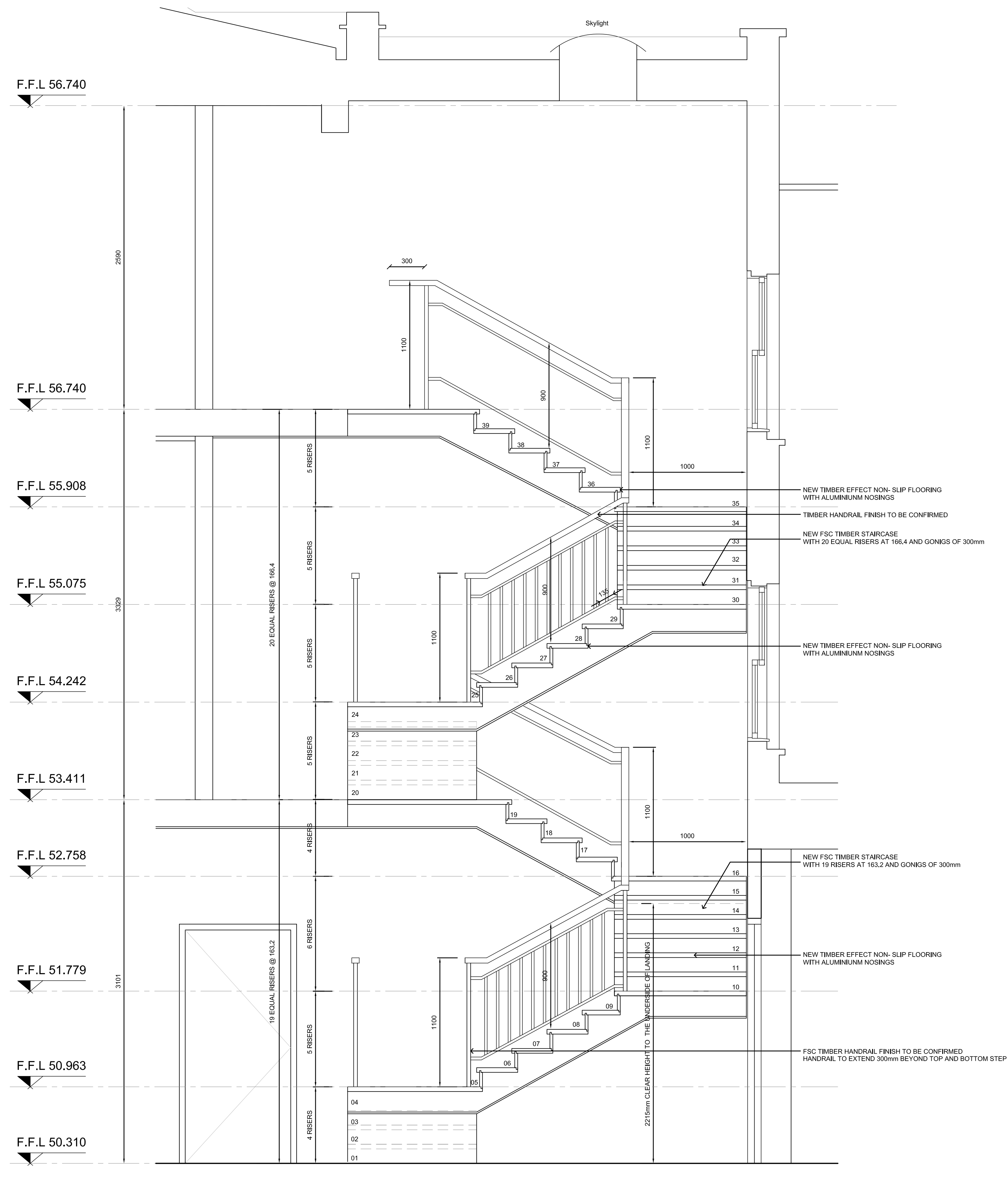
[illegible]

[illegible]

[illegible]



NOTES	CAD FILE PATH			St Kevin's Female School			Connaught House			Finte House					
	\			1 Grantham Street			Team Road			19 Golden Square					
	\			DUBLIN 8			DUBLIN 8			LONDON W1F 8HD					
	\			t: + 353 1 478 7500			t: + 353 91 783 800			t: + 44 207 437 0862					
	\			f: + 353 1 478 7500			f: + 353 91 783 800			f: + 44 207 437 0862					
	\			e: dublin@design@douglaswallace.com			e: galway@design@douglaswallace.com			e: london@design@douglaswallace.com					
	\														
	\														
	\														
	\														
												CLIENT NAME DOUGLAS WALLACE			
												PROJECT NAME 165 GRAY'S INN ROAD, LONDON WC1X 8UE			
												DRAWING TITLE INTERNAL ELEVATIONS 3			
												PROJECT NO. DRAWING NO. REV. SCALE(S) STATUS DATE DRAWN DRAWN BY CHECKED BY			
												3867 P-D03 B 1:20@A1 FOR PLANNING 10.10.07 RJ			
												© This drawing is copyright. Figured dimensions only to be taken from this drawing. All dimensions to be checked on site. Architects to be informed immediately of any discrepancies before work proceeds.			
			REVISION DATE DESCRIPTION			REVISION DATE DESCRIPTION									

[illegible]



CAD FILE PATH				St Kevin's Female School 1 Grantham Street DUBLIN 8 t: + 353 1 478 7500 f: + 353 1 478 7590 e: dublindesign@douglaswallace.com								Connaught House Tuam Road GALWAY t: + 353 91 783 800 f: + 353 91 783 890 e: galwaydesign@douglaswallace.com		Fintex House 19 Golden Square LONDON W1F 9HD t: + 44 207 437 0882 f: + 44 207 287 3583 e: londondesign@douglaswallace.com		DOUGLAS WALLACE ARCHITECTS . DESIGNERS . PROJECT MANAGERS www.douglaswallace.com							
\				CLIENT NAME DOUGLAS WALLACE																			
\				PROJECT NAME 165 GRAY'S INN ROAD, LONDON WC1X 8UE																			
\				DRAWING TITLE DOOR JAMB DETAIL 2																			
\				PROJECT NO. 3867										DRAWING NO. P-D06		REV. A	SCALE(S) 1:5@A3		STATUS FOR PLANNING		DATE DRAWN 10.10.07	DRAWN BY RJ	CHECKED BY
	A	0.7.08.08	Re-submitted for planning																				
	REVISION	DATE	DESCRIPTION	© This drawing is copyright. Figured dimensions only to be taken from this drawing. All dimensions to be checked on site. Architects to be informed immediately of any discrepancies before work proceeds.																			



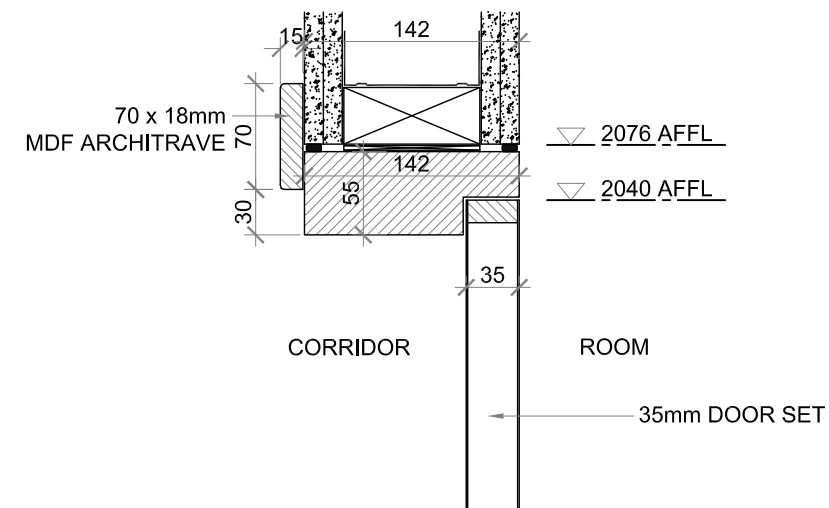
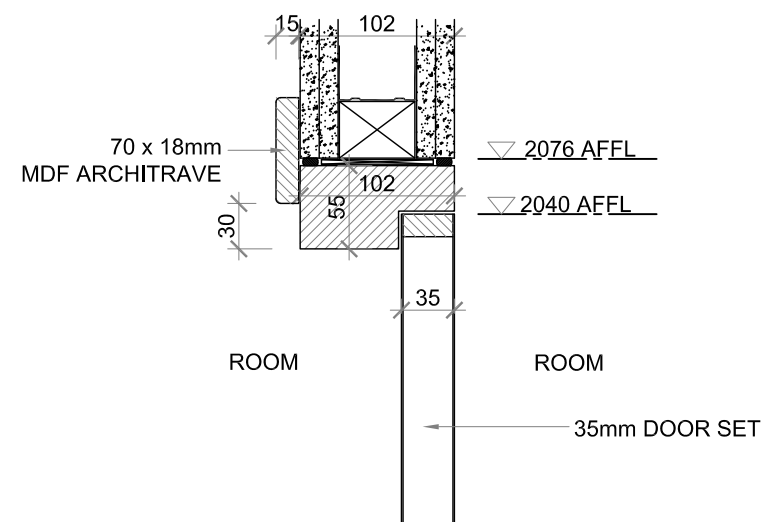
CAD FILE PATH				St Kevin's Female School 1 Grantham Street DUBLIN 8 t: + 353 1 478 7500 f: + 353 1 478 7590 e: dublindesign@douglaswallace.com								Connaught House Tuam Road GALWAY t: + 353 91 783 800 f: + 353 91 783 890 e: galwaydesign@douglaswallace.com		Fintex House 19 Golden Square LONDON W1F 9HD t: + 44 207 437 0882 f: + 44 207 287 3583 e: londondesign@douglaswallace.com		DOUGLAS WALLACE ARCHITECTS . DESIGNERS . PROJECT MANAGERS www.douglaswallace.com		
\				CLIENT NAME DOUGLAS WALLACE														
\				PROJECT NAME 165 GRAY'S INN ROAD, LONDON WC1X 8UE														
\				DRAWING TITLE DOOR JAMB DETAIL 3														
\																		
	A	07.08.08	Re-submitted for planning	PROJECT NO. 3867		DRAWING NO. P-D07		REV. A	SCALE(S) 1:5@A3		STATUS FOR PLANNING		DATE DRAWN 10.10.07	DRAWN BY RJ	CHECKED BY			
	REVISION	DATE	DESCRIPTION	© This drawing is copyright. Figured dimensions only to be taken from this drawing. All dimensions to be checked on site. Architects to be informed immediately of any discrepancies before work proceeds.														



CAD FILE PATH				<div> <div> St Kevin's Female School 1 Grantham Street DUBLIN 8 t: + 353 1 478 7500 f: + 353 1 478 7590 e: dublindesign@douglaswallace.com </div> <div> Connaught House Tuam Road GALWAY t: + 353 91 783 800 f: + 353 91 783 890 e: galwaydesign@douglaswallace.com </div> <div> Fintex House 19 Golden Square LONDON W1F 9HD t: + 44 207 437 0882 f: + 44 207 287 3583 e: londondesign@douglaswallace.com </div> <div> DOUGLAS WALLACE ARCHITECTS . DESIGNERS . PROJECT MANAGERS www.douglaswallace.com </div> </div>						
\				<div> <div>CLIENT NAME</div> <div>DOUGLAS WALLACE</div> </div>						
\				<div> <div>PROJECT NAME</div> <div>165 GRAY'S INN ROAD, LONDON WC1X 8UE</div> </div>						
\				<div> <div>DRAWING TITLE</div> <div>DOOR JAMB DETAIL 4</div> </div>						
\				<div> <div> <div>PROJECT NO.</div> <div>3867</div> </div> <div> <div>DRAWING NO.</div> <div>P-D08</div> </div> <div> <div>REV.</div> <div>A</div> </div> <div> <div>SCALE(S)</div> <div>1:5@A3</div> </div> <div> <div>STATUS</div> <div>FOR PLANNING</div> </div> <div> <div>DATE DRAWN</div> <div>10.10.07</div> </div> <div> <div>DRAWN BY</div> <div>RJ</div> </div> <div> <div>CHECKED BY</div> <div></div> </div> </div>						
	A	07.08.08	Re-submitted for planning							
	REVISION	DATE	DESCRIPTION	<div>© This drawing is copyright. Figured dimensions only to be taken from this drawing. All dimensions to be checked on site. Architects to be informed immediately of any discrepancies before work proceeds.</div>						



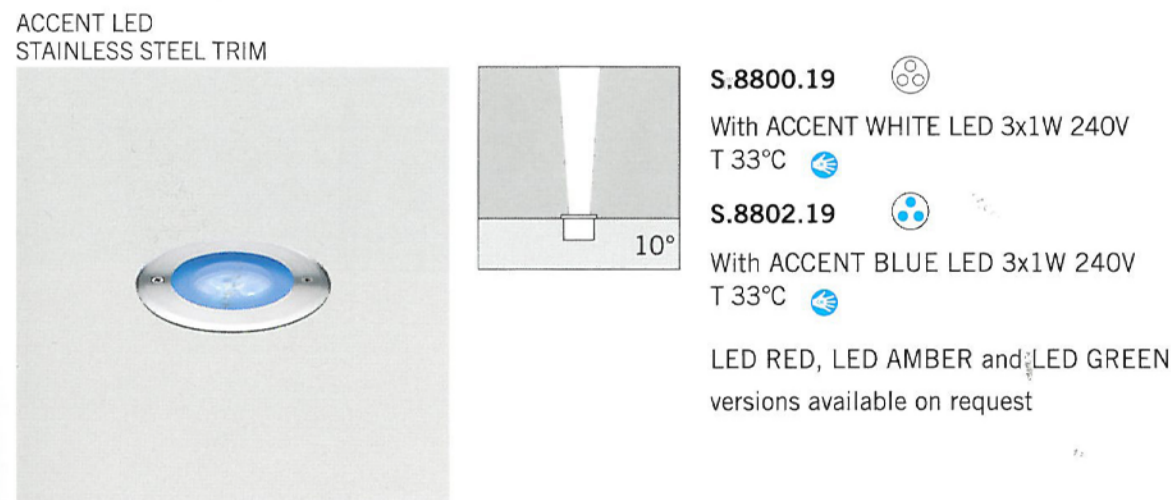
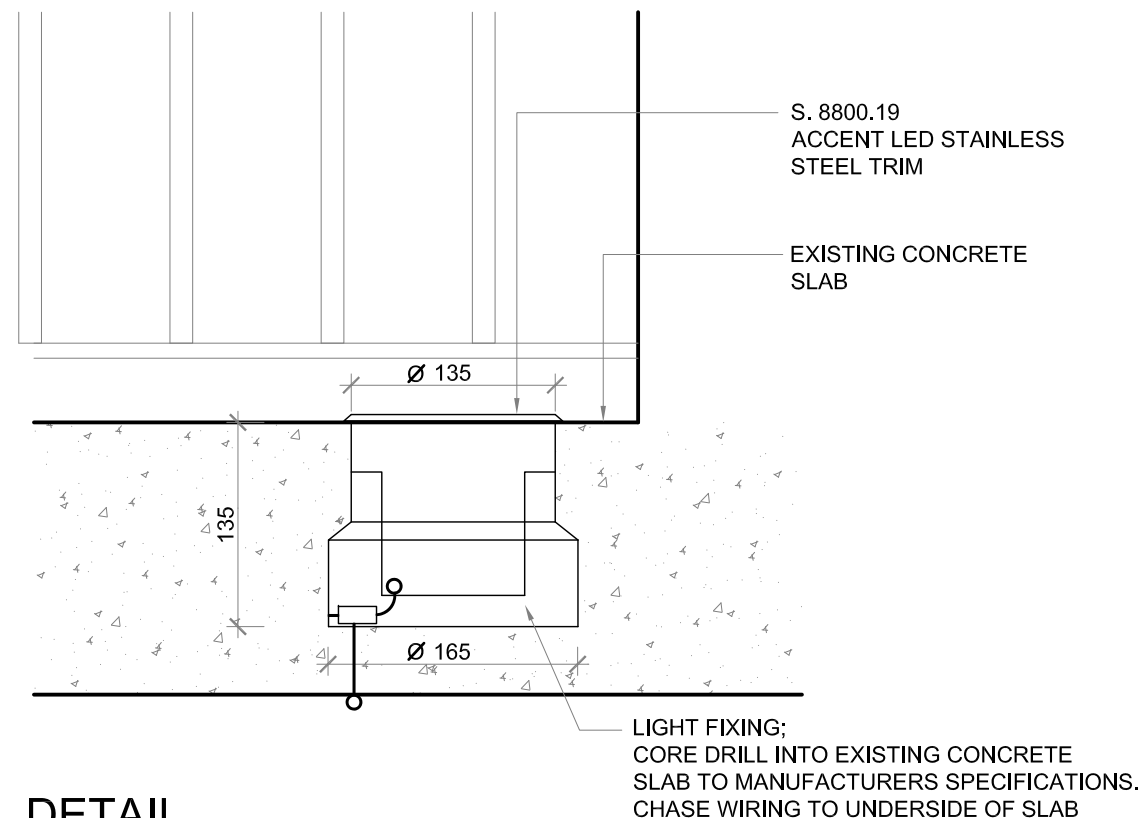
CAD FILE PATH				St Kevin's Female School 1 Grantham Street DUBLIN 8 t: + 353 1 478 7500 f: + 353 1 478 7590 e: dublindesign@douglaswallace.com								Connaught House Tuam Road GALWAY t: + 353 91 783 800 f: + 353 91 783 890 e: galwaydesign@douglaswallace.com				Fintex House 19 Golden Square LONDON W1F 9HD t: + 44 207 437 0882 f: + 44 207 287 3583 e: londondesign@douglaswallace.com				DOUGLAS WALLACE ARCHITECTS . DESIGNERS . PROJECT MANAGERS www.douglaswallace.com					
\				CLIENT NAME DOUGLAS WALLACE																					
\				PROJECT NAME 165 GRAY'S INN ROAD, LONDON WC1X 8UE																					
\				DRAWING TITLE DOOR JAMB DETAIL 5																					
\				PROJECT NO. 3867												DRAWING NO. P-D09		REV. A	SCALE(S) 1:5@A3		STATUS FOR PLANNING		DATE DRAWN 10.10.07	DRAWN BY RJ	CHECKED BY
	A	07.08.08	Re-submitted for planning																						
	REVISION	DATE	DESCRIPTION	© This drawing is copyright. Figured dimensions only to be taken from this drawing. All dimensions to be checked on site. Architects to be informed immediately of any discrepancies before work proceeds.																					



CAD FILE PATH				St Kevin's Female School 1 Grantham Street DUBLIN 8 t: + 353 1 478 7500 f: + 353 1 478 7590 e: dublindesign@douglaswallace.com										Connaught House Tuam Road GALWAY t: + 353 91 783 800 f: + 353 91 783 890 e: galwaydesign@douglaswallace.com										Fintex House 19 Golden Square LONDON W1F 9HD t: + 44 207 437 0882 f: + 44 207 287 3583 e: londondesign@douglaswallace.com										DOUGLAS WALLACE ARCHITECTS . DESIGNERS . PROJECT MANAGERS www.douglaswallace.com									
\				CLIENT NAME DOUGLAS WALLACE																																							
\				PROJECT NAME 165 GRAY'S INN ROAD, LONDON WC1X 8UE																																							
\				DRAWING TITLE DOOR HEAD DETAIL																																							
\				PROJECT NO. 3867		DRAWING NO. P-D10				REV. A		SCALE(S) 1:5@A3				STATUS FOR PLANNING				DATE DRAWN 10.10.07		DRAWN BY RJ		CHECKED BY																			
\				A		07.08.08				Re-submitted for planning																																	
				REVISION		DATE				DESCRIPTION										© This drawing is copyright. Figured dimensions only to be taken from this drawing. All dimensions to be checked on site. Architects to be informed immediately of any discrepancies before work proceeds.																							



CAD FILE PATH				St Kevin's Female School 1 Grantham Street DUBLIN 8 t: + 353 1 478 7500 f: + 353 1 478 7590 e: dublindesign@douglaswallace.com												Connaught House Tuam Road GALWAY t: + 353 91 783 800 f: + 353 91 783 890 e: galwaydesign@douglaswallace.com				Fintex House 19 Golden Square LONDON W1F 9HD t: + 44 207 437 0882 f: + 44 207 287 3583 e: londondesign@douglaswallace.com				DOUGLAS WALLACE ARCHITECTS . DESIGNERS . PROJECT MANAGERS www.douglaswallace.com			
\				CLIENT NAME DOUGLAS WALLACE																							
\				PROJECT NAME 165 GRAY'S INN ROAD, LONDON WC1X 8UE																							
\				DRAWING TITLE WALL DETAILS																							
				PROJECT NO. 3867		DRAWING NO. P-D11			REV. A		SCALE(S) 1:5@A3			STATUS FOR PLANNING			DATE DRAWN 10.10.07		DRAWN BY RJ		CHECKED BY						
	A	07.08.08	Re-submitted for planning																								
	REVISION	DATE	DESCRIPTION	© This drawing is copyright. Figured dimensions only to be taken from this drawing. All dimensions to be checked on site. Architects to be informed immediately of any discrepancies before work proceeds.																							



EXTRACT FROM CONCORD:MARLIN CATALOGUE SHOWING THE LIGHTFITTING IN POSITION AND SECTION OF LIGHT BEAM OF 10°. THE FRONT TRIM IS FLUSH WITH THE GROUND TO AVOID INTERFERENCE TO PEDESTRIANS.

CAD FILE PATH				St Kevin's Female School 1 Grantham Street DUBLIN 8 t: + 353 1 478 7500 f: + 353 1 478 7590 e: dublindesign@douglaswallace.com										Connaught House Tuam Road GALWAY t: + 353 91 783 800 f: + 353 91 783 890 e: galwaydesign@douglaswallace.com										Fintex House 19 Golden Square LONDON W1F 9HD t: + 44 207 437 0882 f: + 44 207 287 3583 e: londondesign@douglaswallace.com										DOUGLAS WALLACE ARCHITECTS . DESIGNERS . PROJECT MANAGERS www.douglaswallace.com									
\				CLIENT NAME DOUGLAS WALLACE																																							
\				PROJECT NAME 165 GRAY'S INN ROAD, LONDON WC1X 8UE																																							
\				DRAWING TITLE EXTERNAL LIGHT DETAIL																																							
				PROJECT NO. 3867		DRAWING NO. P-D12				REV. 		SCALE(S) 1:10 / 1:5@A3				STATUS FOR PLANNING				DATE DRAWN 06.08.08		DRAWN BY KEY		CHECKED BY 																			
	REVISION	DATE	DESCRIPTION	© This drawing is copyright. Figured dimensions only to be taken from this drawing. All dimensions to be checked on site. Architects to be informed immediately of any discrepancies before work proceeds.																																							