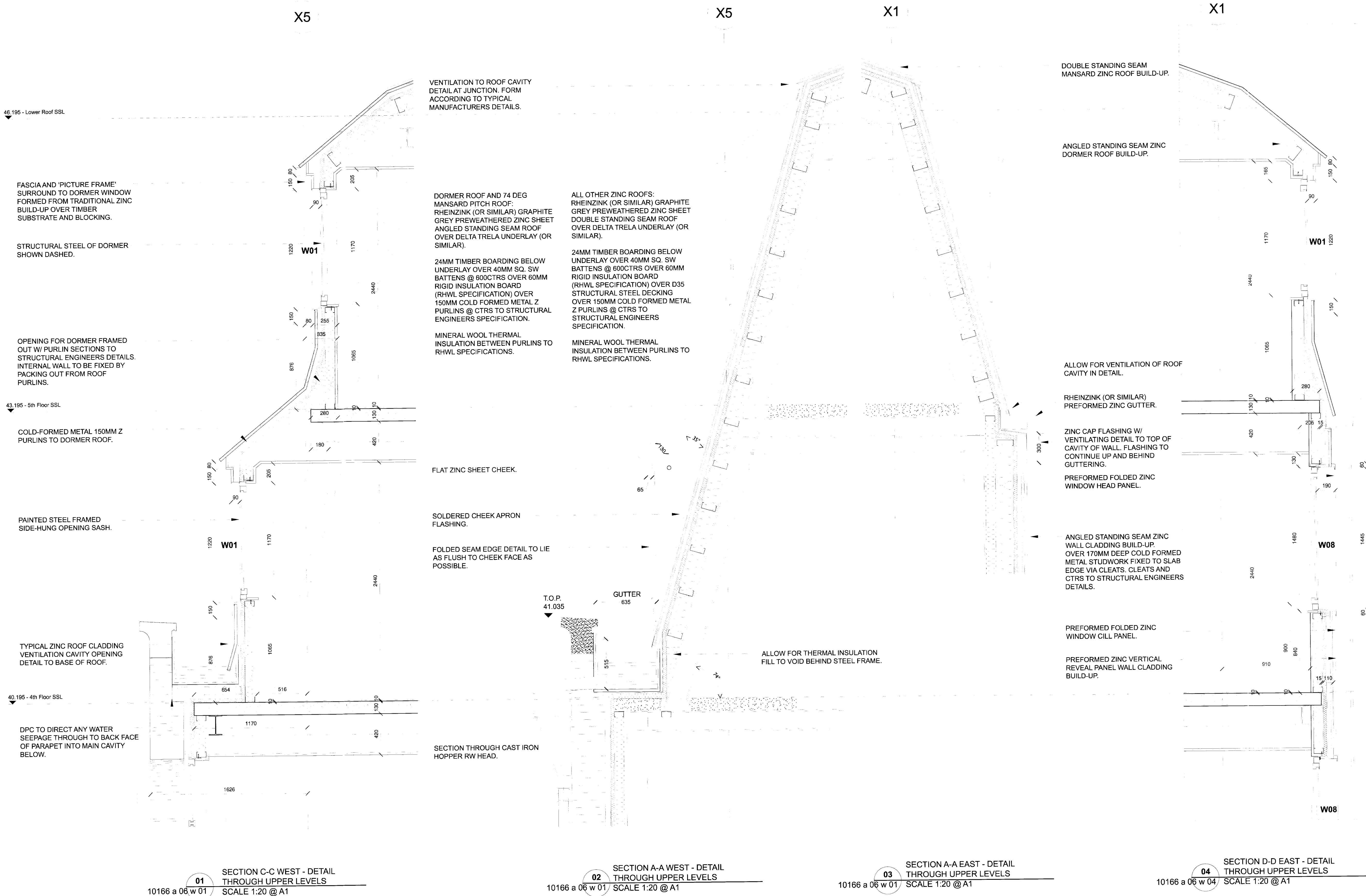


DO NOT SCALE FROM THIS DRAWING

DRAWING TO BE READ IN CONJUNCTION WITH ALL OTHER ARCHITECTS' AND ENGINEERS' CONTRACT DRAWING & SPECIFICATIONS. ANY DISCREPANCIES MUST BE BROUGHT TO THE ATTENTION OF THE ARCHITECT IMMEDIATELY. THE CONTRACTOR MUST VERIFY ALL DIMENSIONS BY SITE MEASUREMENT BEFORE ORDERING MATERIALS OR MANUFACTURING COMPONENTS. SUBSTITUTE MATERIALS & PRODUCTS TO THOSE NAMED WILL BE ACCEPTABLE IF PROVEN TO BE OF EQUAL OR HIGHER PERFORMANCE AND NOT IN CONFLICT WITH OTHER ELEMENTS.

NOTE:
WRITE NOTES SPECIFIC TO THIS DRAWING & REFERENCES TO OTHER ARCHITECTS' / ENGINEERS' DRAWINGS WITHIN THIS MTEXT BOX



03/12/2008 SETTING OUT INFORMATION ADDED
14/10/2008 HOTEL CONSTRUCTION ISSUE
14/04/2008 FOR WEST WING SHELL RE-TENDER
06/03/2007 ISSUED FOR CONSTRUCTION FOR MAIN CONTRACT
11/09/2006 REVISIONS TO TENDER ISSUE AS CLOUDED
05/05/2006 TENDER ISSUE
31/03/2006 GENERAL UPDATES FOR INFORMATION

REV DATE DESCRIPTION

FOR CONSTRUCTION

JOB TITLE
ST PANCRAS CHAMBERS WEST WING

DRAWING TITLE
GENERAL SECTION DETAILS THROUGH MANSARD ROOF AND DORMERS

JOB NO. 10166 A 40 W 202
SCALE 1:20 @ A1
DATE SEPT 06

DESIGNED BY
DRAWN BY
CHECKED BY
DATE

MS 1:20 (1:40@A3)

RHWL Architects
and
Richard Griffiths Architects
5 MARLBOROUGH MEWS 72-76 BOURNHOUGH STREET
LONDON, SE1 1UN
TEL: 020 7507 8700 FAX: 020 7403 7867 E-MAIL: RHWL@RHWLARCHITECTS.CO.UK

PROPOSED
DRAWING