

01 EAST ELEVATION - SOUTH END  
SCALE 1:50 @ A1

LOUVRES

DORMER:  
GRAPHITE GREY PREWEATHERED ZINC  
ROOF AND CHEEK CLADDING AS PER  
WEST ELEVATION DETAILS - REFER  
DRAWING NO. A 07 WW 204.

GRAPHITE GREY PREWEATHERED ZINC  
'PICTURE FRAME' WINDOW SURROUND  
FLUSH WITH STANDING SEAM OF  
CLADDING.  
THERMALLY BROKEN PPC STEEL  
WINDOW FRAME TYPICALLY.  
ZINC GUTTER

RHEINZINK OR SIMILAR  
GRAPHITE GREY  
PREWEATHERED ZINC ANGLED  
STANDING SEAM SYSTEM  
SEAMS @ 500 CTS. MAX 3 METRE  
SHEETS TO BE CONTINUOUS  
OVER FLOOR HEIGHT WHERE  
ACHIEVABLE.

JANSEN OR SIMILAR THERMALLY  
BROKEN PPC STEEL WINDOW FRAME -  
OPENING.  
SETTING OUT SEE 10166 A 07 W 209  
AND 10166 A 40 W 302.

REVEAL

RWP BEHIND SEE DETAIL

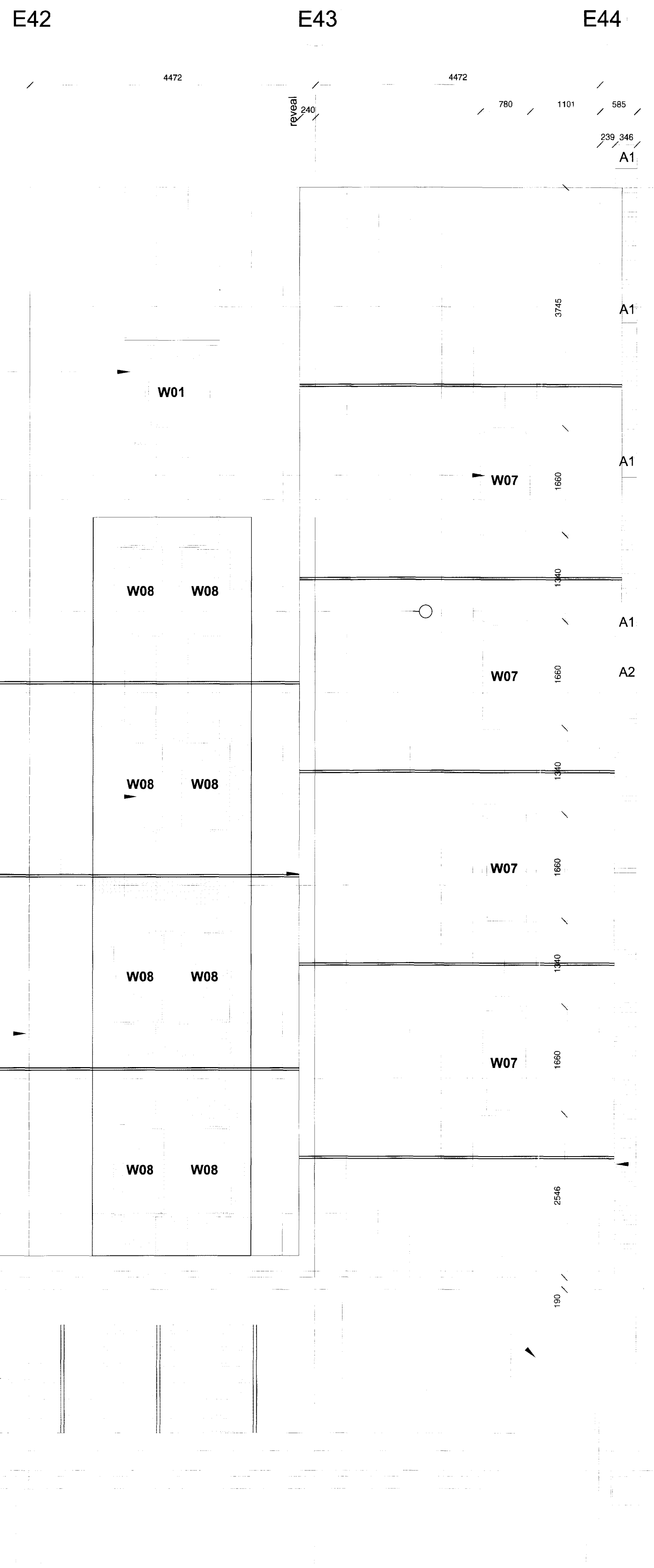
PROJECTING VERTICAL BAND CLAD IN  
ZINC ANGLED STANDING SEAM  
SYSTEM.  
SETTING OUT SEE 10166 A 07 W 209  
AND 10166 A 40 W 302.

STEP IN WALL TO ALLOW FOR  
SERVICES ACCESS. CLAD IN  
KINGSPAN SYSTEM OR SIMILAR TO BE  
CONFIRMED. SERVICES TO BE FIXED  
ACCORDING TO MECHANICAL  
ENGINEERS SPECIFICATIONS.

ZINC FLASHING

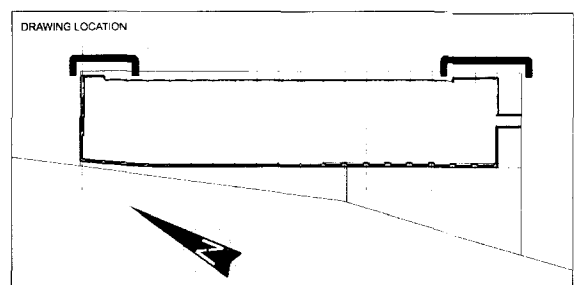
STEP IN FACADE TO CLAD FIRST  
FLOOR STEEL TRANSFER BEAMS.

MOUNTED MESH SCREEN BUILDUP AS  
PER NORTH ELEVATION -  
UNDERCROFT LEVEL: GALV. MS  
WELDED WIRE MESH PANELS.  
FRAME AT TOP AND BOTTOM W/ GALV.  
MS SLEEVE FIXED TO STEEL ANGLE  
SECTION SUPPORTS.  
GALV. MS FLATS AS VERTICAL  
STRAPS @ 1200MM CTRS.



02 EAST ELEVATION - NORTH END  
SCALE 1:50 @ A1

DO NOT SCALE FROM THIS DRAWING  
DRAWING TO BE READ IN CONJUNCTION WITH ALL OTHER ARCHITECTS  
AND ENGINEERS CONTRACT DRAWING & SPECIFICATIONS  
ANY DISCREPANCIES MUST BE BROUGHT TO THE ATTENTION OF THE  
ARCHITECT IMMEDIATELY  
THE CONTRACTOR MUST VERIFY ALL DIMENSIONS BY SITE  
MEASUREMENT BEFORE ORDERING MATERIALS OR MANUFACTURING  
COMPONENTS  
SUBSTITUTE MATERIALS & PRODUCTS TO THOSE NAMED WILL BE  
ACCEPTABLE IF PROVEN TO BE OF EQUAL OR HIGHER PERFORMANCE  
AND NOT IN CONFLICT WITH OTHER ELEMENTS.



NOTES  
WRITE NOTES SPECIFIC TO THIS DRAWING & REFERENCES TO OTHER  
ARCHITECTS / ENGINEERS DRAWINGS WITHIN THIS TEXT BOX

PREWEATHERED GRAPHITE  
GREY ZINC ANGLED STANDING  
SEAM AS PER WEST  
ELEVATION - REFER DRAWING  
NO. A 07 WW 204

34.195 - 2nd Floor

31.195 - 1st Floor

28.395 - SSL undercroft

03 LINK BRIDGE EAST ELEVATION  
SCALE 1:50 @ A1

112mm THICK  
CHARWOOD BRICK  
RETURN WALLS.

F	01/07/2009	WINDOW NUMBERS ADDED
E	14/10/2008	HOTEL CONSTRUCTION ISSUE NO OF WINDOWS REDUCED, ACCESS TO UNDERCROFT ADDED, LOUVRE ADDED
D	14/04/2008	FOR WEST WING SHELL RE-TENDER
C	06/03/2007	ISSUED FOR CONSTRUCTION FOR MAIN CONTRACT
B	11/09/2006	REVISIONS TO TENDER ISSUE AS CLOUDED
A	05/05/2006	TENDER ISSUE

REV DATE DESCRIPTION  
FOR CONSTRUCTION

JOB TITLE  
ST PANCRAS CHAMBERS WEST WING

DRAWING TITLE  
PRELIMINARY EAST ELEVATION  
EACH END AND LINK BRIDGE

JOB NO	10166 A 07 W 206	REV	F
DRAWN BY	SCALE (OF A1)	DATE	
MS	1:50 (1:100@A3)	SEPT 06	

RHWL Architects

Richard Griffiths Architects  
5 MADSTONE MEWS 72-76 BOROUGH HIGH STREET  
LONDON SE1 1GN  
TEL: 020 7591 8996 FAX: 020 7463 7867 E: RICHARD.GRIFFITHS@RHWA.CO.UK

PROPOSED  
DRAWING