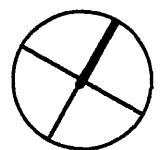


FIRST FLOOR: as proposed



DO NOT SCALE  
ANY ALTERATIONS  
TO THIS DRAWING  
MUST BE APPROVED  
BY THE ARCHITECT

Joanna Eade RIBA  
7 Morton Mews  
London  
SW5 0TE  
telephone 020 7373 0035  
e-mail j.eade@jeyn.co.uk

PROPOSED ALTERATIONS TO 37 JOHN'S MEWS, LONDON,  
WC1N 2NS

FIRST FLOOR PLAN - as PROPOSED

1:50

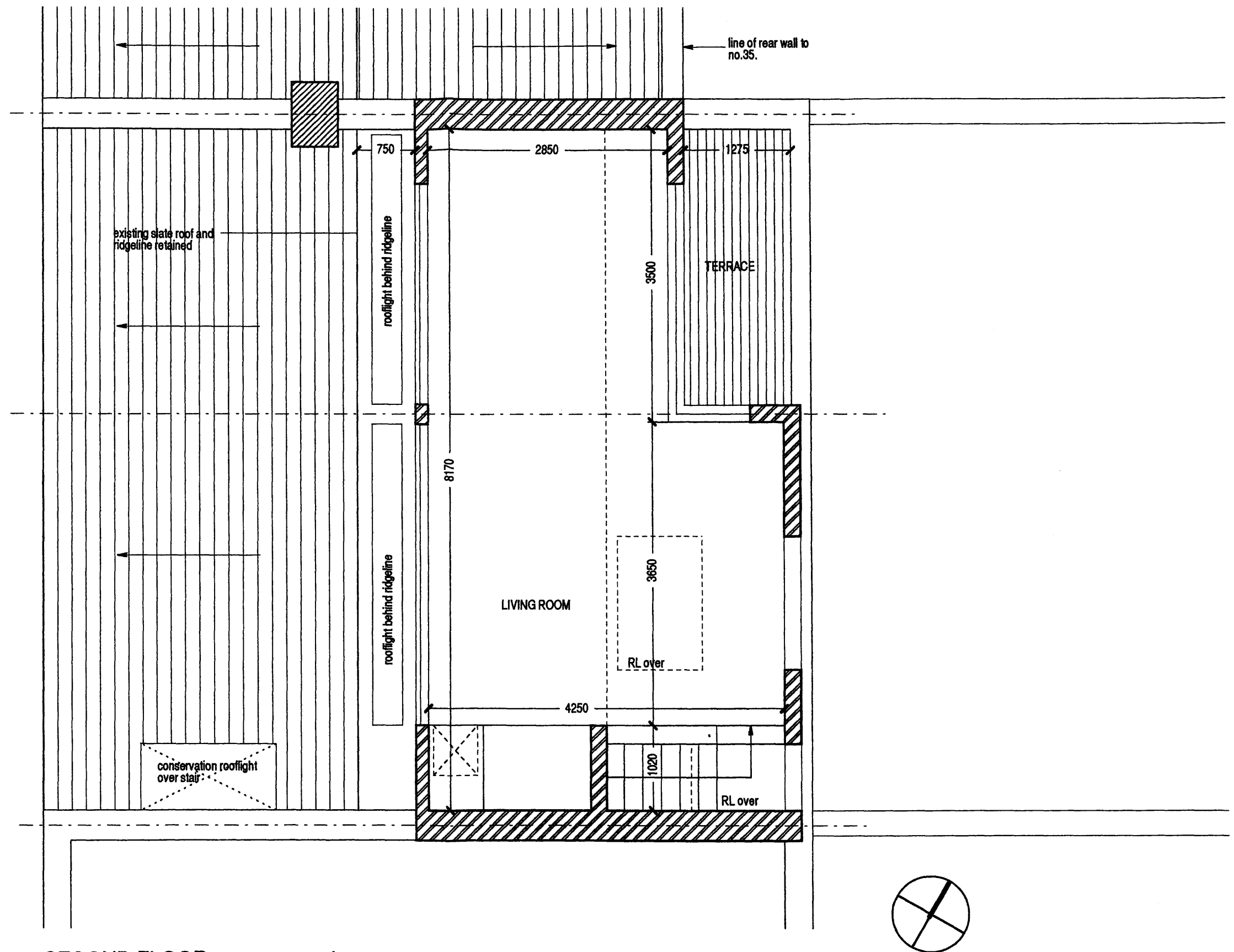
NOV 2008

D

PLANNING

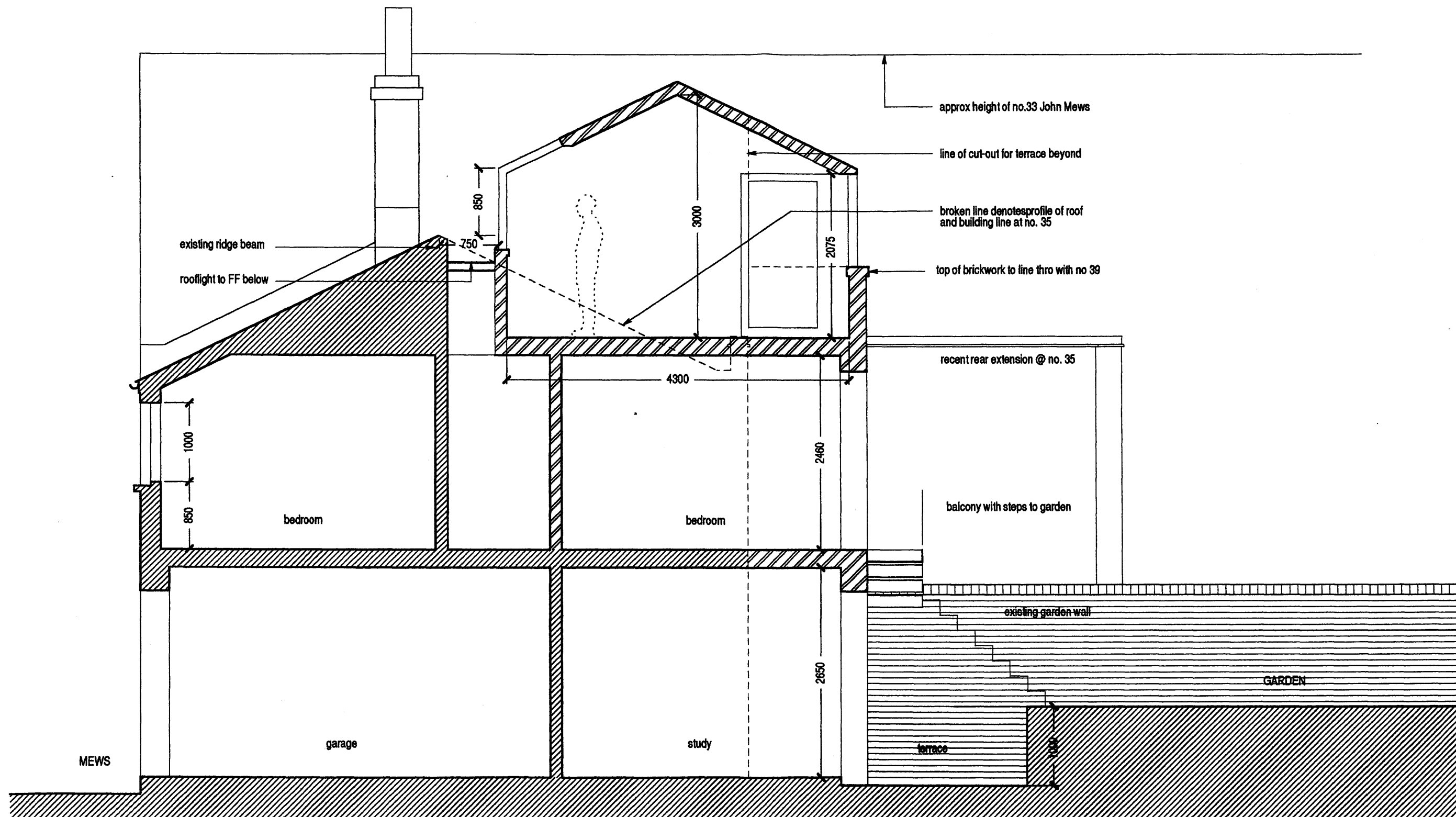
8 Feb 2010

**JHN**  
**A111**



SECOND FLOOR: as proposed

DO NOT SCALE ANY ALTERATIONS TO THIS DRAWING MUST BE APPROVED BY THE ARCHITECT		Joanne Esda RIBA 7 Merton Mews London SW5 0TE telephone 020 7573 0035 e-mail j.esda@em.co.uk	PROPOSED ALTERATIONS TO 37 JOHN'S MEWS, LONDON, WC1N 2NS	1:100	NOV 2008	D	JHN A112
			SECOND FLOOR PLAN - as PROPOSED	PLANNING	8 Feb 2010		



CROSS SECTION  
as proposed

DO NOT SCALE  
ANY ALTERATIONS  
TO THIS DRAWING  
MUST BE APPROVED  
BY THE ARCHITECT

Joanna Esda FRBA  
7 Morton Mews  
London  
SW5 8TE  
telephone 020 7373 9035  
e-mail joanne@jenn.co.uk

PROPOSED ALTERATIONS TO 37 JOHN'S MEWS, LONDON,  
WC1N 2NS

CROSS SECTION - as PROPOSED

1:100

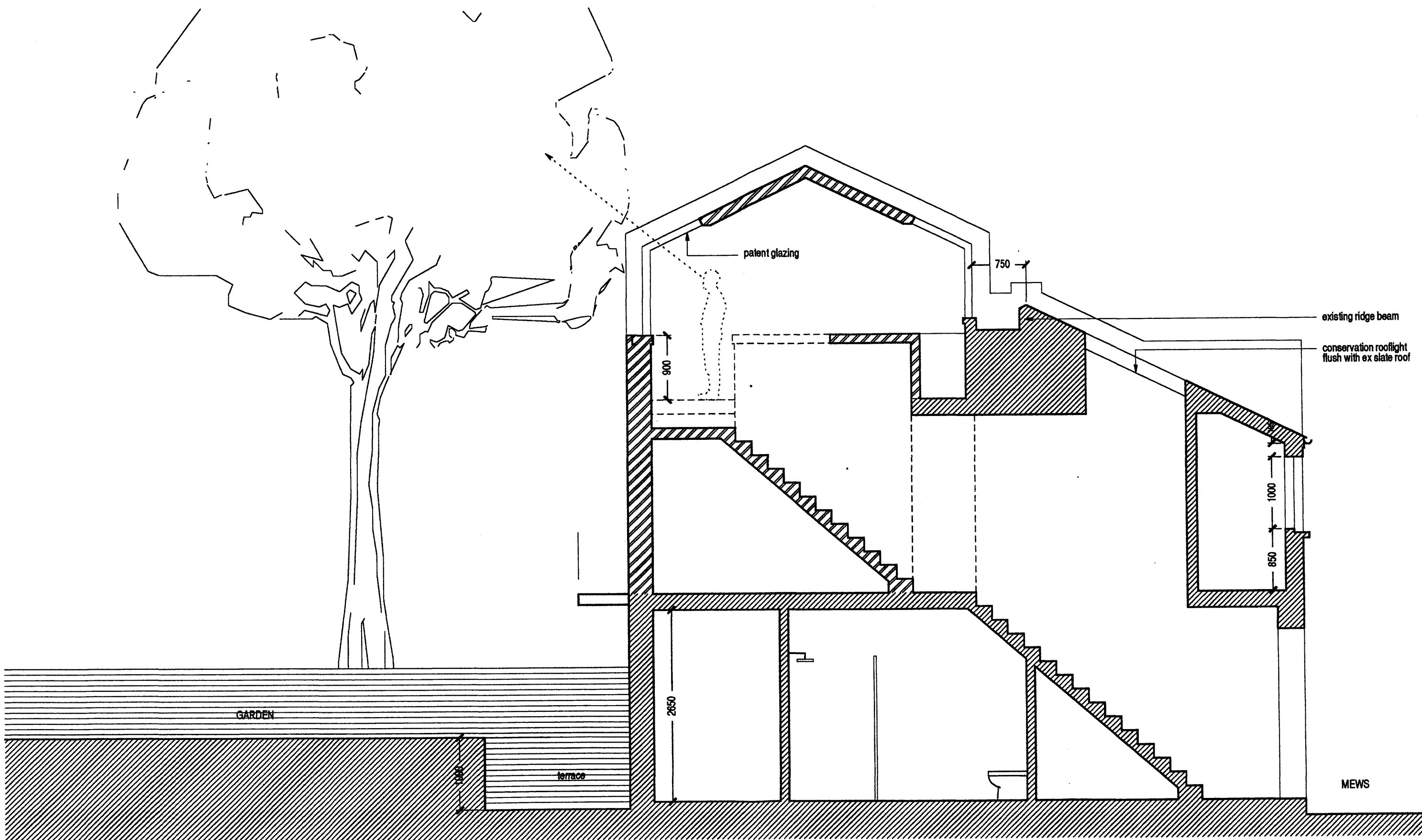
NOV 2008

D

PLANNING

4 February 2010

JHN  
A115



CROSS SECTION THRO' STAIR  
as proposed

DO NOT SCALE  
ANY ALTERATIONS  
TO THIS DRAWING  
MUST BE APPROVED  
BY THE ARCHITECT

Joanna Esda RIBA  
7 Morion Mews  
London  
SW5 0TE  
telephone 020 7373 0635  
e-mail j.esda@con.co.uk

PROPOSED ALTERATIONS TO 37 JOHN'S MEWS, LONDON,  
WC1N 2NS

CROSS SECTION THRO' STAIR - as PROPOSED

1:100

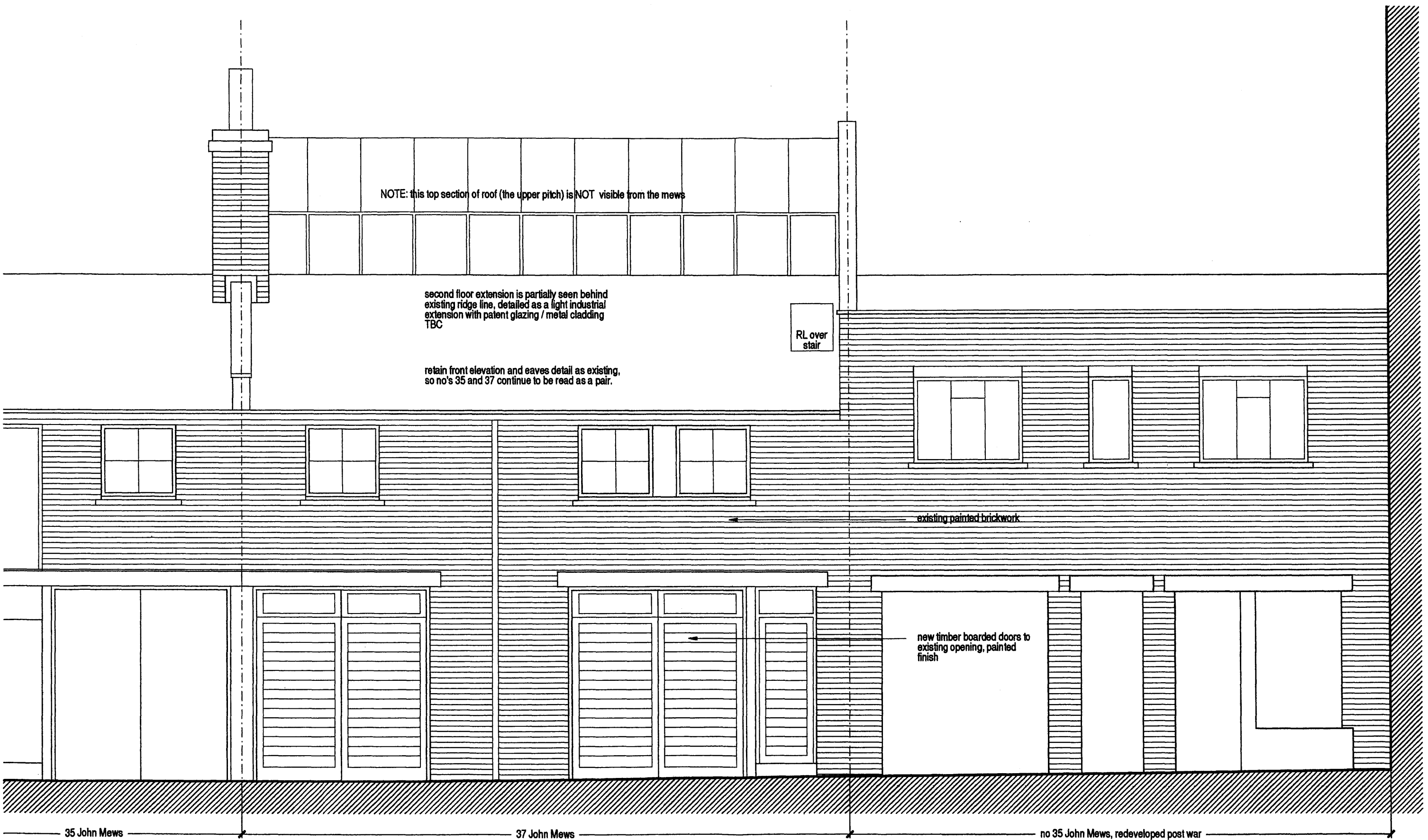
PLANNING

NOV 2008

8 Feb 2010

D

JHN  
A116



FRONT ELEVATION: as proposed

DO NOT SCALE ANY ALTERATIONS TO THIS DRAWING MUST BE APPROVED BY THE ARCHITECT		Joanna Ellis RIBA 7 Marston Mews London SW5 0TE telephone 020 7373 8025 e-mail j.ellis@cen.co.uk	PROPOSED ALTERATIONS TO 37 JOHN'S MEWS, LONDON, WC1N 2NS	1:50	NOV 2008	D	JHN A120
			FRONT ELEVATION - as proposed	PLANNING	8 Feb 2010		



REAR ELEVATION: as proposed

DO NOT SCALE  
ANY ALTERATIONS  
TO THIS DRAWING  
MUST BE APPROVED  
BY THE ARCHITECT

Joanna Esda RIBA  
7 Merton Mews  
London  
SW5 8TE  
telephone 020 7379 0835  
e-mail j.esda@zen.co.uk

PROPOSED ALTERATIONS TO 37 JOHN'S MEWS, LONDON,  
WC1N 2NS

REAR ELEVATION - as proposed

1:50

PLANNING

NOV 2008

8 Feb 2010

D

JHN  
A121