

62 Doughty St. WC1N 2LQ

## APPLICATION FOR PLANNING PERMISSION & LISTED BUILDING CONSENT.

### CONTENTS

RECEIVED 26 JAN 2010

- 1 Covering letter and summary.
- 2 Completed application form  
Including signed certificate & article 7
- 3 Location plan
- 4 Fee cheque £335
- 5 Design and access statements
- 6 Summary and notes of pre-application actions
- 7 Maps, building survey extract, auction note in support of change of use to residential.
- 8 Photographs from the streets.
- 9 Compound photo at the rear showing flat roof to be removed to recreate garden  
Indicative sketch of reformed garden.
- 10 Note and sketches showing proposed internal adjustment of window reveals.
- 11 Drawing schedules
- 12 Survey drawings of the existing building  
Drawings showing demolition  
Proposal drawings.

#### ADDITIONAL INFORMATION SUPPLIED 26 01 2010.

- 13 Photographic schedule.
- 14 New side door to Roger St. A3
- 15 Internal insulation of external walls
- 16 typical internal door details
- 17 typical new window in existing opening exposed by roof removal

NEW DOOR AND FANLIGHT  
SET IN EXISTING OPENING

BRICK ARCH UNALTERED

RECEIVED 26 JAN 2010

DOUBLE  
GLAZED  
FANLIGHT

1020

OUTSIDE

INSIDE

B B C C

SOLID  
PINE  
DOOR

A

EXISTING PAINTED RENDERED REVEAL

REVEAL DETAIL EXTENDED

LEVEL OF  
SOFFIT OF  
EXISTING CILL

D

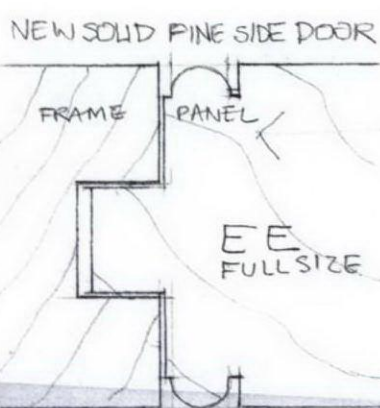
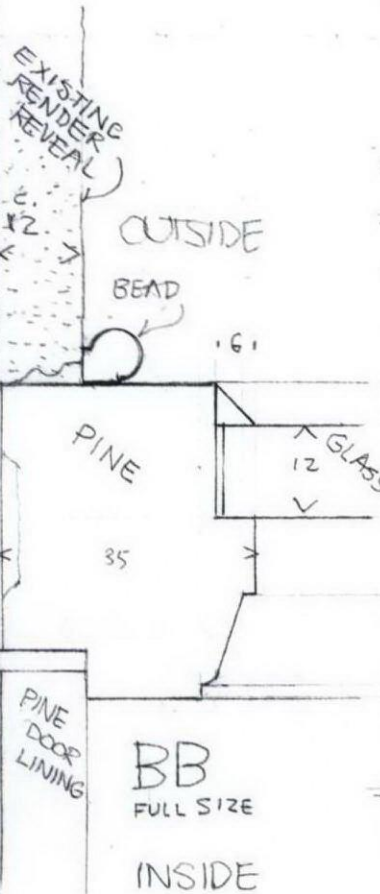
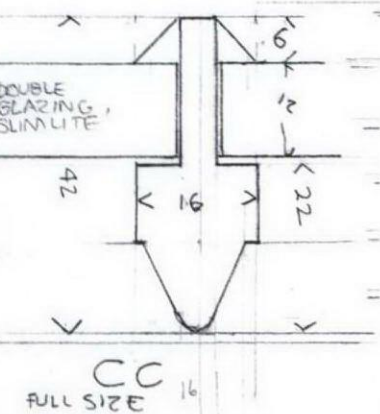
D

DOOR PAINTED OFF BLACK  
FRAME AND RENDERED REVEAL OFF WHITE

PINE LINING  
SOLID PINE PANELL'D  
DOOR  
PINE DOOR FRAME  
BEAD  
EXISTING RENDERED  
REVEAL EXTENDED  
TO GROUND

62 DOUGHTY ST  
NEW SIDE DOOR  
1/10 MAIN DRAWINGS  
DETAILS, FULL SIZE

DD



15

62 DOUGHTY ST.  
WALL INSULATION

1/5 PLAN

RECEIVED 26 JAN 2010

Outside

Existing brick wall

Existing plaster

Insulation

Metal studwork

Counter battens

Vapour barrier

Plasterboard

Skirting

Existing architraves re-used

Timber lining

Plasterboard

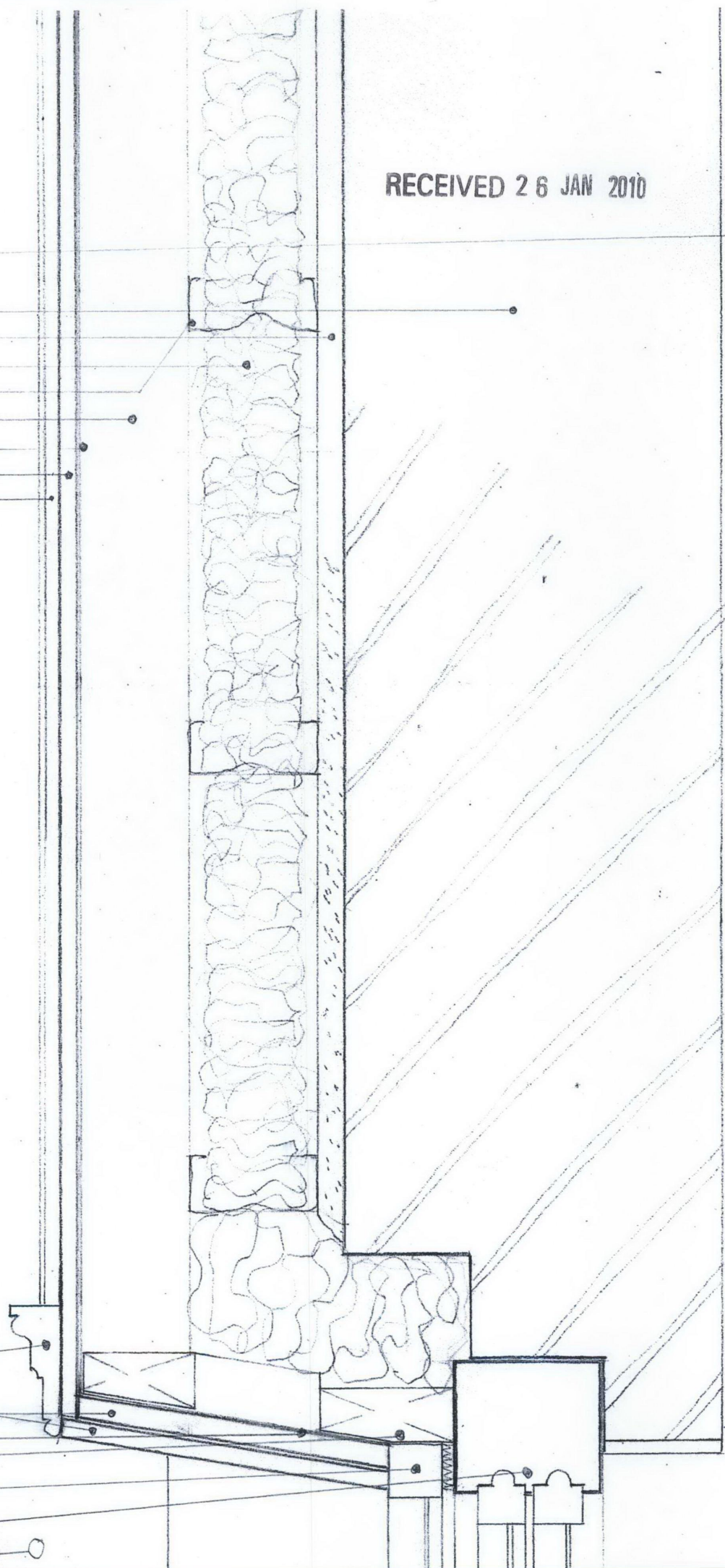
Vapour barrier

Studwork

Secondary glazing

Existing timber window frames

Inside

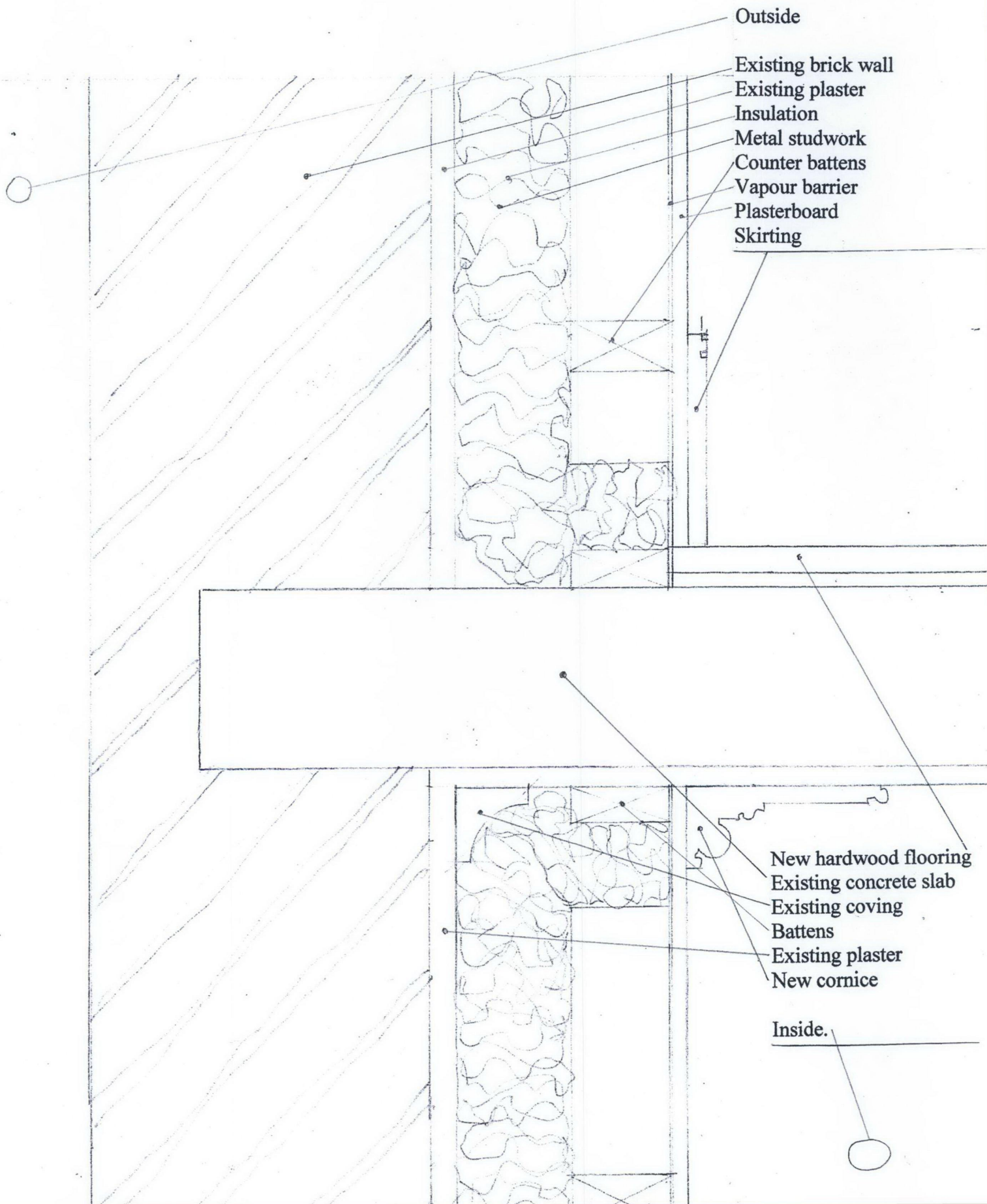


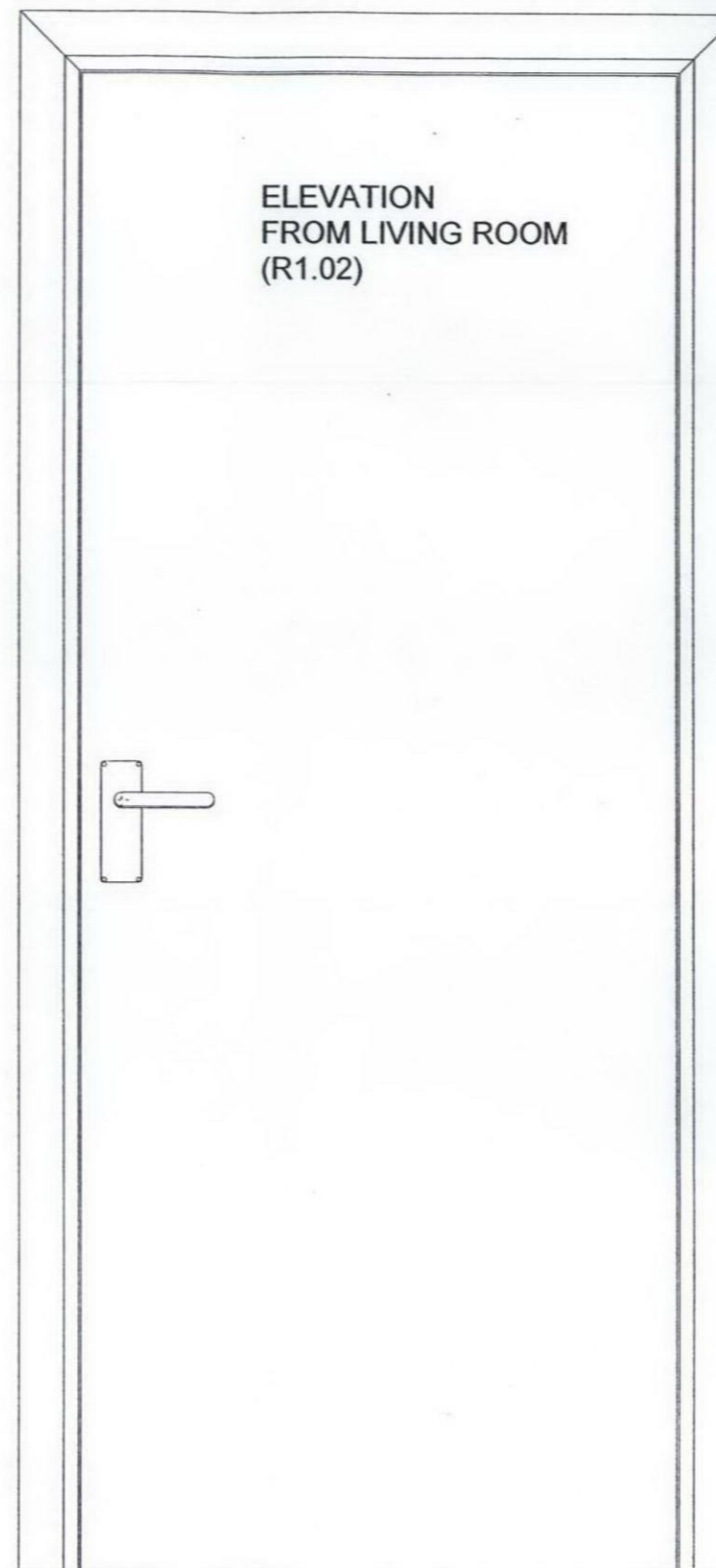
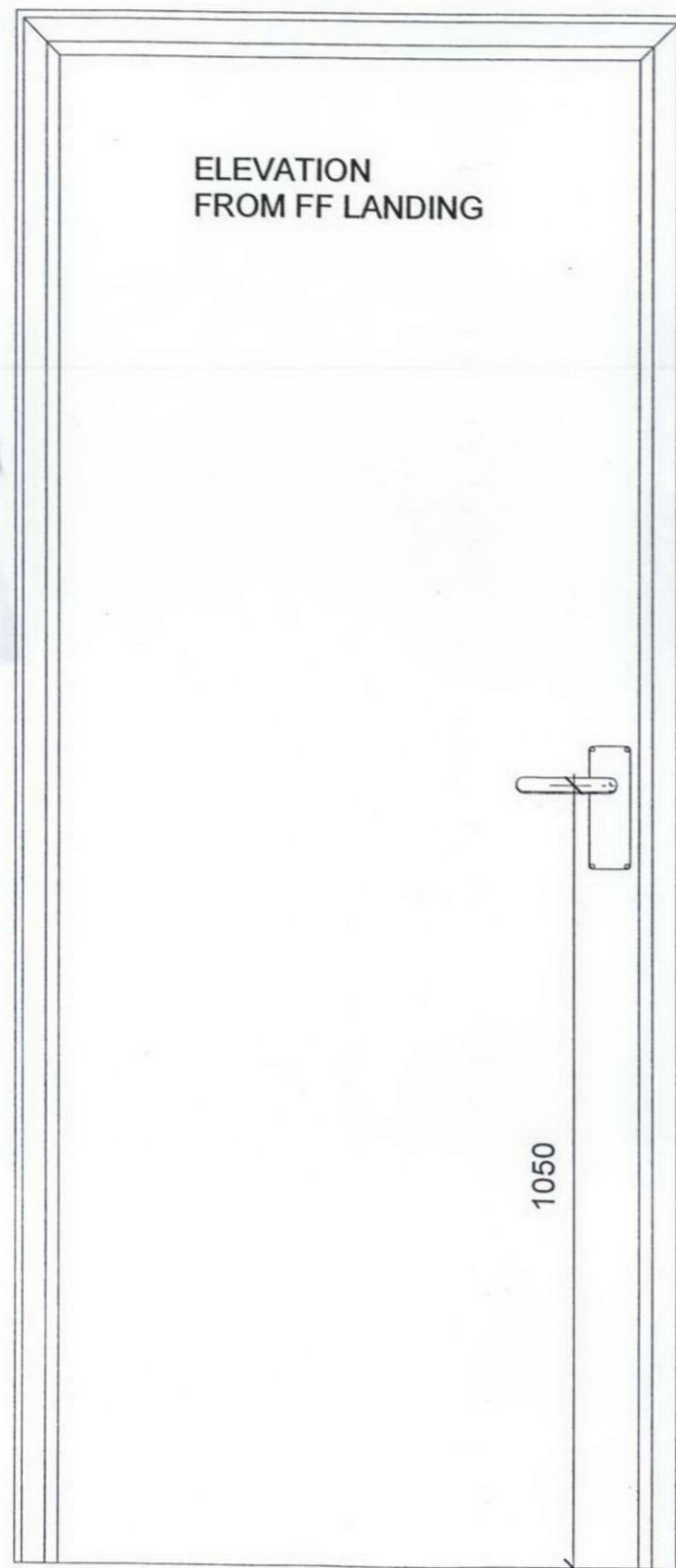
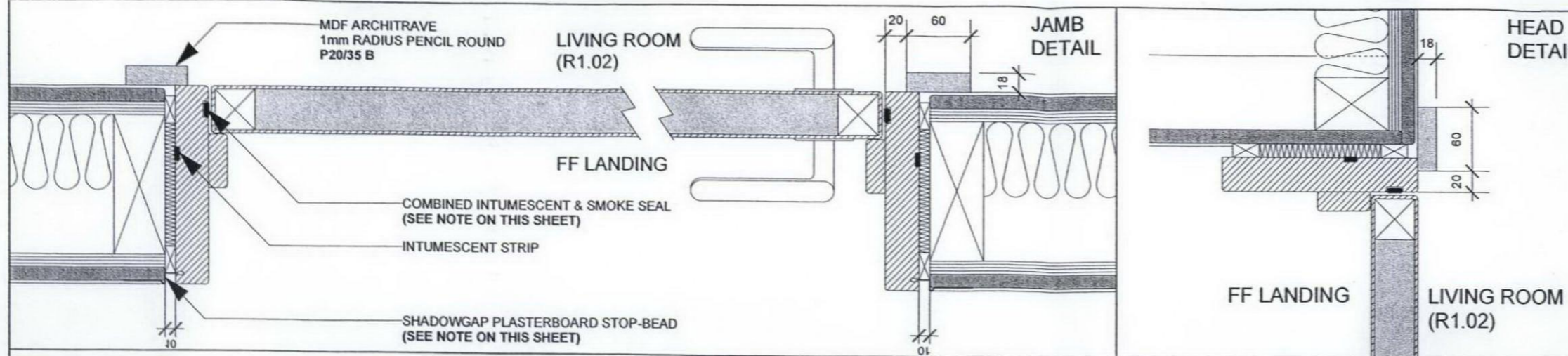
item 15, B

RECEIVED 26 JAN 2010

62 DOUGHTY ST.  
WALL INSULATION

1/5 SECTION



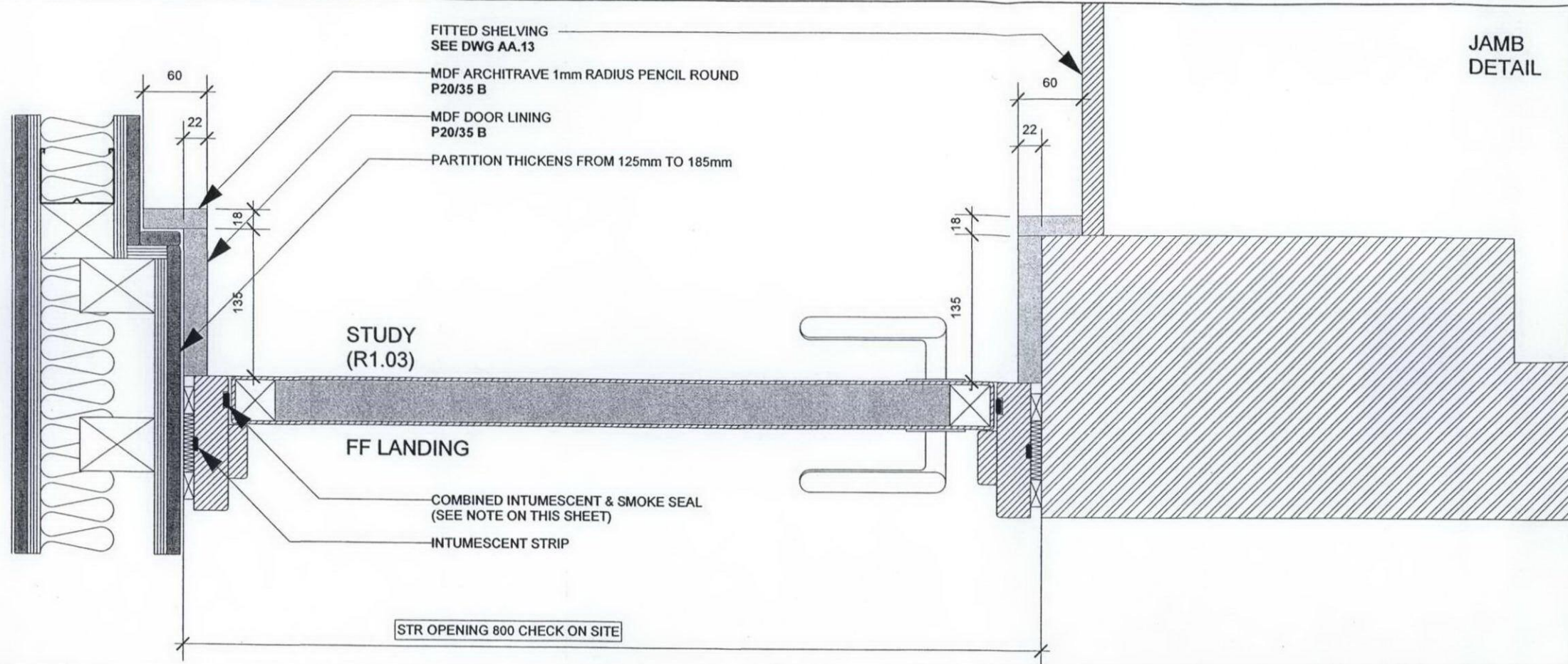


D1.01	DOOR AS L20/50 A
LOCATION	LIVING ROOM R1.02
PLAN & INTERNAL ELEV	AL 111 & AL 127, AL 128
FIRE RATING	30 MINUTES
ACCOUSTIC ATTENUATION	30dB
STR OPENING WxH	900x2080
FRAME SIZE WxH	880x2070
WIDTH FRAME/LEAF	185/44
LEAF	SOLID CORE: MDF FACED FACING TO MASTER LIPPINGS SQUARE FLUSH HARDWOOD LIPPINGS TO ALL EDGES; VERTICAL LIPPINGS TO MASTER HORIZONTAL; FACTORY PRIMED TO RECEIVE SITE PAINTED FINISHES AS SPECIFICATION M60/11 PRIMER SHOULD BE IN ACCORDANCE WITH BS 7956 AND APPROVED BY THE SITE FINISHING CONTRACTOR
FRAME	PLANED SOFTWOOD MITRED AT CORNERS; CLASS TO BS EN942; FACTORY PRIMED TO RECEIVE SITE PAINTED FINISHES AS SPECIFICATION M60/11; PRIMER SHOULD BE IN ACCORDANCE WITH BS 5082 & BS 5358 AND APPROVED BY THE SITE FINISHING CONTRACTOR
PRESERVATIVE TREATMENT	ORGANIC SOLVENT AS SECTION Z12 & BWPDA COMMODITY SPECIFICATION C5, DESIRED SERVICE LIFE 60 YEARS
MOISTURE CONTENT	6-10% ON DELIVERY
FIXING	PLUGGED AND SCREWED
PERIMETER SEALS	MANN McGOWAN PYROSTRIP FLEXIFIN TWIN 15x4mm IN BLACK PVC HOLDER TO THREE EDGES OF FRAME OR EQUIVALENT APPROVED TO ACHIEVE STATED PERFORMANCE
SHADOW GAPS FORMED WITH BRITISH GYPSUM 'STYLETRIM' BGM 106 (10mm DEEP)	SHADOWGAP BEADS TO CONNECT INTO ROUTED SLOT IN BACK OF FRAME PLEASE NOTE BUILDER'S TOLERANCE FOR THIS CONNECTION IS +/- 2mm
FINISH SPEC REF	M60/11
IRONMONGERY BY 'FORMAT' AS PER FORMAT IRONMONGERY SCHEDULE	HANDLE: MODEL - A4 PLATE/ROSE - (08 SASH LOCK WITH LEVER KEY) DIAMETER - 19mm FINISH - 04  HINGES: 3no S/S AS RECOMMENDED BY FORMAT FOR WEIGHT, SIZE AND FIRE RATING OF DOOR
DOOR CLOSER BY PERKINS & POWELL	PERKO CONCEALED CLOSER AS RECOMMENDED BY MANUFACTURER TO ACHIEVE STATED FIRE RATING
NOTES	STR OPENING HEAD HEIGHT = CEILING LEVEL IN FIRST FLOOR LANDING CONFIRM ON SITE  ARCHITRAVE ON LIVING ROOM SIDE ONLY: 18x60mm MDF SET IN 20mm FROM FRAME MITRED AT CORNERS

RECEIVED 26 JAN 2010

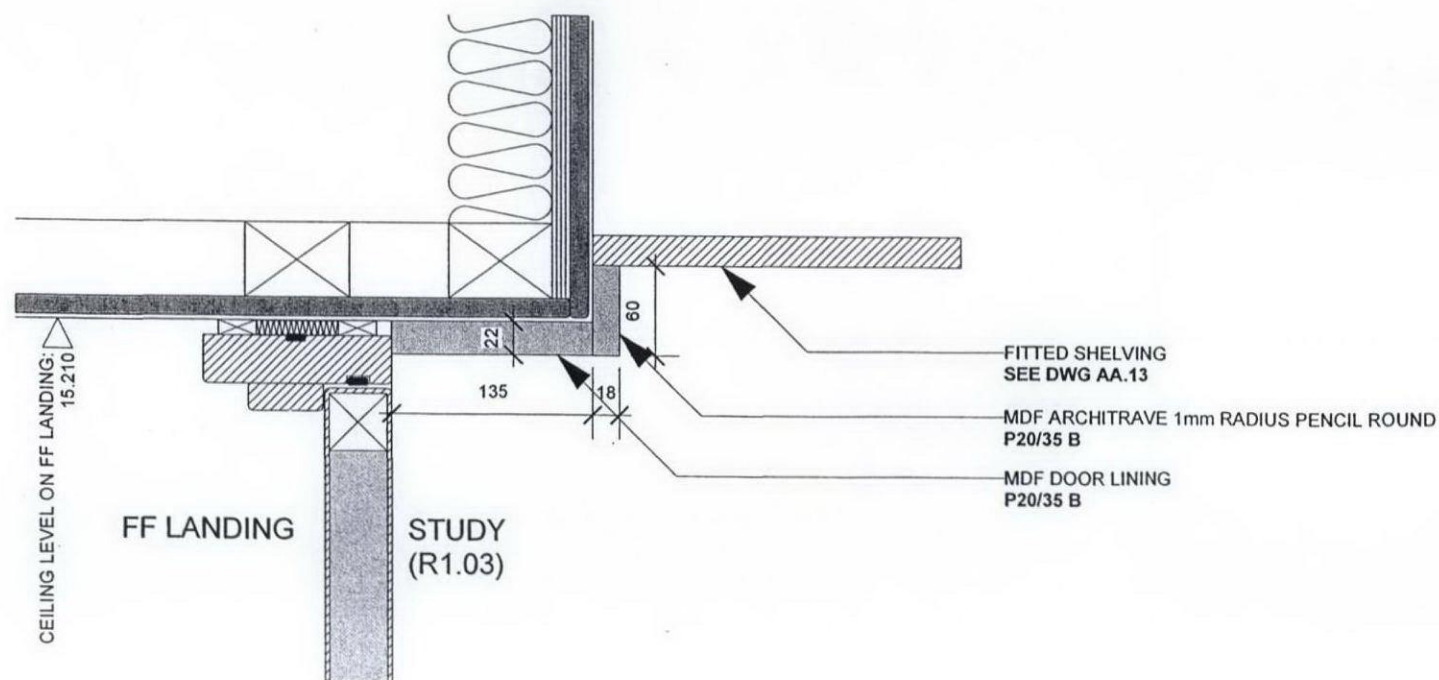
62 DOUGHTY ST.  
TYPICAL INTERNAL  
DOOR DETAILS.  
To be seen in context of photographic schedule

1.



# JAMB DETAIL

D1.02	DOOR AS L20/50 A
LOCATION	STUDY R1.03
PLAN & INTERNAL ELEV	AL.111 & AL.123, AL.124
FIRE RATING	30 MINUTES
ACCOUSTIC ATTENUATION	30dB
STR OPENING WxH	800x2080 *CHECK WIDTH ON SITE
FRAME SIZE WxH	820x2070 *CHECK WIDTH ON SITE
WIDTH FRAME/LEAF	125/44
LEAF	SOLID CORE; MDF FACED FACING TO MASTER LIPPINGS SQUARE FLUSH HARDWOOD LIPPINGS TO ALL EDGES; VERTICAL LIPPINGS TO MASTER HORIZONTAL; FACTORY PRIMED TO RECEIVE SITE PAINTED FINISHES AS SPECIFICATION M60/11 PRIMER SHOULD BE IN ACCORDANCE WITH BS 7956 AND APPROVED BY THE SITE FINISHING CONTRACTOR
FRAME	PLANED SOFTWOOD MITRED AT CORNERS; CLASS TO BS EN942; FACTORY PRIMED TO RECEIVE SITE PAINTED FINISHES AS SPECIFICATION M60/11; PRIMER SHOULD BE IN ACCORDANCE WITH BS 5082 & BS 5358 AND APPROVED BY THE SITE FINISHING CONTRACTOR
PRESERVATIVE TREATMENT	ORGANIC SOLVENT AS SECTION Z12 & BWPDA COMMODITY SPECIFICATION C5, DESIRED SERVICE LIFE 60 YEARS
MOISTURE CONTENT	6-10% ON DELIVERY
FIXING	PLUGGED AND SCREWED
PERIMETER SEALS	MANN MCGOWAN PYROSTRIP FLEXIFIN TWIN 15x4mm IN BLACK PVC HOLDER TO THREE EDGES OF FRAME OR EQUIVALENT APPROVED TO ACHIEVE STATED PERFORMANCE
SHADOW GAPS FORMED WITH BRITISH GYPSUM 'STYLETRIM' BGM 106 (10mm DEEP)	SHADOWGAP BEADS TO CONNECT INTO ROUTED SLOT IN BACK OF FRAME PLEASE NOTE BUILDER'S TOLERANCE FOR THIS CONNECTION IS +/- 2mm
FINISH SPEC REF	M60/11
IRONMONGERY BY 'FORMAT' AS PER FORMAT IRONMONGERY SCHEDULE	HANDLE: MODEL - A4 PLATE/ROSE - (08 SASH LOCK WITH LEVER KEY) DIAMETER - 19mm FINISH - 04  HINGES: 3no S/S AS RECOMMENDED BY FORMAT FOR WEIGHT, SIZE AND FIRE RATING OF DOOR
DOOR CLOSER BY PERKINS & POWELL	PERKO CONCEALED CLOSER AS RECOMMENDED BY MANUFACTURER TO ACHIEVE STATED FIRE RATING
NOTES	STR OPENING HEAD HEIGHT = CEILING LEVEL IN FF LANDING STR OPENING WIDTH SET BY EXISTING MASONRY PIER & LINE OF EXISTING PARTITION CONFIRM BOTH ON SITE  SEE ALSO FITTED SHELVEING DRAWING AA.13



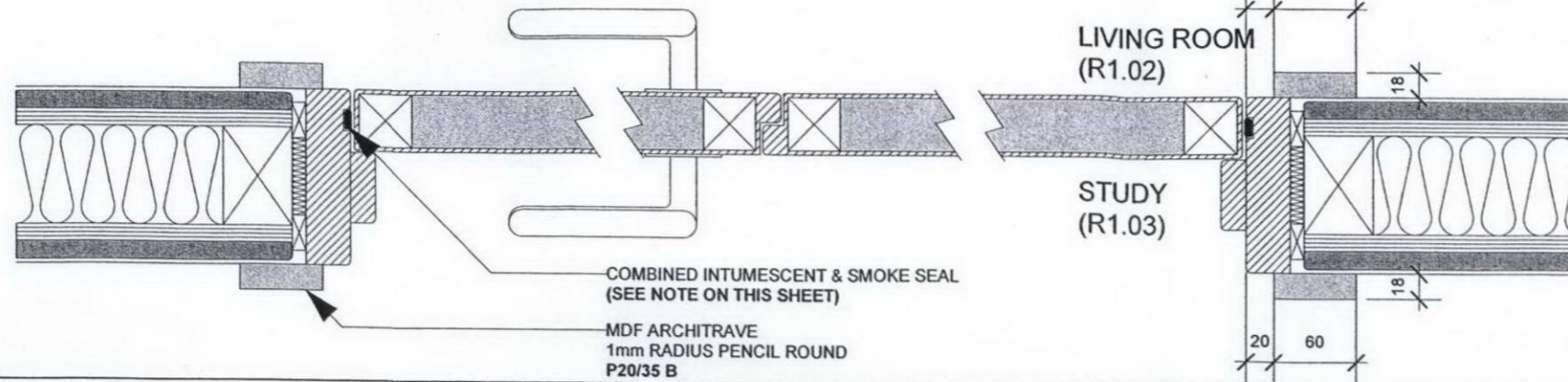
# HEAD DETAIL

RECEIVED 26 JAN 2010

62 DOUGHTY ST.  
TYPICAL INTERNAL  
DOOR DETAILS.  
To be seen in context of photographic schedule

1/5 1/10

Ken 16  
2.  
01 2010.



# JAMB DETAIL

D1.03	DOOR AS L20/50 B
LOCATION	LIVING ROOM R1.02
PLAN & INTERNAL ELEV	AL 111 & AL 127, AL 128
FIRE RATING	NONE
ACCOUSTIC ATTENUATION	30dB
STR OPENING WxH	1715x2080
FRAME SIZE WxH	1695x2070
WIDTH FRAME/LEAF	125/44
LEAF	SOLID CORE; MDF FACED FACING TO MASTER LIPPINGS SQUARE FLUSH HARDWOOD LIPPINGS TO ALL EDGES; VERTICAL LIPPINGS TO MASTER HORIZONTAL; FACTORY PRIMED TO RECEIVE SITE PAINTED FINISHES AS SPECIFICATION M60/11; PRIMER SHOULD BE IN ACCORDANCE WITH BS 7956 AND APPROVED BY THE SITE FINISHING CONTRACTOR
FRAME	PLANED SOFTWOOD MITRED AT CORNERS; CLASS TO BS EN942; FACTORY PRIMED TO RECEIVE SITE PAINTED FINISHES AS SPECIFICATION M60/11; PRIMER SHOULD BE IN ACCORDANCE WITH BS 5082 & BS 5358 AND APPROVED BY THE SITE FINISHING CONTRACTOR
PRESERVATIVE TREATMENT	ORGANIC SOLVENT AS SECTION Z12 & BWPDA COMMODITY SPECIFICATION C5, DESIRED SERVICE LIFE 60 YEARS
MOISTURE CONTENT	6-10% ON DELIVERY
FIXING	PLUGGED AND SCREWED
PERIMETER SEALS	MANN McGOWAN PYROSTRIP FLEXIFIN TWIN 15x4mm IN BLACK PVC HOLDER TO THREE EDGES OF FRAME OR EQUIVALENT APPROVED TO ACHIEVE STATED PERFORMANCE
SHADOW GAPS	NONE
FINISH SPEC REF	M60/11
IRONMONGERY BY 'FORMAT' AS PER FORMAT IRONMONGEY SCHEDULE	HANDLE: MODEL - A4 PLATE/ROSE - (08 SASH LOCK WITH LEVER KEY) DIAMETER - 19mm FINISH - 04  HINGES: 3no S/S AS RECOMMENDED BY FORMAT FOR WEIGHT, SIZE AND FIRE RATING OF DOOR  REBATE LATCH UNIT: FLOOR BOLTS TO RETAIN SLAVE LEAF IN CLOSED POSITION AND BOTH LEAVES IN OPEN POSITION 2no DOOR STOPS
NOTES	STR OPENING HEAD HEIGHT = CEILING LEVEL IN FF LANDING CONFIRM ON SITE (AS D1.02) SEE ALSO FITTED SHELVE DRAWING AA.13  REBATED MEETING STILE

RECEIVED 26 JAN 2010

62 DOUGHTY ST.  
TYPICAL INTERNAL  
DOOR DETAILS.  
To be seen in context of photographic schedule

Ken 16  
3.

1/5 1/10

01 2010.

## ELEVATION FROM LIVING ROOM (R1.02)

1050

FITTED SHELVING  
SEE DWG AA.13

MDF ARCHITRAVE  
1mm RADIUS PENCIL ROUND  
P20/35 B

STUDY  
(R1.03)

LIVING ROOM  
(R1.02)

ELEVATION  
FROM STUDY  
(R1.03)

1050

# HEAD DETAIL

D1.03	DOOR AS L20/50 B
LOCATION	LIVING ROOM R1.02
PLAN & INTERNAL ELEV	AL.111 & AL.127, AL.128
FIRE RATING	NONE
ACCOUSTIC ATTENUATION	30dB
STR OPENING WxH	1715x2080
FRAME SIZE WxH	1695x2070
WIDTH FRAME/LEAF	125/44
LEAF	SOLID CORE; MDF FACED FACING TO MASTER LIPPINGS SQUARE FLUSH HARDWOOD LIPPINGS TO ALL EDGES; VERTICAL LIPPINGS TO MASTER HORIZONTAL; FACTORY PRIMED TO RECEIVE SITE PAINTED FINISHES AS SPECIFICATION M60/11 PRIMER SHOULD BE IN ACCORDANCE WITH BS 7956 AND APPROVED BY THE SITE FINISHING CONTRACTOR
FRAME	PLANED SOFTWOOD MITRED AT CORNERS; CLASS TO BS EN942; FACTORY PRIMED TO RECEIVE SITE PAINTED FINISHES AS SPECIFICATION M60/11; PRIMER SHOULD BE IN ACCORDANCE WITH BS 5082 & BS 5358 AND APPROVED BY THE SITE FINISHING CONTRACTOR
PRESERVATIVE TREATMENT	ORGANIC SOLVENT AS SECTION Z12 & BWPDA COMMODITY SPECIFICATION C5, DESIRED SERVICE LIFE 60 YEARS
MOISTURE CONTENT	6-10% ON DELIVERY
FIXING	PLUGGED AND SCREWED
PERIMETER SEALS	MANN MCGOWAN PYROSTRIP FLEXIFIN TWIN 15x4mm IN BLACK PVC HOLDER TO THREE EDGES OF FRAME OR EQUIVALENT APPROVED TO ACHIEVE STATED PERFORMANCE
SHADOW GAPS	NONE
FINISH SPEC REF	M60/11
IRONMONGERY BY 'FORMAT' AS PER FORMAT IRONMONGEY SCHEDULE	HANDLE: MODEL - A4 PLATE/ROSE - (08 SASH LOCK WITH LEVER KEY) DIAMETER - 19mm FINISH - 04  HINGES: 3no S/S AS RECOMMENDED BY FORMAT FOR WEIGHT, SIZE AND FIRE RATING OF DOOR  REBATE LATCH UNIT: FLOOR BOLTS TO RETAIN SLAVE LEAF IN CLOSED POSITION AND BOTH LEAVES IN OPEN POSITION 2no DOOR STOPS
NOTES	STR OPENING HEAD HEIGHT = CEILING LEVEL IN FF LANDING CONFIRM ON SITE  SEE ALSO FITTED SHELVING DRAWING AA.13  REBATED MEETING STILE

62 DOUGHTY ST.  
TYPICAL INTERNAL  
DOOR DETAILS.  
To be seen in context of photographic schedule

1/5 1/10 RECEIVED 26 JAN 2010 01 2010.

Item 16  
4.

item 17 TYPICAL NEW WINDOW IN EXISTING OPENINGS EXPOSED BY REMOVAL OF  
FLAT ASPHALT ROOF OVER GROUND FLOOR TO RECREATE COURTYARD.  
Scale 1/10, details 1/5

17

62 DOUGHTY ST.

