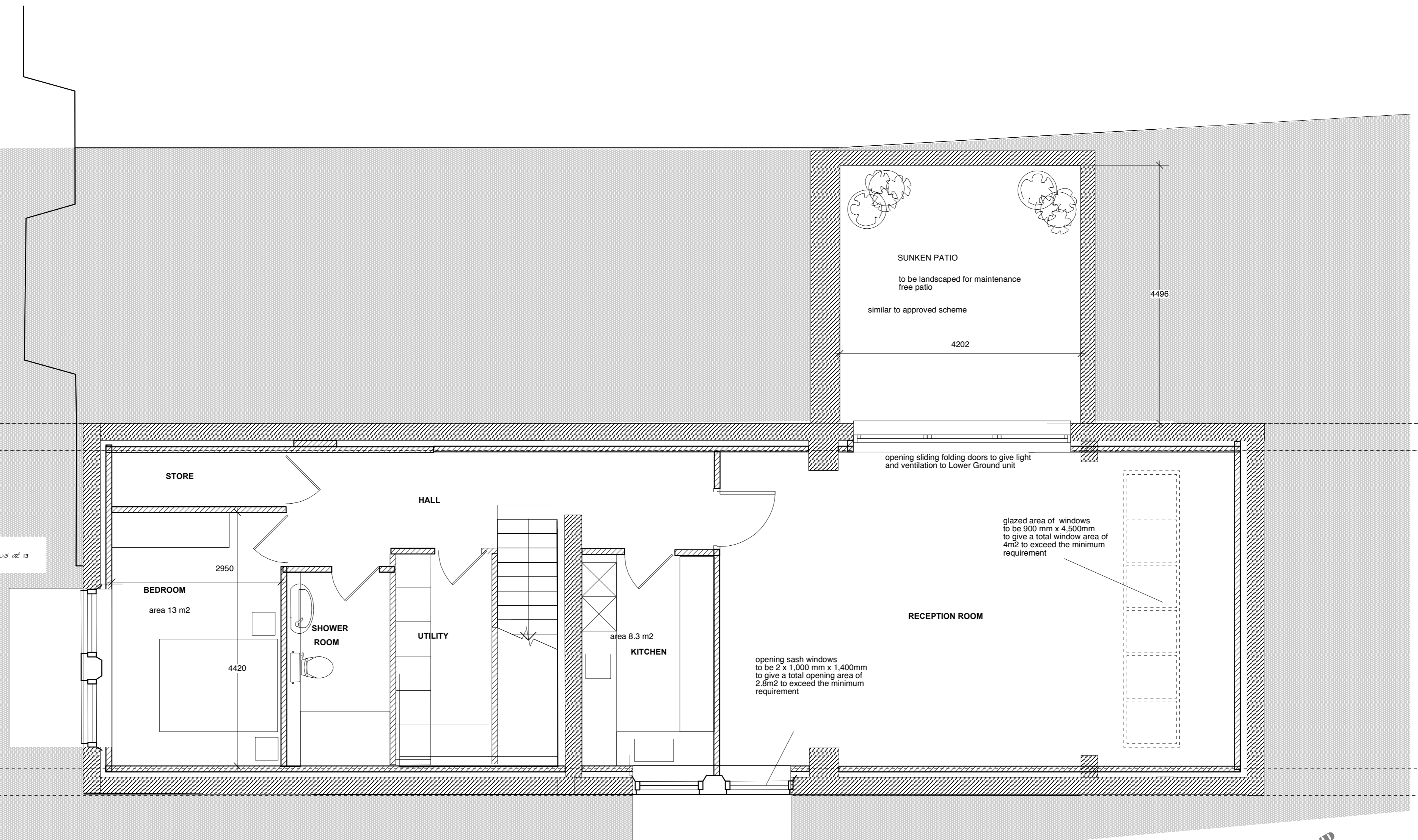


new timber sash windows
to copy the Ground floor windows at 13
Heath Drive.

The area of natural light
should be 10% of the floor
area. i.e. 1.3m²

see drawing 09 Rev A
for details



BASEMENT UNIT

PROPOSED BASEMENT PLAN

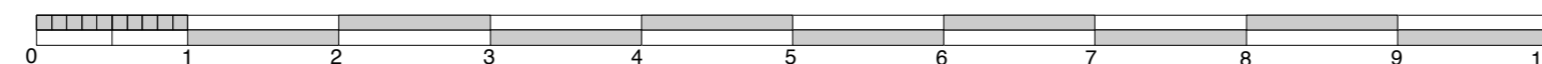
AS APPROVED 2009/5153/P
18 JANUARY 2010

PROPOSED LOWER GROUND

14 HEATH DRIVE HAMPSTEAD LONDON NW3 7SN

Scale: 1: 50 @ A2 size
Date : Nov 2009

Drawing No. 06. 738.24
PROPOSED FLOOR PLAN



G J P L t d

ARCHITECTS

764 FINCHLEY ROAD
TEMPLE FORTUNE
NW11 LONDON 7TH

TEL 020 8458 4326
FAX 020 8458 4322
MOB 07721 596207

gjp @ architect59.fsnet.co.uk