

Melbourn

Interlocking slates

Melbourn fishing village, Portlaoise



Melbourn colour availability



Melbourn Grey (H)

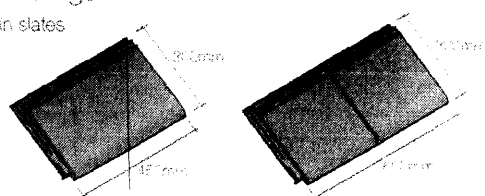
→ Samples

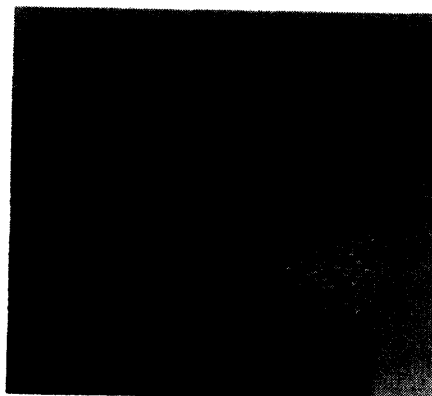
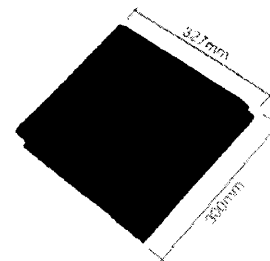
web marleytemit.co.uk/samples
Tel 01283 722588

Key (R) Riven Finish

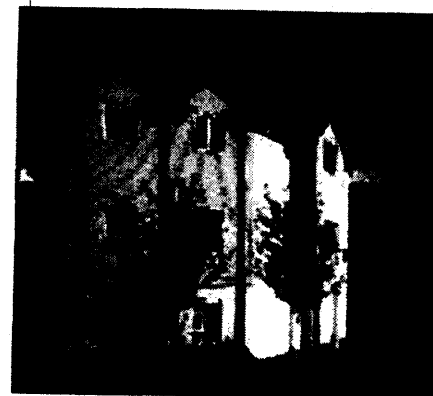
Melbourn fittings

To match main slates





Melbourn, Madestone, Kent



Melbourn, Fishing Village, Porthcress

A lightweight product that closely resembles natural slate, but is easier and faster to install.



Technical data

Size of slate	300mm x 327mm
Effective cover	300mm x 250mm
Minimum pitch*	15°
Maximum pitch	90°
Minimum headlap	50mm (20° and above) 65mm (below 20°)
Maximum gauge	250mm (50mm headlap) 235mm (65mm headlap)
Cover width	300mm (nominal)
Hanging length	296mm (nominal)
Covering capacity (net)	13.3 slates/m ² at 50mm headlap 14.2 slates/m ² at 65mm headlap
Weight of slating (approx.)	15.3kg/m ² (0.15 kN/m ²) at 50mm headlap 16.5kg/m ² (0.16 kN/m ²) at 65mm headlap
Battens required (net)	4.0 lin. m/m ² at 50mm headlap 4.4 lin. m/m ² at 65mm headlap
Batten size recommended	50 x 25mm for rafters/supports not exceeding 600mm centres (fixed to BS 5534)
Slate nails	35mm x 2.65mm stainless steel ring shank
Fixing clips	Eaves, verge and valley clips
Authority	Agreement Certificate No. 00/3702

* The minimum recommended pitch and lap may be influenced by special circumstances, please refer to pages 16, 26-27 of the Design Considerations section.

Melbourn should be laid broken bond. The required broken bond pattern is created by the introduction of slate and a-half slates to form verges in alternate courses.

All Melbourn slates laid on roof pitches 15°-24° should be twice nailed and on roof pitches 25°-90° should be twice nailed in accordance with the recommended fixing procedure. This specification is the minimum requirement and should be confirmed for specific projects by contacting the Technical Advisory Service or by reference to the Melbourn Fixing Tables in the Markley Eternit Zonal Fixing Methods User's Guide.

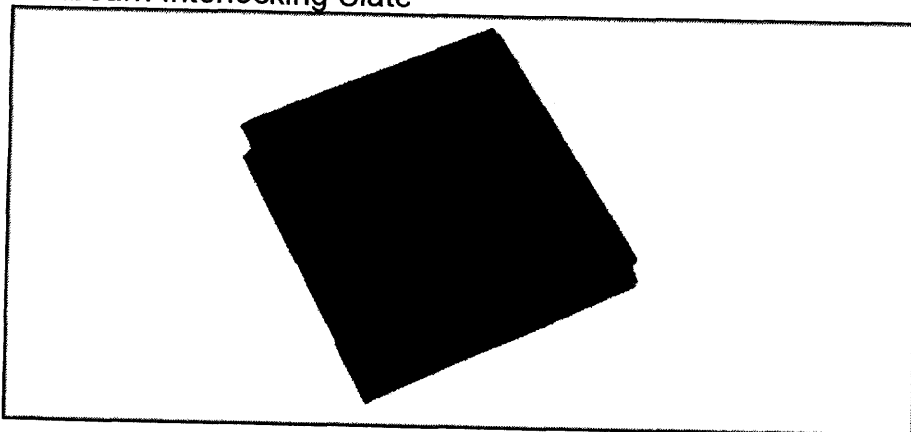


Search

Go

[Home](#) [Products](#) [News](#) [Environment](#) [Our Company](#) [Careers](#) [Contact Us](#)
[Home](#) > [Products](#) > [Tiles & Slates](#) > [Slates](#) > [Melbourne Interlocking Slate](#)
[Home](#) > [Products](#) > [Tiles & Slates](#) > [Slates](#) > [Melbourne Interlocking Slate](#)
[Clay Tiles](#)
[Concrete Tiles](#)
[Slates](#)

Melbourne Interlocking Slate



Description

The Melbourne reconstituted slate has been developed to provide a lightweight product that closely resembles natural slate in composition and appearance, but is easier and simpler to install. The Melbourne interlocking slate roofing system has one of the fastest slate fixing methods which makes for economical installation costs.

Melbourne can achieve an 'A' rating (the lowest environmental impact) in the Building Research Establishment's Green Guide to Specification.

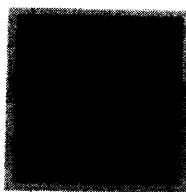
Advantages

- Reconstituted slate to resemble natural slate.
- Lightweight product.
- Quick and easy to install.

Similar products

[Rivendale](#)

Colours



Melbourne Grey

- Overview
- Technical Data
- Environmental Data
- Fittings
- Ventilation
- Dry Fix Systems
- Universal Accessories
- Next Steps
 - [Request a Brochure](#)
 - [Request a Sample](#)
 - [Request a Health & Safety Data Sheet](#)
 - [Find a Stockist](#)
 - [Read Case Study](#)
- Downloads
 - [Fixing Guide \(PDF\)](#)
 - [Zonal Method Fixing Table \(PDF\)](#)
 - [Brochure \(PDF\)](#)

[Terms & Conditions](#) [Accessibility Statement](#) [Site Map](#)