

# VITOSOL

# VIESSMANN

Solar Thermal Energy

Flat & Tube Panel Standard Kits

Installation Overview



There are currently four Viessmann solar kits available from selected merchants throughout the UK.

## Vitosol 100 Flat Panel Kits:

### 1 Panel Kit

Part Number SK00361

Suitable for 1-2 person households



#### Components

1 x Panel	7188383
1 x Rails & Battens fixing kit	7188482
1 x Indoor Pack	Z004731
1 x Roof Pack	Z004752
1 x Tyfocor	7179027

### 2 Panel Kit

Part Number SK00363

Suitable for 3-5 person households



2 x Panel	7188383
1 x Rails & Battens fixing kit	7188483
1 x Indoor Pack	Z004731
1 x Roof Pack	Z004753
1 x Tyfocor	7179027

**NB: Colour-coded edge strips and flat panels that integrate into the roof tiles are also available.**

**Please telephone for more details.**

## Vitosol 200 Vacuum Tube Collectors:

### 20 Tube Kit

Part Number SK00365

Suitable for 1-2 person households

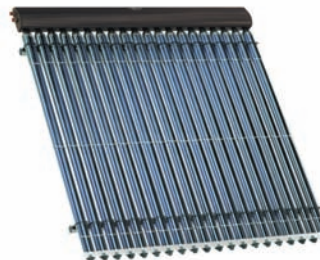


2 x Boxes of Tubes	7188857
1 x Manifold	7188858
1 x Rails & Battens fixing kit	7186230
1 x Indoor Pack	Z004731
1 x Roof Pack	Z004730
1 x Tyfocor	7179027

### 30 Tube Kit

Part Number SK00366

Suitable for 3-5 person households



3 x Boxes of Tubes	7188857
1 x Manifold	7188859
1 x Rails & Battens fixing kit	7186230
1 x Indoor Pack	Z004731
1 x Roof Pack	Z004730
1 x Tyfocor	7179027

**Please make sure you read all of the detailed installation instructions, install the necessary lifting equipment and comply with all the relevant health and safety regulations.**

**REMEMBER - Incorrectly installed solar panels can be dangerous!**

**If you need any help or advice on the sizing, selection or installation of Viessmann solar thermal systems, please call the technical helpline on 01952 675070**

THIS LEAFLET DOES NOT REPLACE MANUFACTURERS  
INSTALLATION INSTRUCTIONS WHICH ARE SUPPLIED WITH  
MAJOR COMPONENTS AND MUST BE READ IN  
CONJUNCTION WITH THIS OVERVIEW.

#### Accessories Available

1. Hand Fill Pump	7188624
2. Flexi flow & return pipes (12m long)	7317009

For all installations (Tube & Flat panels), follow the first 5 stages below, then continue to the relevant section. Internal installation & commissioning are detailed on the back page.

### Health & Safety

At all stages take care to abide by Health & Safety Legislation and install all the necessary lifting and safety equipment prior to installation - remember the flat panels weigh 52kg each!

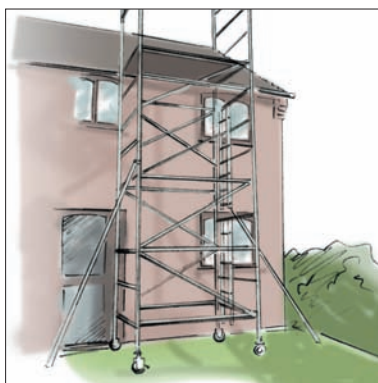
## EXTERNAL INSTALLATION: FLAT & TUBE PANELS

(Stages 1-5)

### Positioning

In addition to finding the best position to capture the sun's energy, place the panels where you can pass the pipework through the roof for internal connection.

At each stage, the part numbers are given.



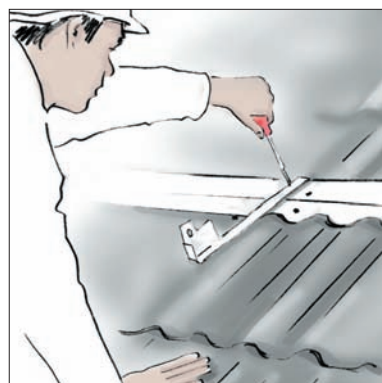
1. Erect necessary lifting & safety equipment.



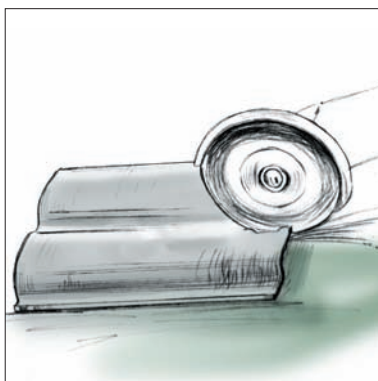
2. Measure roof & remove tiles.



3. Fix timber battens to joists.  
7188482/7188483/7186230



4. Fix brackets to battens.  
7181512/7317115



5. Cut tiles & replace.

**For flat panel installation  
continue over.**

**For tube systems turn to page 10.**



**TUBE SYSTEMS**

(Stages 6-15)

Vitosol Tube Panels offer amazing flexibility. Remember to rotate the individual tubes for the best performance, if necessary.



**6.** Attach rails to brackets.  
7186230



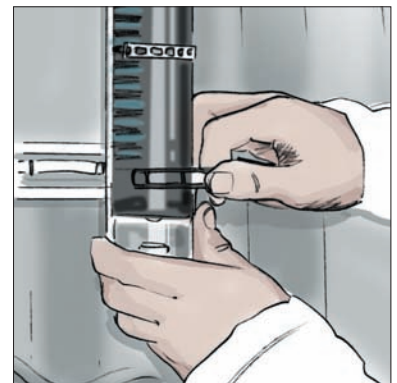
**7.** Fix header to rails.  
7188858/7188859



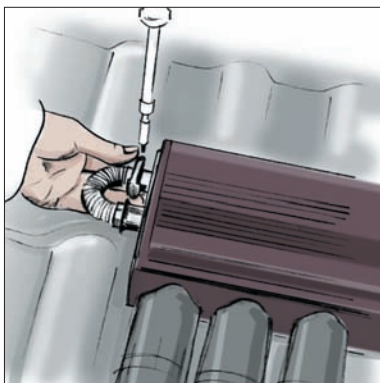
**8.** Attach tube holders.  
7188858/7188859



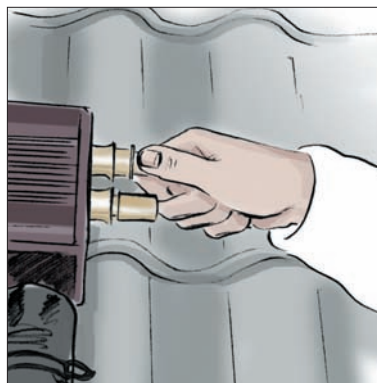
**9.** To insert tubes rotate & push gently until they lock into position.  
7188857



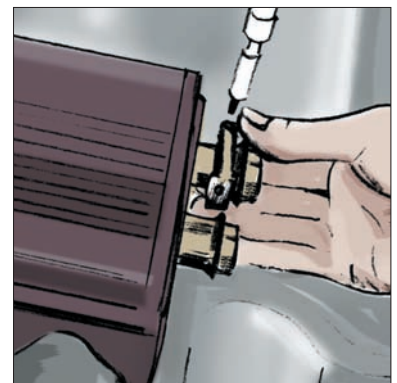
**10.** Secure with rubber clips.  
7188857



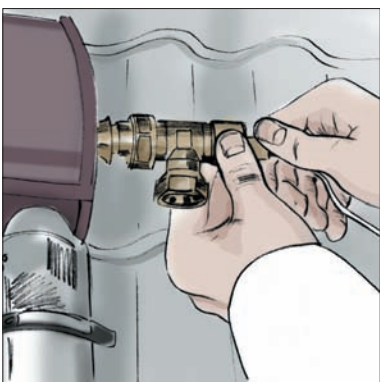
**11.** Insert U-bend clip and then fit cover.  
7188621



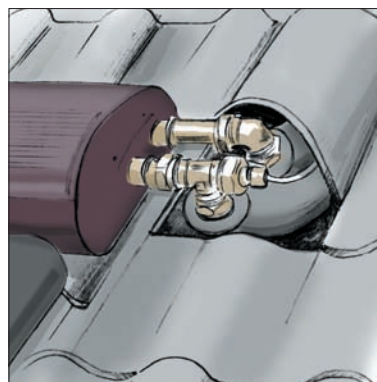
**12.** Insert flow & return pipes.  
7188621



**13.** Secure with clips.  
7188621



**14.** Insert temperature sensor and fix T-connection.  
7188622



**15.** Pass pipework through vent tile, or suitable flashing ready for connection.  
7316252



**16.** External installation is now complete.

**See opposite for Internal Connections for both tube & flat panels.**



Viessmann Limited  
Hortonwood 30,  
Telford,  
Shropshire  
TF1 7YP  
United Kingdom  
Tel: +44 (0)1952 675000  
Fax: +44 (0)1952 675040  
[www.viessmann.co.uk](http://www.viessmann.co.uk)