

# For 8 Residential Units

Amended  
4/3/10

## GENERAL NOTES

All dimensions are in millimetres

## REVISION

A. DEC 09 Add Annotation and Internal Layout Details  
B. MAR 10 Add walkover paving light at the corner of forecourt for flat 2  
C. MAR 10 Remove walkover paving light at the corner of forecourt for flat 2 below

Ko and Partners

Project: 165 GRAY'S INN ROAD, LONDON WC1X 8UE

FOR APPROVAL

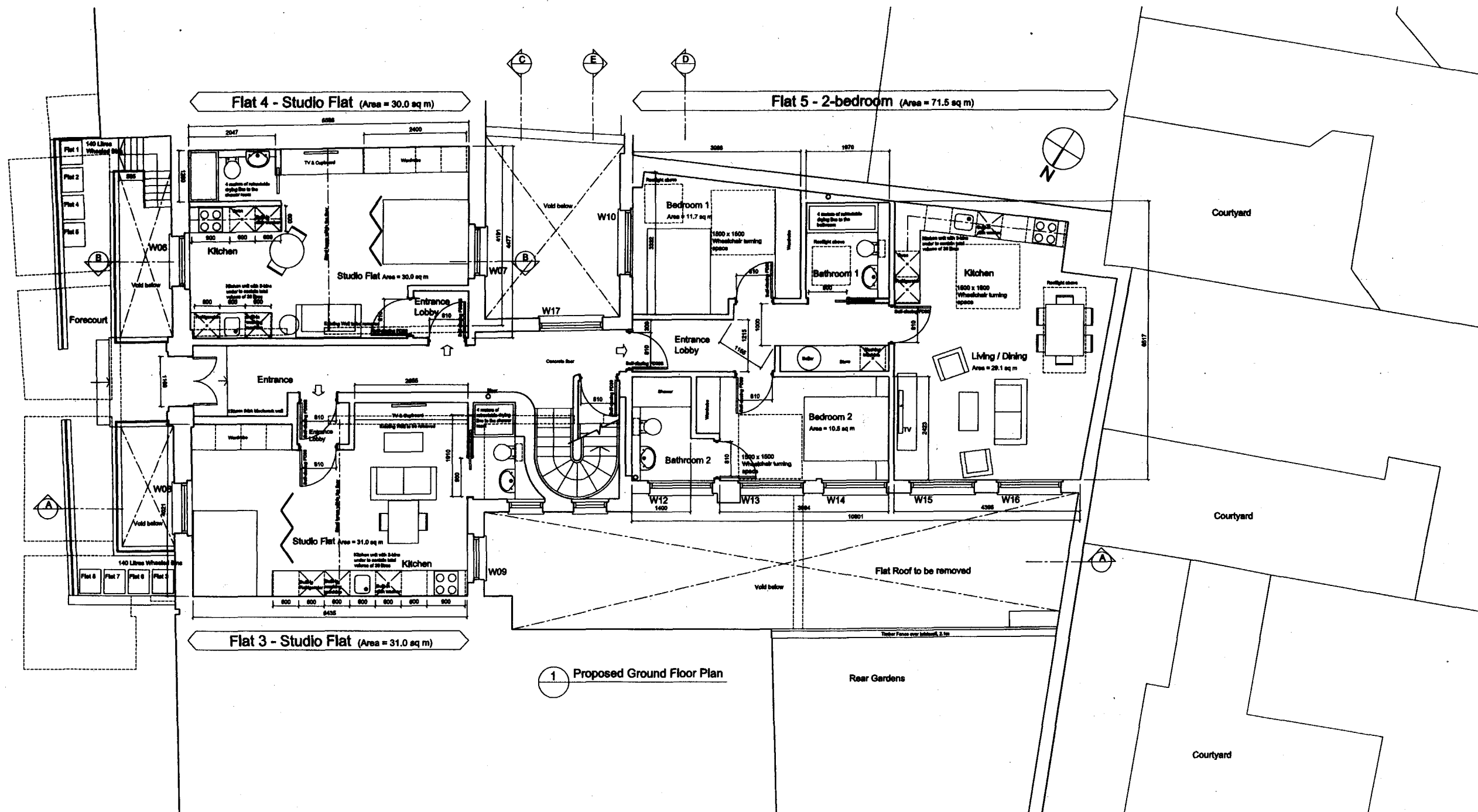
Unit 6  
1-3 Upper Richmond Road  
London SW16 2RP  
T: 020 8674 0766  
F: 020 762 3742  
E: postbox@koandpartners.co.uk

PROPOSED GROUND FLOOR PLAN

342-A-021  
Date: MAR 10

Revision: 1:50@AT

Client: Edenfield Estates Ltd



1 Proposed Ground Floor Plan