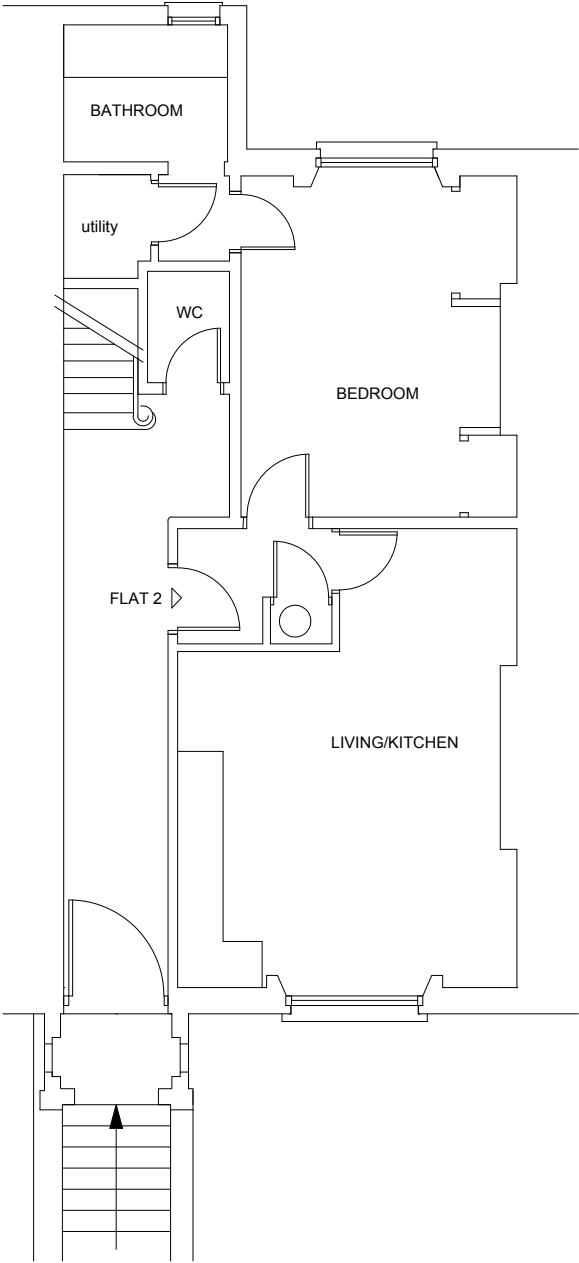
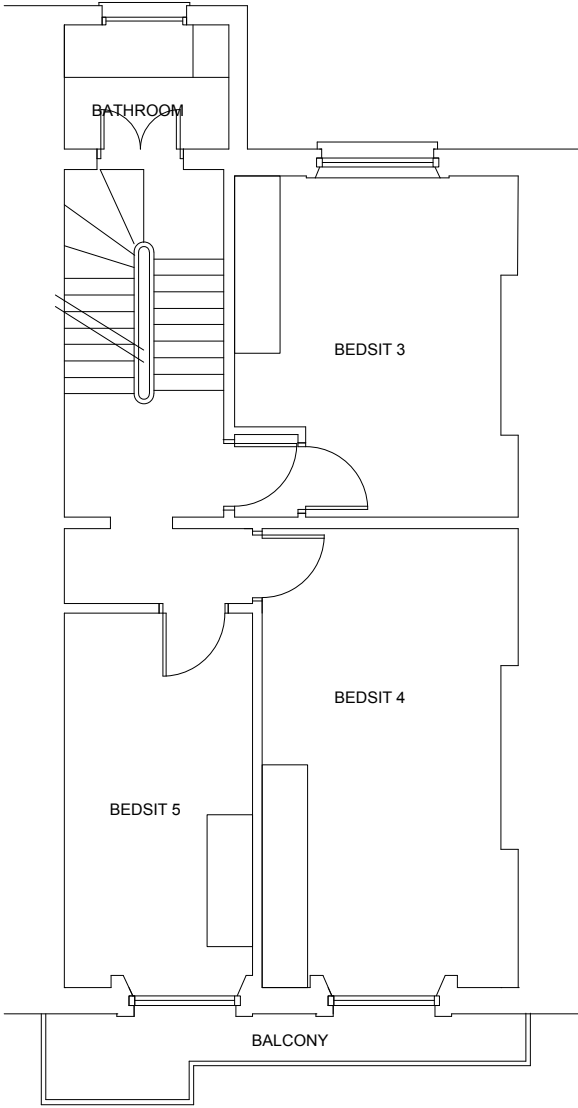


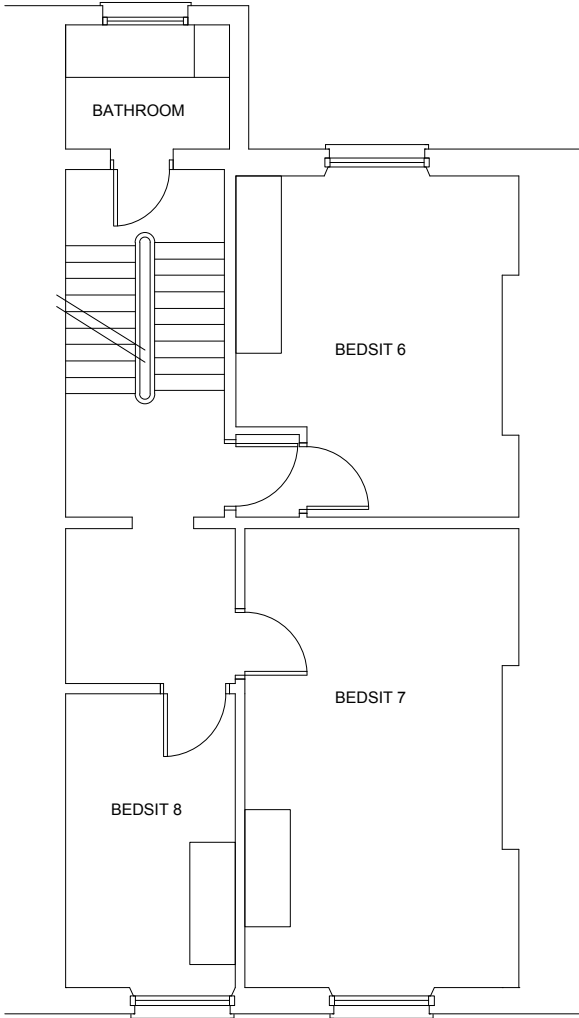
BASEMENT PLAN



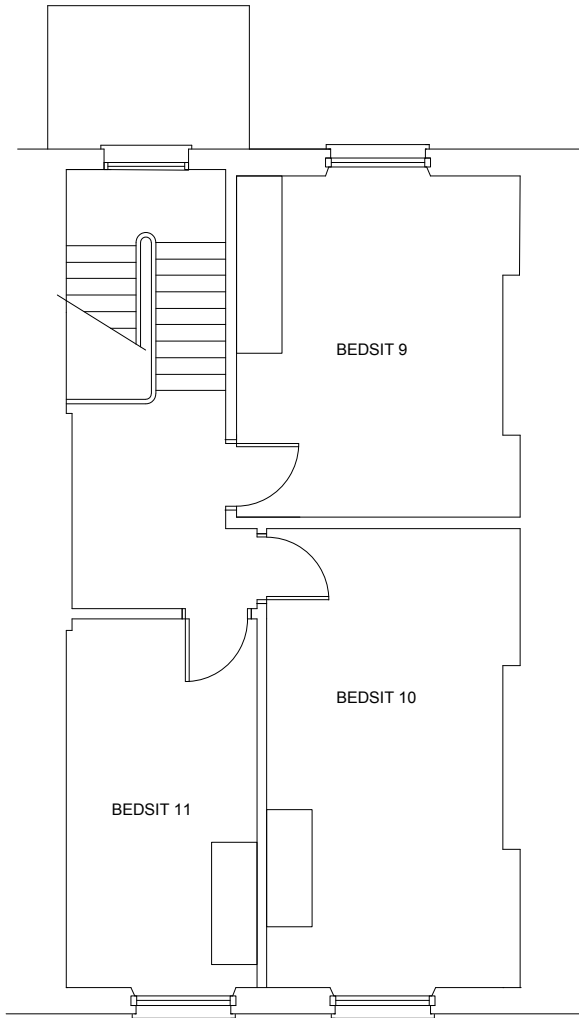
GROUND FLOOR PLAN



FIRST FLOOR PLAN



SECOND FLOOR PLAN



THIRD FLOOR PLAN

NO	REVISION	DATE	<div><div>SCALE</div><div><div><div></div><div></div><div></div><div></div><div></div><div></div><div></div><div></div><div></div><div></div></div><div>012345</div><div>M</div></div></div>	title: <b>EXISTING FLOOR PLANS</b>		scale: 1:100 @ A3
				job: 17 COLLEGE CRESCENT, NW3    client: BRODIE GROUP		date: SEPT 2009
			<b>NB</b> - THIS DRAWING IS PREPARED FOR TOWN PLANNING PURPOSES ONLY - REVISIONS MAY BE REQUIRED FOR BUILDING REGULATIONS & CONSTRUCTIONS PURPOSES - ALL EXTERNAL CHANGES SHOULD BE REFERRED TO THE LOCAL PLANNING AUTHORITY - EXTG PLANS BASED ON PREVIOUSLY SUBMITTED PLANNING DRAWINGS	<b>M I C H A E L P H I L L I P S   A S S O C I A T E S</b> CHARTERED ARCHITECTS		drg no: <b>0905 / EX1A</b>
				24 Elmbourne Road, London SW17 8JR - T: (020) 8673 4395 - F: (020) 8673 5018 - W: www.bp-architects.co.uk		