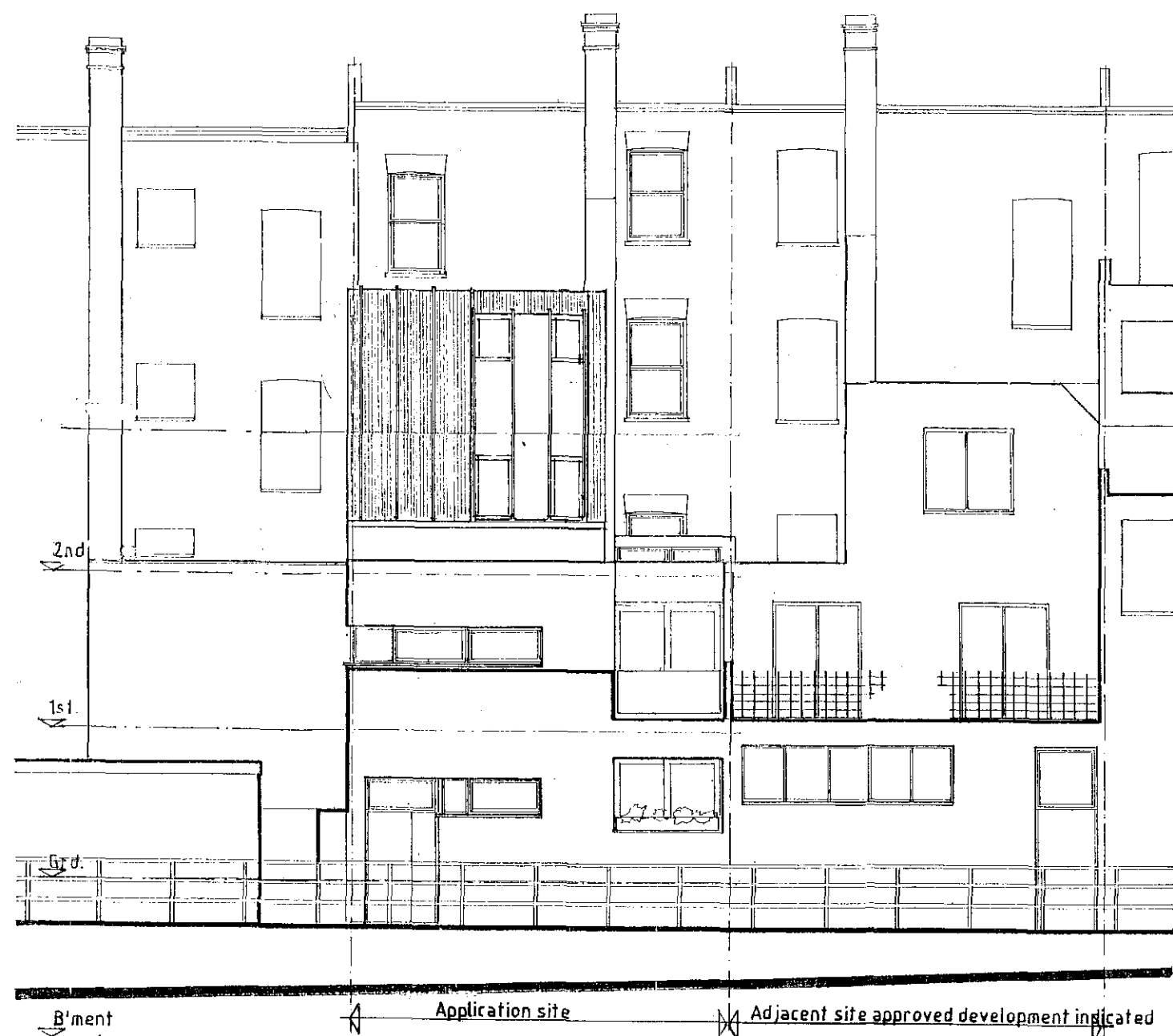
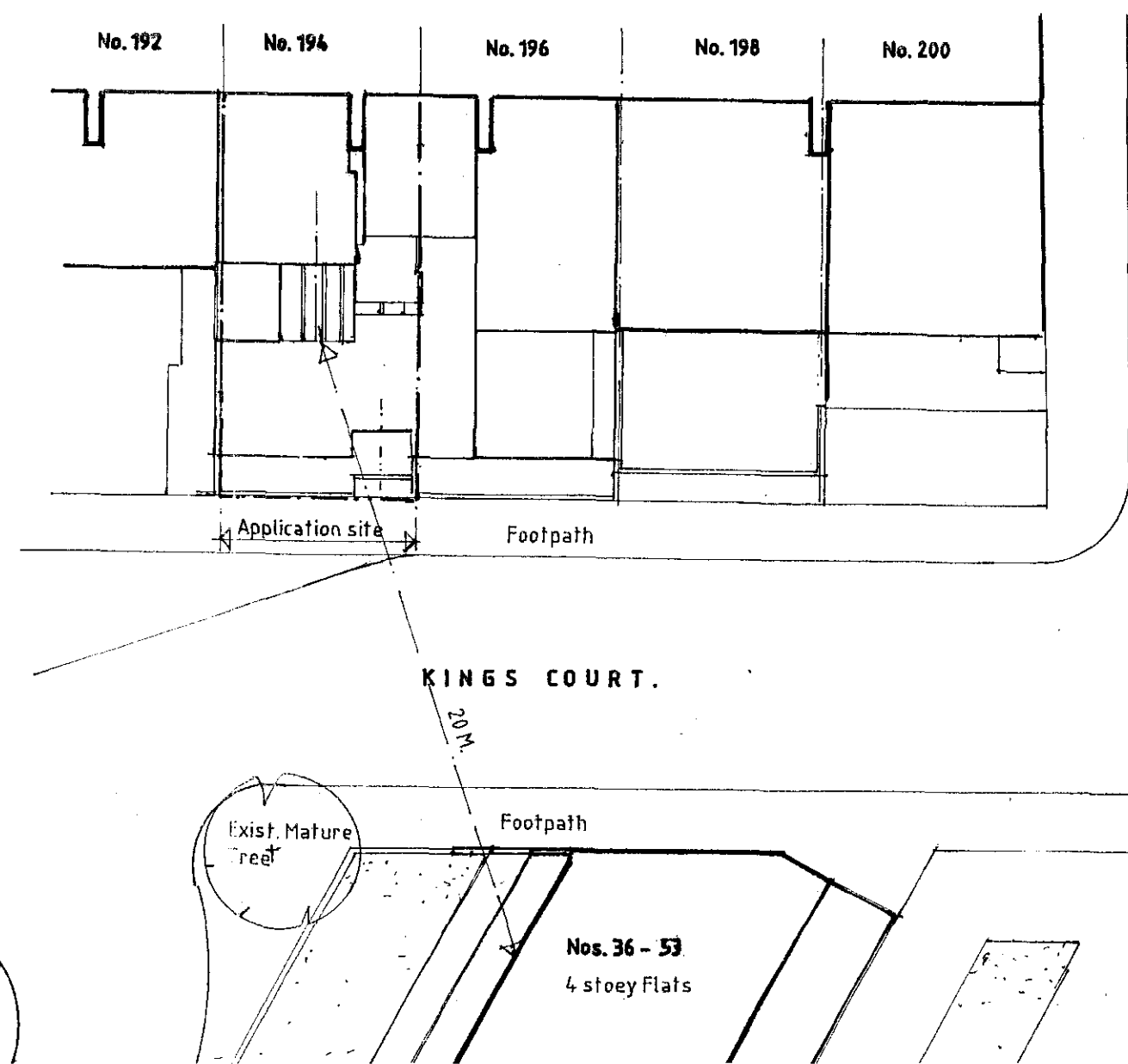


SECTION A-A

SECTION B-B



EAST ELEVATION TO KINGS COURT



BLOCK PLAN, 1/200 scale

General Notes

NOTES

For External Finishes - see Drg. No. DP/1245/1

No.	Revision/Issue	Date
A	Cycle store relocated & associated amendments	OCT 2009

Direct Planning Limited

Town Planning Consultants and Architects, Established, 1988

Riverbank House 95/97 High Street Tel: 01689 875999
 St. Mary Cray Orpington, Kent Fax: 01689 875599
 BR5 3NH Email: enquiries@directplanning.co.uk

Client **Mr. Malik Sadik**

Project
PROPOSED NEW RESIDENTIAL ACCOM
194, KILBURN HIGH ROAD

Drwg. Title
SECTION A-A & B-B
ELEVATION TO KINGS COURT

Scale **1/100 & 1/200** Date **DECEMBER 2009**

Project/Drwg. No. **DP/1245/14 A**