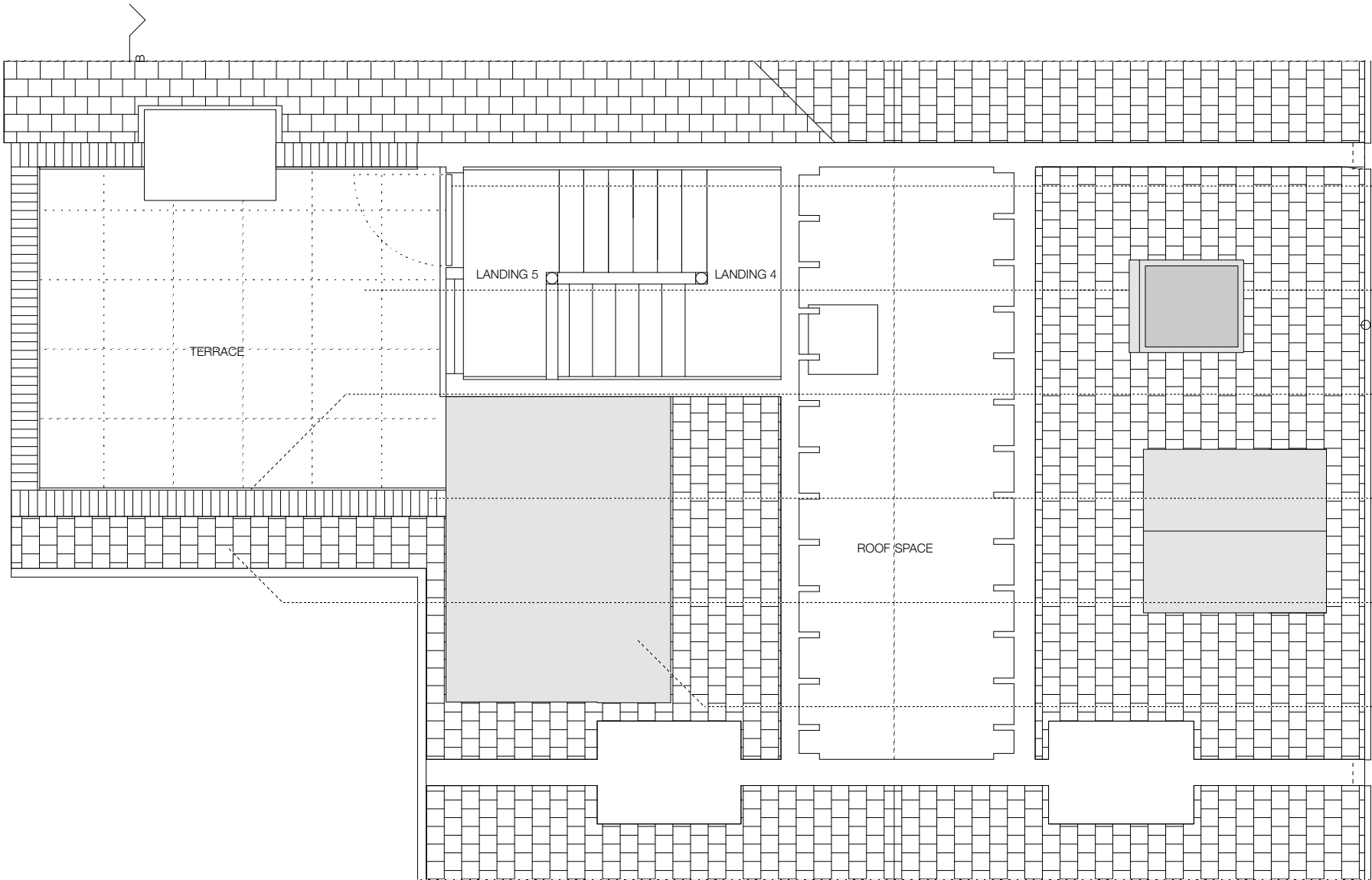


A

A

B

B



Glazed door and screen  
to match existing UPVC

Stone tiles

Toughend sandblasted glass  
screen to prevent overlooking

Second hand stock  
brick parapet

Original roof

Dormer moved and clad  
in zinc



REVISIONS A 15 Feb 10 Altered drawing name and added dormer and Velux window

1131.35

PETER BELL & PARTNERS ARCHITECTS 44 DALE STREET LONDON W4 2BL

42 COTLEIGH ROAD LONDON NW6 2NP

THIRD FLOOR PLAN AS PROPOSED

t 020 8994 3023 m 07967 971 639 scale 1:25 @ A1 & 1:50 @ A3 4 January 2010