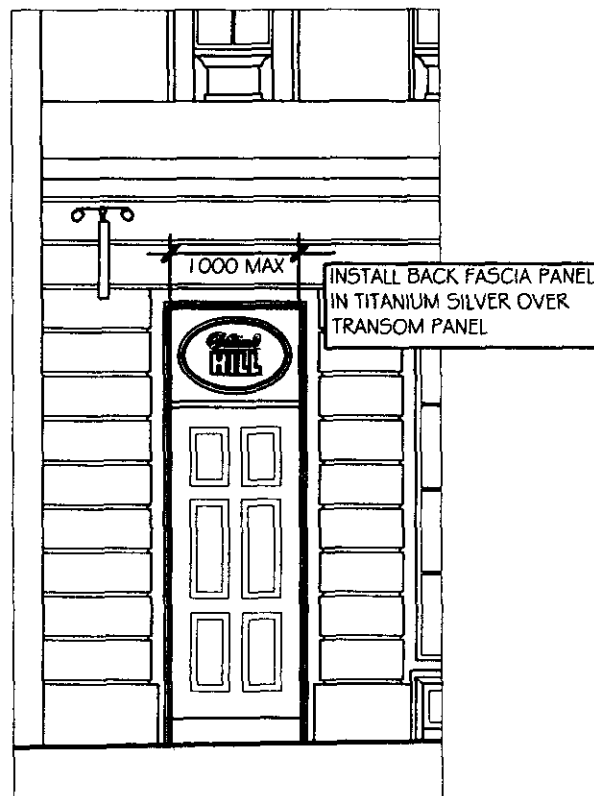
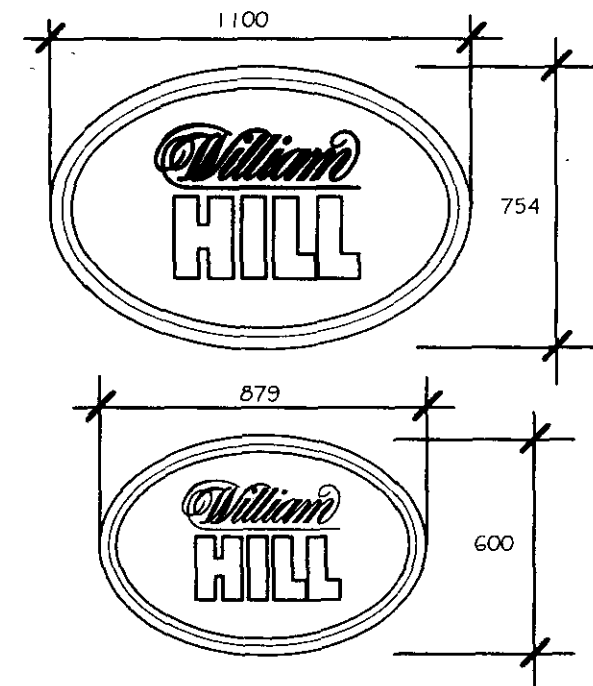


EXTERNALLY ILLUMINATED
TRANSOME OVAL SIGN 1:20

THIS DRAWING TO BE READ IN CONJUNCTION
WITH Sd/06/6.5D



NON-ILLUMINATED
TRANSOME OVAL SIGN 1:20



OVAL SIGN DETAILS
1:20

INTERNALLY ILLUMINATED OVAL SIGNS
TO BE INSTALLED WHERE DESIGNATED
ONTO SHORT LENGTHS OF FASCIA IN
CONJUNCTION WITH LOZENGE SIGNS
(TO BE CONFIRMED BY THE PROJECT MANAGER)

STANDARD DETAIL - Sd/06/6.1A (3)

EXAMPLES OF SHOPFRONT ELEVATIONS
WITH OVAL SIGNAGE

DATE: OCTOBER 2006

SCALE: 1:50

DRAWN BY: Andrew Wetherhill

William HILL
ORGANIZATION Ltd.