



Fixed frameless tinted glass panel

---

Fixed metal fascia sign

---

Frameless tinted glass doors with metal handle

---

Fixed metal projecting fascia sign

---

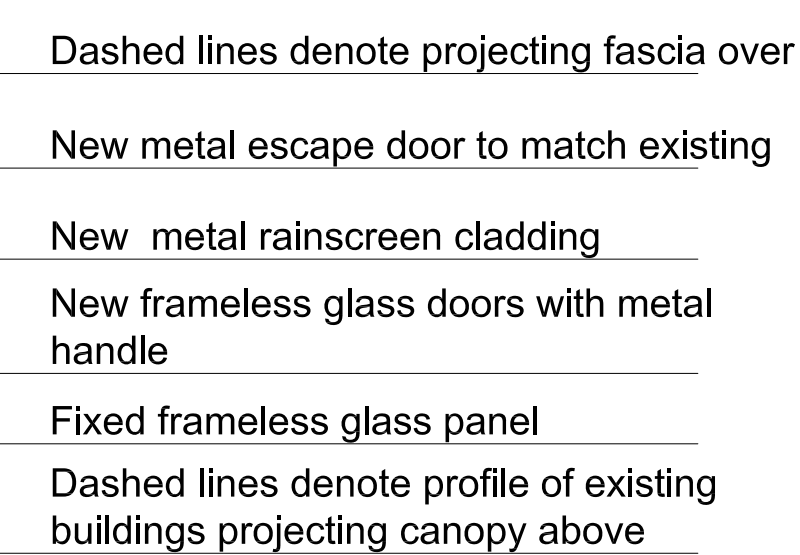
Existing terracotta panel retained

---


New metal rainscreen cladding

---

New metal escape door to match rainscreen cladding



North



project **Shaftesbury House, 151 Shaftesbury Avenue, London**

Detailed Elevation - Proposed - South Elevation Retail Unit Entrance

scale 1:20 @ A0 date 07.10.09 author LP job no. 0591 DWG no. D0-070 rev.

© Orbit Architects, 83 Blackfriars Road, London SE1 8HA, t. 020 7593 3380 f. 020 7593 3381 e. info@orbitarchitects