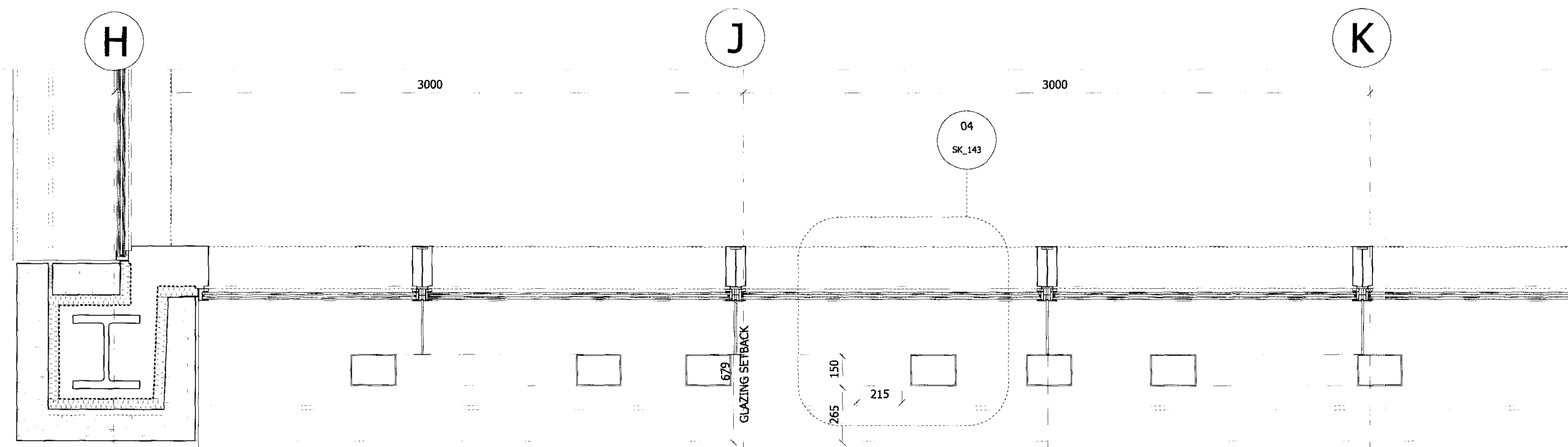


01 ELEVATION
CAD File Name



02 PLAN
CAD File Name

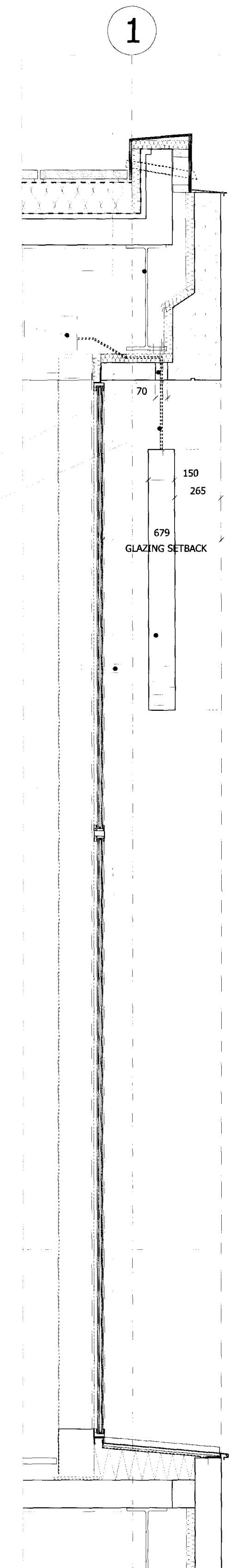
SUPPORT FOR SIGN
FROM STEEL BEAM ABOVE

ROUTE FOR FIBRE
OPTIC INTO LETTER
WITH LIGHT ENGINE
WITHIN CEILING VOID

70 mm DIAMETER
HOLE THROUGH PRECAST
FOR SUSPENSION
SUSPENSION TUBE
FOR LETTERING

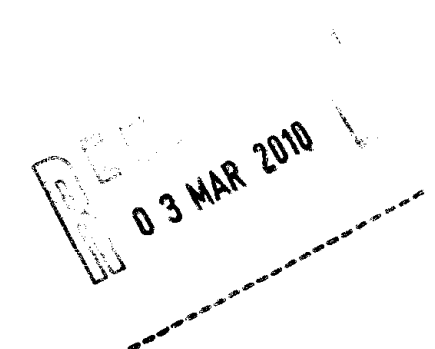
SIGNAGE LETTER

FIXING BACK TO CURTAIN
WALLING MULLION FOR
LATERAL RESTRAINT



03 SECTION
CAD File Name

NOTES
DO NOT SCALE FROM THIS DRAWING.
DIMENSIONS TO BE CHECKED ON SITE.
ALL OMISSIONS AND DISCREPANCIES TO BE
REPORTED TO THE ARCHITECT IMMEDIATELY.
DRAWINGS BASED ON SURVEY INFORMATION
BY MICHAEL GALLIE AND PARTNERS.



Issued For Planning 24/02/10 MPO A
Date Check Rev

Squire and Partners

77 Wicklow Street London WC1X 9JY
T: 020 7278 5555 F: 020 7239 0495

info@squireandpartners.com
www.squireandpartners.com

Project
UNISON HQ
Euston Road, North Site
London NW1

Drawing
EUSTON ROAD SIGNAGE
PLAN / SECTION / ELEVATION

Drawn	Date	Scale
MPO	24/02/2010	1:20@A1 1:40@A3
Job number	Drawing number	Revision
05070	15-02_610	A

Original Drawing Size A1