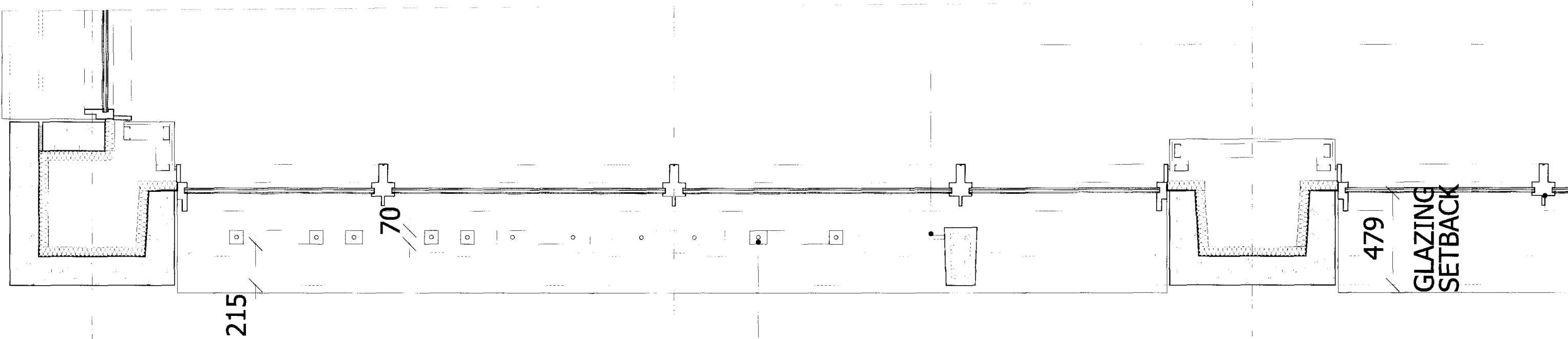


01 ELEVATION
07030_SK_Elev_Churchway_Signage_01.dgn



03 PLAN
05070_ExEv_Plan_4th_01.dgn

LETTERS SUSPENDED FROM 20MM DIA
ROD FIXED BACK TO STEEL BEAM WITH
PROPRIETARY BRACKET

BRUSHED STAINLESS STEEL BACKED LETTERS
WITH ACRYLIC DIFFUSER TO FRONT. ILLUM-
INATED WITH FIRBE OPTIC LIGHTING

20MM DIA ROD CONNECTING LETTERS

20MM DIA ROD FIXED TO PRECAST CLADDING
AND PRECAST FIN FOR LATERAL RESTRAINT

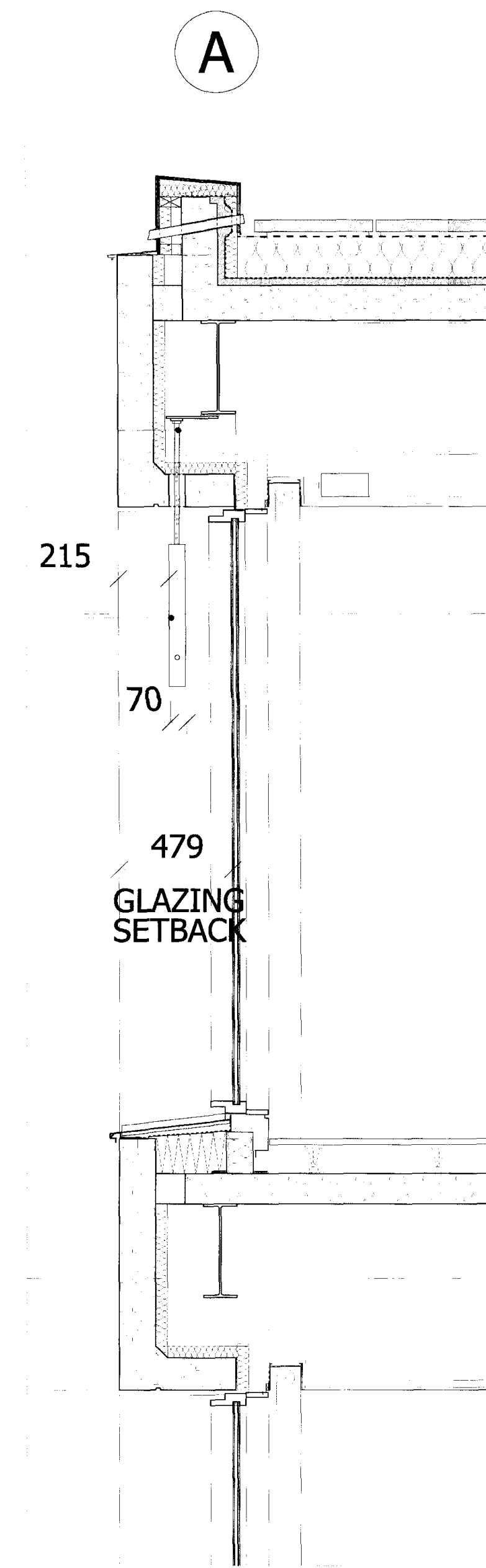
PRECAST CONCRETE FIN

'UNISON' SWIRL APPLIED TO WINDOW WITH
TINTED FILM

20MM DIA ROD FIXED TO PRECAST FIN FOR
LATERAL RESTRAINT

TYPICAL CURTAIN WALLING PROFILE WITH
479MM GLAZING SETBACK

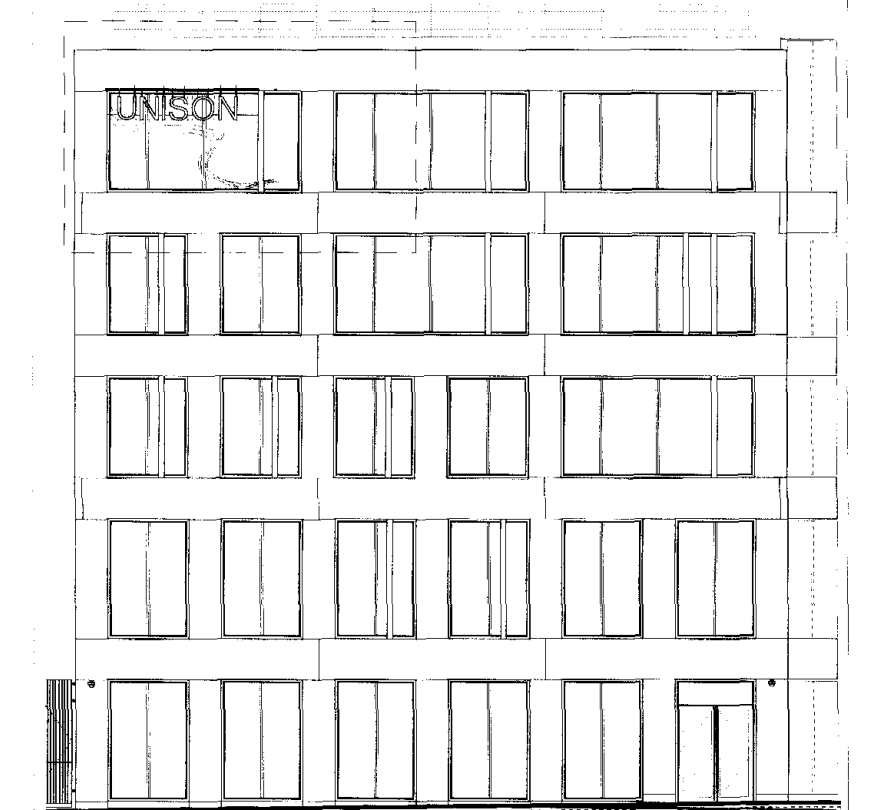
BRUSHED STAINLESS STEEL BACKED LETTERS
WITH ACRYLIC DIFFUSER TO FRONT. ILLUM-
INATED WITH FIRBE OPTIC LIGHTING



02 SECTION
07030_SK_Elev_Churchway_Signage_01.dgn

NOTES
DO NOT SCALE FROM THIS DRAWING.
DIMENSIONS TO BE CHECKED ON SITE.
ALL OMISSIONS AND DISCREPANCIES TO BE
REPORTED TO THE ARCHITECT IMMEDIATELY.
DRAWINGS BASED ON SURVEY INFORMATION
BY MICHAEL GALLIE AND PARTNERS.

KEY



ISSUED FOR PLANNING
24/02/10 MPO A
Date Check Rev

Squire and Partners

77 Wicklow Street London WC1X 9JY
T: 020 7278 5555 F: 020 7239 0495

info@squireandpartners.com
www.squireandpartners.com

Project
UNISON HQ
Euston Road, North Site
London NW1
Drawing
CHURCHWAY SIGNAGE
PLAN / SECTION / ELEVATION

| | | |
|---------------------|-----------------------------|-----------------------------|
| Drawn MPO | Date 24/02/2010 | Scale 1:20@A1 1:40@A3 |
| Job number 05070 | Drawing number 15-02_611 | Revision A |

Original Drawing Size A1