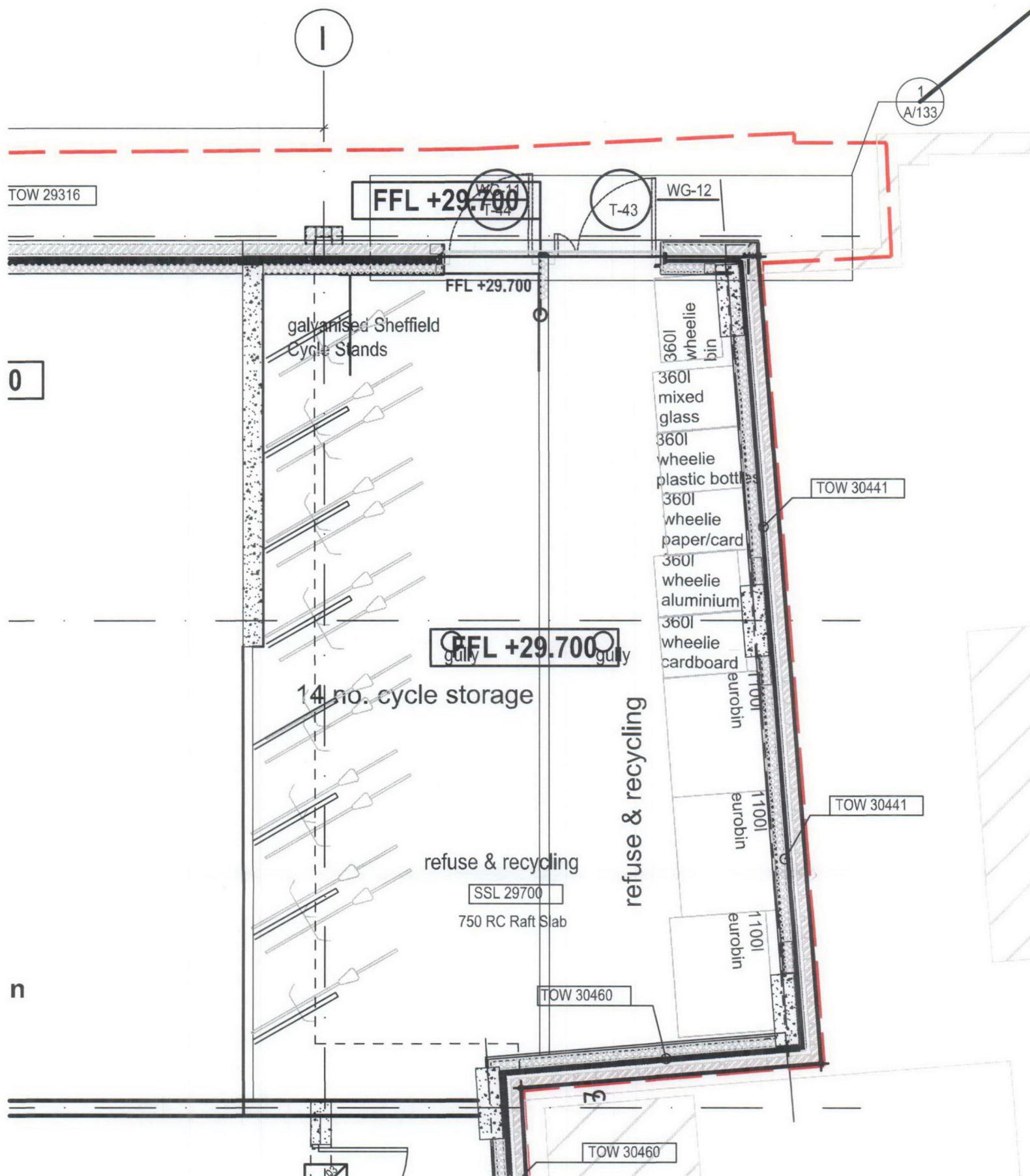
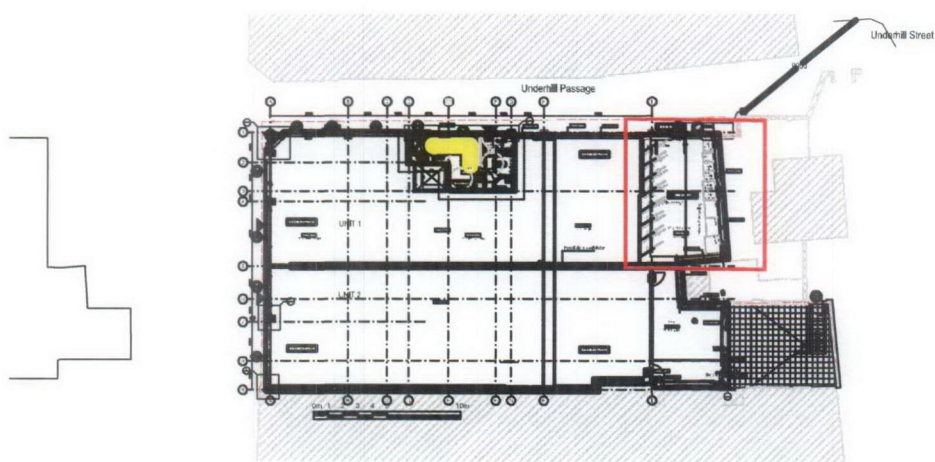


159,161,163 & 165 CAMDEN HIGH STREET, Ref. 2006/0776/P

Attachment for Condition 4



1 Ground Floor Plan
Scale 1:500



2 Ground Floor Plan - Overview
Scale 1:500

GENERALLY:
DRAWING TO BE READ IN CONJUNCTION WITH ALL
RELEVANT FLOOR PLANS & STRUCTURAL,
MECHANICAL & ELECTRICAL
ENGINEERS DETAILS.

ALL DIMENSIONS TO BE CHECKED ON SITE BEFORE
COMMENCEMENT OF WORKS. ALL DIMENSIONS
SHOWN ARE TO STRUCTURE UNLESS OTHERWISE
NOTED. DO NOT SCALE THIS DRAWING. WORK TO
FIGURED DIMENSIONS ONLY.

ALL CONSTRUCTION TO BE IN COMPLIANCE WITH
LOCAL AUTHORITY BUILDING REGULATIONS &
STANDARDS AND THE HEALTH
AND SAFETY PLAN. ADVISE THE PLANNING
SUPERVISOR OF
ALL RELEVANT HEALTH & SAFETY MATTERS.
ONLY BUILD FROM DRAWINGS MARKED FOR
CONSTRUCTION.

©THE COPYRIGHT OF THIS DRAWING BELONGS TO
NEALE & NORDEN LTD. DO NOT REPRODUCE OR
USE THIS DRAWING WITHOUT THE PRIOR
PERMISSION OF NEALE & NORDEN LTD.

34 OSNABURGH STREET LONDON NW1 3ND TEL: 020 7874 1500 FAX: 020 7874 1501		
LIMITED		
159-165 CAMDEN HIGH STREET		
S PATEL		
Refuse & Cycle Storage		
date 26.08.08	scale 1:20	drawn DT
job no 048604	drawing no PC05	revision B