

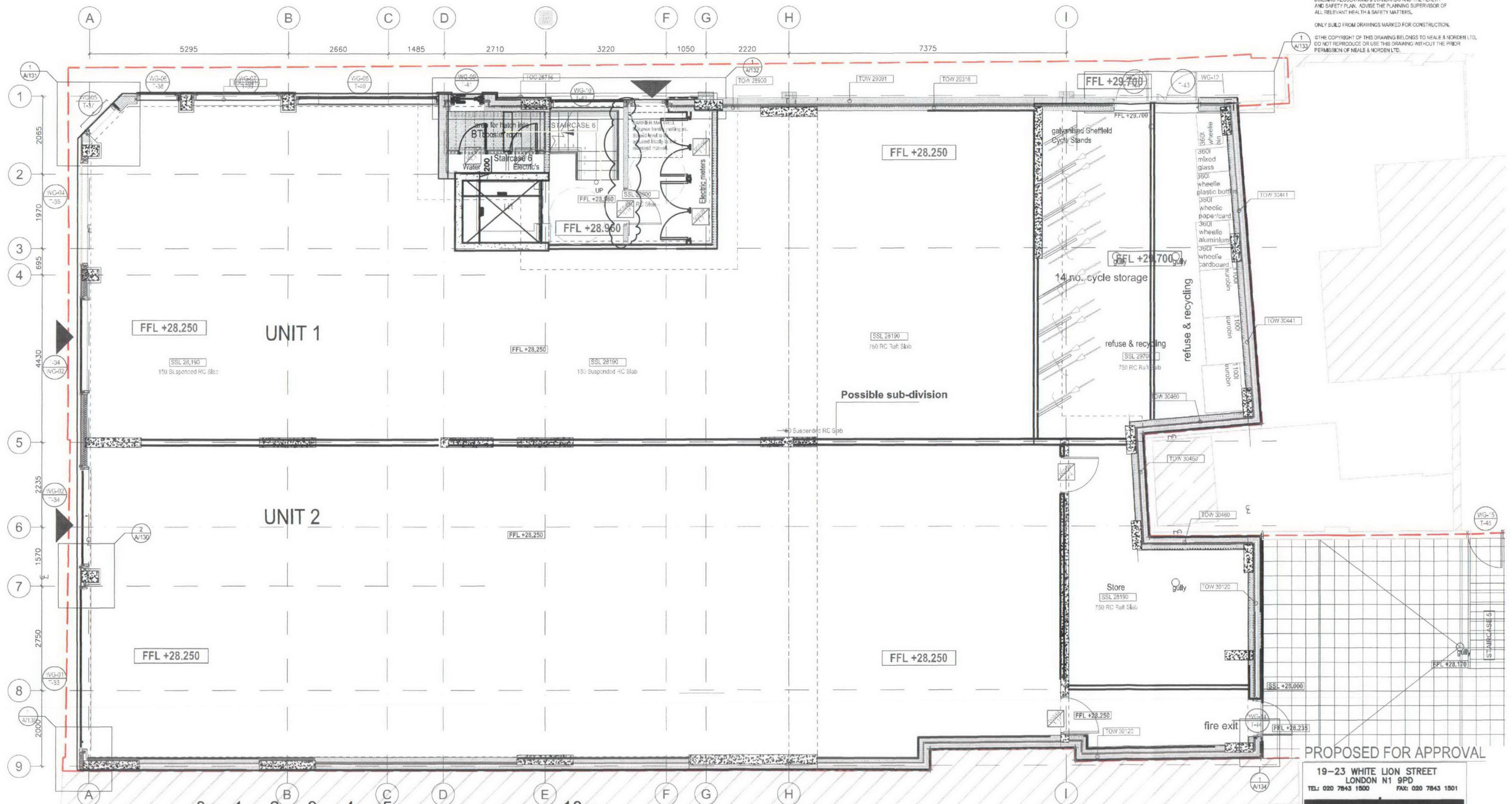
A STRUCTURAL, MECHANICAL & ELECTRICAL ENGINEERS DETAILS.

ALL DIMENSIONS TO BE CHECKED ON SITE BEFORE COMMENCEMENT OF WORKS. ALL DIMENSIONS SHOWN ARE TO STRUCTURE UNLESS OTHERWISE NOTED. DO NOT SCALE THIS DRAWING. WORK TO FIGURED DIMENSIONS ONLY.

ALL CONSTRUCTION TO BE IN COMPLIANCE WITH LOCAL AUTHORITY BUILDING REGULATIONS AND STANDARDS AND THE HEALTH AND SAFETY PLAN. ADVISE THE PLANNING SUPERVISOR OF ALL RELEVANT HEALTH & SAFETY MATTERS.

ONLY BUILD FROM DRAWINGS MARKED FOR CONSTRUCTION.

THE COPYRIGHT OF THIS DRAWING BELONGS TO NEALE & NORDEN LTD. DO NOT REPRODUCE OR USE THIS DRAWING WITHOUT THE PRIOR PERMISSION OF NEALE & NORDEN LTD.



REVISIONS

Rev: A (20.12.07) - Staircases 3, 4 have been moved; Service riser has been amended; External wall by grid A4 has been changed to 300mm concrete block; Additional column on grid 'F8' has been removed; New vents have been added; Staircase 2 has been added to provide space for internal linking on the floor below; Internal wall between Unit A and B has been amended; General notes added.

Rev: B (12.06.08) - Stairs to store added, electric meter cupboard added, and service riser area revised; Concrete columns amended to match structural engineers drawings; Drawing for LUL submission.

Rev: C (16.07.08) - External wall built up added; Column along grid line 1 / D/E omitted; Front glazing amended to Curtainwall system with glazed opaque infills; Drawing scale changed to 1:50 @ A1. SVP positions to be viewed and revised by M&E.

Rev: D (17.07.08) - Downstand beam between grid lines E/F amended to S.E drawing.

Rev: E (24.06.09) - updated to new SE design, basement taken out.

Rev: F (12.08.09) - updated to new SE design, rear terraced area amended.

PROPOSED FOR APPROVAL

19-23 WHITE LION STREET
LONDON N1 9PD
TEL: 020 7843 1500 FAX: 020 7843 1501

LIMITED

Job
159-165 CAMDEN HIGH STREET

client
S PATEL

title
GROUND FLOOR PLAN

date 11/07	scale 1:50 @A1	drawn SS
job no 048604	drawing no L 11	revision F