

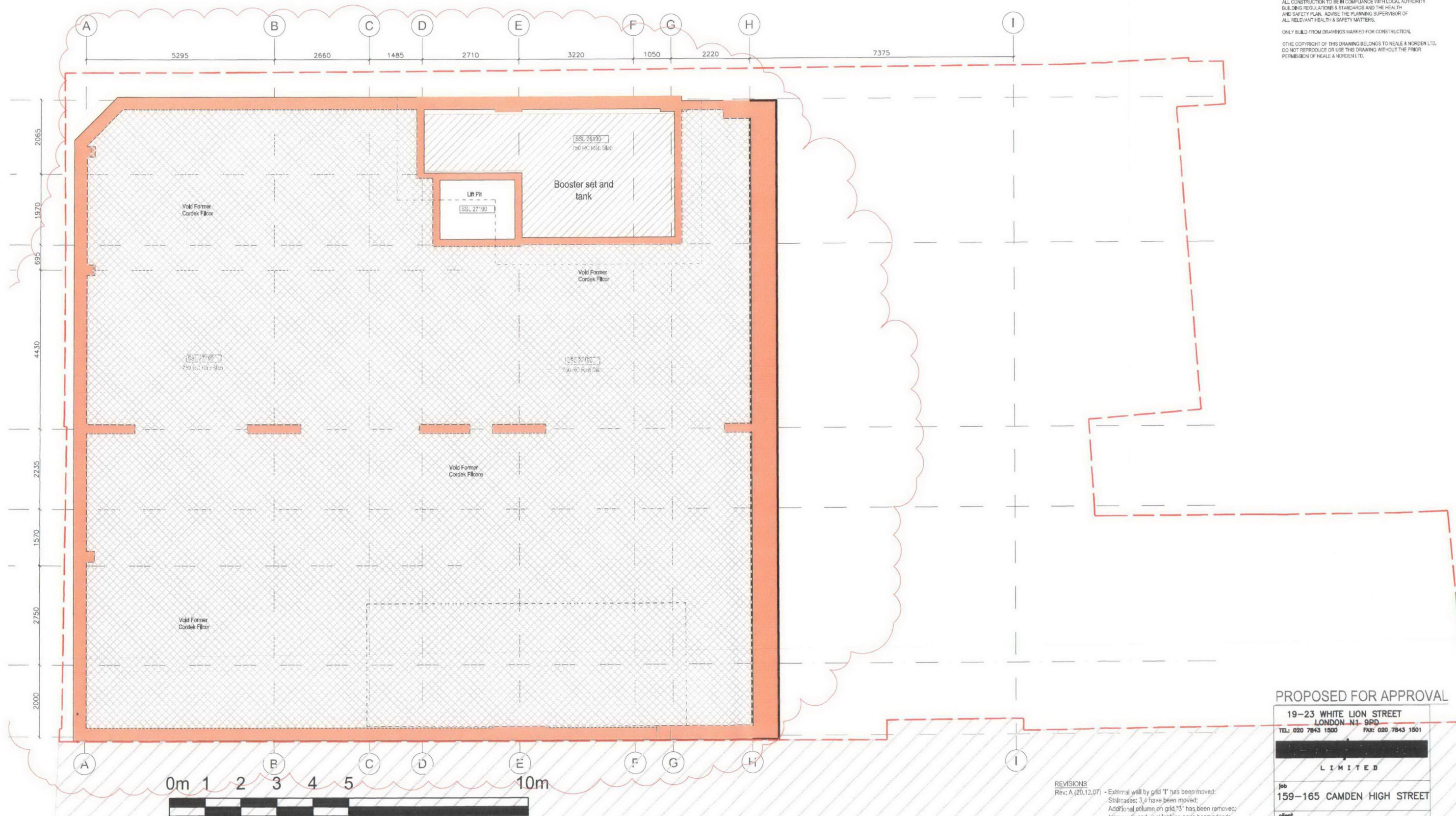
GENERALLY:
DRAWING TO BE READ IN CONJUNCTION WITH ALL RELEVANT FLOOR PLANS
& STRUCTURAL, MECHANICAL & ELECTRICAL
ENGINEERS DETAILS.

ALL DIMENSIONS TO BE CHECKED ON SITE BEFORE COMMENCEMENT OF
WORKS. ALL DIMENSIONS SHOWN ARE TO STRUCTURE UNLESS OTHERWISE
NOTED. DO NOT SCALE THIS DRAWING. WORK TO FIGURED DIMENSIONS
ONLY.

ALL CONSTRUCTION TO BE IN COMPLIANCE WITH LOCAL AUTHORITY
BUILDING REGULATIONS & STANDARDS AND THE HEALTH
AND SAFETY PLAN. ADVISE THE PLANNING SUPERVISOR OF
ALL RELEVANT HEALTH & SAFETY MATTERS.

ONLY BUILD FROM DRAWINGS MARKED FOR CONSTRUCTION.

THE COPYRIGHT OF THIS DRAWING BELONGS TO NEALE & NORDEN LTD.
DO NOT REPRODUCE OR USE THIS DRAWING WITHOUT THE PRIOR
PERMISSION OF NEALE & NORDEN LTD.



PROPOSED FOR APPROVAL

19-23 WHITE LION STREET
LONDON N1 9PD

TEL: 020 7843 1500 FAX: 020 7843 1501

LIMITED

Job
159-165 CAMDEN HIGH STREET

client
S PATEL

title
LOWER GROUND FLOOR

date
11/07

scale
1:50 @ A1

drawn
SS

job no
048604

drawing no
L 10

revision
F

REVISIONS

- Rev: A (20.12.07) - External wall by grid 'I' has been moved;
Staircases 3, 4 have been moved;
Additional column on grid 'I3' has been removed;
New voids and void lobbies have been added;
Staircases 1, 2 have been amended to provide space
for internal lining;
Internal wall between Unit A and B has been amended;
General notes added
- Rev: B (12.06.08) - Doors added to lobby and water intake room;
Concrete columns amended to match structural
engineers drawings. Drawing for LUL submission
- Rev: C (16.07.08) - Drawing scale changed to 1:50 @ A1. SVP positions to be viewed
and revised by M&E.
- Rev: D (09.09.08) - FFL Level changed to 24.880 to match sections
- Rev: E (16.06.09) - S.E concrete added
- Rev: F (03.08.09) - for planner approval