

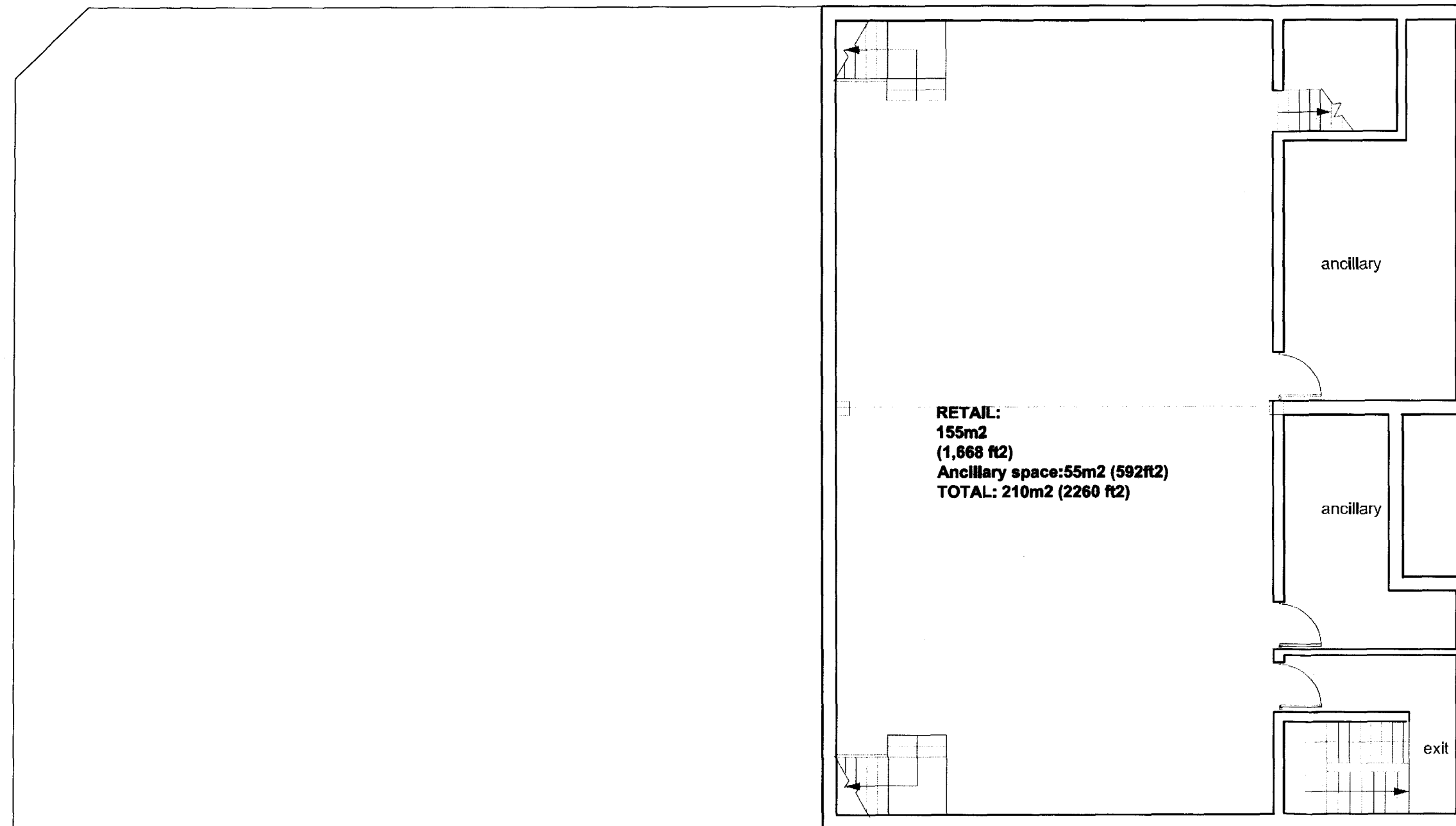
THIS DRAWING HAS BEEN PRODUCED SOLELY FOR THE CLIENT AND PROJECT LISTED BELOW AND IS SUBMITTED AS PART OF A PLANNING APPLICATION AND IS NOT INTENDED FOR USE BY ANY OTHER PERSON OR FOR ANY OTHER PURPOSE.

OTHERS MUST SATISFY THEMSELVES WITH RESPECT TO THE ACCURACY OR SUITABILITY OF THE DRAWINGS OR FOR ANY OTHER REASON.

© THIS DESIGN IS THE COPYRIGHT OF NEALE & NORDEN LTD. THE DRAWING MAY NOT BE REPRODUCED IN PART OR IN WHOLE WITHOUT PRIOR PERMISSION.

ISSUES RELATING TO FOUNDATIONS, STRUCTURES, PARTY WALLS & RIGHTS OF LIGHT TO BE FULLY EVALUATED BY SPECIALIST CONSULTANTS.

THE LOCATION AND SIZE OF EXISTING FEATURES ARE INDICATIVE ONLY. SURVEY DRAWINGS MUST BE RELIED UPON FOR DIMENSIONS.



159 - 165 CAMDEN HIGH STREET

Approved

PROPOSED LOWER GROUND FLOOR PLAN

SEPT 2005

1:100

P09A

S. PATEL

Limited