

TREE REPORT AND SURVEY
BS5837 2005

Refer to site plan drawing no 3245/05A.

There are three trees on the site and adjacent to it.

- 1 In the garden to the west side an ash tree Ref TPO S4 – photo 1 & 2.
- 2 In the garden/yard to the north, a fig tree – photo 3 & 4.
- 3 In the pavement to the north on plane tree – photo 5

- | | | |
|---|-------------------|---|
| 1 | Ash TPO S4 | Height: 8m
Stem diam: N 300mm
Spread: N3.75m/E3.2/S4.75/W5.5
Clearance: 1.5m |
|---|-------------------|---|

Hollow on the N side. Poor structural condition
Cat C

Roof spread below garden wall to Berkley Road confined by level change of \pm 500mm to pavement on N side.

Reshaped by 30% reduction and dead branch removal consented on 24th May 2007 Ref 2007/2476/T

- | | | |
|---|-----------------|---|
| 2 | Fig Tree | Height: 3m
Stem diam: Multi stems \pm 50mm
Spread: 3m
Clearance: on the ground |
|---|-----------------|---|

This tree has multi stems and has been cut down frequently. Last pruned by Consent dated 08 December 2007 when it was reduced by 15% Ref: P9603316.

The tree is approx 1.5m below pavement level in Berkley Road against the garden retaining wall.

- | | | |
|---|-------------------|--|
| 3 | Plane Tree | Height: 8m
Stem diam: 450mm
Spread: N3m/E3/S3/W3 |
|---|-------------------|--|

This is a Council tree in the pavement of Berkley Road. It is pollarded.

4 Arboricultural Implications Assessment

4.1 Construction, Repairs and Alterations of existing buildings.

- a) These trees will not be affected by the proposed alterations to the building which is outside the RPA of all of them.
- b) New foundation may be required for the rear extension walls. This has not been determined at the date of Planning Application. Future growth might be restrictive if these brick foundations are replaced by deep RC strip foundations.
- c) The alignment of drains will not be altered.
- d) Water harvesting equipment will be sited in the yard on the north side of the house.

4.2 Site works during construction

- a) Site storage and working areas will be set up as the attached plan 3245/EX01.2.
- b) Storage of materials will be for a period of 6 months commencing in September/October 2009.
- c) Materials and plant will be stored on platforms of 25mm Sterling Board raised on brick pads 100mm off the ground surface and clear of tree roots and stems.

End



33 CHALCOT SQUARE, NW1

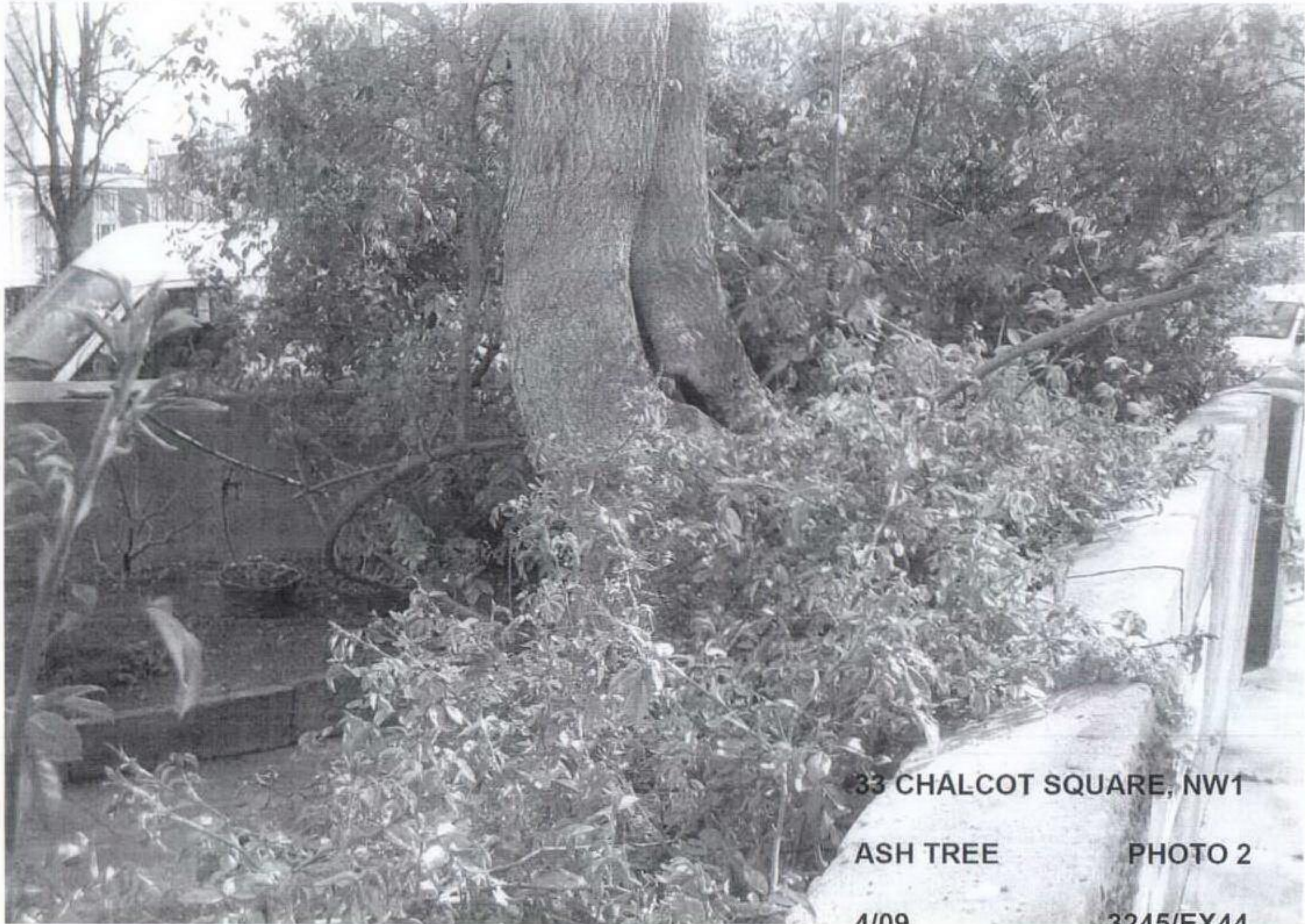
BERKLEY
ROAD NW1

ASH TREE

PHOTO 1

4/09

3245/EX43



33 CHALCOT SQUARE, NW1

ASH TREE

PHOTO 2

1/09

22/5/EY/11



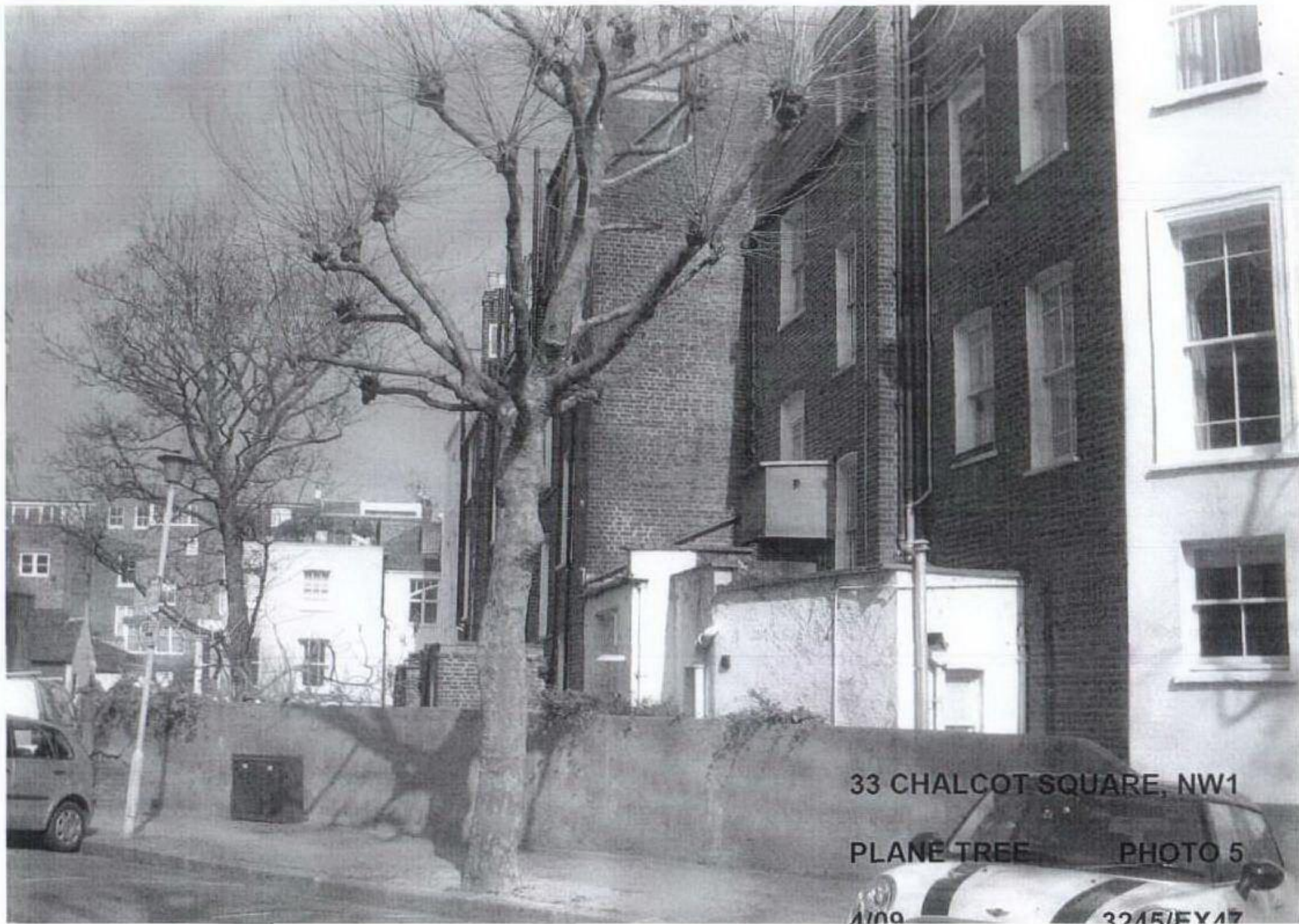
33 CHALCOT SQUARE, NW1

FIG TREE

PHOTO 3

4/09

2245/EY45



33 CHALCOT SQUARE, NW1

PLANE TREE PHOTO 5

A100

3245/EY17