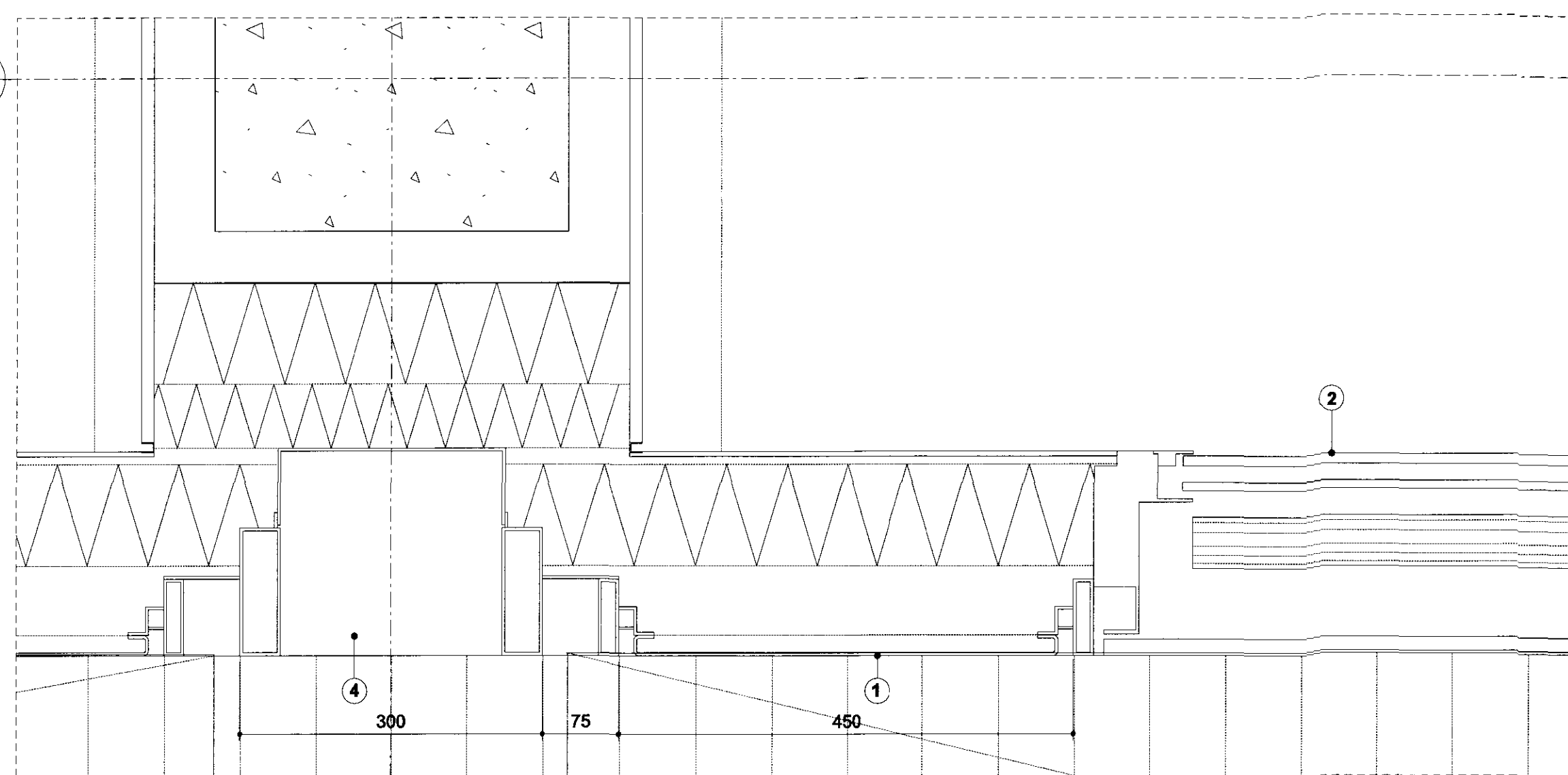


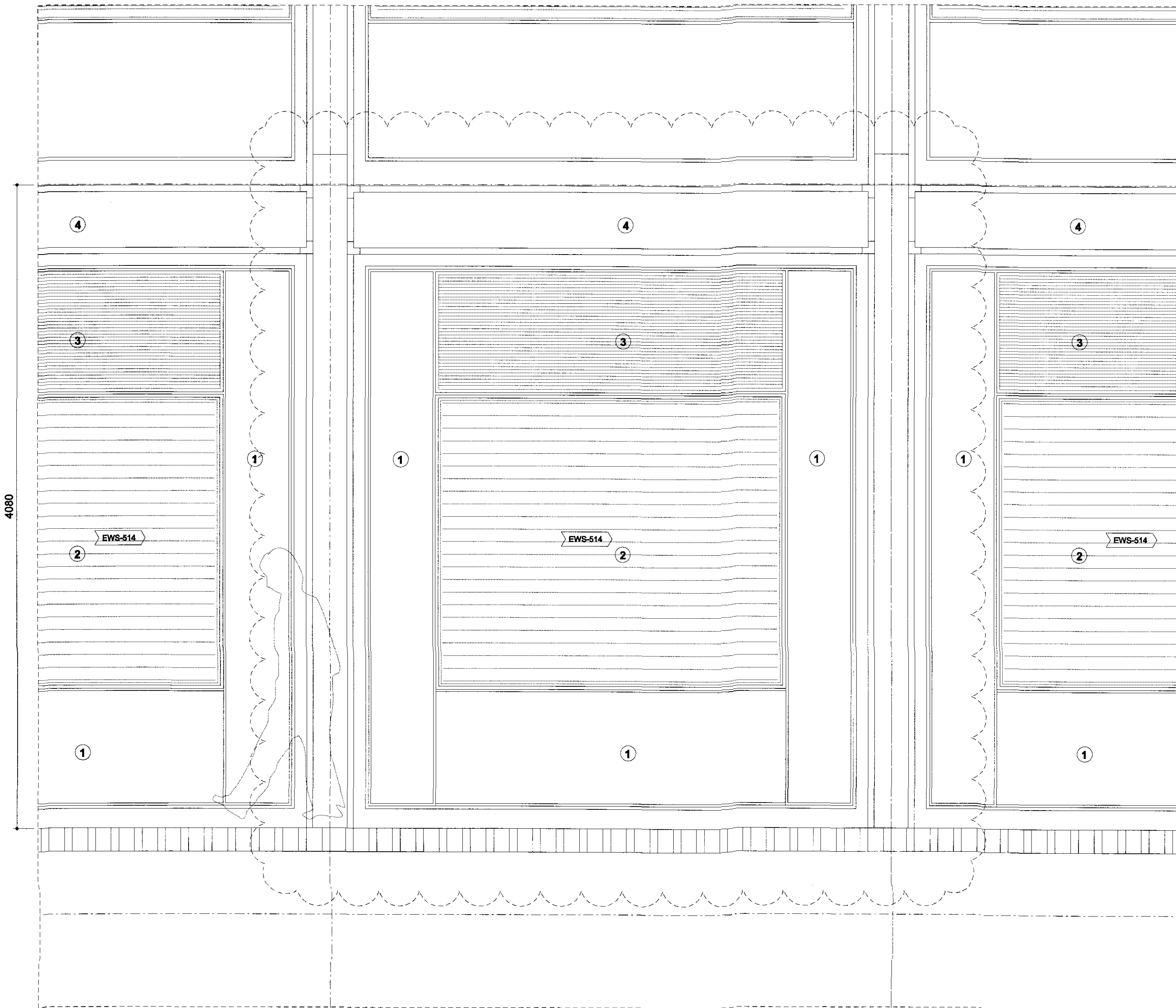
1. Partial Section

G.L.  
1



Detail 01. Scale 1:5

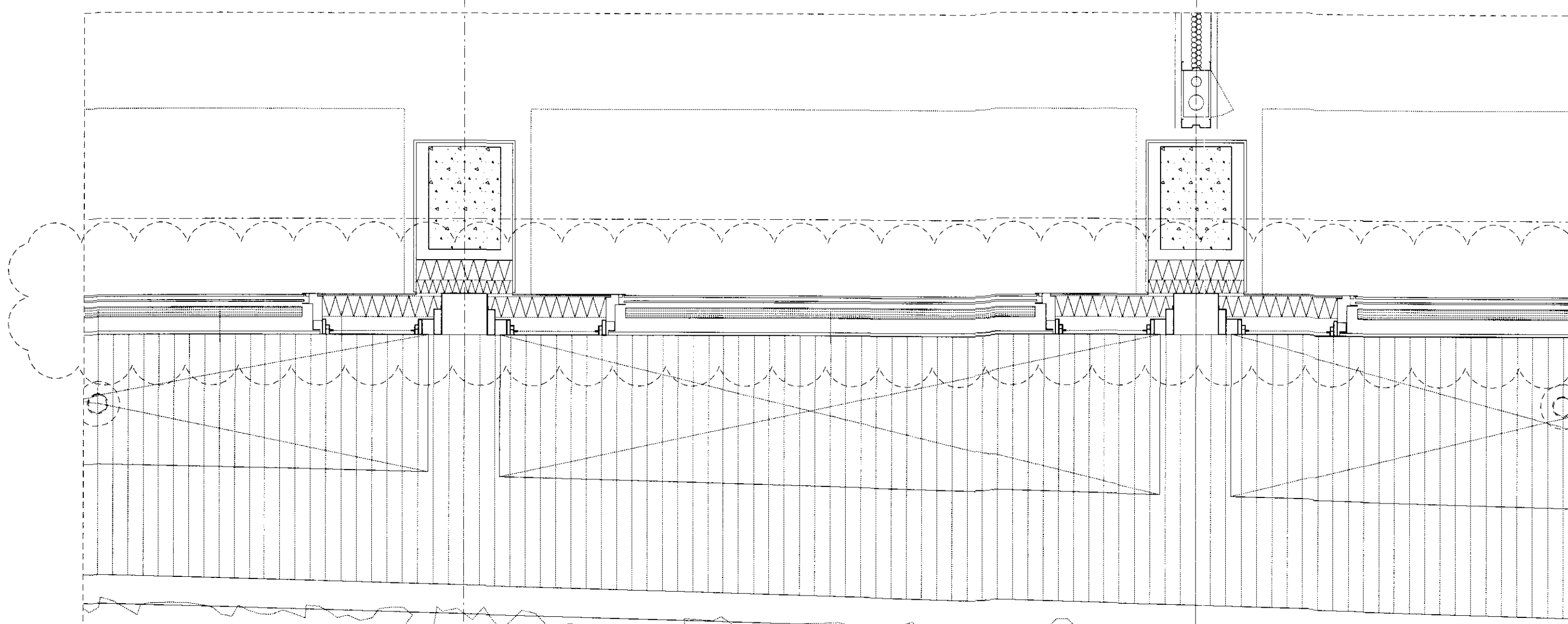
G.L.  
F



2. Partial Elevation

G.L.  
F

G.L.  
E



3. Partial Plan

G.L.  
F

G.L.  
E

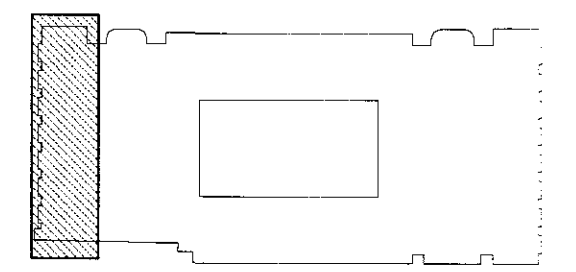
General Notes:

- G1 For Site and Grid setting out refer to AUCLHAA/3000
- G2 All dimensions to be checked on site
- G3 Any discrepancies between drawings to be reported to the Architect immediately.
- G4 All Levels are above ordnance datum (AOD)  
New Levels are shown thus: +20.345  
Existing Levels are shown thus: EX(+20.345)  
Retained Existing Levels: EX(-20.345)
- G5 Use figured dimensions only; Do not scale from drawings. F IN DOUBT, ASK.
- G6 Refer to Structural Engineers drawings for all structural and services information.
- G7 For tolerances see the Design Drawings and Specifications
- G8 For elements of work subject to Contractor's Design, this drawing is indicative of the visual & performance requirements only. The Contractor is responsible for the detailed design and co-ordination of the installation within the parameters defined in the specification, design drawings, contract terms and contract documents.
- G9 Room numbers are shown thus: 115
- G10 Door(D) & Window (W) References are shown thus: 115
- G11 Clear height is shown thus (finished floor to finished soffit) 2750
- G12 T Sheet Reference shown thus: MS-01
- G13 Finishes are shown thus: 115
- G14 Setting Out Points shown thus: SOP
- G15 Refer to AUCLHAA/9100 for T Sheet references, and to AUCLHAA/9110 to 9167 for Architectural Specifications.

Notes

KEY TO MATERIALS

- 1 Bronze panel
- 2 glazed units EWS-514
- 3 louvres - smoke exhaust vent EWS-114A
- 4 Bronze channel formed with bronze extrusion and panel



**EWS-514**  
**EWS-514A**

Work Package	Cost Check	Info/Briefing	Tender	Contract	Construction	Date	Ref.	Revision
						11.06.09	A	Memo 0700: UCLH Phase 3 Redevelopment for Cancer Service: Issued for PS2 Facade.
						05.03.10	B	T1 External Envelope Package under Memo 1394
						08.03.10	C	Issued for Discharge of Planning Conditions under Memo 1405.

Date	Ref.	Revision

Date	Ref.	Revision

Project	UCLH4A - Phase 3 Cancer Centre
Subject	EWS-514 Precast concrete panel University Street Lower Ground Floor
Architects	Hopkins Architects Ltd 27 Broadley Terrace, London, NW1 6LG T: 020 7724 1751 E: mail@hopkins.co.uk

Sort Code	Drawing Number	Rev.
A / UCLH4A	<b>5060</b>	<b>C</b>
Date	29.07.09	Scale 1:20 at A1