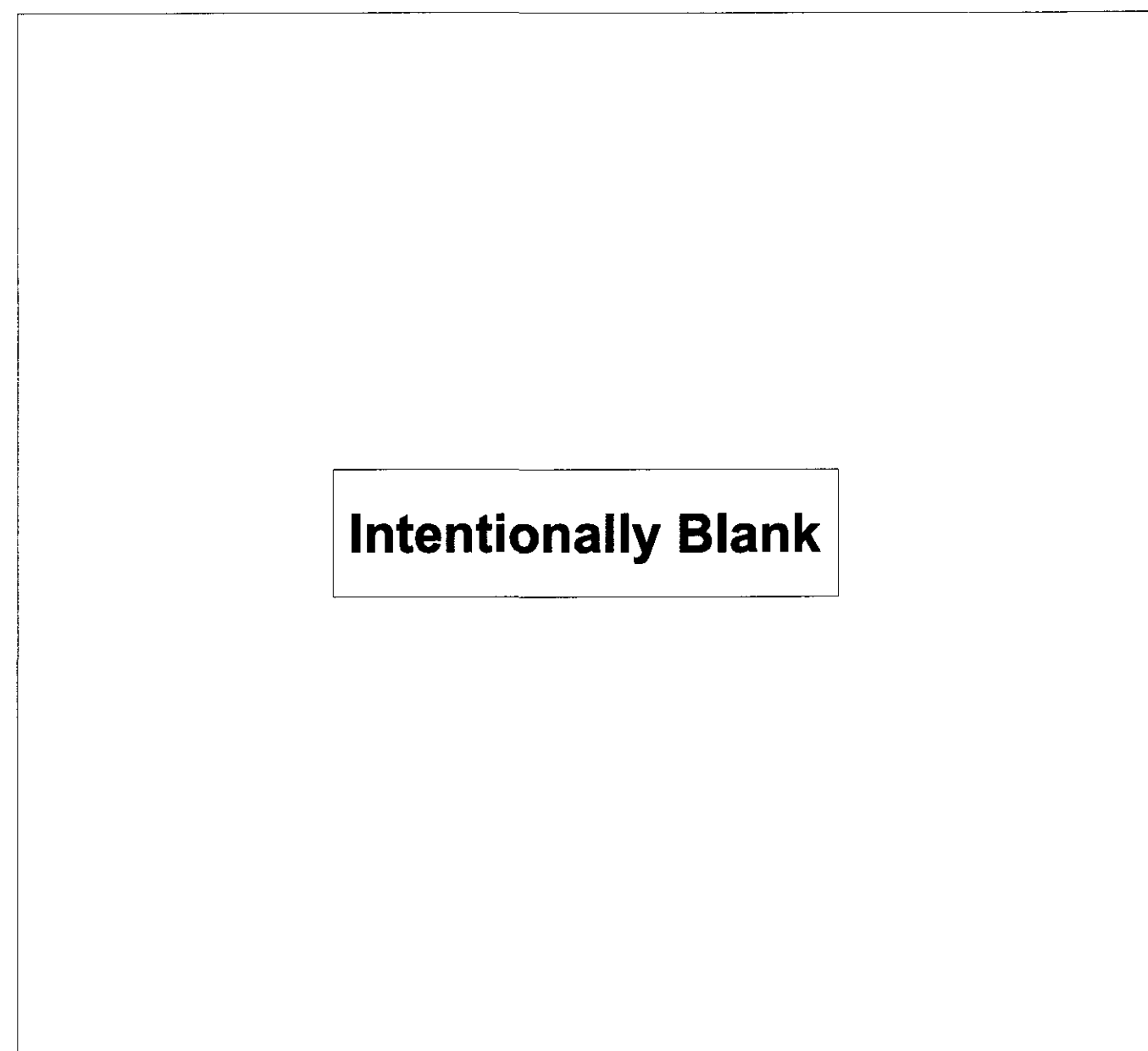
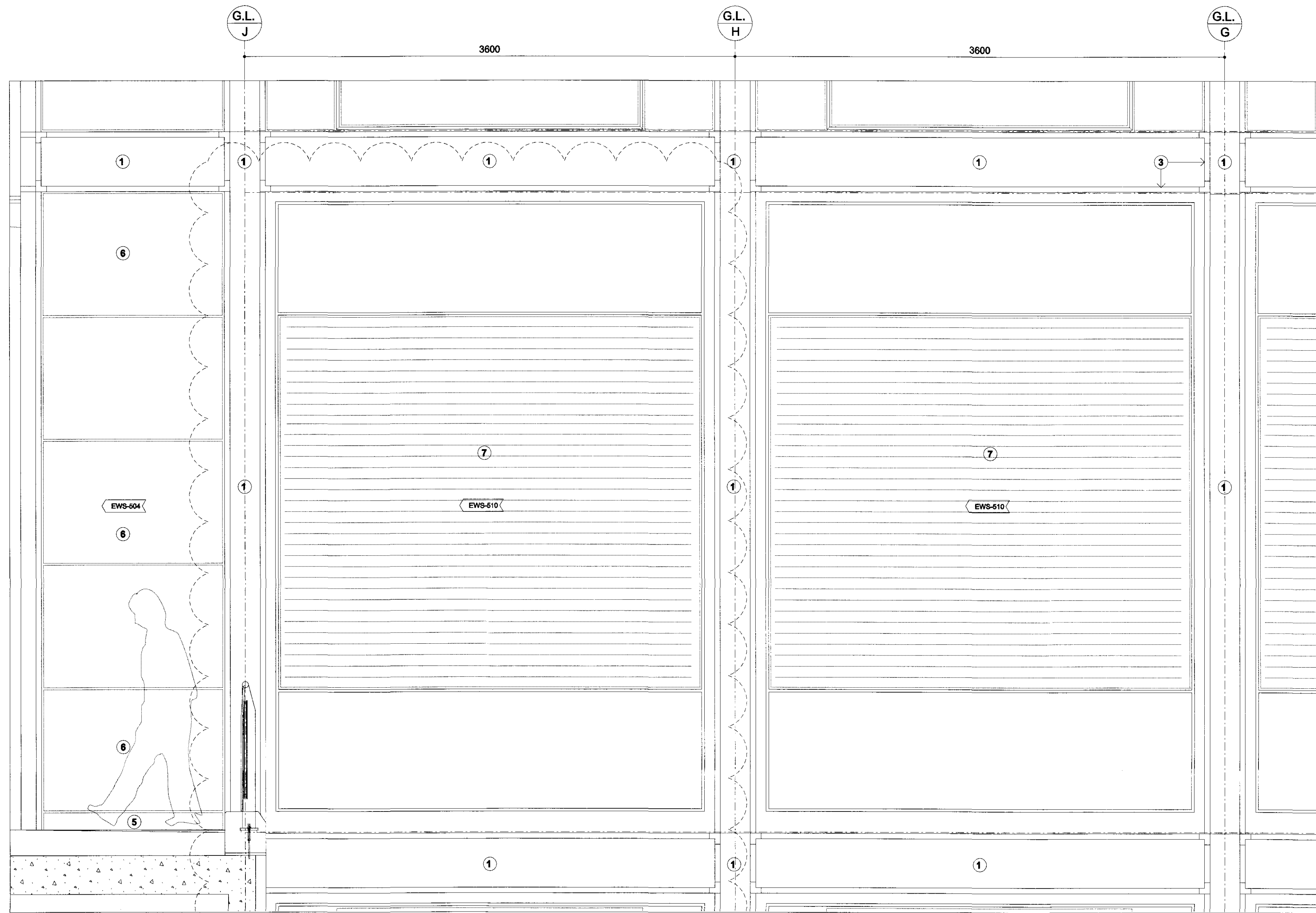


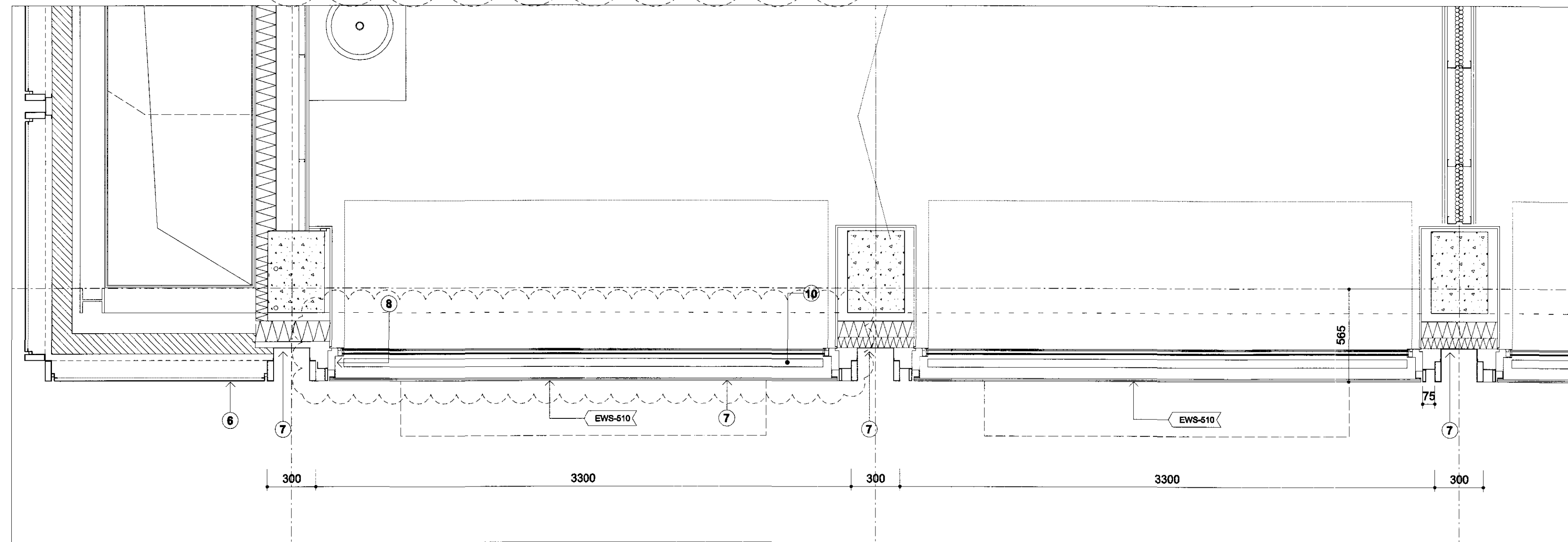
Cross Section





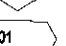



Detail 01. Scale 1:5



Elevation



Plan

- General Notes:**
- G1 For Site and Grid setting out refer to A/UCLH4A/3000
 - G2 All dimensions to be checked on site
 - G3 Any discrepancies between drawings to be reported to the Architect immediately.
 - G4 All Levels are above ordnance datum (AOD)
 - New Levels are shown thus: ± 20.345
 - Existing Levels are shown thus: $\text{EX} \pm 20.345$
 - Retained Existing Levels: $\text{EX} \pm 20.345$
 - G5 Use figured dimensions only. Do not scale from drawings. IF IN DOUBT, ASK.
 - G6 Refer to Structural Engineers drawings for all structural and services information.
 - G7 For tolerances see the Design Drawings and Specifications
 - G8 For elements of work subject to Contractor's Design, this drawing is indicative of the visual & performance requirements only. The Contractor is responsible for the detailed design and co-ordination of the installation within the parameters defined in the specification, design drawings, contract terms and contract documents.
 - G9 Room numbers are shown thus: 
 - G10 Door(D) & Window (W) References are shown thus: 
 - G11 Clear height is shown thus (finished floor to finished soffit) 
 - G12 T Sheet Reference shown thus 
 - G13 Finishes are shown thus: 
 - G14 Setting Out Points shown thus: 
 - G15 Refer to A/UCLH4A/9100 for T Sheet references, and to A/UCLH4A/9110 to 9167 for Architectural Specifications.

- Notes**
- 1 Bronze channel formed with bronze fins and panel.
 - 2 Not in use
 - 3 Bronze extrusion
 - 4 Possible junction between bronze panels (2) either shadow gap or expressed fin
 - 5 Precast concrete
 - 6 Bronze panel
 - 7 Clear single glazed outer leaf
 - 8 PFC aluminium inner face to window frame
 - 9 Suspended ceiling
 - 10 Interstitial automatic motorised aluminium ppc perforated louvres Raisable and tiltable connected to BMS for remote re-set. Pnly raisable for maintenance
 - 11 Composite insulated cladding system

EWS-510

| Work Package | Cost Check | Info/Briefing | Tender | Contract | Construction |
|--------------|------------|---------------|--------|----------|--------------|
| | | | | | |
| | | | | | |
| | | | | | |
| | | | | | |
| | | | | | |
| | | | | | |
| | | | | | |
| | | | | | |
| | | | | | |
| | | | | | |

| Date | Ref. | Revision |
|----------|------|---|
| 04.02.09 | A | Issued as Stage D final draft information under Memo 303. |
| 06.03.09 | B | Issued as Stage D final issue under Memo 0357. |
| 20.03.09 | C | Memo 381: UCLH Phase 3 Redevelopment for Cancer Services: Tender Issue. |
| 20.03.09 | D | In Progress facade package issued to ECH under Memo 0394 |
| 23.04.09 | E | Memo 0420: UCLH Phase 3 Redevelopment for Cancer Services: Tender Addendum |
| 05.05.09 | F | Memo 0420: UCLH Phase 3 Redevelopment for Cancer Services: Issued for ITT. |
| 11.09.09 | G | Memo 0700: UCLH Phase 3 Redevelopment for Cancer Services: Issued for PS2 Facade. |
| 26.01.10 | H | Memo 1267: General revisions to cladding |
| 05.03.10 | J | T1 External Envelope Package under Memo 1394 |

| Date | Ref. | Revision |
|----------|------|--|
| 08.03.10 | J | Issued for Discharge of Planning Conditions under Memo 1405. |

| | |
|------------|--|
| Project | UCLH4A - Phase 3 Cancer Centre |
| Subject | EWS-510 North facade windows at ground floor |
| Architects | Hopkins Architects Ltd 27 Broadley Terrace, London, NW1 8LG T: 020 7724 1751 E: ma@hopkins.co.uk |

| Sort Code | Drawing Number | Rev. |
|------------|----------------|------------------|
| A / UCLH4A | 5031 | J |
| Date | 04.02.09 | Scale 1:20 at A1 |